

**R** remove

Assist persons in Immediate Danger

**A** 000  
Fire, Police, Ambulance  
alarm

Alert occupants & raise an alarm. Ensure the Fire Brigade are notified - Dial 000

**C** contain

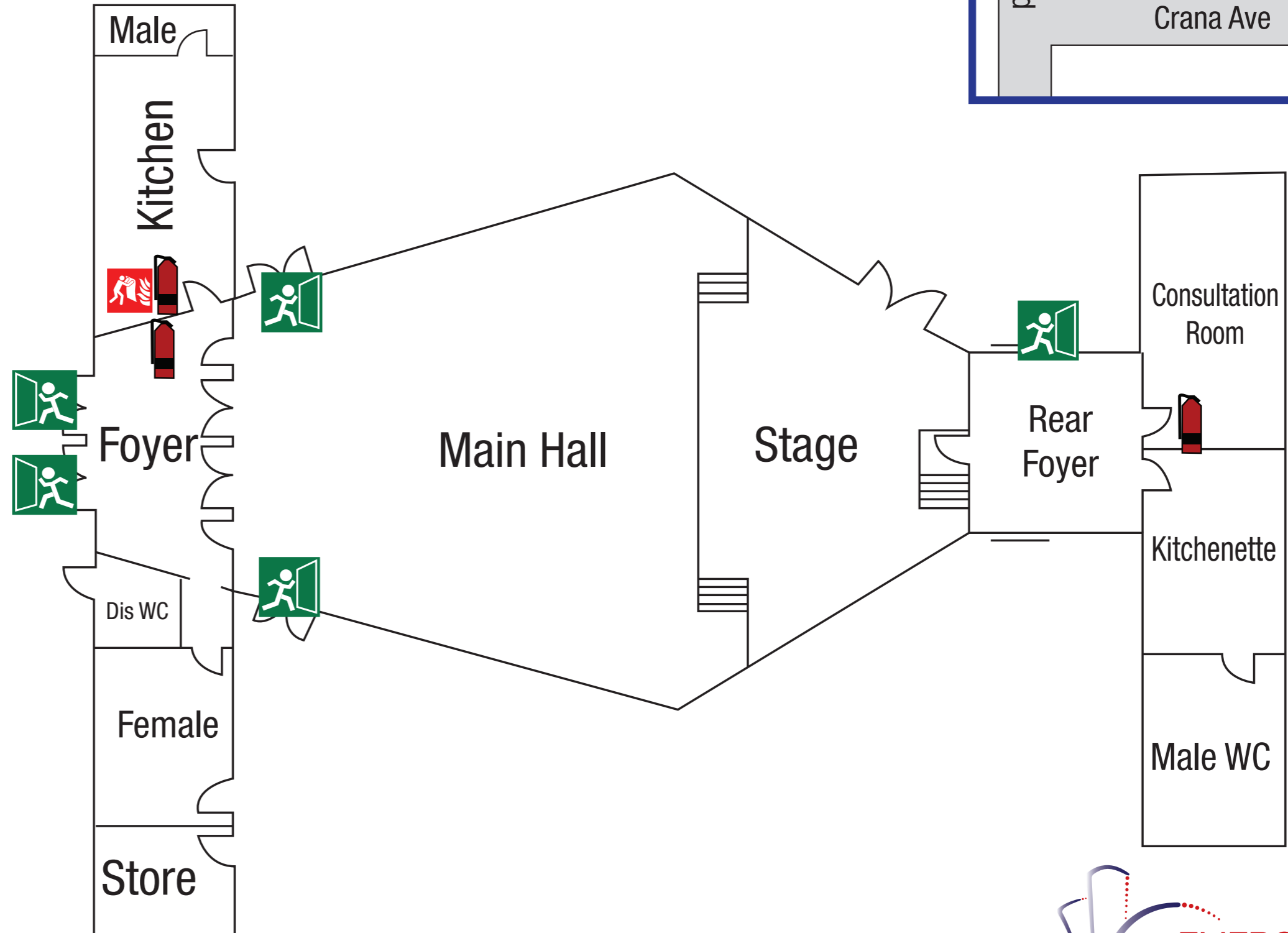
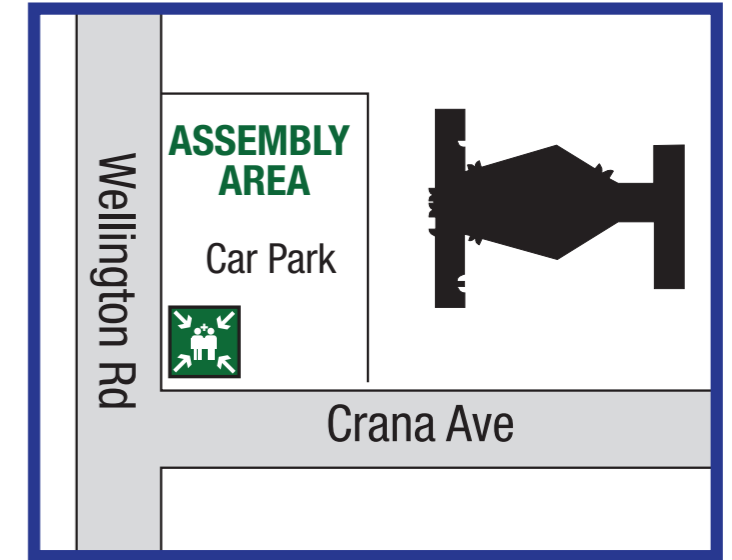
Contain the smoke and fire. Restrict the spread of fire. Attempt to extinguish the fire, if safe and trained to do so. Work in pairs.

**E** evacuate

Evacuate to a safe area. Evacuate the building via the nearest, safest exit route and wait for assistance from responding emergency services.

# EVACUATION DIAGRAM

East Lindfield Community Hall  
9 Wellington Road  
East Lindfield, 2070



**LEGEND**

- Exit
- CO2 Fire Extinguisher
- Fire Blanket

Valid to June 2026 - N.D.T.S

