

R remove

Assist persons in Immediate Danger

A 000
alarm
Fire, Police, Ambulance

Alert occupants & raise an alarm. Ensure the Fire Brigade are notified - Dial 000

C contain

Contain the smoke and fire. Restrict the speed of fire. Attempt to extinguish the fire, if safe and trained to do so.

Work in pairs.

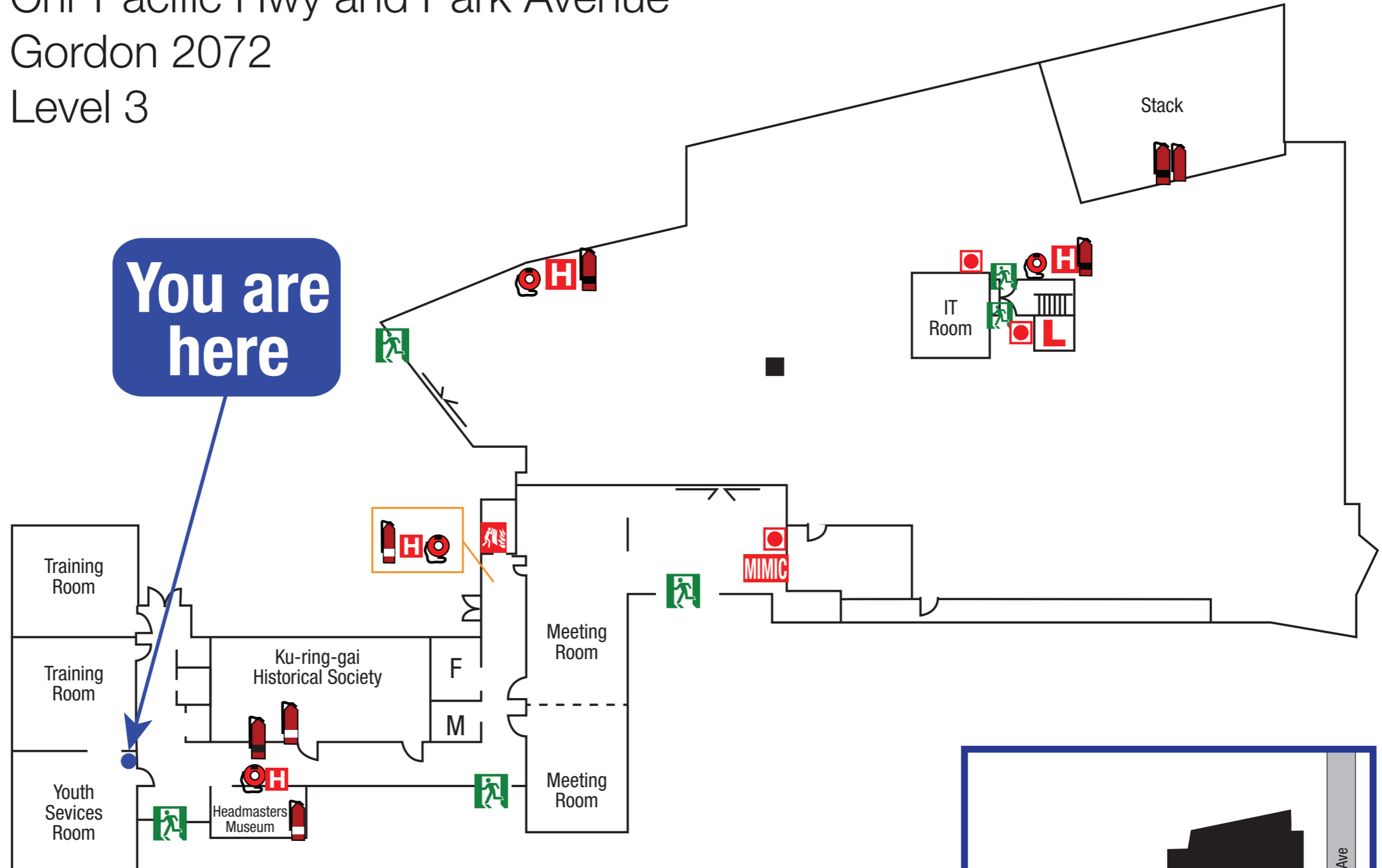
E evacuate

Evacuate to a safe area. Evacuate the building via the nearest, safest exit route and wait for assistance from responding emergency services.

EVACUATION DIAGRAM

Gordon Library
Cnr Pacific Hwy and Park Avenue
Gordon 2072
Level 3

You are here



If you hear the following alarm...

EVACUATION TONE Whoop Whoop
Action: All occupants & visitors to evacuate via nearest exit.
After Hours: Evacuate immediately

- LEGEND**
- Exit
 - Dry Chemical Extinguisher
 - CO2 Fire Extinguisher
 - Water Extinguisher
 - Fire Hose Reel
 - MIMIC Panel
 - Manual Call Point
 - Hydrant
 - Fire Blanket
 - Lift

**EMERGENCY
EVAC PROCEDURES**

Valid to June 2026 - N.D.T.S

