

R remove

Assist persons in Immediate Danger

A 000
Fire, Police, Ambulance
alarm

Alert occupants & raise an alarm. Ensure the Fire Brigade are notified - Dial 000

C contain

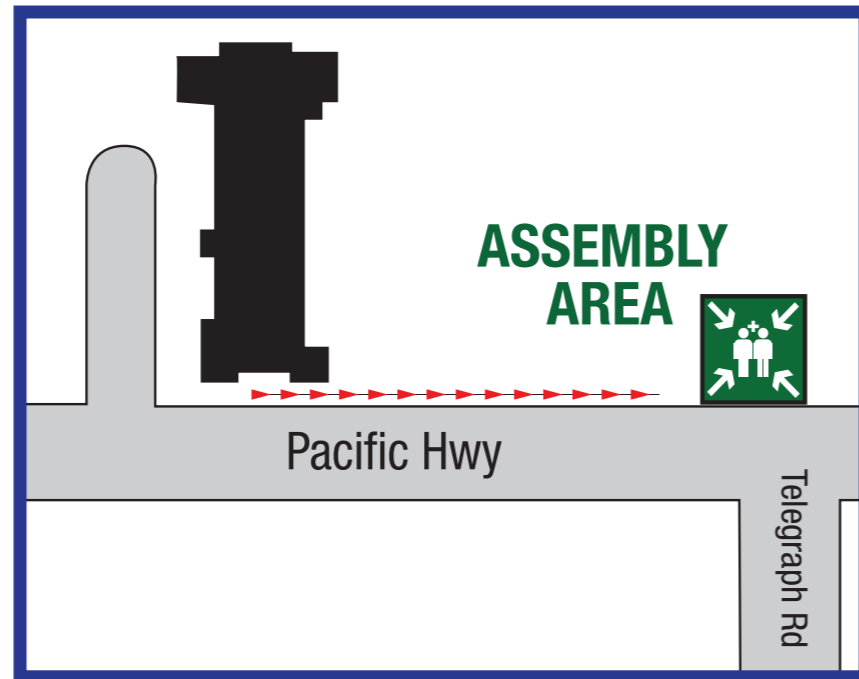
Contain the smoke and fire. Restrict the spread of fire. Attempt to extinguish the fire, if safe and trained to do so. Work in pairs.

E evacuate

Evacuate to a safe area. Evacuate the building via the nearest, safest exit route and wait for assistance from responding emergency services.

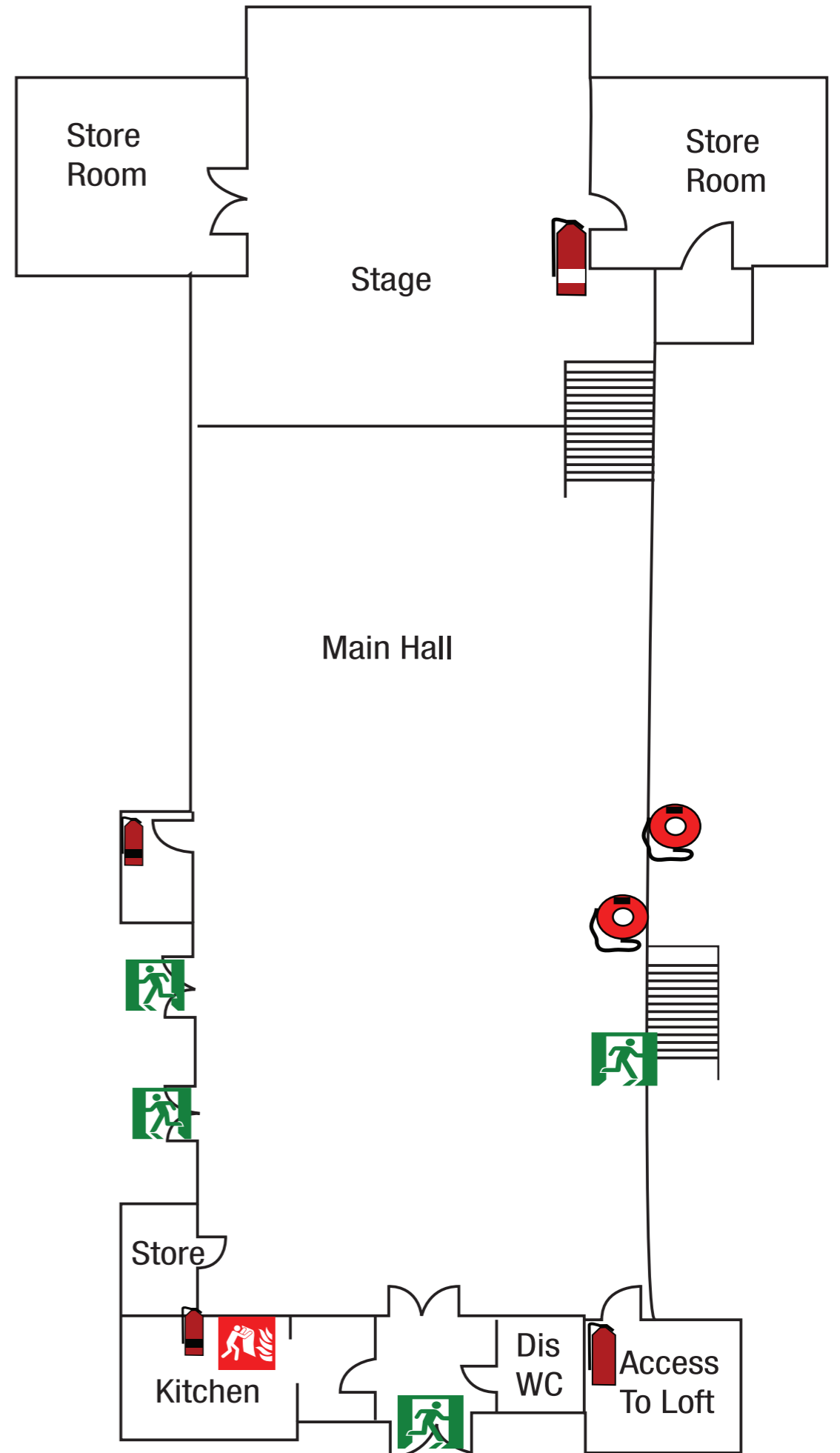
EVACUATION DIAGRAM

Ku-ring-gai Town Hall
1186 Pacific Hwy
Pymble, 2073
Upper Floor



**EMERGENCY
EVAC PROCEDURES**

Valid to June 2026 - N.D.T.S



LEGEND

- Exit
- Dry Chemical Extinguisher
- Fire Hose Reel
- Water Extinguisher
- CO2 Fire Extinguisher
- Fire Blanket
- Dry Chemical Extinguisher