

R remove

Assist persons in Immediate Danger

A 000
Fire, Police, Ambulance
alarm

Alert occupants & raise an alarm. Ensure the Fire Brigade are notified - Dial 000

C contain

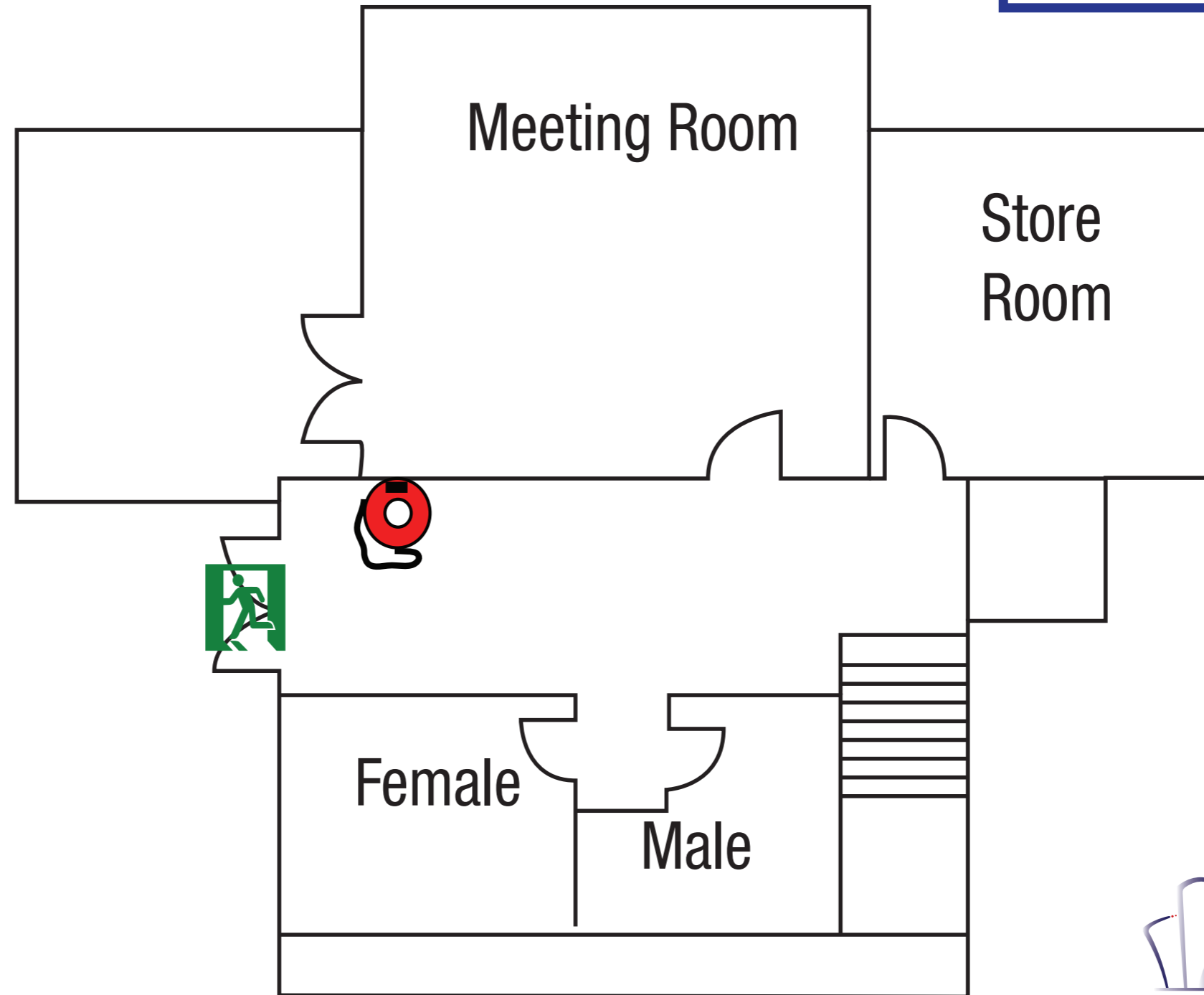
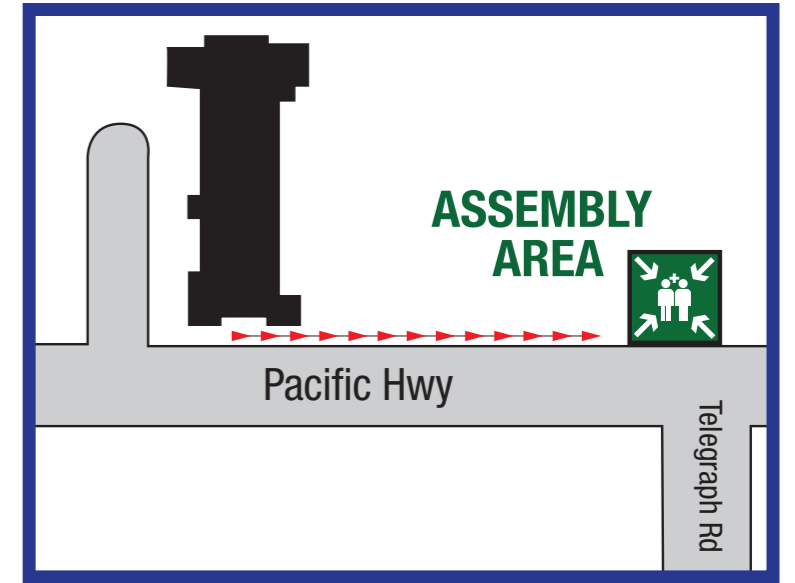
Contain the smoke and fire. Restrict the spread of fire. Attempt to extinguish the fire, if safe and trained to do so. Work in pairs.

E evacuate

Evacuate to a safe area. Evacuate the building via the nearest, safest exit route and wait for assistance from responding emergency services.

EVACUATION DIAGRAM

Ku-ring-gai Town Hall
1186 Pacific Hwy
Pymble, 2073
Lower Floor



- LEGEND**
- Exit
 - Dry Chemical Extinguisher
 - Fire Hose Reel
 - Water Extinguisher
 - CO2 Fire Extinguisher
 - Fire Blanket

Valid to June 2026 - N.D.T.S

