

**R** **remove**  
Assist persons in  
Immediate Danger

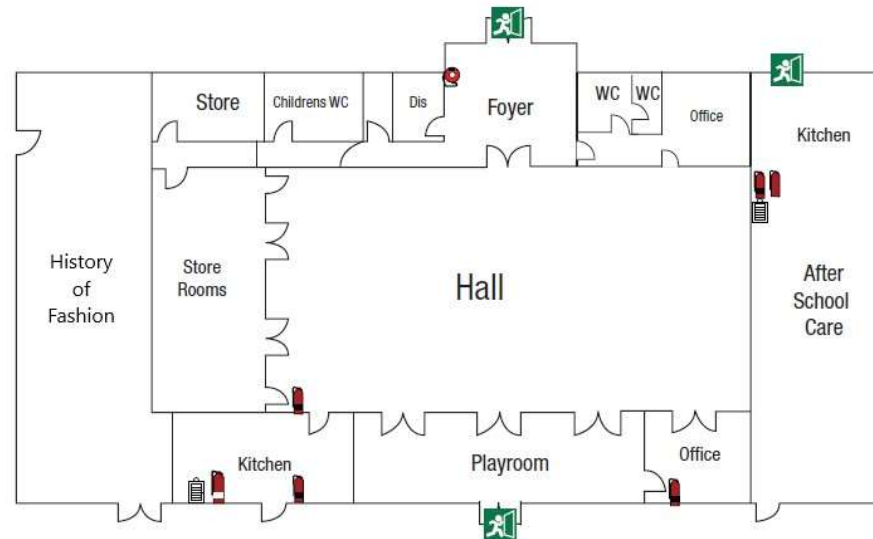
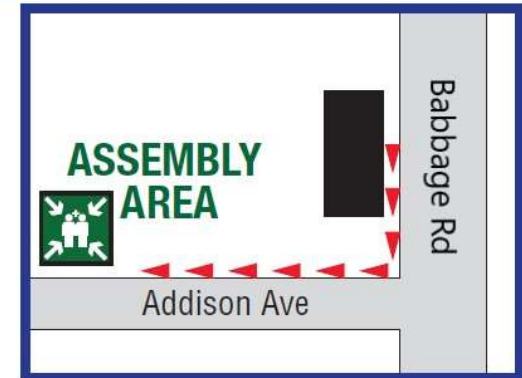
**A** **000**  
**alarm**  
Raise the Alarm  
Notify the Office and ensure that  
the emergency services have been  
contacted

**C** **contain**  
Restrict the Danger area/s

**E** **extinguish**  
If trained and if safe to do so

## EVACUATION DIAGRAM

East Roseville Community Hall  
Babbage Road  
East Roseville



Exp August 2027

**EMERGENCY  
EVAC PROCEDURES**