

R remove
Assist persons in Immediate Danger

A 000
Fire, Police, Ambulance
alarm

Alert occupants & raise an alarm. Ensure the Fire Brigade are notified - Dial 000

C contain
Contain the smoke and fire. Restrict the spread of fire. Attempt to extinguish the fire, if safe and trained to do so.
Work in pairs.

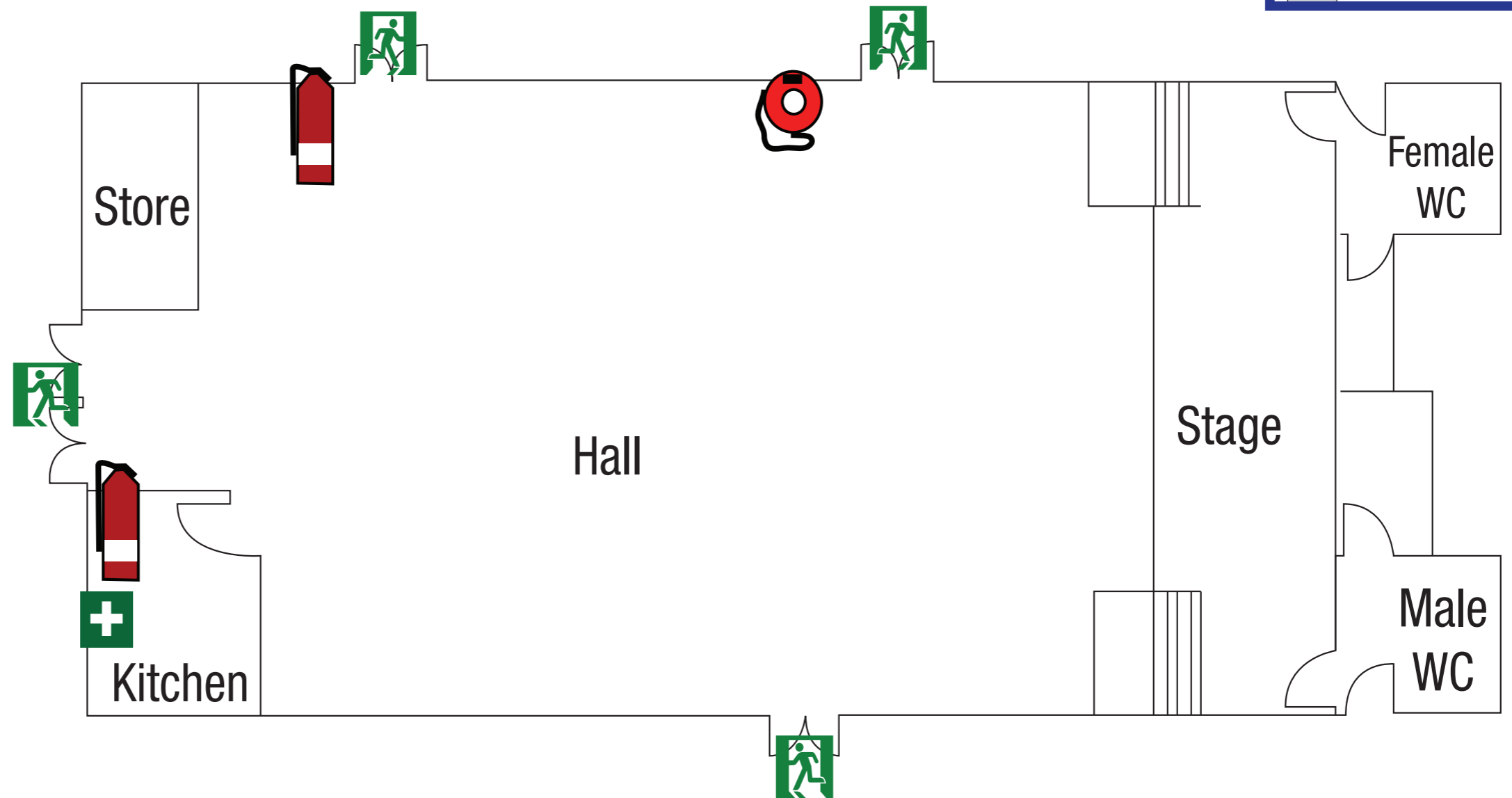
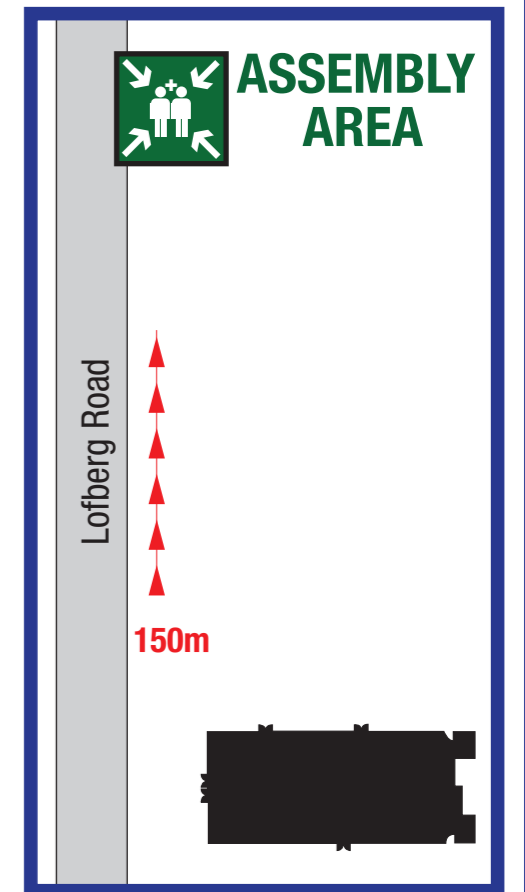
E evacuate
Evacuate to a safe area. Evacuate the building via the nearest, safest exit route and wait for assistance from responding emergency services.

EVACUATION DIAGRAM

West Pymble Hall

Lofberg Road

West Pymble, 2073



LEGEND

- Exit
- Lift
- Dry Chemical Extinguisher
- Fire Hose Reel
- First Aid