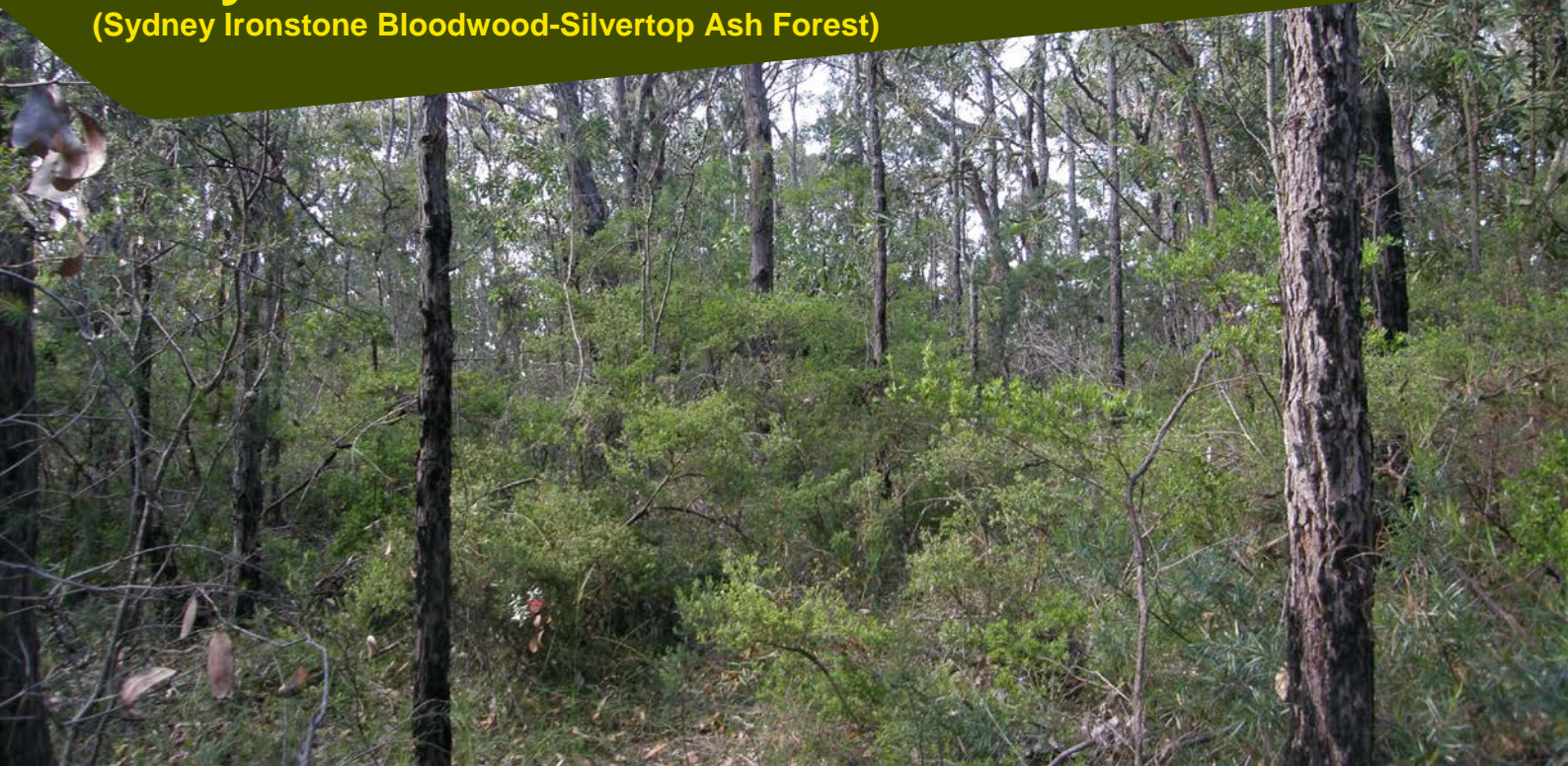


Endangered Ecological Communities in Ku-ring-gai

Duffys Forest

(Sydney Ironstone Bloodwood-Silvertop Ash Forest)



Description

Duffys Forest (DF) is an open shrubby forest or woodland forest dominated by Red Bloodwood (*Corymbia gummifera*), Silvertop Ash (*Eucalyptus seeberi*) and Stringybark (*Eucalyptus capitellata*) or White Stringybark (*Eucalyptus oblonga*) with Scribbly Gum (*Eucalyptus haemastoma*) less common. The diverse shrub layer includes *Hakea* and *Banksia* above a relatively grassy ground layer. This plant community is also known as Sydney Ironstone Bloodwood-Silvertop Ash Forest (*Native vegetation of the Sydney metropolitan Area, 2013*).

In Ku-ring-gai this forest type is found in areas of high rainfall (>1100mm) on sandstone soils, especially where red ironstone mantles occur.

Protection and Threats

Duffys Forest is listed as an Endangered Ecological Community and is protected under the *NSW Threatened Species Conservation Act 1995*. Threats include: clearing for development, nutrient enrichment, soil erosion, weed invasion, garden escapes, recreational damage and rubbish dumping. Inappropriate fire regimes pose a further threat.

Wildlife

This forest provides layers of habitat for a range of native wildlife.

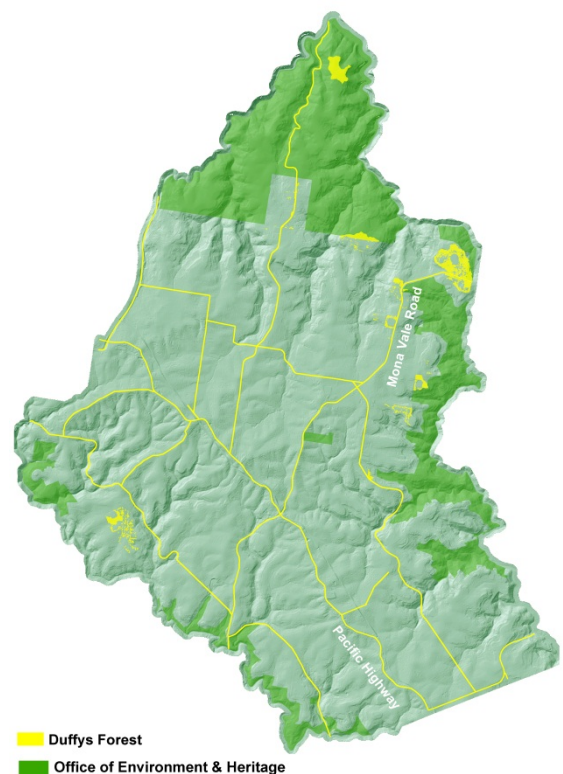
What can you do?

There's lots you can do to help preserve Duffy's Forest:

- Join a Bushcare group
- Keep your pets under control and report any fox sightings to us
- Never dump rubbish in bushland - penalties apply
- Remove weeds from your garden to stop them spreading
- [Install a raingarden](#) to manage stormwater
- If you live near this forest community you can plant some of the forest's native species in your garden to help attract birds, mammals and butterflies (see list over)

For further information

- Visit the NSW [Office of Environment & Heritage](#) website



Only 15% of Sydney's original Duffys Forest ecological community now remains.

Species List

Canopy trees		Shrubs		Ground layer - graminoids		Ground layer - ferns & herbs		Climbers	
Botanical Name	Common Name	Botanical Name	Common Name	Botanical Name	Common Name	Botanical Name	Common Name	Botanical Name	Common Name
<i>Angophora costata</i>	Sydney Red Gum	<i>Acacia linifolia</i>	White Wattle	<i>Aristida vagans</i>	Threeawn Speargrass	<i>Actinotus minor</i>	Lesser Flannel Flower	<i>Billardiera scandens</i>	Hairy Apple Berry
<i>Corymbia gummifera</i>	Red Bloodwood	<i>Acacia longifolia</i>	Sydney Golden Wattle	<i>Austrodanthonia racemosa</i>	Slender Wallaby Grass	<i>Centella asiatica</i>	Indian Pennywort	<i>Cassytha species</i>	Devil's Twine
<i>Eucalyptus capitellata</i>	Brown Stringybark	<i>Acacia myrtifolia</i>	Myrtle Wattle	<i>Austrodanthonia tenuior</i>	East Coast Wallaby Grass	<i>Dampiera stricta</i>	Blue Dampiera	<i>Glycine clandestina</i>	Twining Glycine
<i>Eucalyptus globoidea</i>	White Stringybark	<i>Acacia suaveolens</i>	Sweet Wattle	<i>Austrostipa pubescens</i>		<i>Dianella caerulea</i>	Tufted Lily	<i>Hardenbergia violacea</i>	Purple Coral Pea; False Sarsaparilla
<i>Eucalyptus haemastoma</i>	Scribbly Gum	<i>Banksia spinulosa</i>	Hairpin Banksia	<i>Caustis flexuosa</i>	Curly Wig	<i>Dichondra repens</i>	Kidney Weed	<i>Kennedia rubicunda</i>	Dusky Coral Pea
<i>Eucalyptus oblonga</i>	White Stringybark	<i>Bossiaea obcordata</i>	Spiny Bossiaea	<i>Chionochloa pallida</i>	Silvertop Wallaby Grass	<i>Dipodium variegatum</i>	Blotched Hyacinth Orchid	<i>Smilax glycyphylla</i>	Sweet Sarsaparilla
<i>Eucalyptus sieberi</i>	Silvertop Ash	<i>Dodonaea triquetra</i>	Large Leaf Hop Bush	<i>Cyathochaeta diandra</i>	Sheath Rush	<i>Lindsaea linearis</i>	Screw Fern		
<i>Eucalyptus sparsifolia</i>	Narrow-Leaved Stringybark	<i>Epacris pulchella</i>	Wallum Heath	<i>Entolasia stricta</i>	Wiry Panic Grass	<i>Lindsaea microphylla</i>	Lacy Wedge Fern		
<i>Eucalyptus umbra</i>	Broad-Leaved White Mahogany	<i>Grevillea linearifolia</i>	Linear-Leaf Grevillea	<i>Lomandra glauca</i>	Pale Mat Rush	<i>Pteridium esculentum</i>	Common Bracken		
Smaller trees		<i>Hakea dactyloides</i>	Finger Hakea	<i>Lomandra longifolia</i>	Spiny-Headed Mat Rush	<i>Tetratheca ericifolia</i>	Pink Eye		
<i>Allocasuarina littoralis</i>	Black She-Oak	<i>Hakea sericea</i>	Needlebush	<i>Lomandra multiflora</i>	Many-Flowered Mat Rush				
<i>Banksia ericifolia</i>	Heath-Leaved Banksia	<i>Hibbertia aspera</i>	Rough Guinea Flower	<i>Lomandra obliqua</i>	Twisted Mat Rush				
<i>Banksia serrata</i>	Old-Man Banksia	<i>Lambertia formosa</i>	Mountain Devil	<i>Microlaena stipoides</i>	Weeping Grass				
<i>Ceratopetalum gummiferum</i>	Christmas Bush	<i>Leptospermum polygalifolium</i>	Tantoon	<i>Themeda australis</i>	Kangaroo Grass				
<i>Elaeocarpus reticulatus</i>	Blueberry Ash	<i>Lomatia silaifolia</i>	Crinkle Bush	<i>Xanthorrhoea media</i>	Grass Tree				
<i>Exocarpos cupressiformis</i>	Cherry Ballart; Native Cherry	<i>Micrantheum ericoides</i>							
<i>Leptospermum trinervium</i>	Paperbark Teatree	<i>Ozothamnus diosmifolius</i>	Rice Flower; Sago Bush						
<i>Persoonia levis</i>	Broad-Leaved Geebung	<i>Persoonia levis</i>	Broad-Leaved Geebung						
<i>Pittosporum undulatum</i>	Mock Orange	<i>Persoonia pinifolia</i>	Pine-Leaved Geebung						
		<i>Petrophile pulchella</i>	Conesticks						
		<i>Phyllanthus hirtellus</i>	Thyme Spurge						
		<i>Pultenaea tuberculata</i>	Wreath Bush-Pea						