



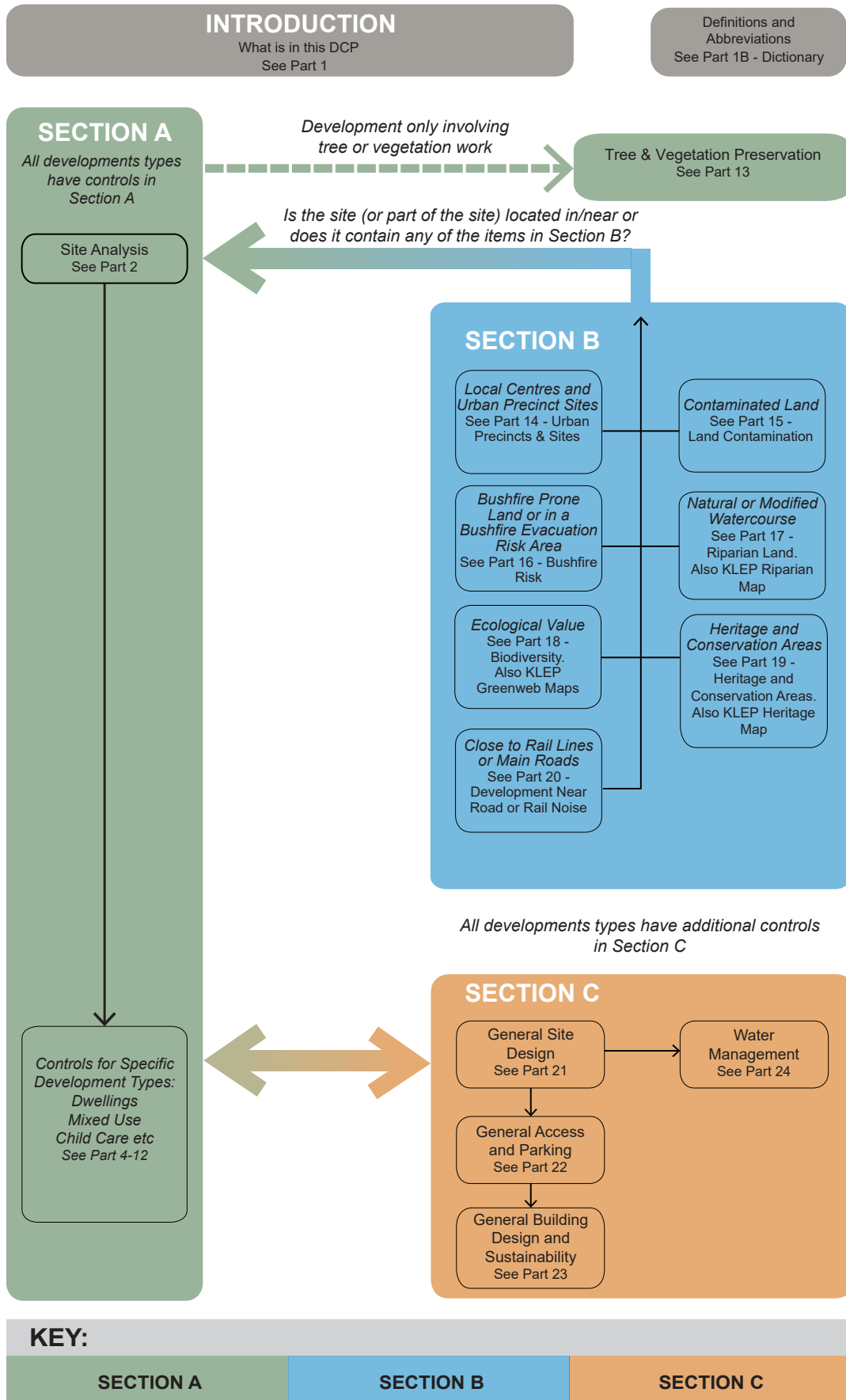
# **Ku-ring-gai Development Control Plan**

**ADOPTED - 14 February 2023**  
**EFFECTIVE - 03 March 2023**



# CONTENTS

## HOW TO USE THE DCP



# CONTENTS

## PART 1

### INTRODUCTION

	Introduction - How to use this DCP.....	p1-2
<b>1A</b>	<b>Preliminary.....</b>	<b>p1-11</b>
1A.1	Purpose of this DCP .....	p1-12
1A.2	Name of this DCP .....	p1-12
1A.3	Commencement Date.....	p1-12
1A.4	Land affected by this DCP.....	p1-12
1A.5	General aims of the DCP.....	p1-12
1A.6	Relationship to Ku-ring-gai Local Environmental Plan.....	p1-13
1A.7	Relationship to SEPP 65 and NSW Residential Flat Design Code.....	p1-14
1A.8	Relationships to other DCPs.....	p1-14
1A.9	Schedule of Amendments.....	p1-14
<b>1B</b>	<b>Dictionary.....</b>	<b>p1-15</b>
1B.1	Definitions.....	p1-16
1B.2	Abbreviations.....	p1-36

## SECTION A

### PART 2

#### SITE ANALYSIS

	Introduction.....	p2-2
2.1	Site Analysis .....	p2-3

### PART 3

#### LAND CONSOLIDATION AND SUBDIVISION

	Introduction.....	p3-2
<b>3A</b>	<b>General Controls for Consolidation and Subdivision .....</b>	<b>p3-3</b>
3A.1	Lot Shape, Orientation and Design .....	p3-4
3A.2	Minimum Lot Depth for Bushfire Prone Land.....	p3-5
3A.3	Building Footprint.....	p3-9
3A.4	Trees and Vegetation.....	p3-10
3A.5	Access.....	p3-11
3A.6	Infrastructure.....	p3-14
<b>3B</b>	<b>Land Consolidation.....</b>	<b>p3-17</b>
<b>3C</b>	<b>Strata and Community Title Subdivision .....</b>	<b>p3-21</b>
<b>3R</b>	<b>References .....</b>	<b>p3-23</b>
3R.1	Minimum Lot Depth Maps.....	p3-24

# CONTENTS

## PART 4

### 4A

4A.1

4A.2

4A.3

4A.4

### 4B

4B.1

4B.2

4B.3

### 4C

4C.1

4C.2

4C.3

4C.4

4C.5

4C.6

4C.7

4C.8

4C.9

4C.10

## DWELLING HOUSES

Introduction.....	p4-2
<b>Site Design .....</b>	<b>p4-3</b>
Local Character and Streetscape .....	p4-4
Building Setbacks .....	p4-6
Built-Upon Area .....	p4-12
Landscaping .....	p4-14
<b>Access and Parking .....</b>	<b>p4-15</b>
Vehicle Access .....	p4-16
Car Parking Provision .....	p4-17
Carpools and Garages .....	p4-18
<b>Building Design and Sustainability .....</b>	<b>p4-21</b>
Building Envelopes .....	p4-22
Building Facades .....	p4-24
First Floor Design and Roof Forms .....	p4-26
Private Open Space .....	p4-28
Solar Access .....	p4-29
Natural Ventilation .....	p4-30
Ancillary Facilities .....	p4-31
Fencing .....	p4-35
Waste Management.....	p4-37
Materials and Finishes.....	p4-38

## PART 5

### 5A

5A.1

5A.2

5A.3

### 5B

5B.1

5B.2

### 5C

5C.1

5C.2

5C.3

5C.4

5C.5

5C.6

5C.7

5C.8

## SECONDARY DWELLINGS

Introduction.....	p5-2
<b>Site Design .....</b>	<b>p5-3</b>
General .....	p5-4
Site Layout .....	p5-5
Building Setbacks and Separation .....	p5-7
<b>Access and Parking .....</b>	<b>p5-11</b>
Access .....	p5-12
Car Parking Provision .....	p5-14
<b>Building Design and Sustainability .....</b>	<b>p5-15</b>
Solar Access .....	p5-16
Private Open Space .....	p5-17
Building Envelopes .....	p5-18
Building and Room Sizes .....	p5-19
Building Appearance .....	p5-20
Building Services .....	p5-21
Visual and Acoustic Privacy .....	p5-22
Storage and Utility Areas .....	p5-23

**PART 6****MULTI-DWELLING HOUSING**

	Introduction.....	p6-2
<b>6A</b>	<b>Site Design .....</b>	<b>p6-5</b>
6A.1	Local Character and Streetscape.....	p6-6
6A.2	Site Layout .....	p6-8
6A.3	Building Setback .....	p6-11
6A.4	Building Separation .....	p6-13
6A.5	Site Coverage .....	p6-14
6A.6	Deep Soil Landscaping .....	p6-15
<b>6B</b>	<b>Access and Parking .....</b>	<b>p6-17</b>
6B.1	Vehicle Access .....	p6-18
6B.2	Car Parking Provision .....	p6-19
6B.3	Bicycle Parking Provision .....	p6-22
<b>6C</b>	<b>Building Design and Sustainability .....</b>	<b>p6-23</b>
6C.1	Communal Open Space .....	p6-24
6C.2	Private Open Space .....	p6-26
6C.3	Solar Access .....	p6-28
6C.4	Natural Ventilation .....	p6-29
6C.5	Dwelling Mix and Accessibility .....	p6-30
6C.6	Dwelling Placement and Room Design.....	p6-31
6C.7	Building Entries and Internal Pathways .....	p6-34
6C.8	Building Facades and Articulation .....	p6-35
6C.9	Building Storeys.....	p6-37
6C.10	Top Storey Design and Roof Forms .....	p6-38
6C.11	Internal Ceiling Heights .....	p6-39
6C.12	Visual Privacy .....	p6-40
6C.13	Storage .....	p6-41
6C.14	External Clothes Drying Facilities .....	p6-42
6C.15	Fencing .....	p6-43
<b>6R</b>	<b>References.....</b>	<b>p6-45</b>
6R.1	Design Quality principles .....	p6-46

**PART 7****RESIDENTIAL FLAT BUILDINGS**

	Introduction.....	p7-2
<b>7A</b>	<b>Site Design .....</b>	<b>p7-5</b>
7A.1	Local Character and Streetscape.....	p7-6
7A.2	Site Layout.....	p7-8
7A.3	Building Setbacks .....	p7-10
7A.4	Building Separation .....	p7-14
7A.5	Site Coverage .....	p7-15
7A.6	Deep Soil Landscaping .....	p7-16
<b>7B</b>	<b>Access and Parking .....</b>	<b>p7-19</b>
7B.1	Car Parking Provision .....	p7-20
7B.2	Bicycle Parking Provision .....	p7-22

# CONTENTS

<b>7C</b>	<b>Building Design and Sustainability .....</b>	<b>p7-23</b>
7C.1	SEPP 65 and Apartment Design Guide Requirements .....	p7-24
7C.2	Communal Open Space .....	p7-25
7C.3	Ground Floor Apartments .....	p7-27
7C.4	Apartment Mix.....	p7-29
7C.5	Building Entries .....	p7-30
7C.6	Building Form and Facades .....	p7-32
7C.7	Building Storeys .....	p7-36
7C.8	Top Storey Design and Roof Forms .....	p7-37
7C.9	Laundry and Air Clothes Drying Facilities .....	p7-38
7C.10	Fencing .....	p7-39
7C.11	Acoustic Privacy .....	p7-40

## PART 8

<b>8A</b>	<b>Site Design .....</b>	<b>p8-5</b>
8A.1	Local Character and Streetscape .....	p8-6
8A.2	Site Layout .....	p8-8
8A.3	Building Setback .....	p8-10
8A.4	Building Separation .....	p8-11
8A.5	Wind Impact .....	p8-13
8A.6	Site Coverage.....	p8-14
8A.7	Deep Soil Landscaping.....	p8-15
<b>8B</b>	<b>Access and Parking .....</b>	<b>p8-17</b>
8B.1	Vehicle and Service Access and Loading Facilities .....	p8-18
8B.2	Car Parking Provision .....	p8-21
8B.3	Bicycle Parking and Support Facilities Provision .....	p8-24
<b>8C</b>	<b>Building Design.....</b>	<b>p8-25</b>
8C.1	Solar Access and Daylight .....	p8-26
8C.2	Natural Ventilation .....	p8-28
8C.3	Room Sizes.....	p8-29
8C.4	Apartment Mix and Accessibility .....	p8-31
8C.5	Building Entries .....	p8-32
8C.6	Internal Common Circulation .....	p8-34
8C.7	Roof Forms and Podiums .....	p8-35
8C.8	Communal Open Space .....	p8-37
8C.9	Building Facades and Articulation.....	p8-39
8C.10	Ground Floor Commercial Uses .....	p8-43
8C.11	Awnings .....	p8-45
8C.12	Colonnades .....	p8-46
8C.13	Internal Ceiling Heights .....	p8-47
8C.14	Visual Privacy .....	p8-48
8C.15	Acoustic Privacy .....	p8-49
8C.16	Late Night Trading .....	p8-52
8C.17	External Clothes Drying Facilities .....	p8-53

**PART 9****9A**

- 9A.1
- 9A.2
- 9A.3

**9B**

- 9B.1
- 9B.2
- 9B.3

**9C**

- 9C.1
- 9C.2
- 9C.3
- 9C.4
- 9C.5
- 9C.6
- 9C.7
- 9C.8
- 9C.9
- 9C.10
- 9C.11
- 9C.12
- 9C.13
- 9C.14
- 9C.15

**PART 10****10A**

- 10A.1
- 10A.2
- 10A.3

**10B**

- 10B.1
- 10B.2

**10C**

- 10C.1
- 10C.2
- 10C.3
- 10C.4
- 10C.5
- 10C.6

**NONRESIDENTIAL AND OFFICE BUILDINGS**

Introduction .....	p9-2
<b>Site Design .....</b>	<b>p9-3</b>
Building Setbacks .....	p9-4
Building Separation .....	p9-5
Deep Soil Landscaping .....	p9-6
<b>Access and Parking .....</b>	<b>p9-7</b>
Service Access and Loading Facilities .....	p9-8
Car Parking Provision .....	p9-10
Bicycle Parking Provision .....	p9-14
<b>Building Design .....</b>	<b>p9-15</b>
Solar Access .....	p9-16
Natural Ventilation .....	p9-17
Floor Depth .....	p9-18
Building Entries .....	p9-19
Internal Common Circulation .....	p9-21
Roof Forms, Terraces and Podiums .....	p9-22
Communal Open Space .....	p9-23
Building Forms and Facades .....	p9-25
Corner Building Articulation .....	p9-26
Ground Floor Frontage .....	p9-27
Awnings and Colonnades .....	p9-29
Internal Ceiling Heights .....	p9-30
Visual Privacy .....	p9-31
Acoustic Privacy .....	p9-32
Fencing .....	p9-33

**CHILD CARE CENTRE**

Introduction .....	p10-2
<b>Site Design.....</b>	<b>p10-5</b>
Location.....	p10-6
Site Planning.....	p10-9
Landscaping.....	p10-11
<b>Access and Parking.....</b>	<b>p10-15</b>
Vehicle Access and Parking.....	p10-16
Accessibility.....	p10-17
<b>Building Design and Sustainability.....</b>	<b>p10-19</b>
Solar Access and Ventilation.....	p10-20
Noise.....	p10-21
Indoor Play Spaces.....	p10-22
Back-Up Facilities.....	p10-24
Staff and Parent Accessible Areas.....	p10-26
Outdoor Play Spaces.....	p10-29

# CONTENTS

10C.7	Transition Areas.....	p10-33
10C.8	Dual-Use and Multi-Use Facilities.....	p10-34

## PART 11

### SEX INDUSTRY PREMISES

	Introduction .....	p11-2
11.1	Submitting a Development Application.....	p11-3
11.2	Initial Limits on Development Consent .....	p11-4
11.3	Sex Services Premises.....	p11-5
11.4	Home Occupation (Sex Services) Premises .....	p11-10

## PART 12

### SIGNAGE AND ADVERTISING

	Introduction .....	p12-2
12.1	Signage General.....	p12-3
12.2	Identification Signs - Building .....	p12-4
12.3	Identification Signs - Business.....	p12-5
12.4	Advertising Structures .....	p12-7
12.5	Advertising on Heritage Items or in Heritage Conservation Areas.....	p12-8
12.6	Advertising on Outdoor Dining Furniture or Footpath Trading Activities .....	p12-9
12.7	Illumination of Signs.....	p12-10
12.8	Special Signs.....	p12-11
12.9	Temporary Signs.....	p12-12
12.10	Maintenance.....	p12-14

## PART 13

### TREE AND VEGETATION PRESERVATION

	Introduction .....	p13-2
13.1	Tree and Vegetation Works.....	p13-4
13.2	Exemptions for tree and other Vegetation Works.....	p13-6
13.3	Heritage Items or Heritage Conservation Areas.....	p13-9
13.4	Application for Tree and other Vegetation Works.....	p13-11

## SECTION B

## PART 14

### URBAN PRECINCTS AND SITES

	Introduction.....	p14-4
<b>14A</b>	<b>St Ives Local Centre.....</b>	<b>p14-9</b>
14A.1	St Ives Local Centre Context.....	p14-10
14A.2	Public Domain and Pedestrian Access.....	p14-11
14A.3	Proposed Community Infrastructure.....	p14-12
14A.4	Setbacks.....	p14-14
14A.5	Built Form.....	p14-15
14A.6	Building Entries, Car Parking and Service Access.....	p14-16



14A.7	Precinct S1: St Ives Shopping Village.....	p14-17
14A.8	Precinct S2: Stanley Street Shops.....	p14-22
14A.9	Precinct S3: Buildings in R4 zones.....	p14-28
<b>14B</b>	<b>Turrumurra Local Centre.....</b>	<b>p14-31</b>
14B.1	Turrumurra Local Centre Context.....	p14-32
14B.2	Public Domain and Pedestrian Access.....	p14-33
14B.3	Proposed Community Infrastructure.....	p14-34
14B.4	Setbacks.....	p14-36
14B.5	Built Form.....	p14-37
14B.6	Building Entries, Car Parking and Service Access.....	p14-38
14B.7	Environmental Protection and Bush Fire Protection.....	p14-39
14B.8	Precinct T1: Pacific Highway and Ray Street Retail area.....	p14-40
14B.9	Precinct T2: Rohini Street and Eastern Road Retail Area.....	p14-51
14B.10	Precinct T3: Kissing Point Road Retail Area.....	p14-57
14B.11	Precinct T4: Hillview Area.....	p14-65
<b>14C</b>	<b>Pymble Local Centre .....</b>	<b>p14-69</b>
14C.1	Pymble Local Centre Context.....	p14-70
14C.2	Public Domain and Pedestrian Access.....	p14-71
14C.3	Proposed Community Infrastructure.....	p14-72
14C.4	Setbacks.....	p14-74
14C.5	Built Form.....	p14-75
14C.6	Building Entries, Car Parking and Service Access.....	p14-76
14C.7	Precinct 1: Grandview Street and Pacific Highway Commercial Area.....	p14-77
<b>14D</b>	<b>Gordon Local Centre.....</b>	<b>p14-83</b>
14D.1	Gordon Local Centre Context .....	p14-84
14D.2	Public Domain and Pedestrian Access.....	p14-85
14D.3	Proposed Community Infrastructure.....	p14-86
14D.4	Setbacks.....	p14-88
14D.5	Built Form.....	p14-90
14D.6	Building Entries, Car Parking and Service Access.....	p14-91
14D.7	Precinct G1: St Johns Avenue and Henry Street.....	p14-92
14D.8	Precinct G2: Pacific Highway Retail.....	p14-98
14D.9	Precinct G3: Civic Hub.....	p14-104
14D.10	Precinct G4: Mixed Use.....	p14-110
14D.11	Precinct G5: Buildings in R4 Zones.....	p14-116
<b>14E</b>	<b>Lindfield Local Centre.....</b>	<b>p14-119</b>
14E.1	Lindfield Local Centre Context .....	p14-120
14E.2	Public Domain and Pedestrian Access.....	p14-121
14E.3	Proposed Community Infrastructure.....	p14-122
14E.4	Setbacks.....	p14-125
14E.5	Built Form.....	p14-127
14E.6	Building Entries, Car Parking and Service Access.....	p14-128
14E.7	Precinct L1: Balfour Street Retail Area.....	p14-129

# CONTENTS

14E.8	Precinct L2: Pacific Highway Retail Area.....	p14-136
14E.9	Precinct L3: Tryon Place Mixed Use Area .....	p14-142
14E.10	Precinct L4: Tryon Road and Lindfield Avenue Retail Area....	p14-148
14E.11	Precinct L5: Lindfield Community Hub.....	p14-161
14E.12	Precinct L6: Former Library Precinct .....	p14-174
14E.13	Precinct L7: Buildings in R4 Zones.....	p14-183
14E.14	Precinct L8: Buildings in R4 Zones.....	p14-185
<b>14F</b>	<b>Roseville Local Centre .....</b>	<b>p14-189</b>
14F.1	Roseville Local Centre Context.....	p14-190
14F.2	Public Domain and Pedestrian Access.....	p14-191
14F.3	Proposed Community Infrastructure.....	p14-192
14F.4	Setbacks.....	p14-194
14F.5	Built Form.....	p14-195
14F.6	Building Entries, Car Parking and Service Access.....	p14-196
14F.7	Precinct R1: Hill Street Shops.....	p14-197
14F.8	Precinct R2: Pacific Highway Shops.....	p14-203
14F.9	Precinct R3: Pacific highway to Roseville Station.....	p14-208
<b>14G</b>	<b>Pymble Business Park.....</b>	<b>p14-213</b>
14G.1	Urban Precinct .....	p14-214
14G.2	Public Domain and Pedestrian Access .....	p14-216
14G.3	Proposed Community Infrastructure .....	p14-218
14G.4	Building Setbacks .....	p14-220
14G.5	Built Form .....	p14-222
14G.6	Heritage.....	p14-224
<b>14H</b>	<b>Screen Australia Site.....</b>	<b>p14-227</b>
14H.1	Urban Precincts .....	p14-228
14H.2	Public Domain and Pedestrian Access .....	p14-230
14H.3	Building Setbacks .....	p14-232
<b>14I</b>	<b>Killara Golf Club.....</b>	<b>p14-235</b>
14I.1	Urban Precinct .....	p14-236
14I.2	Pedestrian and Vehicular Access .....	p14-239
14I.3	Building Setbacks .....	p14-242
14I.4	Built Form .....	p14-244
14I.5	Heritage .....	p14-246
<b>14J</b>	<b>Holford Crescent Gordon.....</b>	<b>p14-249</b>
14J.1	Building Setbacks .....	p14-250
<b>14K</b>	<b>45-47 Tennyson Avenue and 105 Eastern Road, Turramurra</b>	<b>p14-253</b>
14K.1	Urban Precinct .....	p14-254
14K.2	Pedestrian and Vehicular Access.....	p14-256
14K.3	Building Setbacks .....	p14-258
14K.4	Built Form .....	p14-260
14K.5	Public Domain .....	p14-262
<b>14L</b>	<b>Part 62 and 64-66 Pacific Highway Roseville .....</b>	<b>p14-265</b>
14L.1	Urban Precinct .....	p14-266

14L.2	Pedestrian and Vehicular Access.....	p14-268
14L.3	Building Setbacks .....	p14-270
14L.4	Built Form .....	p14-272
14L.5	Heritage .....	p14-274
14L.6	Public Domain .....	p14-276
<b>14M</b>	<b>47 Warrane Road, Roseville Chase .....</b>	<b>p14-279</b>
14M.1	Urban Precinct .....	p14-280
14M.2	Public Domain, Pedestrian and Vehicular Access .....	p14-282
14M.3	Building Setbacks .....	p14-284
<b>14N</b>	<b>8a, 14, 16 Buckingham Road .....</b>	<b>p14-287</b>
14N.1	Urban Precinct .....	p14-288
14N.2	Public Domain, Pedestrian and Vehicular Access .....	p14-290
14N.3	Building Setbacks .....	p14-292
14N.4	Built Form .....	p14-294
14N.5	Heritage .....	p14-296
<b>14R</b>	<b>References.....</b>	<b>p14-299</b>
14R.1	Lindfield Village Green Masterplan	
14R.2	Lindfield Library Site Masterplan	
14R.3	Turrumurra Community Hub Masterplan	
<b>PART 15</b>	<b>LAND CONTAMINATION</b>	
15.1	Land Contamination .....	p15-2
<b>PART 16</b>	<b>BUSHFIRE RISK</b>	
16.1	Introduction .....	p16-2
	Bushfire Risk Management .....	p16-3
<b>PART 17</b>	<b>RIPARIAN LANDS</b>	
17.1	Introduction .....	p17-2
17.2	General .....	p17-3
17.3	Category 1 Environmental Corridor.....	p17-6
17.4	Category 2 Terrestrial and Aquatic Habitat .....	p17-8
17.5	Category 3 Bank Stability and Water Quality .....	p17-10
	Category 3A Watercourse Restoration .....	p17-12
<b>PART 18</b>	<b>BIODIVERSITY</b>	
18.1	Introduction .....	p18-2
18.2	All Greenweb Categories .....	p18-4
18.3	Category - Core Biodiversity Lands .....	p18-6
18.4	Category - Support for Core Biodiversity Lands .....	p18-7
18.5	Category - Landscape Remnant .....	p18-9
18.6	Category - Biodiversity Corridors and Consolidation .....	p18-10
18.7	Category - Canopy Remnants .....	p18-11
	No Net Loss of Biodiversity.....	p18-12

# CONTENTS

18.8	Explanation of Greenweb Categories and Sub Categories .....	p18-15
<b>18R</b>	<b>References</b> .....	p18-18
18R.1	Greenweb Maps .....	p18-20

## PART 19

### HERITAGE ITEMS AND HERITAGE CONSERVATION AREAS

	Introduction.....	p19-2
<b>19A</b>	<b>Subdivision and Site Consolidation.....</b>	<b>p19-5</b>
19A.1	Subdivision and Site Consolidation for New Development within an HCA.....	p19-6
19A.2	Subdivision and Site Consolidation of a Heritage Item.....	p19-7
<b>19B</b>	<b>Demolition.....</b>	<b>p19-9</b>
19B.1	Demolition within HCAs.....	p19-10
19B.2	Demolition related to a Heritage Item.....	p19-11
<b>19C</b>	<b>Development within HCAs: Alterations and Additions.....</b>	<b>p19-13</b>
	Introduction.....	p19-14
19C.1	Local Character and Streetscape.....	p19-15
19C.2	Building Setbacks.....	p19-18
19C.3	Gardens and Landscaping.....	p19-19
19C.4	Access and Parking.....	p19-20
19C.5	Building Design.....	p19-22
19C.6	Roof Forms and Structures Attached to Roofs.....	p19-25
19C.7	Outbuilding and Garden Structures (excluding garages and carports).....	p19-26
19C.8	Fencing.....	p19-27
<b>19D</b>	<b>Development within HCAs: New Buildings.....</b>	<b>p19-29</b>
	Introduction.....	p19-30
19D.1	Local Character and Streetscape.....	p19-31
19D.2	Building Setbacks.....	p19-32
19D.3	Gardens and Landscaping.....	p19-33
19D.4	Building Design.....	p19-34
19D.5	Secondary Dwelling within HCAs.....	p19-35
<b>19E</b>	<b>Heritage Items.....</b>	<b>p19-37</b>
	Introduction.....	p19-38
19E.1	Building Design.....	p19-39
19E.2	Adaptive Reuse.....	p19-40
19E.3	Setbacks.....	p19-41
19E.4	Gardens and Landscaping.....	p19-42
19E.5	Access and Parking.....	p19-43
19E.6	Outbuilding and Garden Structures (excluding garages and carports).....	p19-45
19E.7	Fencing.....	p19-46
<b>19F</b>	<b>Development in the Vicinity of Heritage Items or Heritage Conservation Areas (HCAs).....</b>	<b>p19-47</b>

19F.1	Introduction.....	p19-48
19F.2	Local Character and Streetscape.....	p19-49
19F.3	Building Setbacks.....	p19-51
19F.4	Gardens and Landscaping.....	p19-53
	Fencing.....	p19-54

## SECTION C

### PART 21

#### GENERAL SITE DESIGN

	Introduction.....	p21-2
21.1	Earthworks and Slope .....	p21-3
21.2	Landscape Design .....	p21-5

### PART 22

#### GENERAL ACCESS AND PARKING

	Introduction.....	p22-2
22.1	Equitable Access .....	p22-3
22.2	General Vehicle Access .....	p22-6
22.3	Basement Car Parking .....	p22-8
22.4	Visitor Parking .....	p22-9
22.5	Parking for People with a Disability .....	p22-10
22.6	Pedestrian Movement within Car Parks .....	p22-11
22.7	Bicycle Parking and Facilities .....	p22-12
22.8	Surface Parking .....	p22-13
<b>22R</b>	<b>References .....</b>	<b>p22-15</b>
22R.1	Car Parking Rates .....	p22-16

### PART 23

#### GENERAL BUILDING DESIGN AND SUSTAINABILITY

	Introduction.....	p23-2
23.1	Social Impact .....	p23-3
23.2	Green Buildings .....	p23-4
23.3	Sustainability of Building Materials .....	p23-8
23.4	Materials and Finishes .....	p23-9
23.5	Roof Terraces and Podiums .....	p23-12
23.6	Building Services .....	p23-14
23.7	Waste Management .....	p23-15
23.8	General Acoustic Privacy .....	p23-24
23.9	General Visual Privacy .....	p23-25
23.10	Construction, Demolition and Disposal .....	p23-28
<b>23R</b>	<b>References .....</b>	<b>p23-31</b>
23R.1	Examples of ESD Measures .....	p23-32

# CONTENTS

23R.2	Green Star Rating Information Sheet .....	p23-35
23R.3	Checklist of ESD Measures to be submitted with development application and updated for CC approval .....	p23-38
23R.4	Council's Standard Bin Characteristics .....	p23-39
23R.5	Council's Collection Vehicle Characteristics.....	p23-40
23R.6	Vehicle Access / Turning Circles .....	p23-41
23R.7	What is a Waste Management Plan? .....	p23-42
23R.8	Waste Management Plan .....	p23-43
23R.9	Waste Guidelines .....	p23-48

## PART 24

### 24A

24A.1	Development Type for Water Management.....	p24-4
24A.2	Location of Development for Water Management.....	p24-5
24A.3	Locating the Development on Site.....	p24-7

### 24B

24B.1	General .....	p24-10
24B.2	Stormwater Disposal from Location A Properties .....	p24-11
24B.3	Stormwater Disposal from Location B Properties .....	p24-15
24B.4	Stormwater Disposal from Location C Properties .....	p24-16
24B.5	Stormwater Disposal from Location D Properties .....	p24-17
24B.6	Relocating Pipes and Modifying or Extinguishing Easements Where Council is the Authority .....	p24-28

### 24C

24C.1	General .....	p24-30
24C.2	Effective Stormwater Management .....	p24-31
24C.3	General Controls for On-Site Stormwater Management .....	p24-32
24C.4	Mandatory Rainwater Tank Requirements .....	p24-35
24C.5	Controls for On-site Detention .....	p24-37
24C.6	Stormwater Quality Control .....	p24-39

### 24D

24D.1	General .....	p24-42
24D.2	Flood Studies and the Design Flood Standard .....	p24-43
24D.3	Development Over or Adjacent to a Natural Waterbody, Open Channel or Drainage Depression .....	p24-44
24D.4	Development Over or Adjacent to an Underground Pipeline .....	p24-46
24D.5	Tennis Courts and Other Sporting Surfaces .....	p24-48
24D.6	Fences .....	p24-49
24D.7	Swimming Pools and Spas .....	p24-50

### 24E

24E.1	Design Procedures .....	p24-52
-------	-------------------------	--------

### 24F

24F.1	On-site Wastewater Management .....	p24-58
-------	-------------------------------------	--------

### 24R

## WATER MANAGMENT

Introduction.....	p24-2
<b>Site Design for Water Management.....</b>	<b>p24-3</b>
<b>Stormwater Discharge .....</b>	<b>p24-9</b>
<b>On-site Stormwater Management .....</b>	<b>p24-29</b>
<b>Existing Drainage Systems .....</b>	<b>p24-41</b>
<b>Road and Trunk Drainage Design .....</b>	<b>p24-51</b>
<b>On-site Wastewater Management .....</b>	<b>p24-57</b>
<b>References .....</b>	<b>p24-59</b>

24R.1	Rainwater Tank Size Guide .....	p24-60
24R.2	Drainage Catchments for On-site Detention.....	p24-62
24R.3	Permitted Site Discharge and Minimum On-site Detention Storage Volumes .....	p24-64
24R.4	On-site Detention Calculation Sheet .....	p24-65
24R.5	Design of On-site Detention Systems (OSD).....	p24-66
24R.6	Design of Property and Inter-allotment Drainage Systems ....	p24-71
24R.7	Flood Study Requirements .....	p24-78
24R.8	Terms of Positive Covenants and Restrictions on Use .....	p24-82
24R.9	OSD Exemption Map .....	p24-94