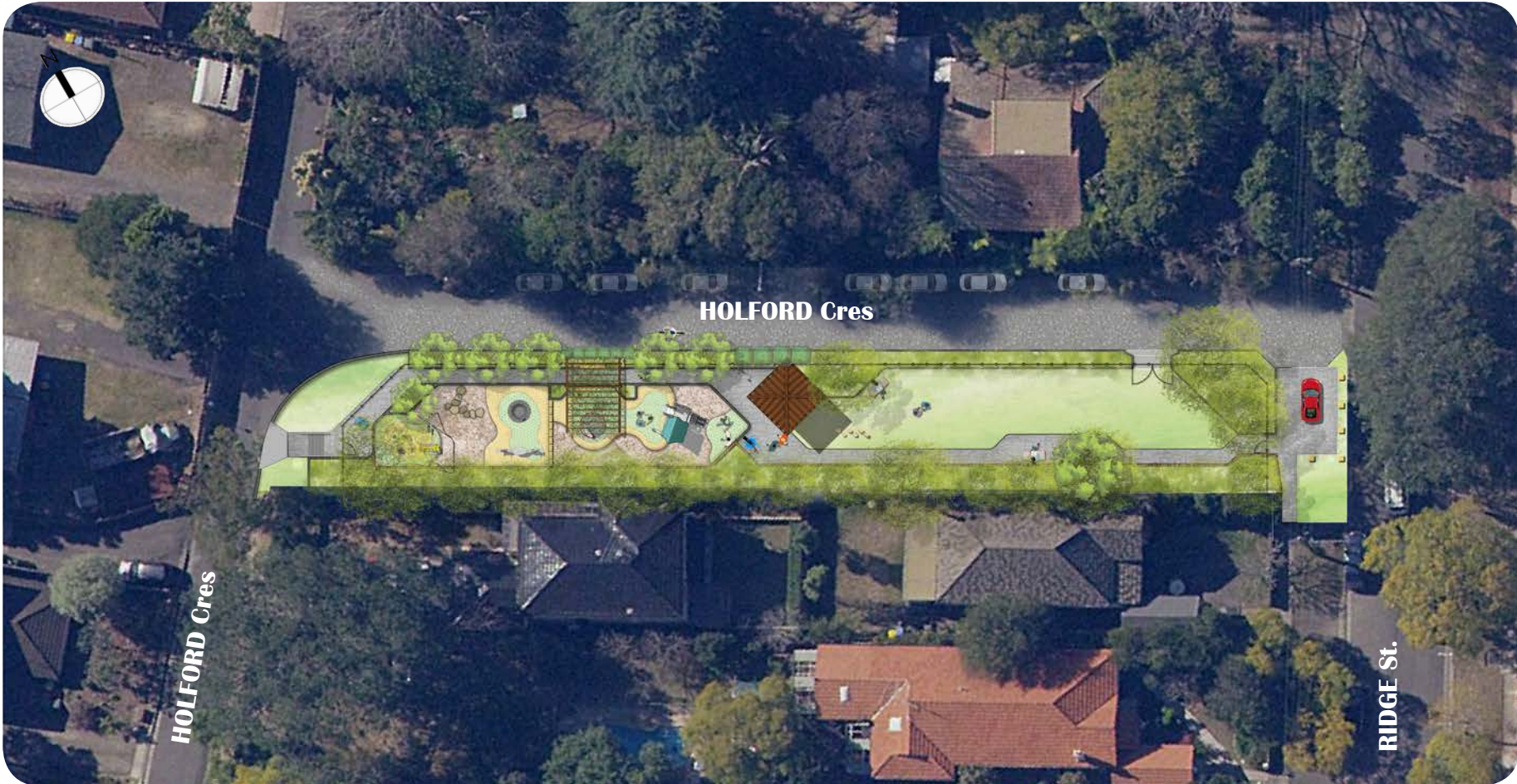


CONCEPT PLAN

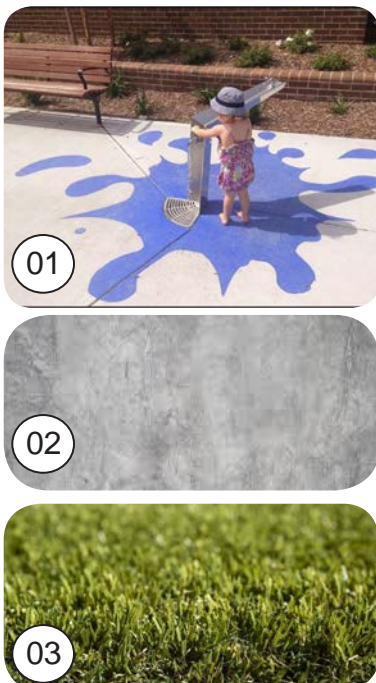
Nar-rang Reserve Playspace - CONCEPT PLAN - Rev B

PLEASE NOTE: FINAL PLAN MAY UNDERGO SOME CHANGES.



• Site Plan

CAN I STAY THERE?



Upgrade Existing Picnic Setting to provide:

- Accessible picnic table located centrally to increase parental supervision
- Accessible drinking fountain with splash graphic on the ground
- Shelter for picnic / Space to relax
- Extend concrete pavement
- Increased turfed area



Garden beds to provide:

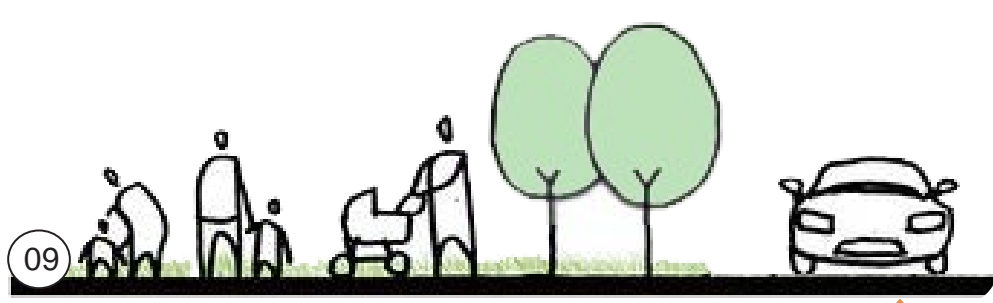
- New trees provide shade throughout the play area.
- Colourful and native planting enhances the reserve for wildlife and allows opportunities for nature and sensory play.
- Softening to the road and adjoining property
- Defines edge of pathway



Landscape Features to provide:

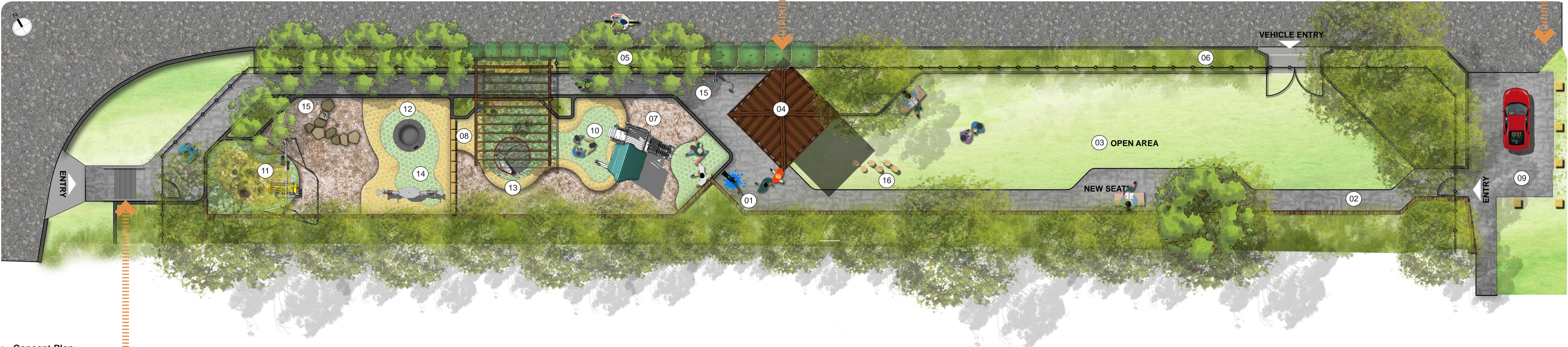
- New accessible seat covered by tree canopy
- Sandstone boulder edge for edging and sitting
- Rubber softfall provides access for those with limited mobility.
- New pathways provide connection within the reserve and to the street.

CAN I GET THERE?



Carpark Entry Area to Provide:

- Accessible car space - level with the main entrance allow ease of access
- Formalised entry gate with park name
- Maintenance vehicle access to park
- Accessible pathway throughout



• Concept Plan

Legend

- Turf
- Concrete
- Garden Bed
- Softfall Rubber
- Softfall Rubber
- Softfall Mulch
- Bubbler
- Existing Tree
- Proposed Tree

CAN I PLAY THERE?



Junior Discovery Area to provide:

- Sheltered space
- Area for slighter older children to branch out safely
- Native plantings
- Role playing
- Balancing & Climbing



Dynamic Play Equipment to provide:

- Meeting place for children where they can stand, sit and chat while playing
- Developing children's motor skills, balance and muscle strength
- Training social-emotional skills such as turn-taking, tolerance and empathy
- Equipment provides support ,where possible, for those with mobility issues through hand, foot or backrests.



Imagination Play Equipment:

- Cubby houses are places to hide and be alone or interact with others through role play
- Wizard House (10) and talk tubes (15) in conjunction with accessible path provides opportunity for imagination play.



Balancing Play Equipment:

- Develops a sense of balance + concentration opportunity to play 'floor is lava', children also develop skills in turn-taking, consideration of others and cooperation.
- Stepping logs to be a replacement for existing balancing items

Toddler area to provide:

- Soft level surface, Rubber & Mulch
- Parent/child involvement
- Opportunity for cross age play
- Accessible play equipment
- Socialising
- Inter generational play

