

PART 14R

14R References

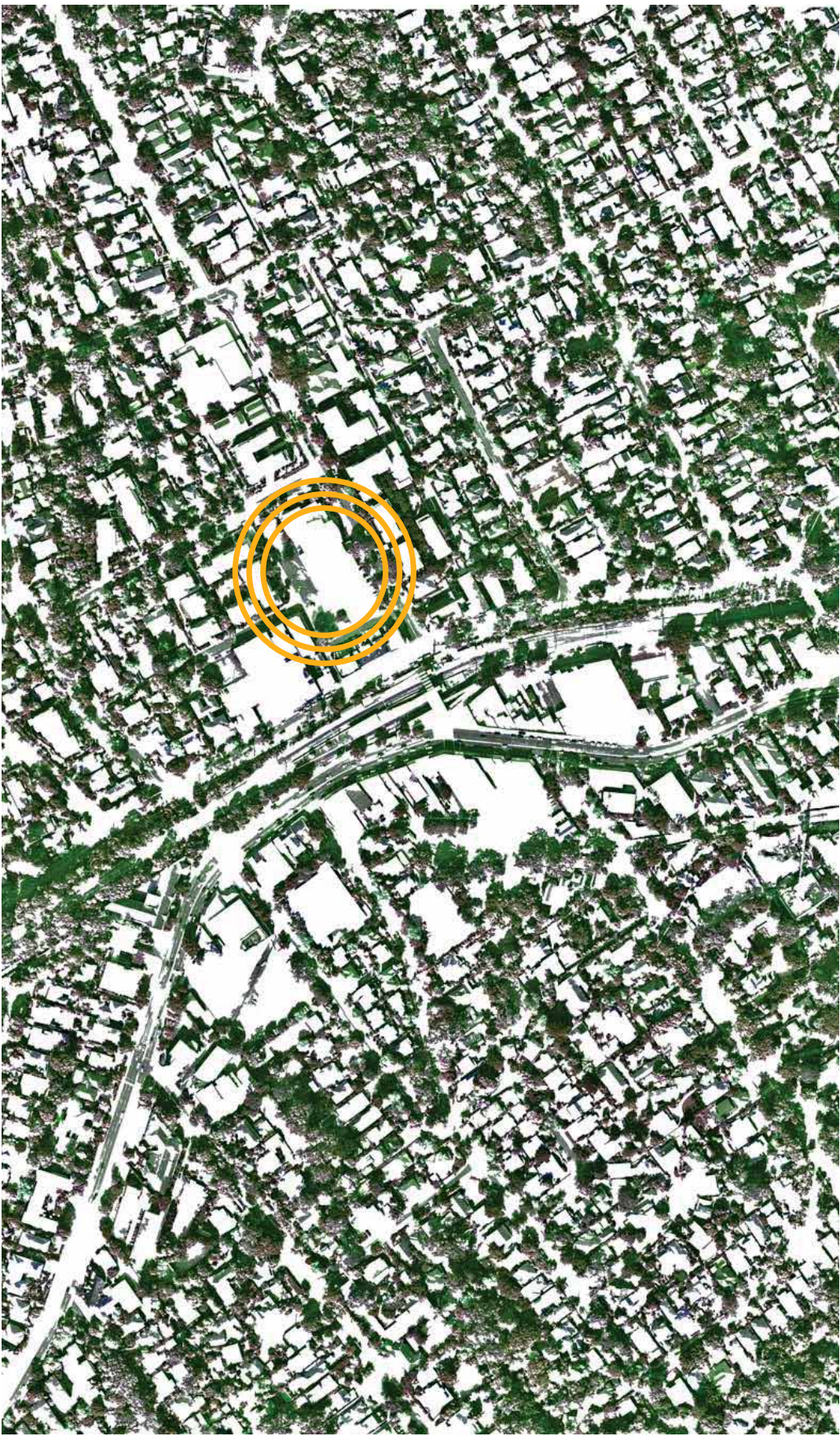
14R.1 Lindfield Village Green Masterplan

REFERENCES

Lindfield Village Green

Competition Presentation

March 2015



JMD design



tonkin
greer
ARCHITECTS

NORTHROP

PARKING & TRAFFIC
CONSULTANTS

principles

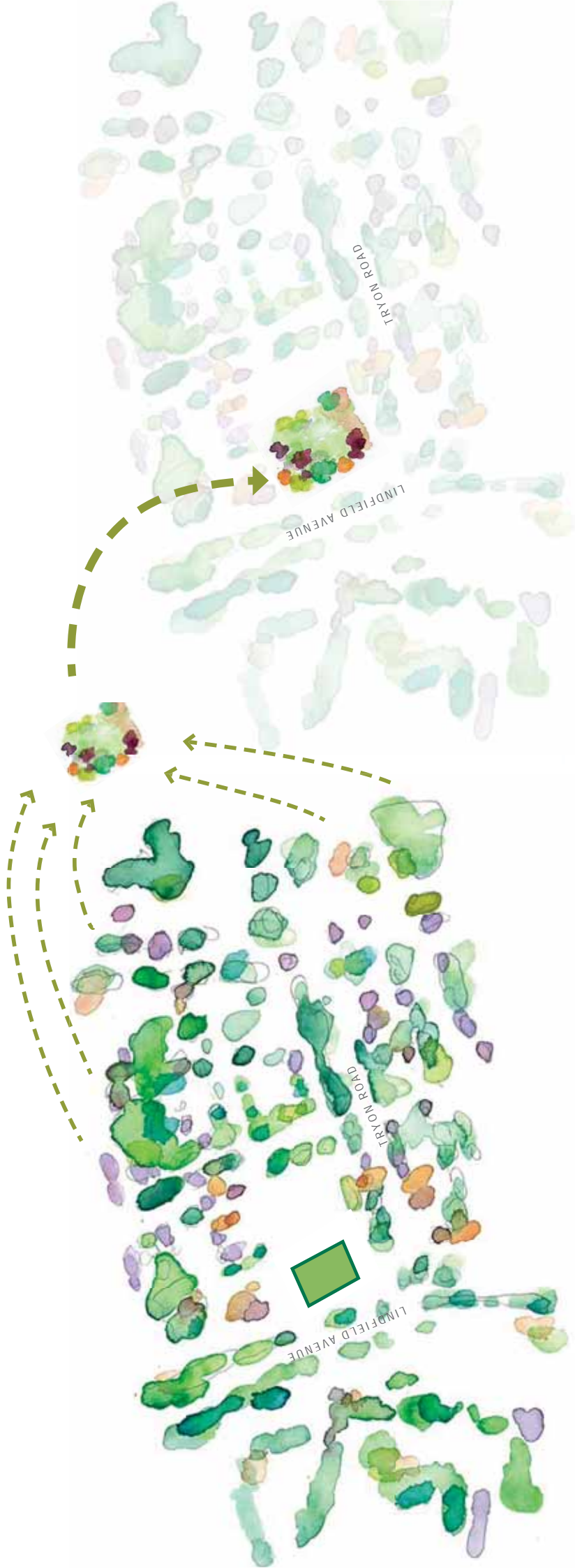
the garden & the ornament



garden the green

distill the character of Lindfield's gardens

make the Green Garden



the communities front garden

address the street

a place to share in the comings and goings of the suburb



a place to meet neighbours

a place for casual encounters

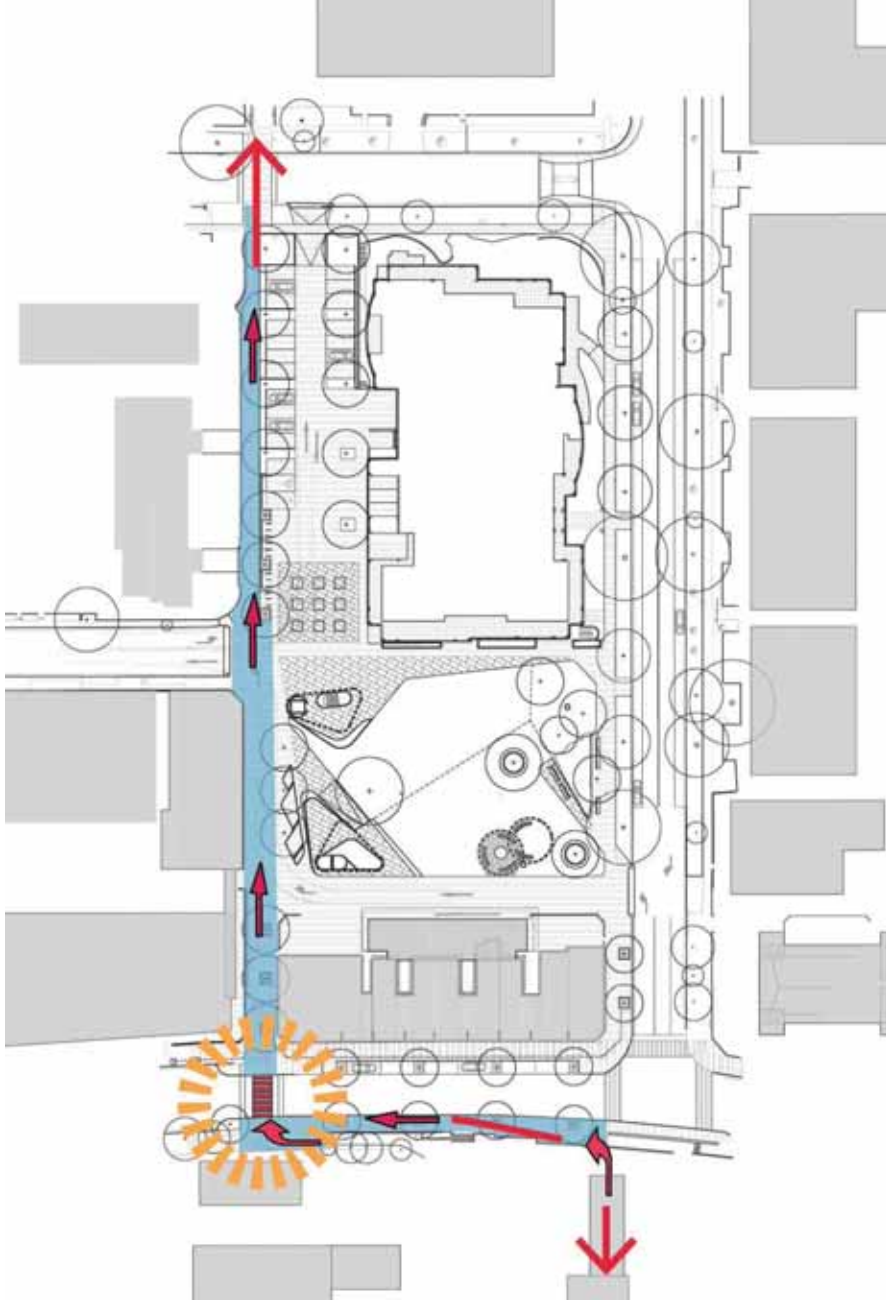
a place to bump into the community

open toward the church

structural elements

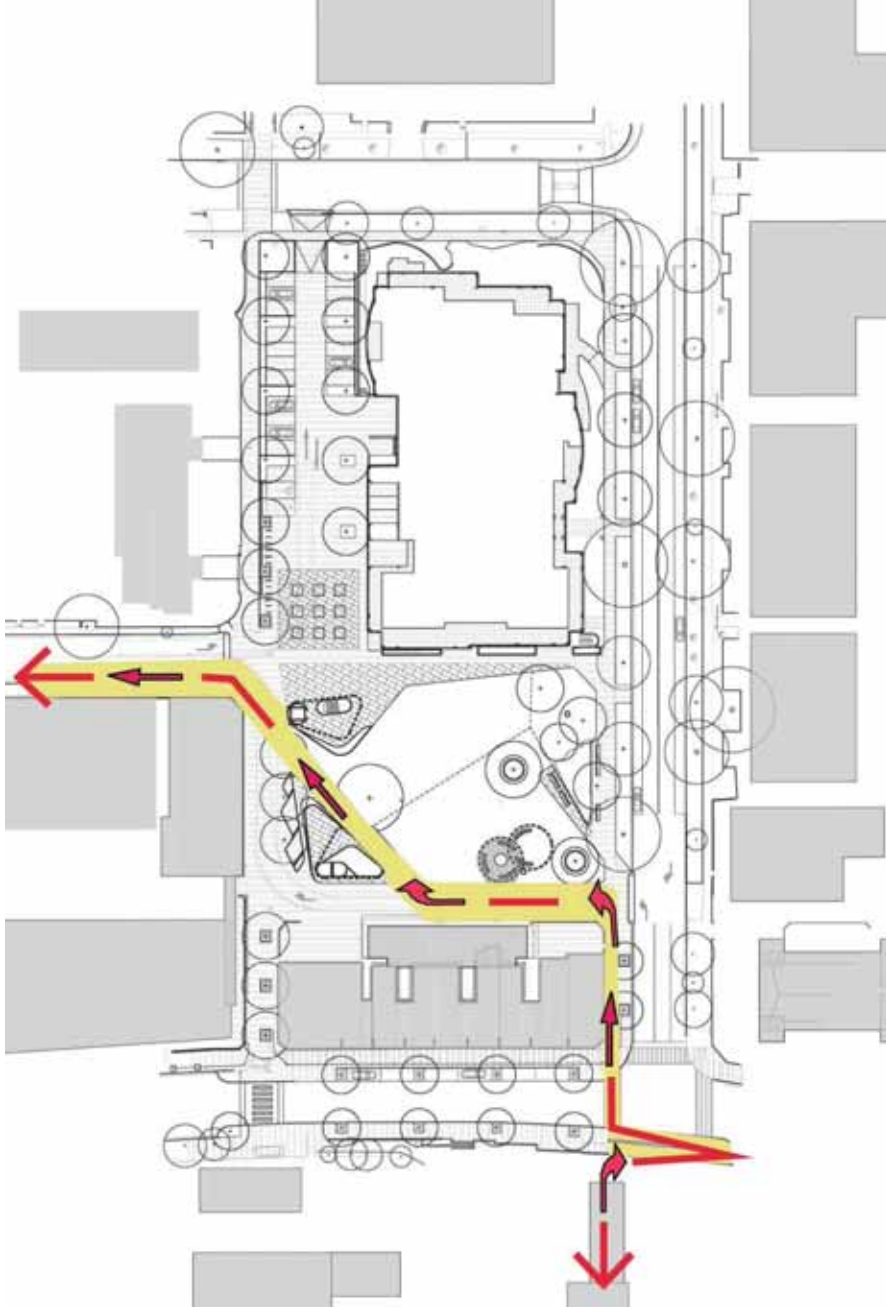
Pedestrian desire lines

station to Kochia Ln
new pedestrian crossing



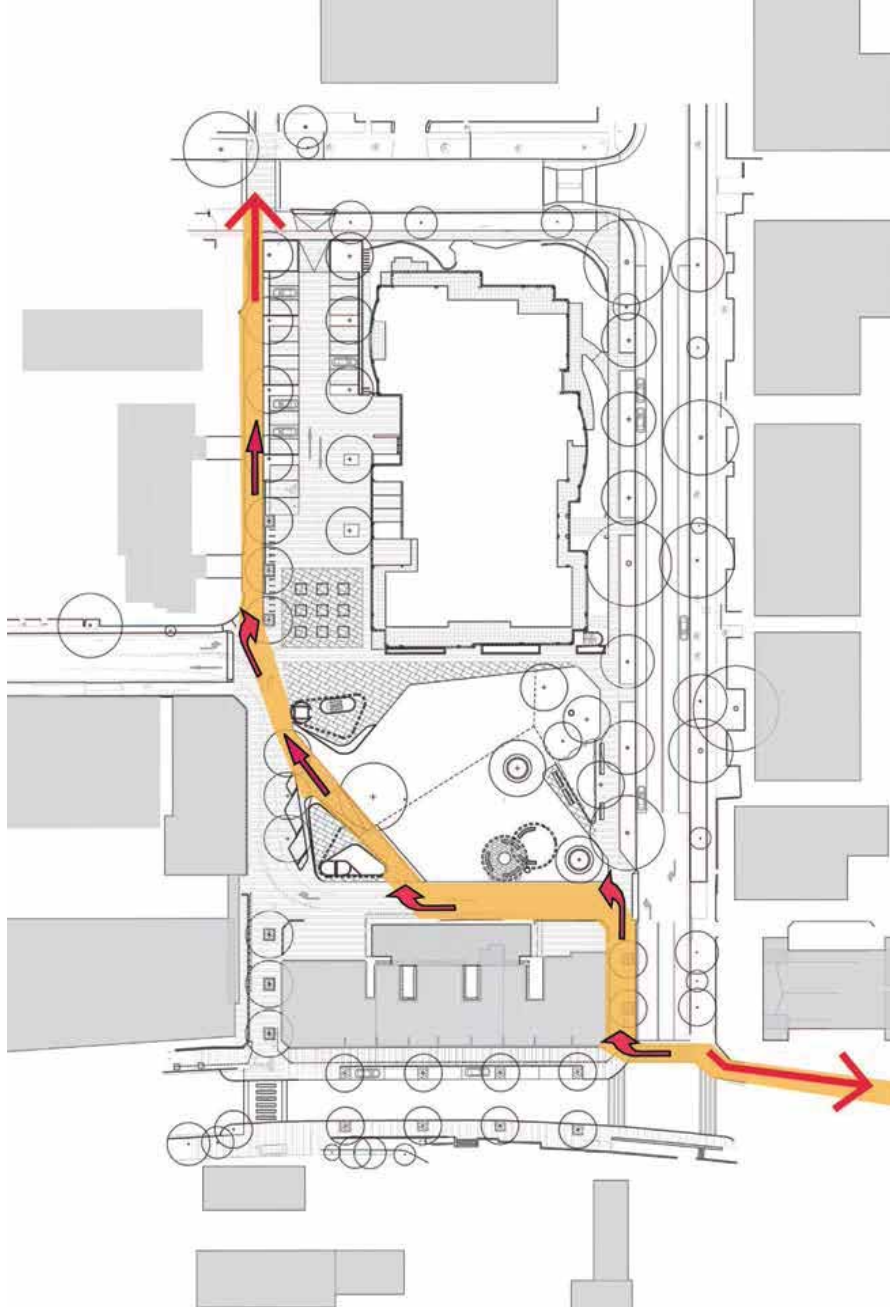
Pedestrian desire lines

station to Havilah Ln



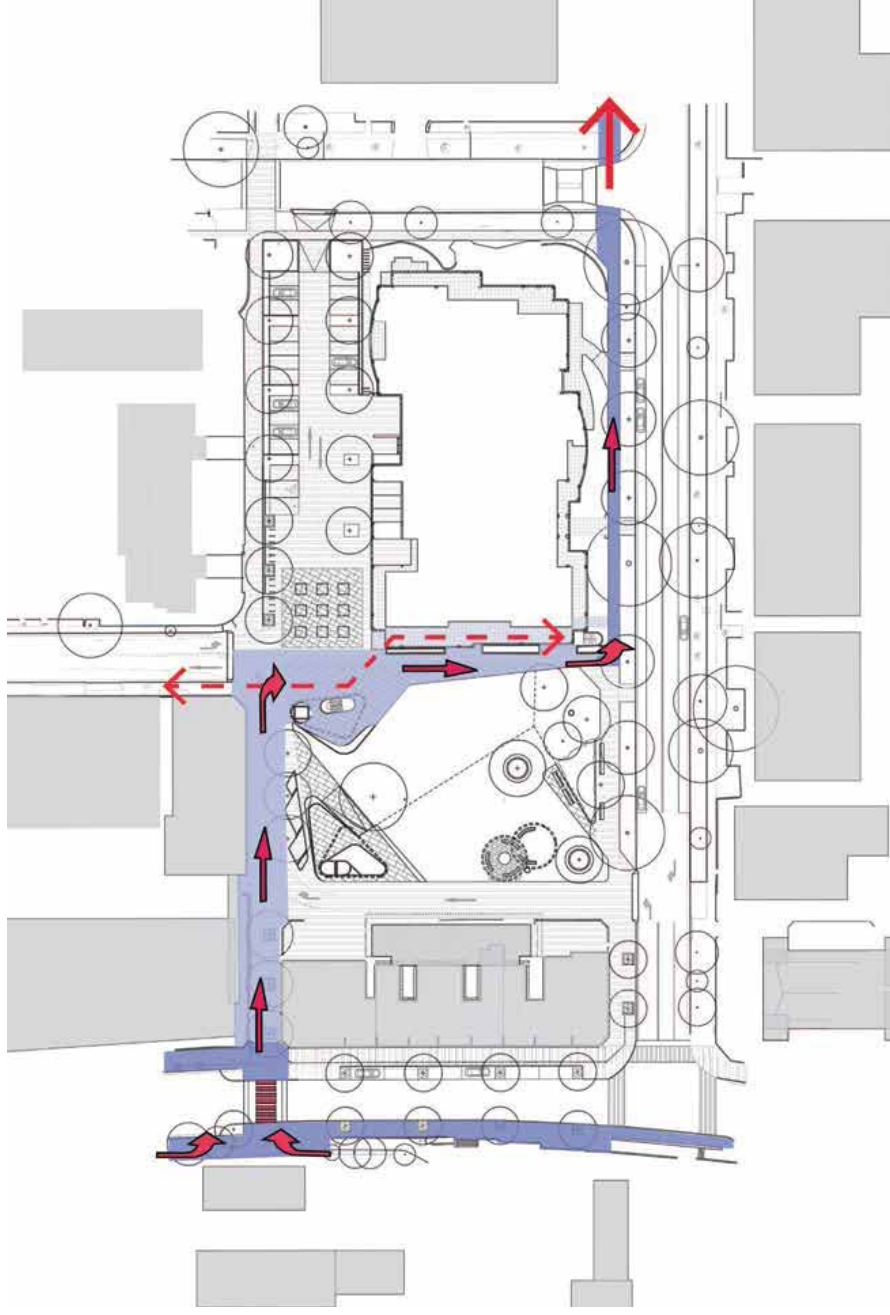
Pedestrian desire lines

Lindfield Ave - Kochia Ln

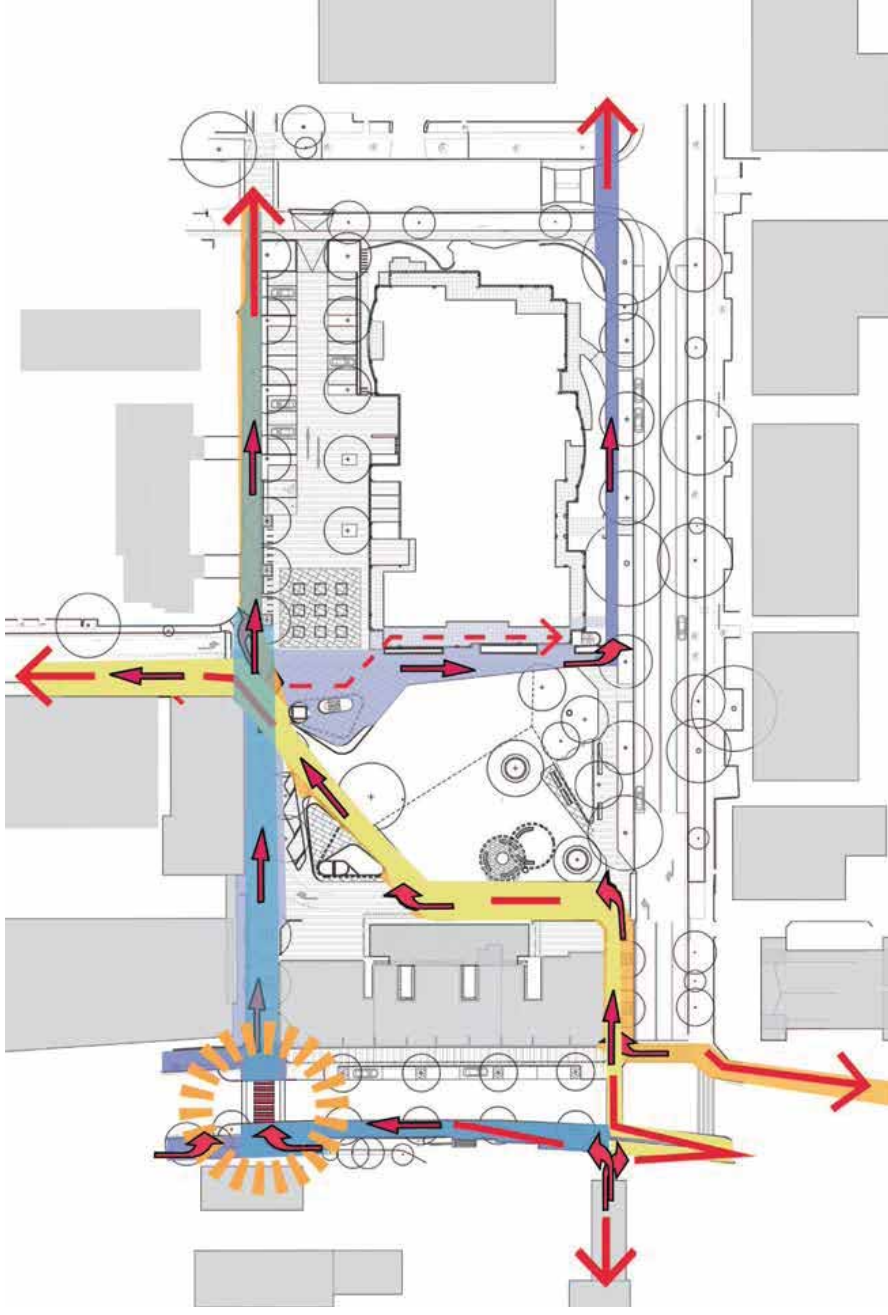


Pedestrian desire lines

Lindfield Ave - Tryon Rd



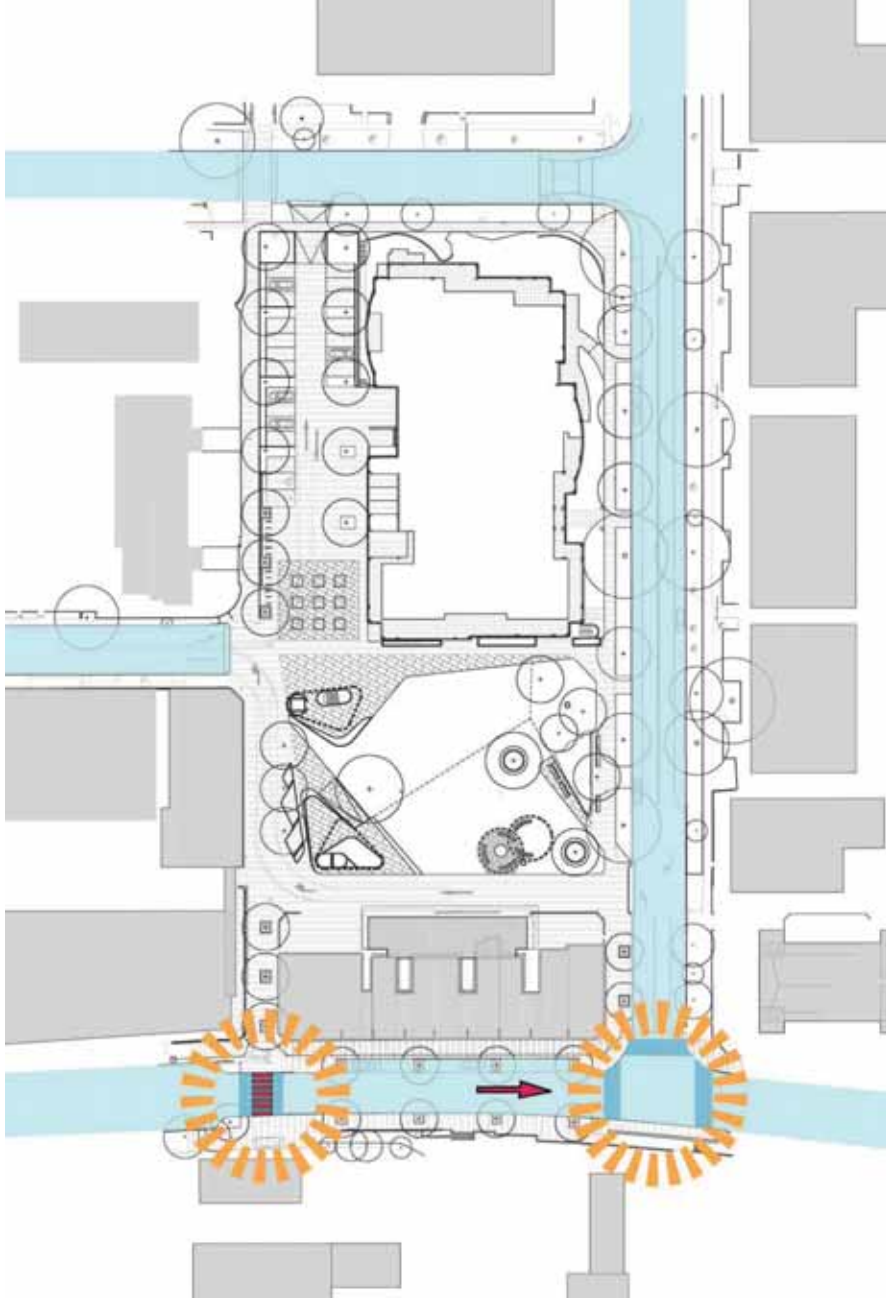
Pedestrian desire lines



new traffic conditions

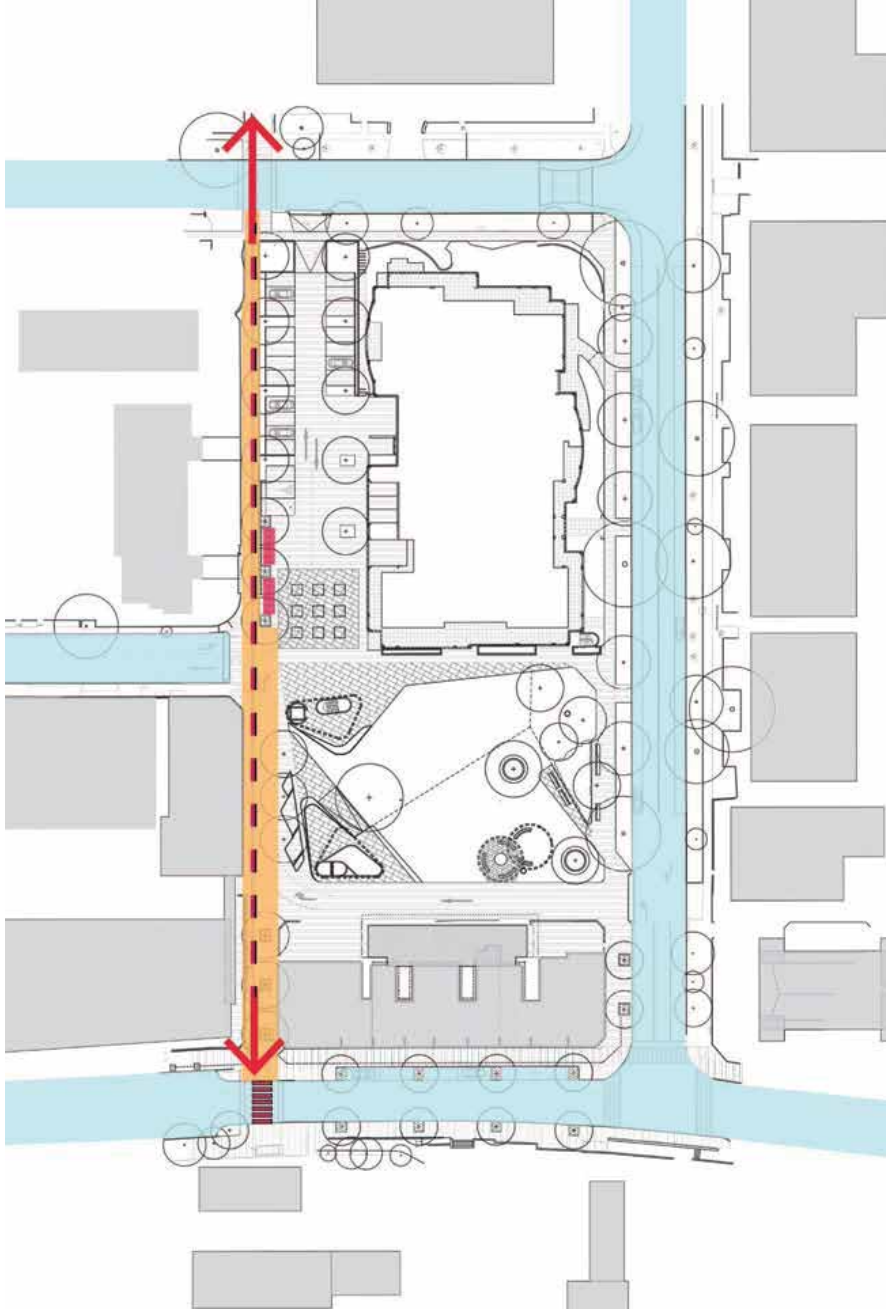
Kochia Ln closed

signalised intersection moved to Tryon rd



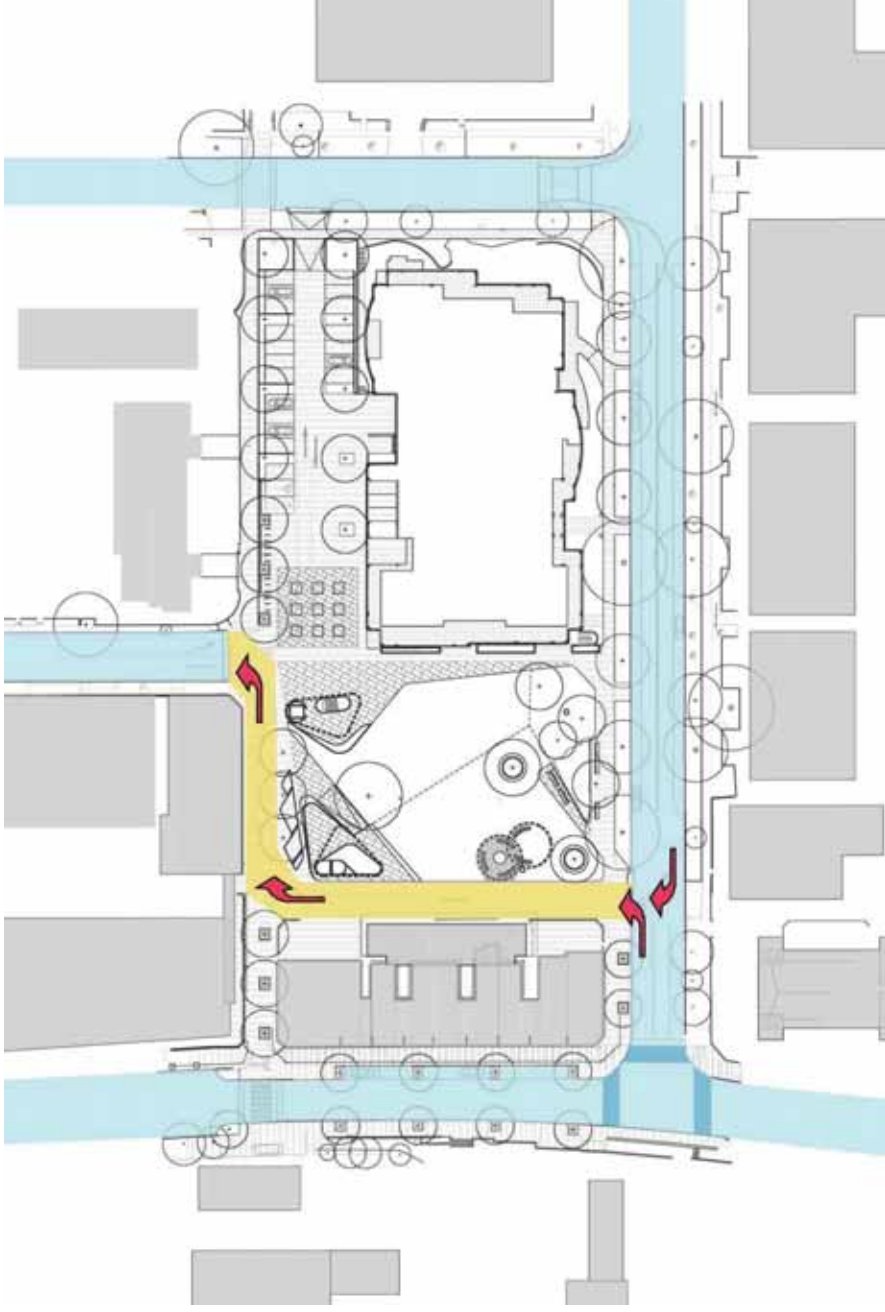
shared path

shared pedestrian cycle way: Kochia Ln



shared zone

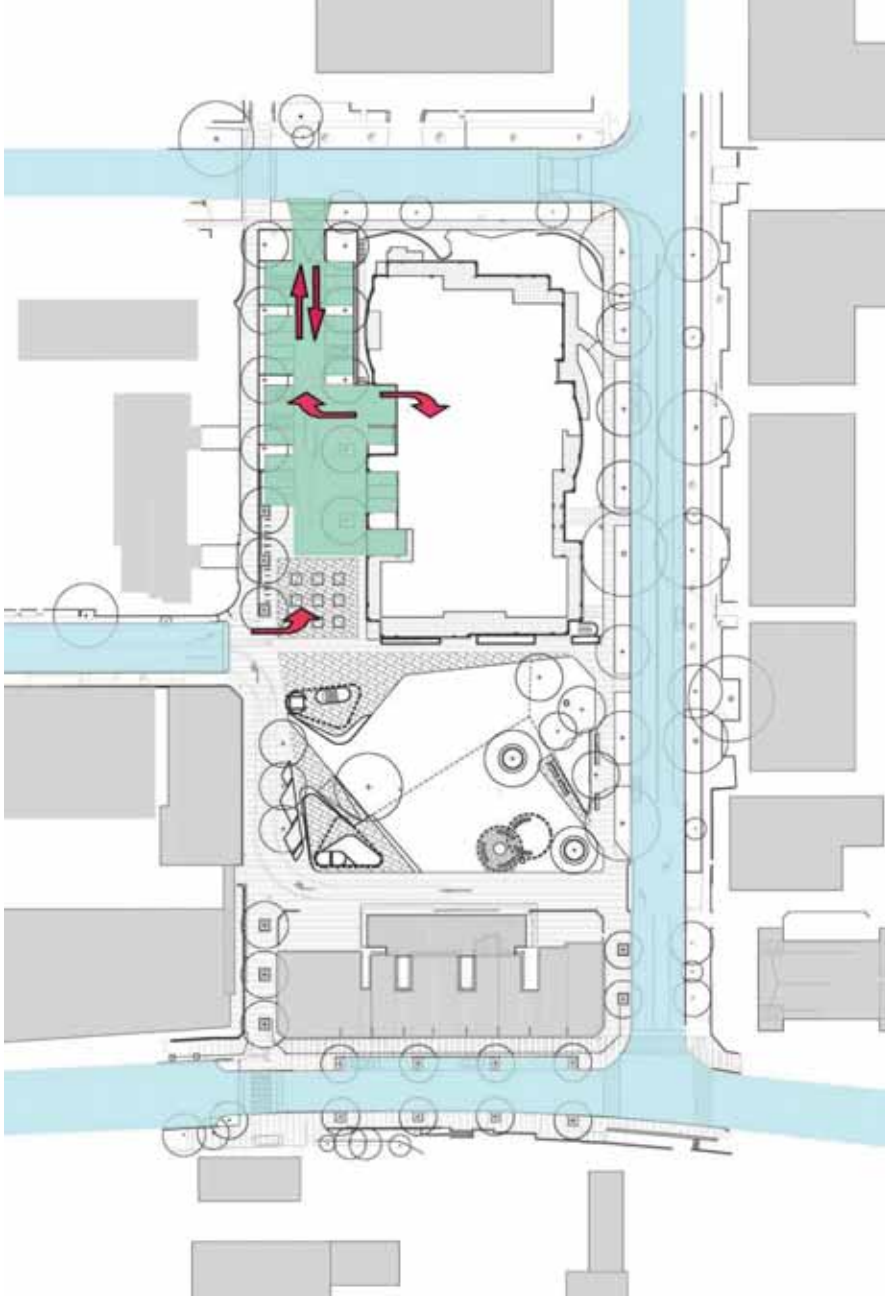
one way: Chapman Ln to Havilah Ln



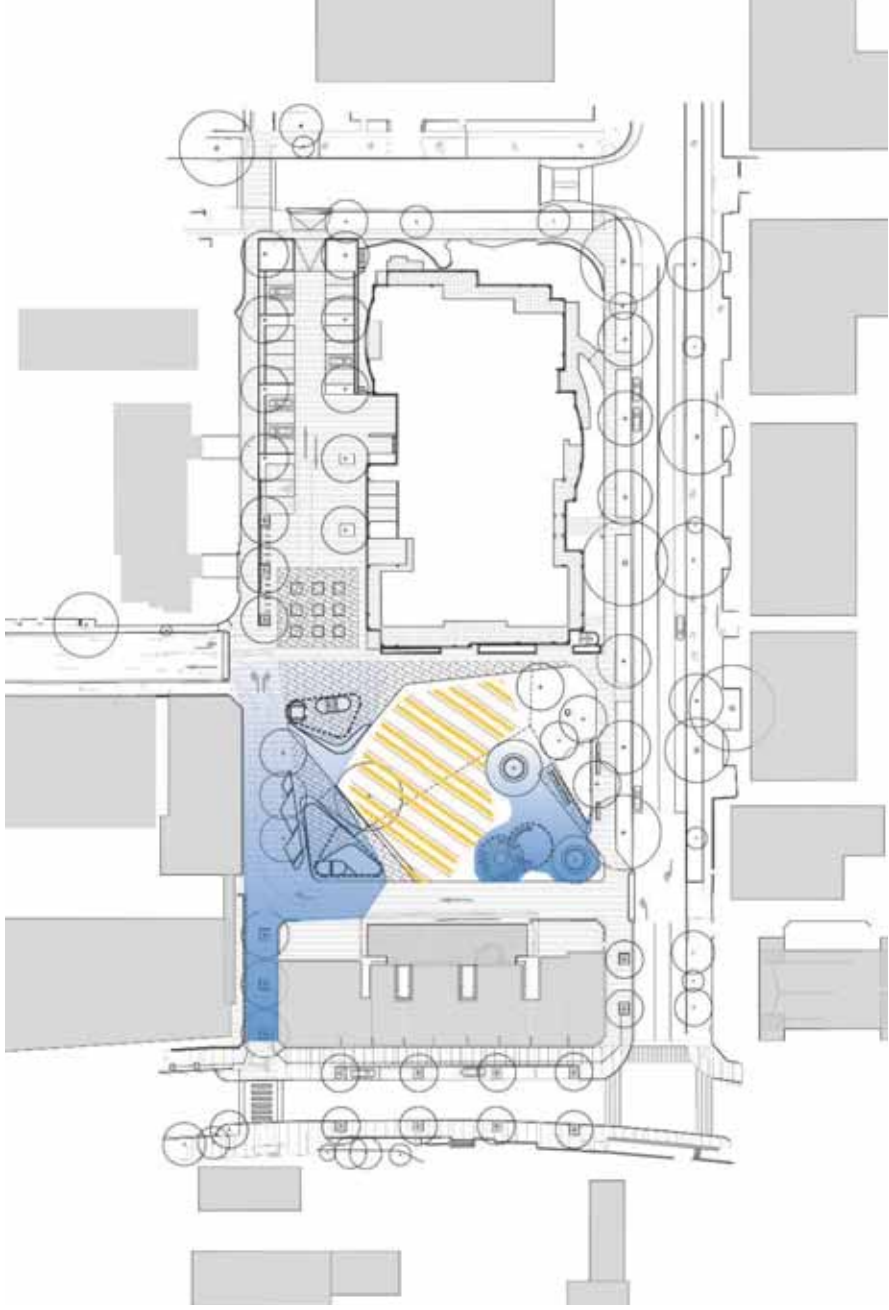
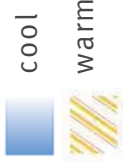
on-grade parking

entry & exit: off Milray St

one way through link: Havilah Ln to Milray St



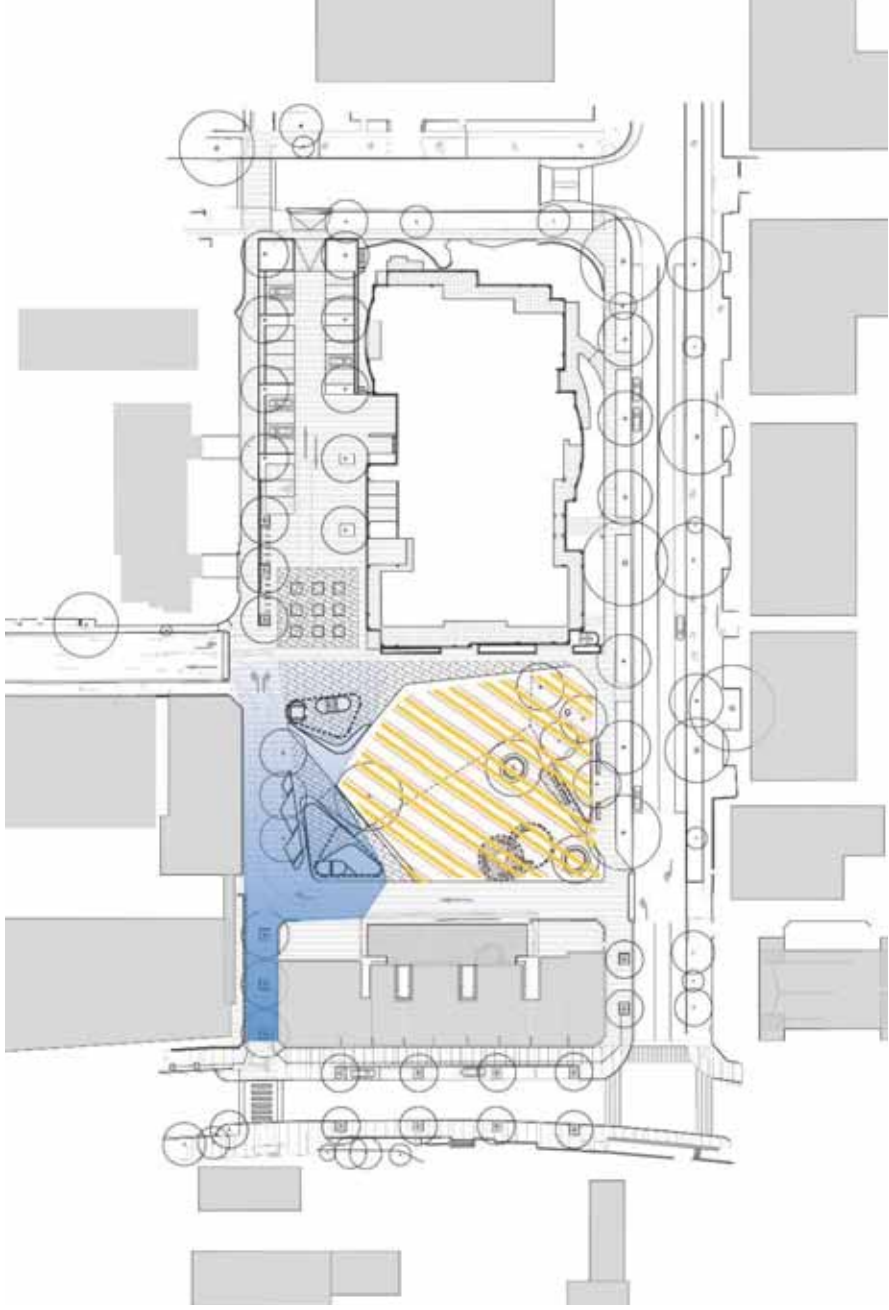
summer solar exposure



winter solar exposure

cool

warm



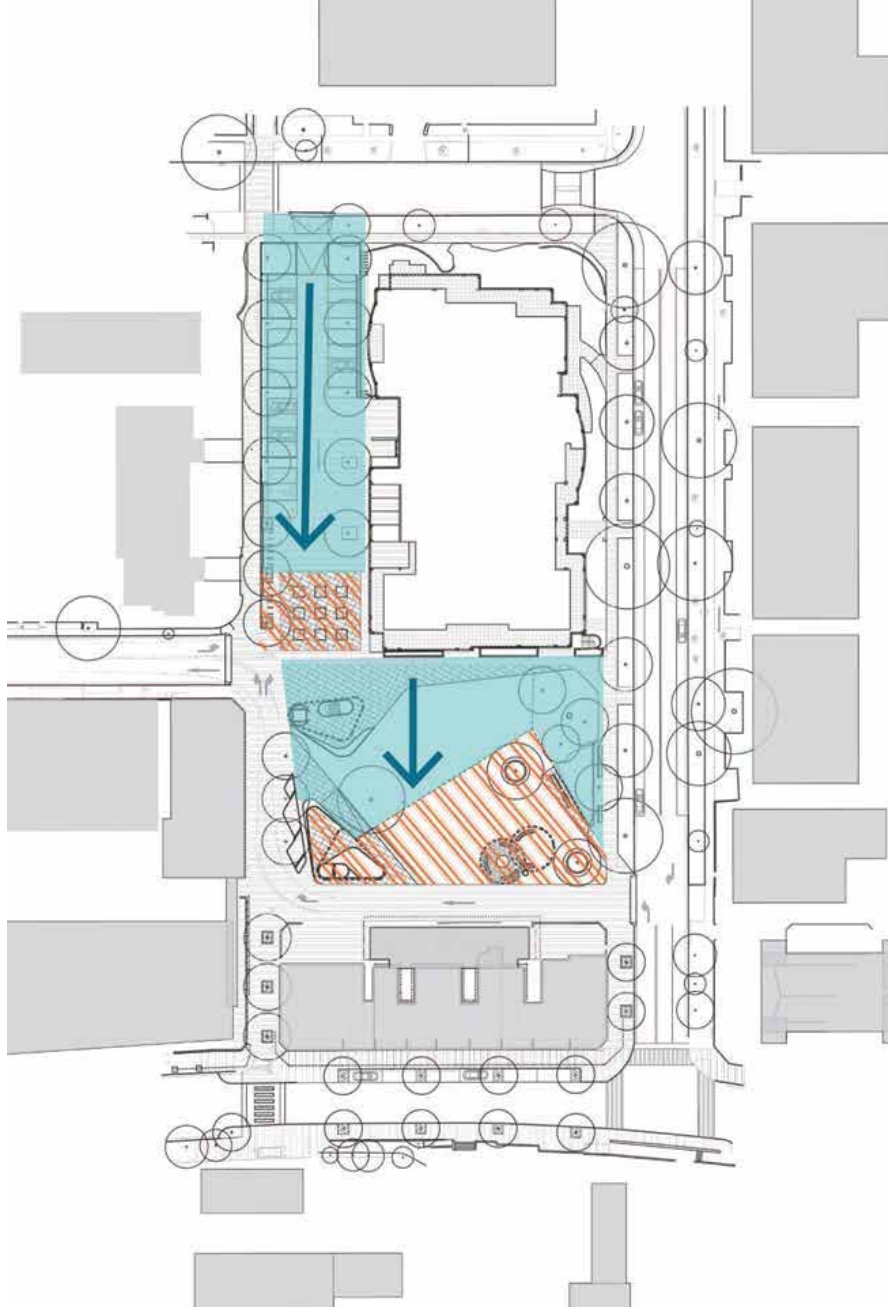
slope



gentle slope



incline



master plan



Lindfield Avenue



the green



the plaza

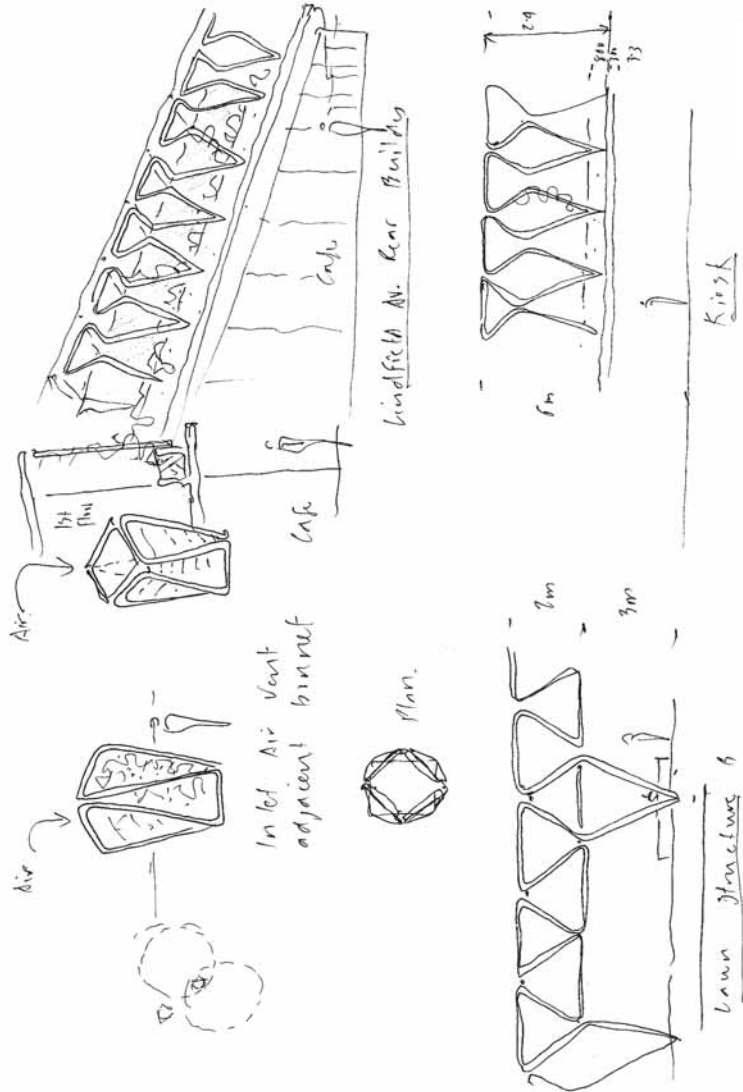
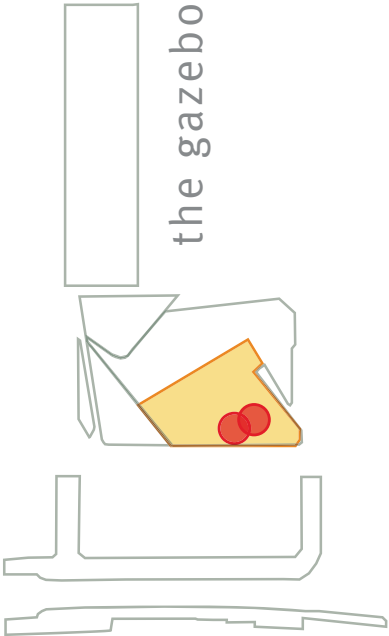


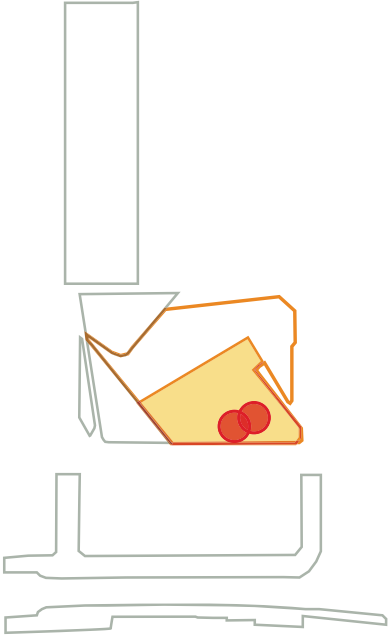
master plan

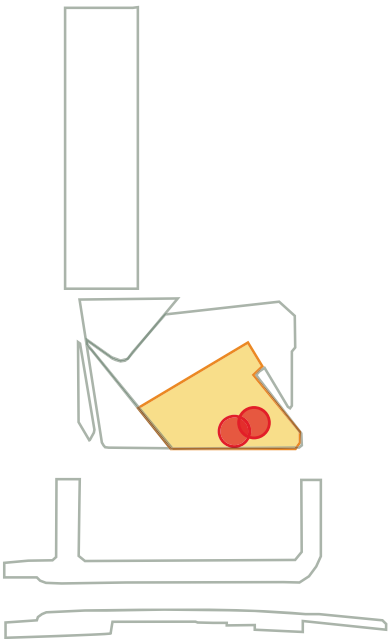




the gazebos







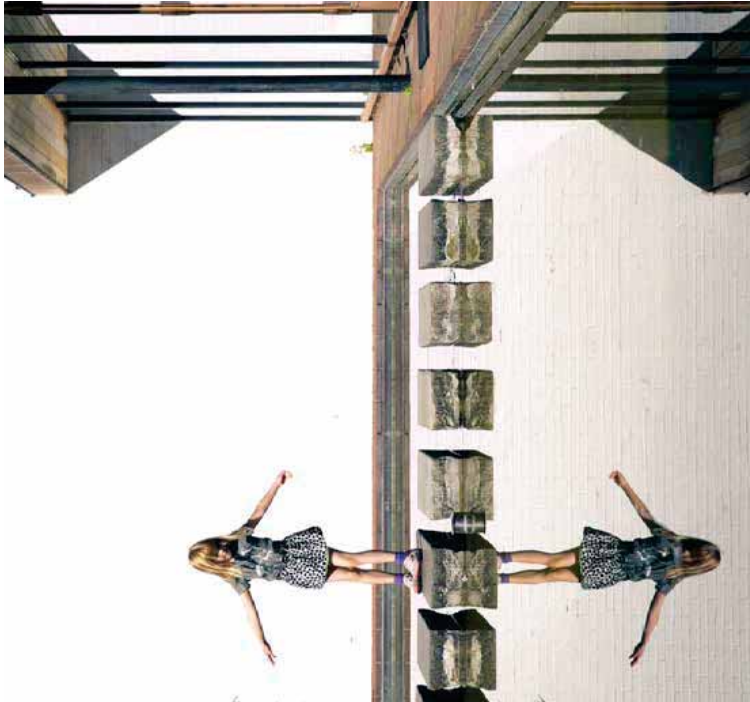
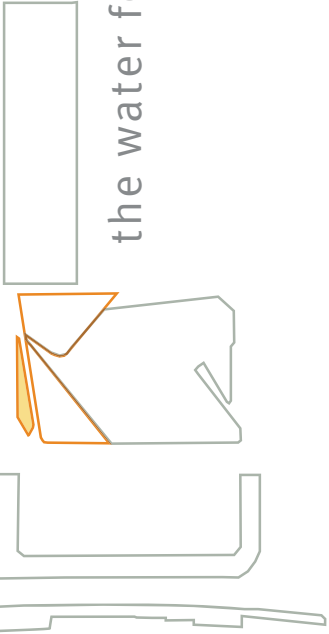
the north plaza



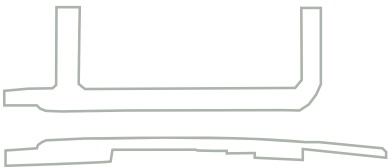
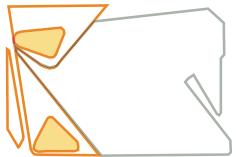
the north plaza



the water feature



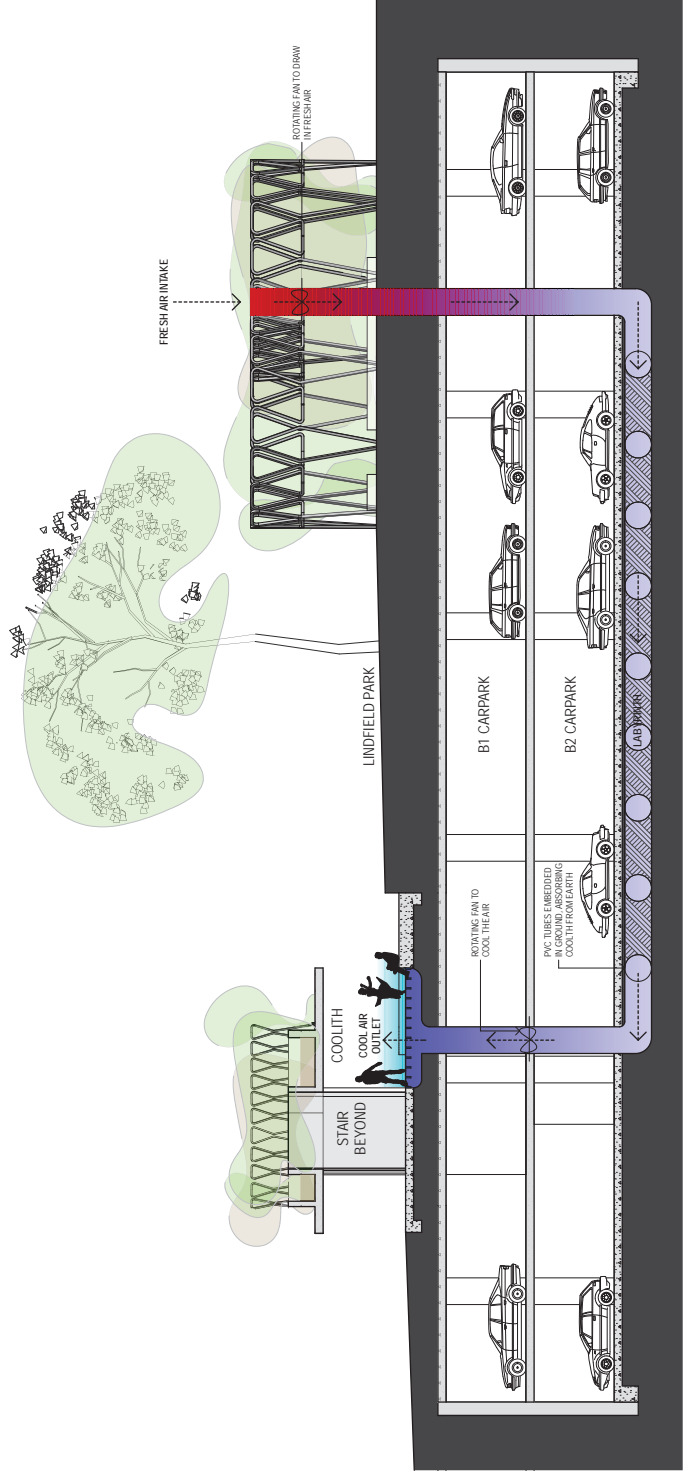
the pavilions



Hiroshi Senju, Museum Karuizawa, Japan - Ryue Nishizawa



coolth plaza



park usage

small event



plaza usage

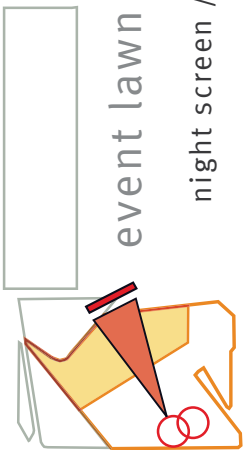
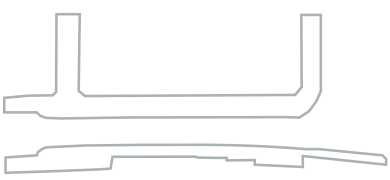
market day



expanded event lawn

festival





event lawn

night screen / stage

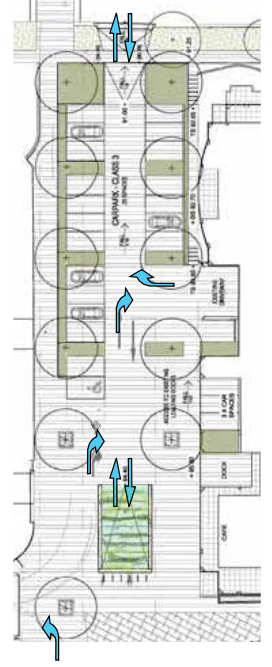


Lindfield Avenue

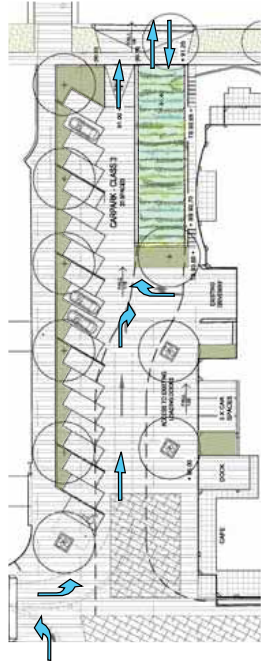


on-grade parking

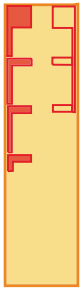
entry off Milray St



parking entry option c



parking entry option b

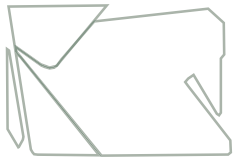


WSUD gardens



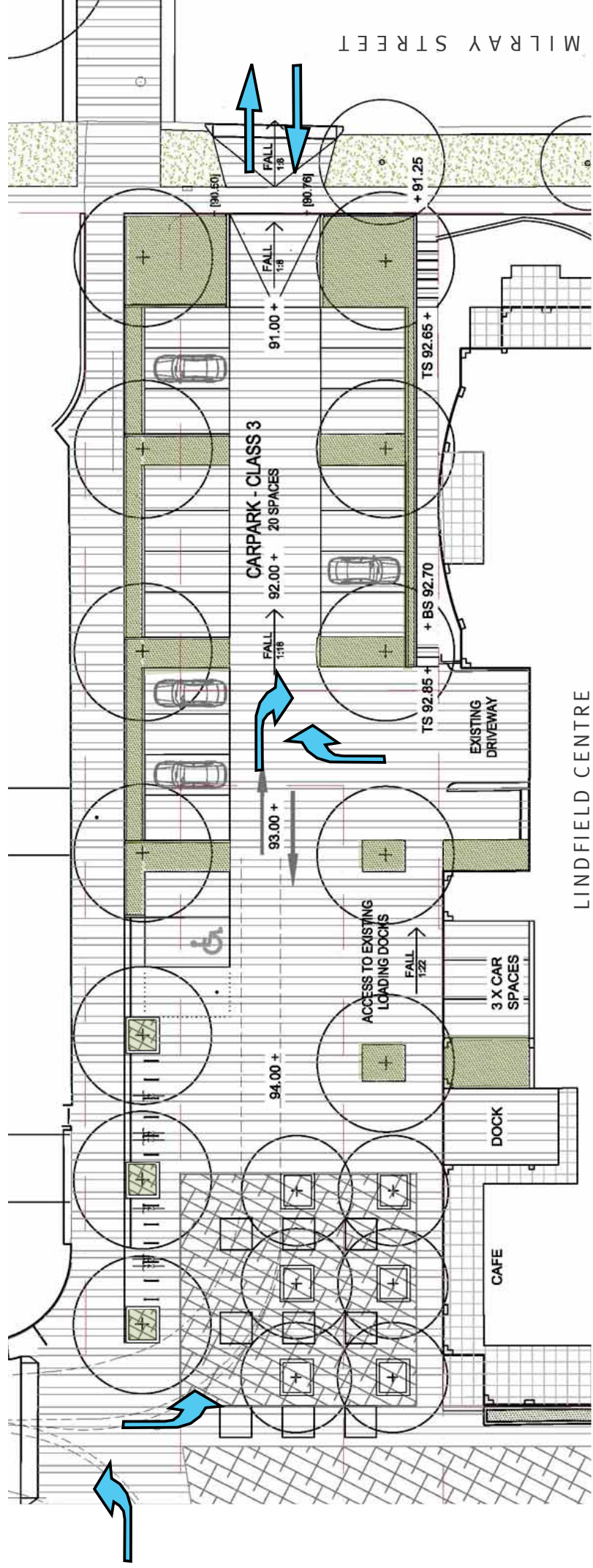


market mode



on-grade car park

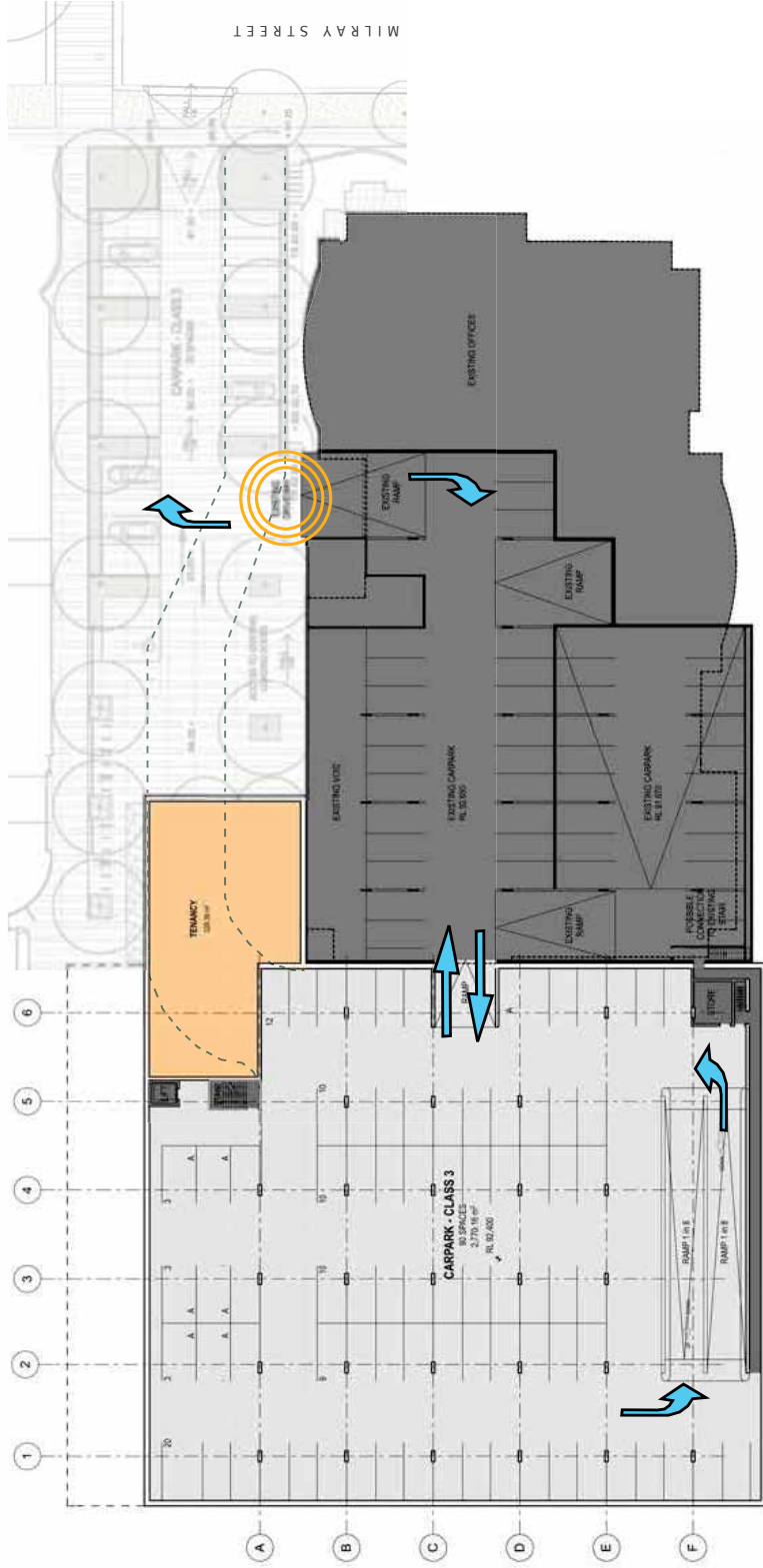
preferred car park entry



basement level 1

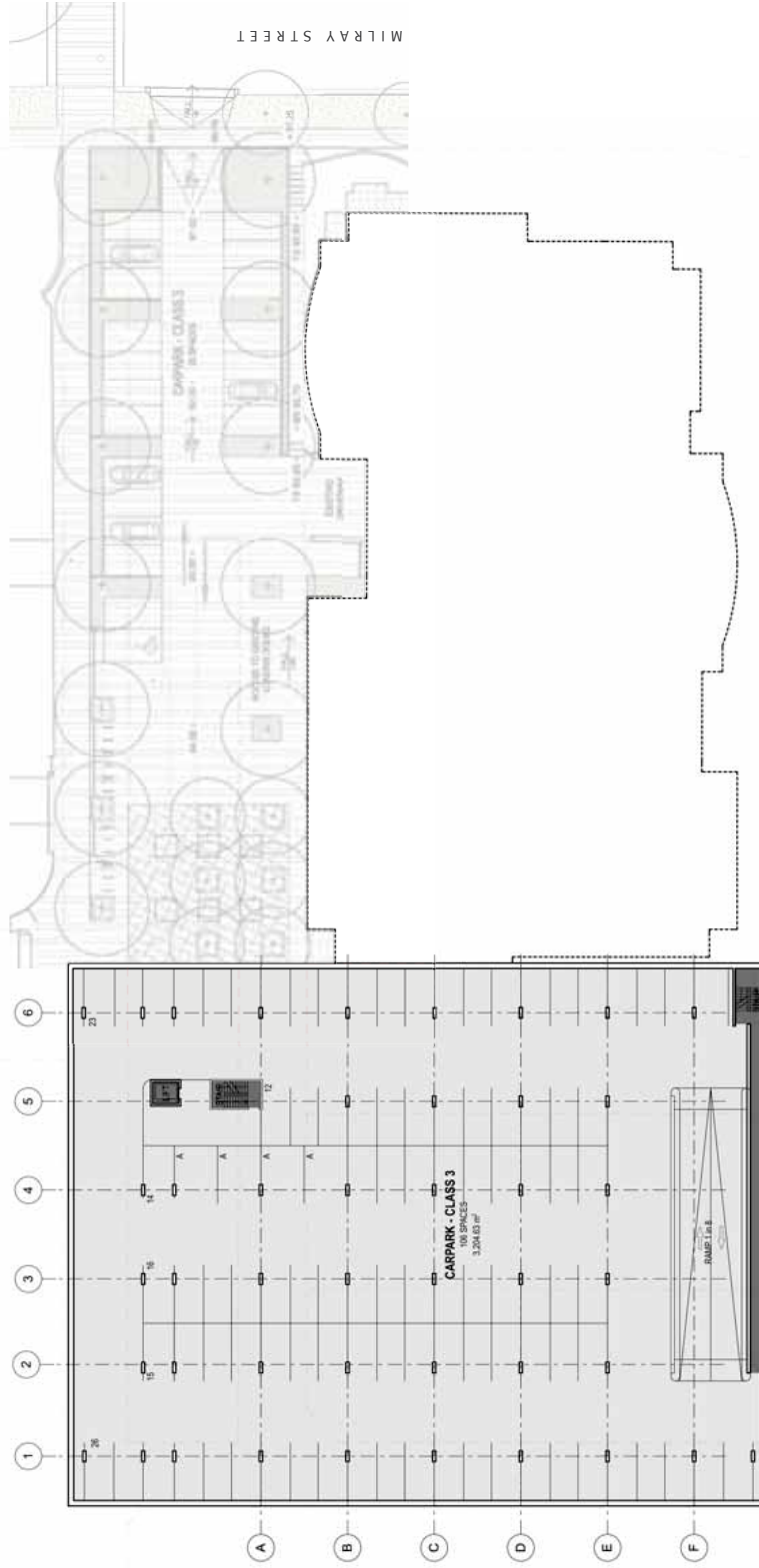
○ preferred car park entry

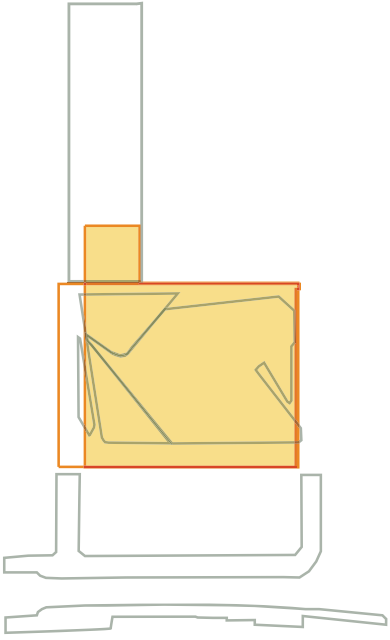
--- alternative car park entry



basement level 2

subject to funding





materials



Patio de los Navarros, Sevilla



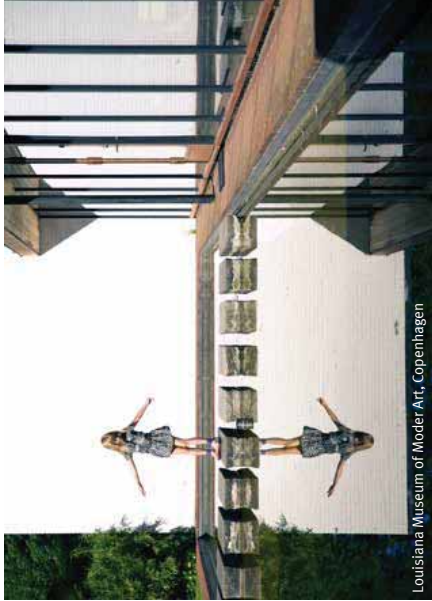
Karl Johans Gate, Oslo



Paddington Reservoir, Sydney, JMD Design



Centenary Square Paramatta by JMD Design



Louisiana Museum of Modern Art, Copenhagen



Centenary Square Paramatta by JMD Design



Hyle Park London



Sommerville cinema Perth

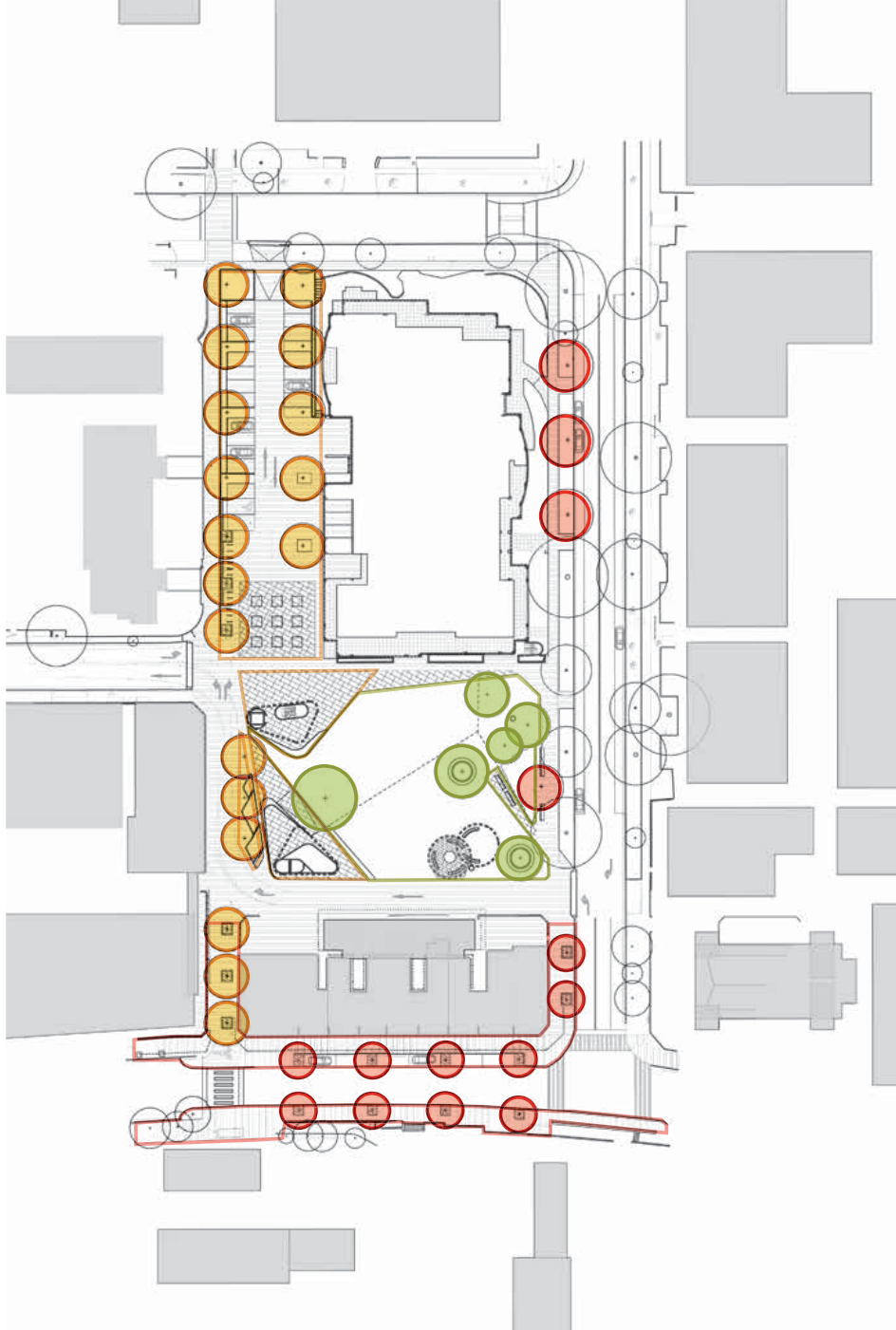


Landhausplatz



Santa Cole Neoliviano

tree planting



tree planting

plaza



Conybia maculata



Tristanopsis laurina



Tristanopsis laurina

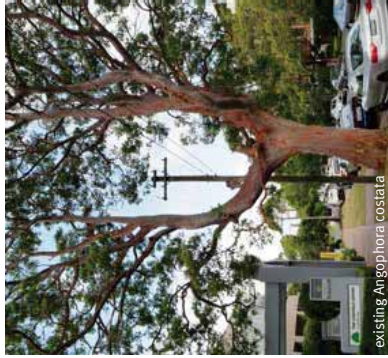
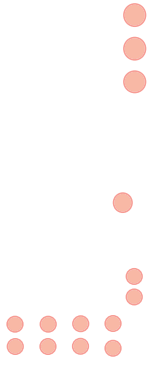


Melaleuca quinquenervia



Melaleuca quinquenervia

street



existing Angophora costata



Stenocarpus sinuatus



Stenocarpus sinuatus



Angophora costata

green



Jacaranda mimosifolia



Liriodendron tulipifera



Liriodendron tulipifera



Wisteria floribunda



Brachychiton acerifolius

project costing

Option 1 - Level 1 basement

Budget Project Cost	\$19,700,000
Estimated development cost	\$17,600,000 - 17,800,000
<hr/>	
Capacity for scope creep	\$ 1,900,000

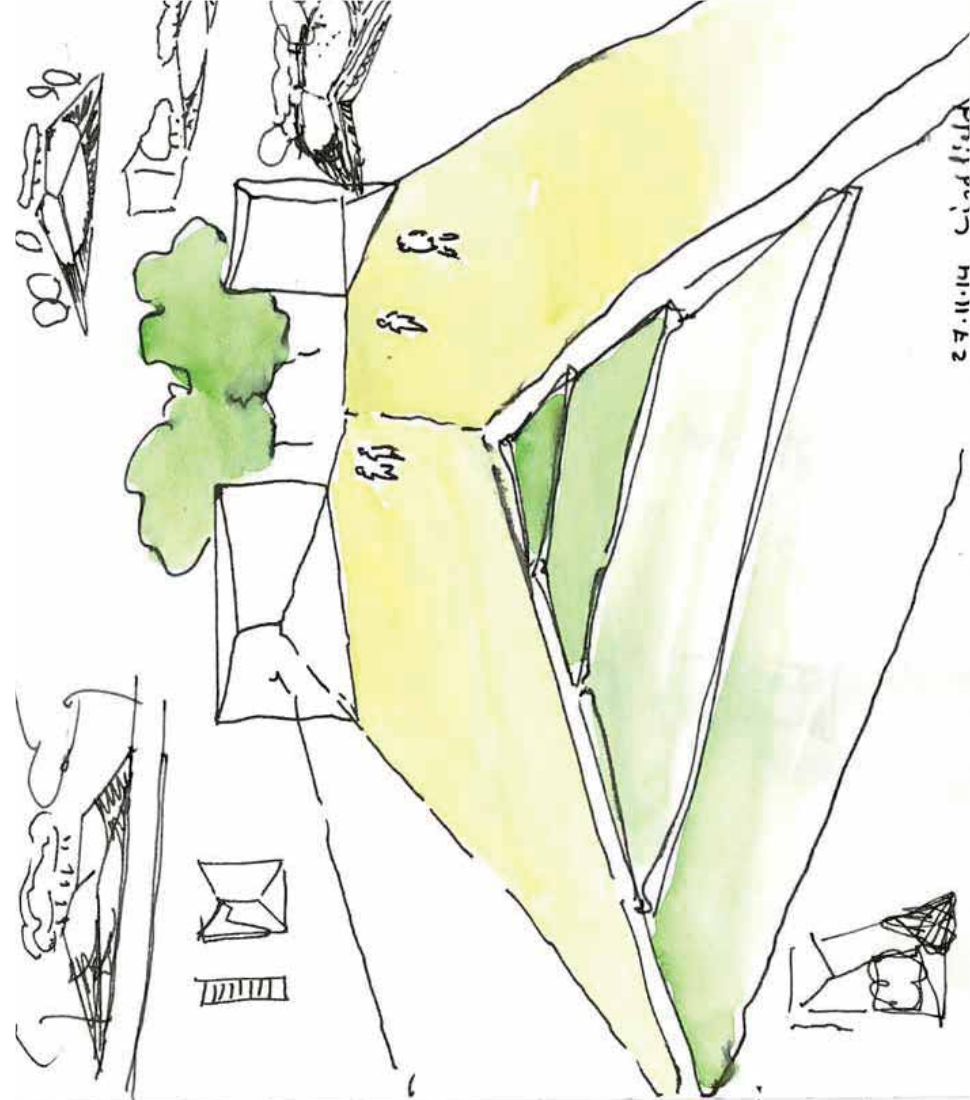
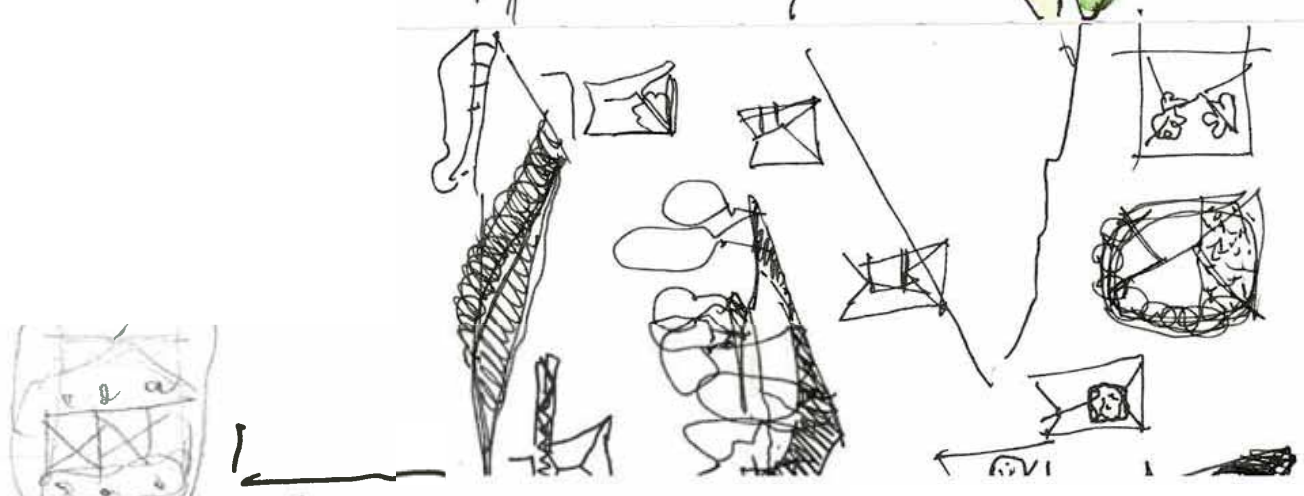
Option 2 - Level 2 basement

subject to funding

Budget Project Cost	\$26,700,000
Estimated development cost	\$23,000,000 - 23,850,000
<hr/>	
Capacity for scope creep	\$ 2,850,000

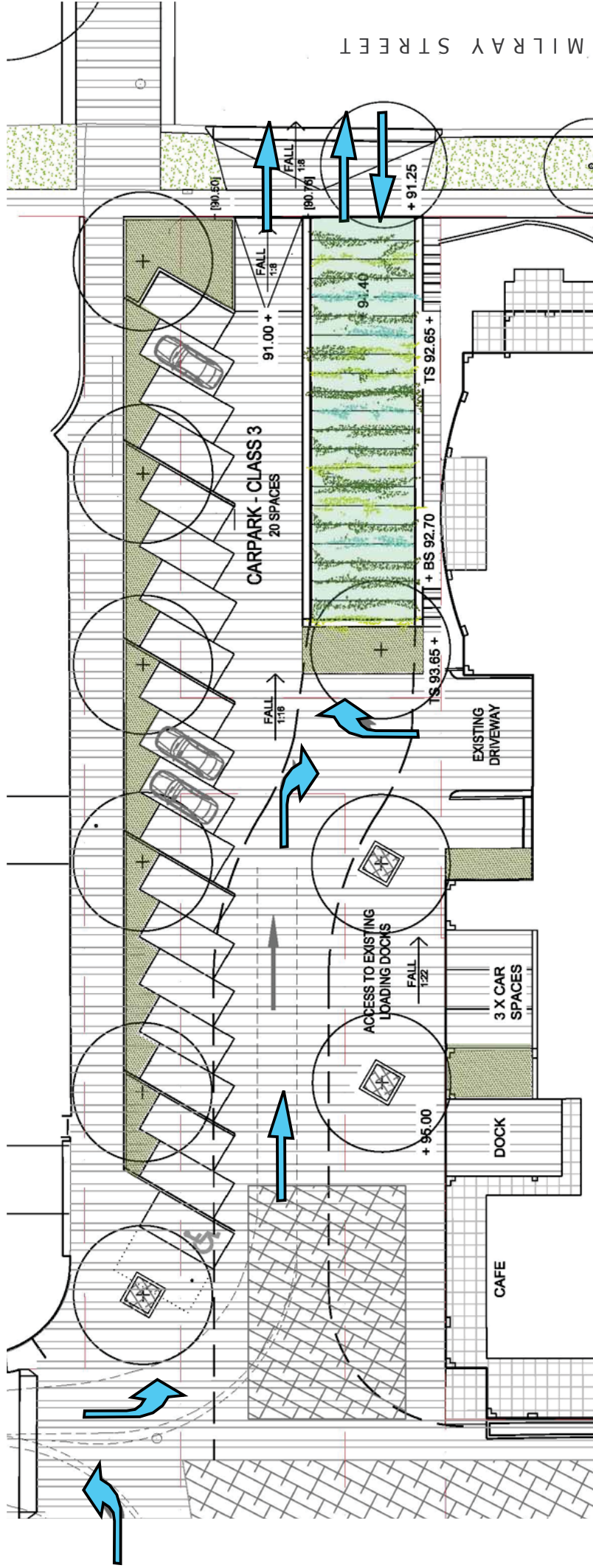


sketches



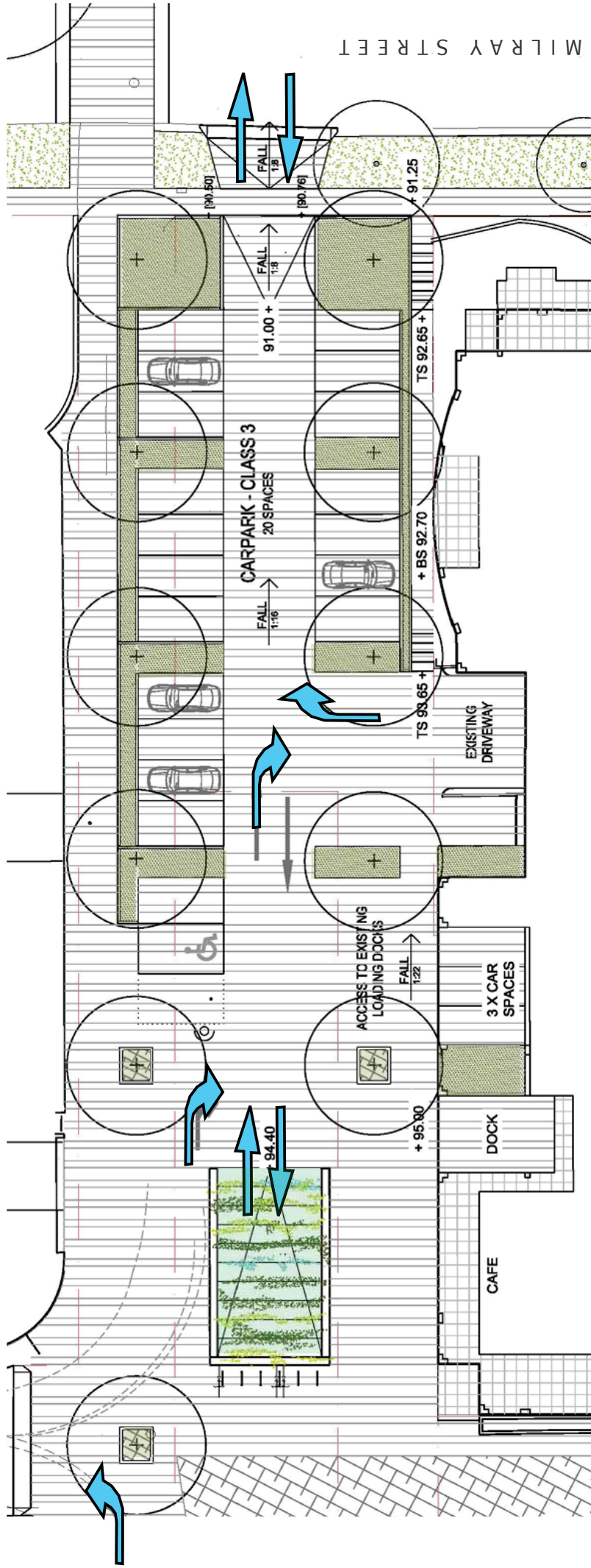
alternative car park entry

option b

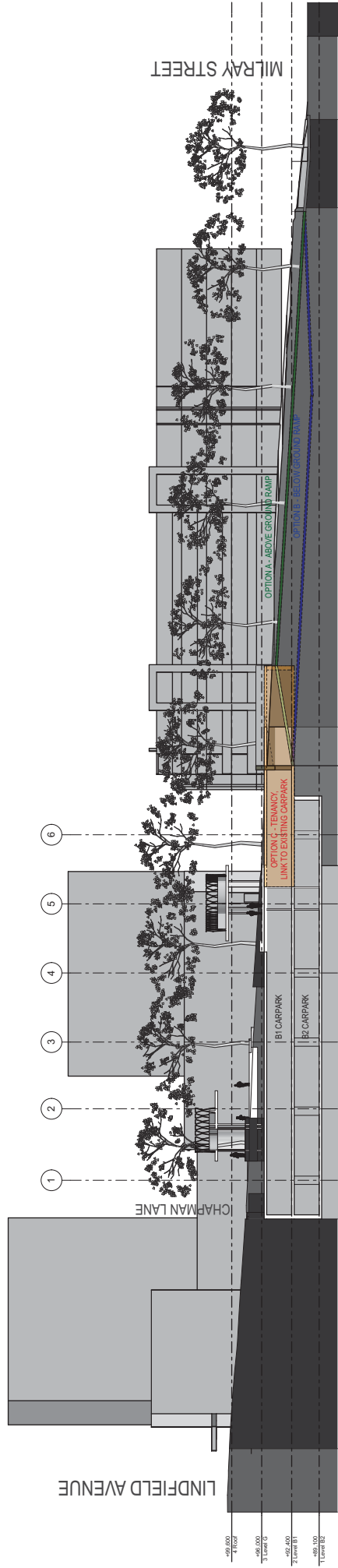


alternative car park entry

option c



car park entry section



the green sections

