

CONCEPT PLAN

Warrimoo Oval Playspace

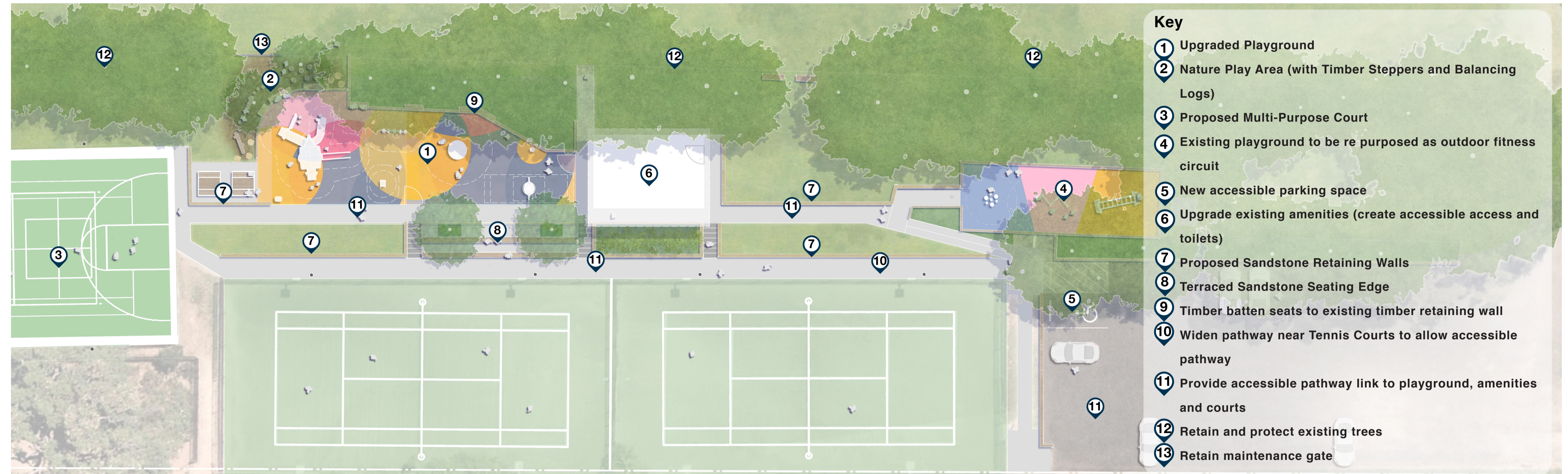


Context



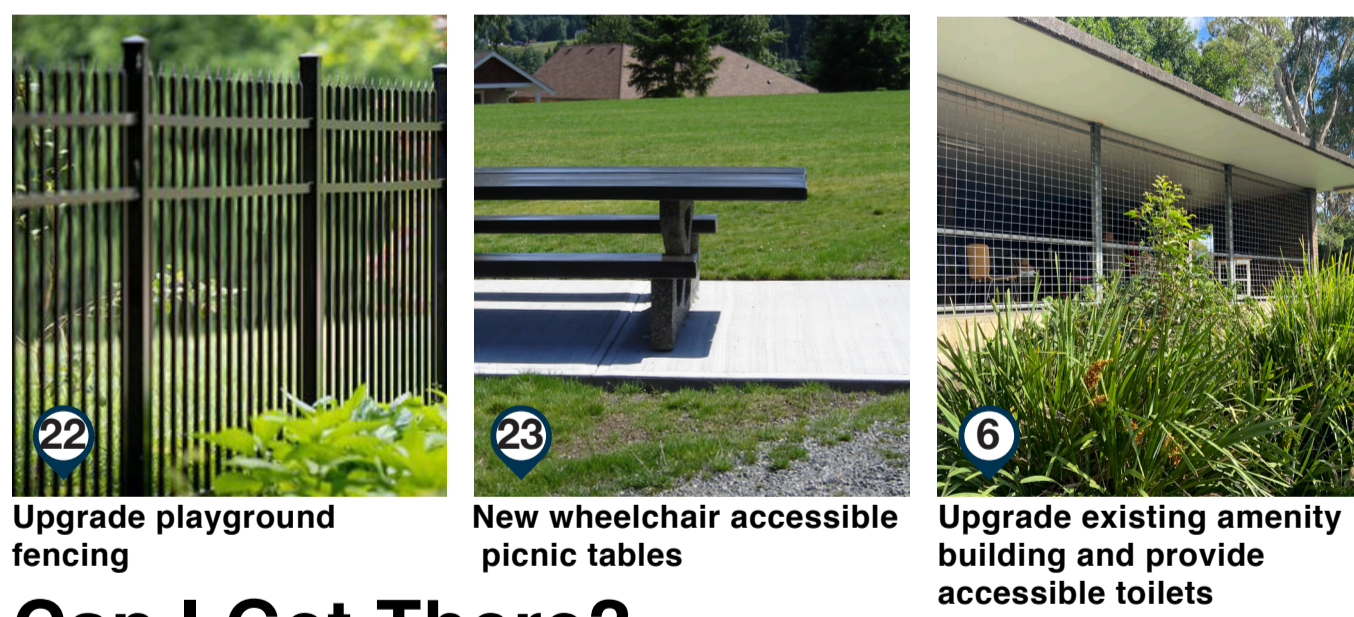
- Access off Warrimoo Avenue
 - Pedestrian Movement
 - Existing Playgrounds
 - Existing Tennis Courts
- 0m 30m 60m 90m 120m

Site Plan

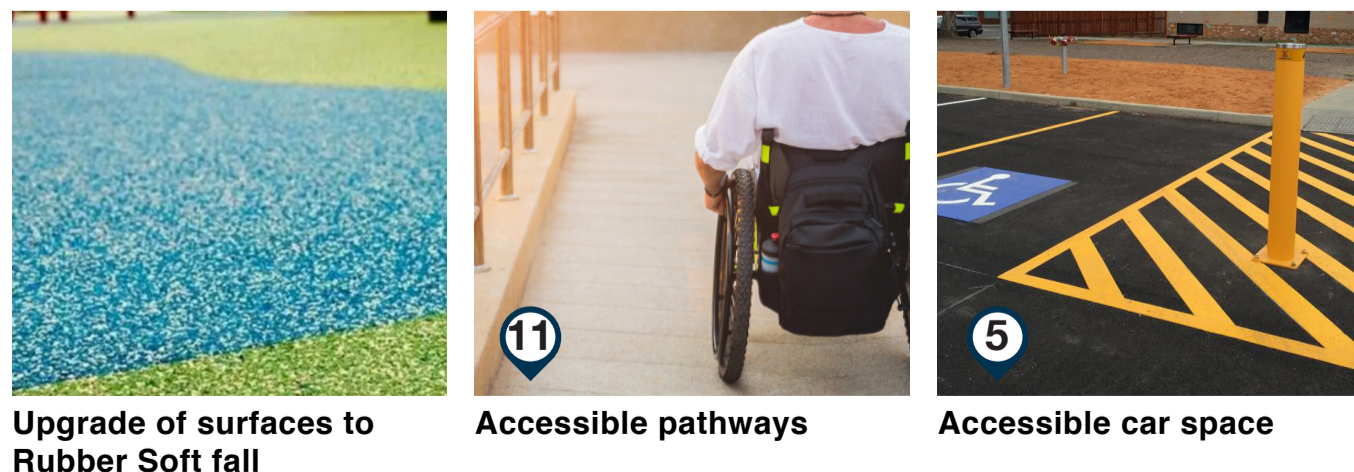


- Key**
- ① Upgraded Playground
 - ② Nature Play Area (with Timber Steppers and Balancing Logs)
 - ③ Proposed Multi-Purpose Court
 - ④ Existing playground to be re purposed as outdoor fitness circuit
 - ⑤ New accessible parking space
 - ⑥ Upgrade existing amenities (create accessible access and toilets)
 - ⑦ Proposed Sandstone Retaining Walls
 - ⑧ Terraced Sandstone Seating Edge
 - ⑨ Timber batten seats to existing timber retaining wall
 - ⑩ Widen pathway near Tennis Courts to allow accessible pathway
 - ⑪ Provide accessible pathway link to playground, amenities and courts
 - ⑫ Retain and protect existing trees
 - ⑬ Retain maintenance gate
- 0m 5m 10m

Can I Stay? Amenities, Furniture & Planting



Can I Get There? Access



Can I Play? Play & Fitness Equipment



Playground

