

**R** remove

Assist persons in Immediate Danger

**A** 000  
Fire, Police, Ambulance  
**alarm**

Alert occupants & raise an alarm. Ensure the Fire Brigade are notified - Dial 000

**C** contain

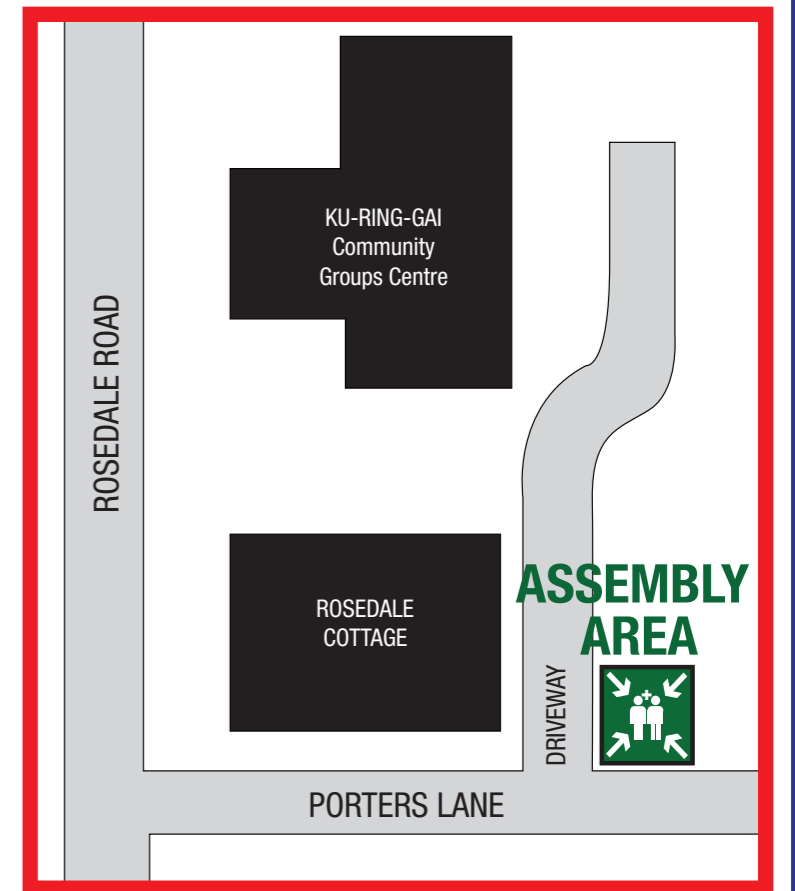
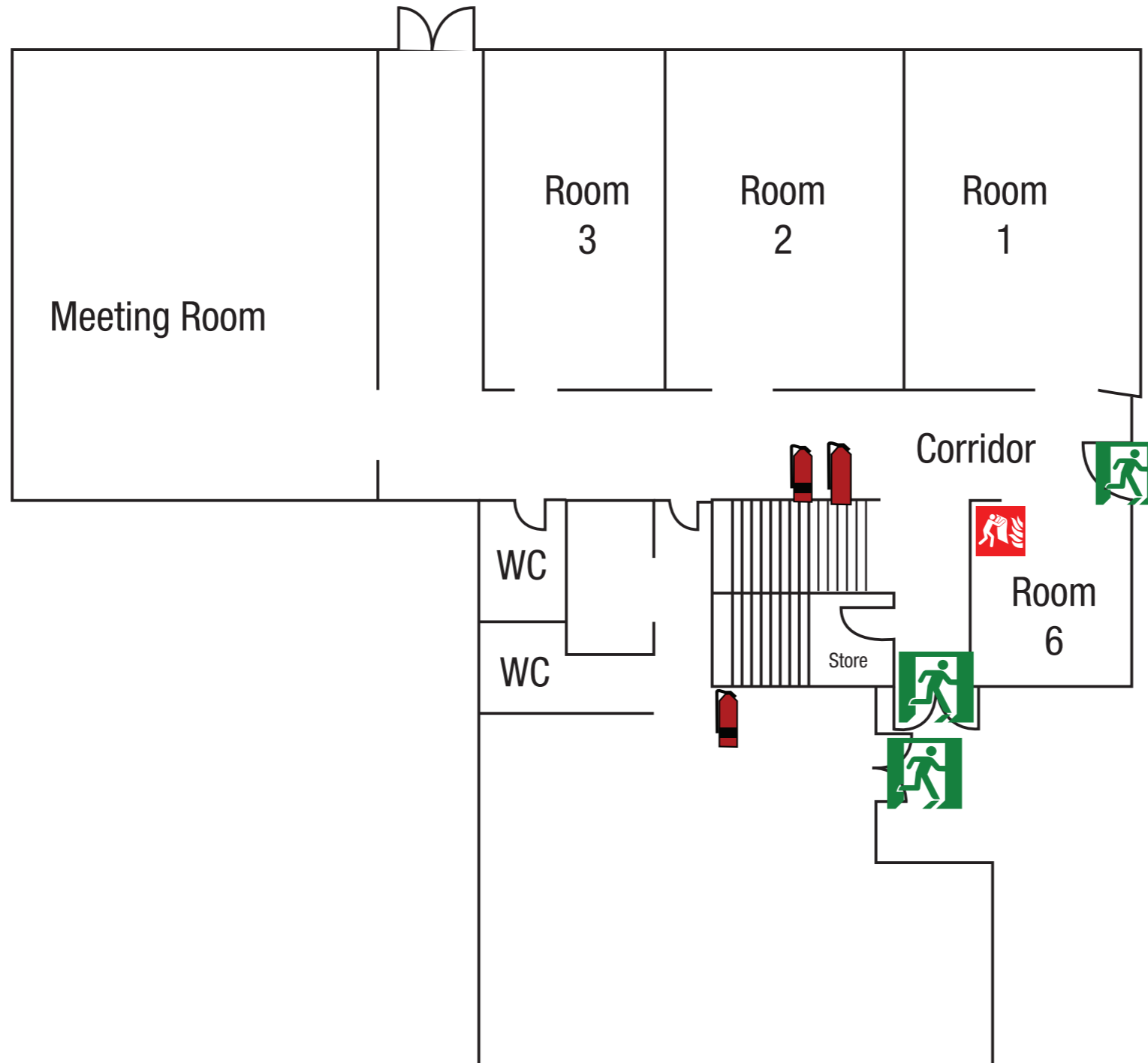
Contain the smoke and fire. Restrict the speed of fire. Attempt to extinguish the fire, if safe and trained to do so. Work in pairs.

**E** evacuate

Evacuate to a safe area. Evacuate the building via the nearest, safest exit route and wait for assistance from responding emergency services.

# EVACUATION DIAGRAM

Community Groups St Ives  
207 Mona Vale Road  
St Ives, 2075  
Ground Floor



## LEGEND

- Exit
- CO2 Fire Extinguisher
- Water Extinguisher
- Fire Blanket

Valid to June 2026 - N.D.T.S