



Tree Forum

26 March 2024



Agenda

Welcome from the Mayor

Introduction

Presentations

Questions and Answers

What can we do better?

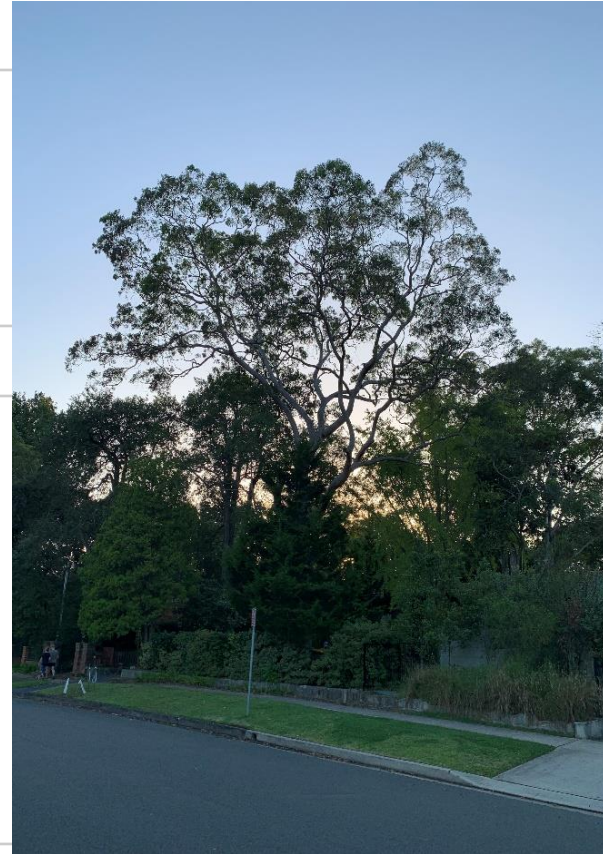
Tree protection and removal in DA & CDC processes

Exempt (Tree removal not requiring any approval)

- SEPP Exempt & Complying Development
- 10/50 Vegetation Clearing Scheme
- L&E Court order
- Weed Species

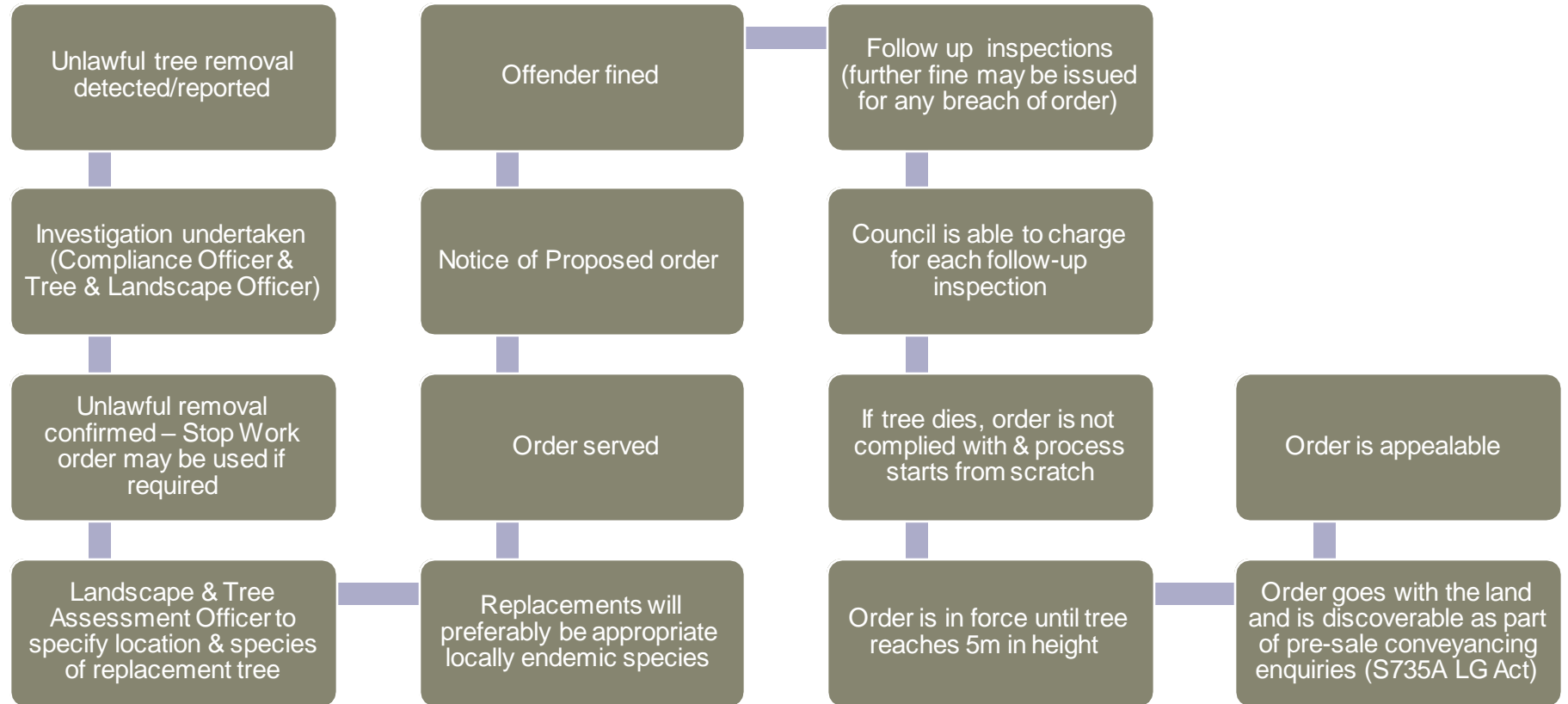
DA (Development & Regulation)

- Merit assessment (Federal & state legislation, SEPPs, LEP & DCP)
- Key controls are in Ku-ring-gai DCP
 - Assessment considerations - example
 - Retention, Protect, Maintain, Enhance
 - Replenishment
 - No net loss of biodiversity (Part 18.7)
 - Amended plans
 - Conditions of consent/Reasons for refusal
- Review on appeal in L&E Court



Tree Replacement Orders

- Introduced December 2023
- Uses Order provisions under EP&A Act to require replacement of illegally removed trees
- Places ongoing obligation on property owner to maintain tree to maturity
- PINS (fines) will continue to apply - \$3,000 for private individual / \$6,000 for company



A low-angle photograph of a dense forest. The sun is shining from the upper left, creating a bright starburst effect and illuminating the scene. The trees are tall and thin, with a complex network of branches and green leaves. The sky is a clear, bright blue. The overall atmosphere is bright and natural.

Tree management

Tree management

What do we do?

- Private tree applications and follow up enquiries
- Inspection and assessment Council trees
- Arboricultural impact assessment organised for Council projects
- Investigations associated with unauthorised tree works – not involving development applications or current CDCs (Compliance)
- Tree planting



Relevant controls

Management of the urban forest is guided by:

- Urban Forest Policy
- Urban Forest Strategy
- State Environmental Planning Policy (Biodiversity and Conservation)2021
 - Enabling provision for Council's Tree and vegetation DCP.
- Tree and Vegetation Development Control Plan
 - Requires application for tree removal outside the Development Application and Complying Development Process.
- Australia Standards
 - AS 4373-2007 Pruning of amenity tree, AS4970 – 2009 Protection of tree on development sites & AS 2303 -2015 Tree stock for landscape use.
- Council Tree Assessment Guidelines to Prune or Remove Trees on Private Property and council managed Land
- Tree Notification Policy
- Other legislation such as Biodiversity Conservation Act 2016 No 63, Electricity Supply Act 1995 No 94, Sydney Water Act 1994 No 88

Tree investigations

For the purposes of investigation, they can be divided into the following:

- Breach of development application consent conditions
- Breaches associated with complying development
- Breaches outside the planning environment

Investigative limitations

Some of the limitations faced by Council:

Burden of Proof - Beyond a Reasonable Doubt

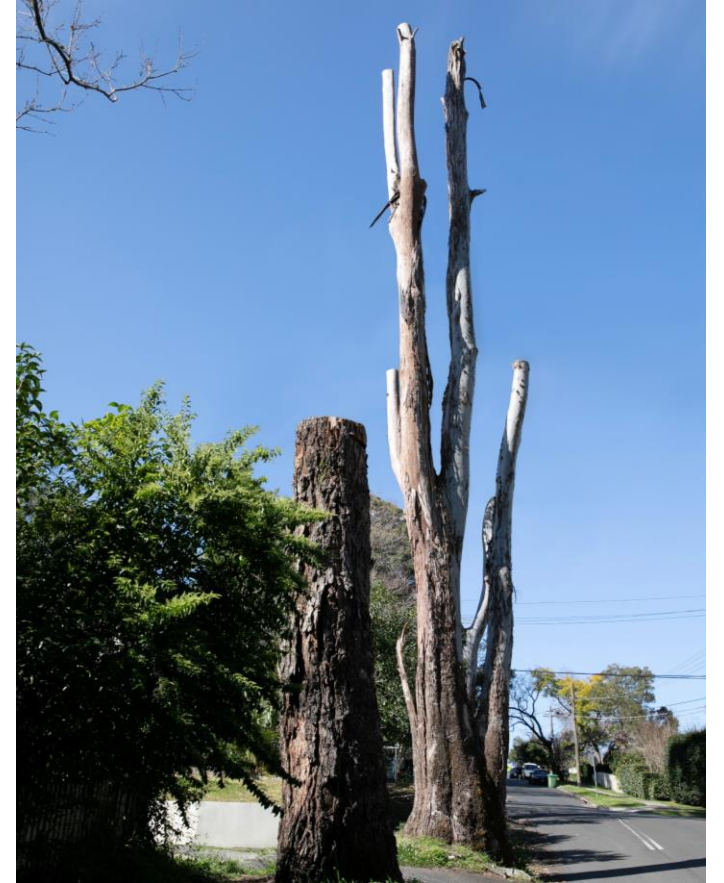
Evidence linking an offender to an offence

- Settlement related challenges
- The stealth associated with unauthorised tree works

Threats and challenges

Some of the biggest threats to our urban forest are from

- Unauthorised tree work
- Damage to trees particularly involving CDC that often lead to tree death or their removal
- Exemptions contained in certain legislation that allow people to legally remove healthy trees



Threats and challenges

10/50 Vegetation Clearing Code

- People utilise the exemption in the code to legally remove trees that are not a legitimate bushfire threat

Changes in the way unauthorised works take place

- There has been a shift from removal of live trees to poisoning them first. This approach means that its more challenging to catch people in the act.
- New owners poisoning trees between settlement.

Our response



Issuing penalty infringement notices (PINs)

- Despite the challenges, Council issued almost 100 PIN's in the 2022/23 financial year.

Land and Environment Court appeals

- Council does attend class 2 appeals to tree application determinations and typically Council tree application determinations are upheld. This highlights that our guidelines are reasonable and consistent with legal precedent.

Our response

Education

- Brochures are mailed to residents informing residents of the benefits of trees in our urban environment.
- Online video to educate the community on the importance of tree preservation.
- Building community awareness around unauthorised tree works using signage on bus stops.
- Educating tree contractors regarding the Tree and Vegetation Preservation DCP. Contact through peak bodies such as the Tree Contractors Association.



Our response



- Developed an online mapping tool for community members to cross-reference tree-related applications, aiding in identifying potential unauthorised work.
- Implemented a requirement to advertise tree permits at the front of properties when removing or pruning trees under the terms of the consent.

Our response

- Implementation of the Urban Forest Strategy
- Collaborating with the Department of Planning and Environment and five other councils to strengthen legislation regarding tree-related breaches.
- Lobbying the state government urging for a review of legislation to impose stricter penalties on both individuals and organisations involved in illegal tree-related actions.
- Increasing resources dedicated to compliance of unlawful tree-related activities.
- Dedicated hotline for reporting of illegal tree activities
- Working with other Council departments on response to proposed changes to state planning proposals TODS etc.



A monitor lizard with black and yellow stripes is climbing a tree trunk. The background is a blurred blue sky and green foliage.

Trees

The urban forest and education

- How does Council understand the urban forest?
- What is Council doing to support the urban forest?
- How is Council helping to educate the community?

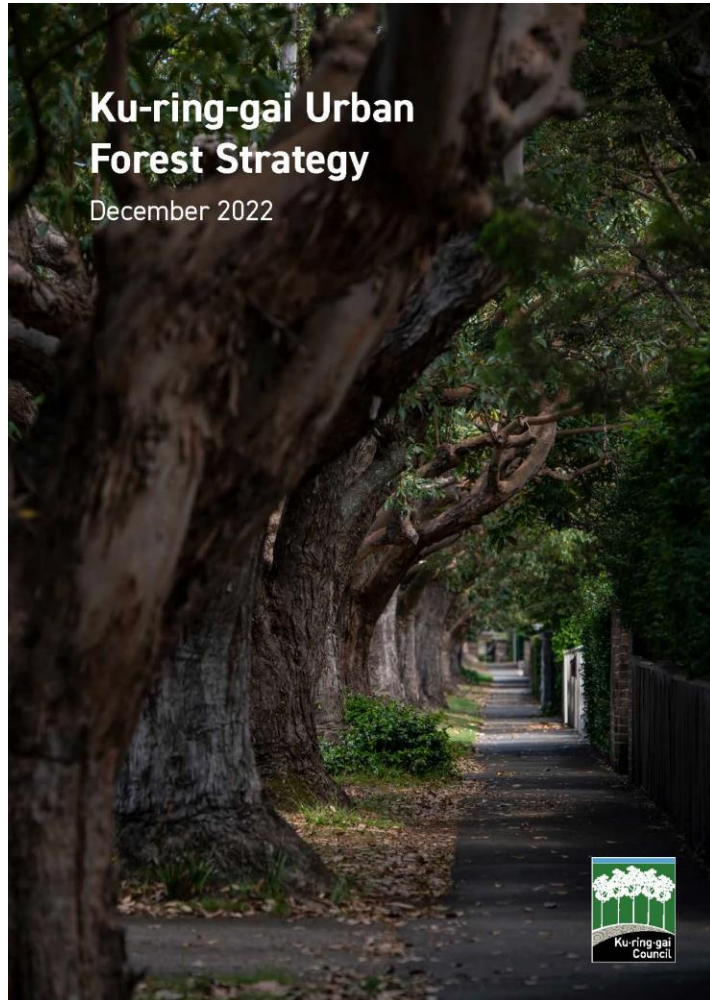
How does Council understand the urban forest?

Urban forest strategy

What we have – data & analysis

- Tree inventory
- Bi-annual data capture of canopy
- Trees on public land & trees on private land
- Available planting spaces

Urban Forest Strategy – monitoring, maintaining and enhancing urban canopy



Vision statement

To recognise that the Ku-ring-gai urban forest forms an important part of the cultural identity of Ku-ring-gai, where residents value trees and the natural landscape. Council will protect and enhance the urban forest to ensure this unique character and established canopy cover is preserved and improved for future generations.

Key Strategic Principles:



1. Retain & Protect

Key to increasing urban tree canopy is protecting what you have.



3. Monitor & Maintain

You need to know what you have to know how to manage it.



2. Expand & Integrate

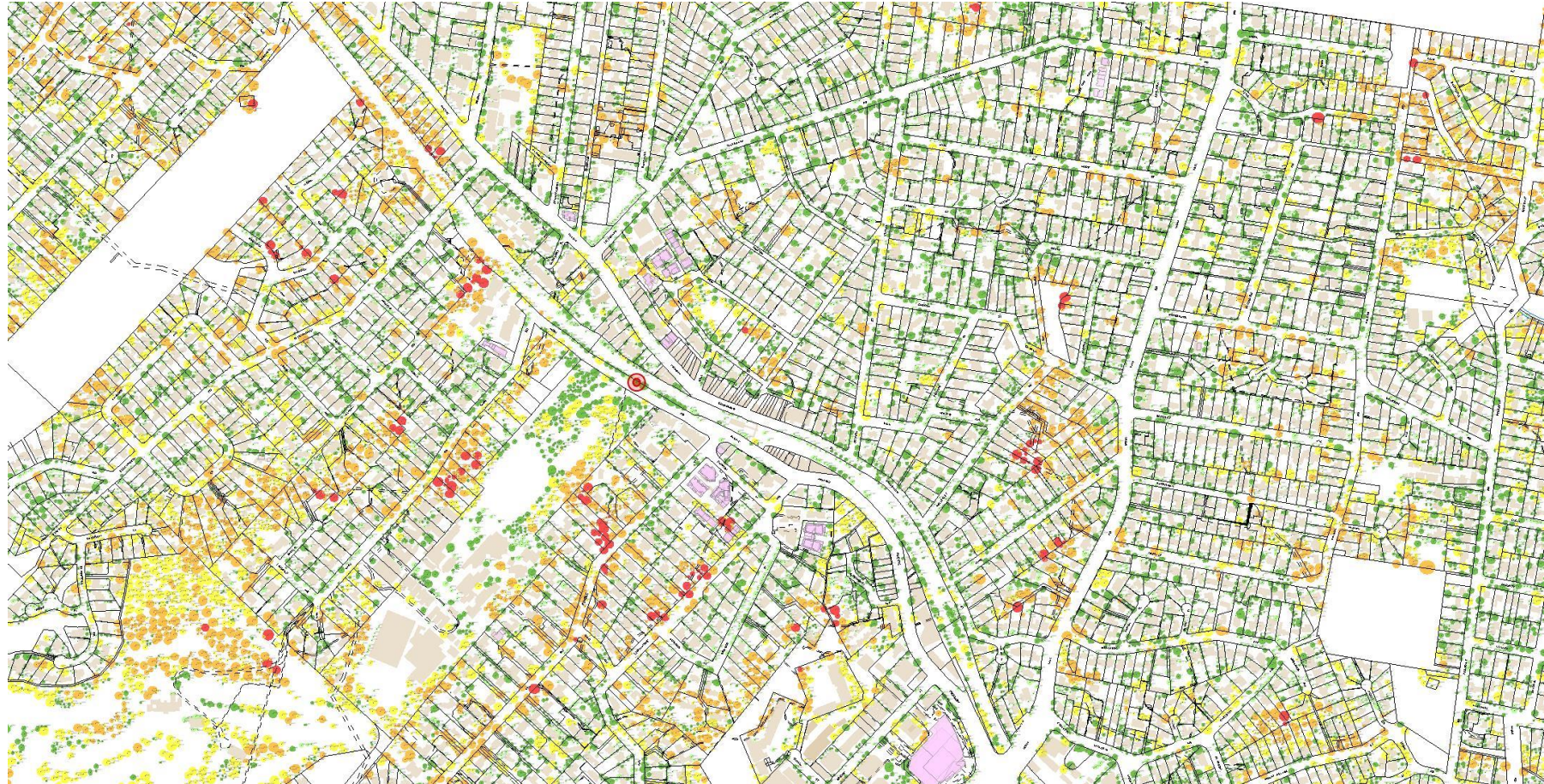
Expand tree planting programs and integrate capital programs to increase canopy on public land.



4. Collaborate & Incentivise

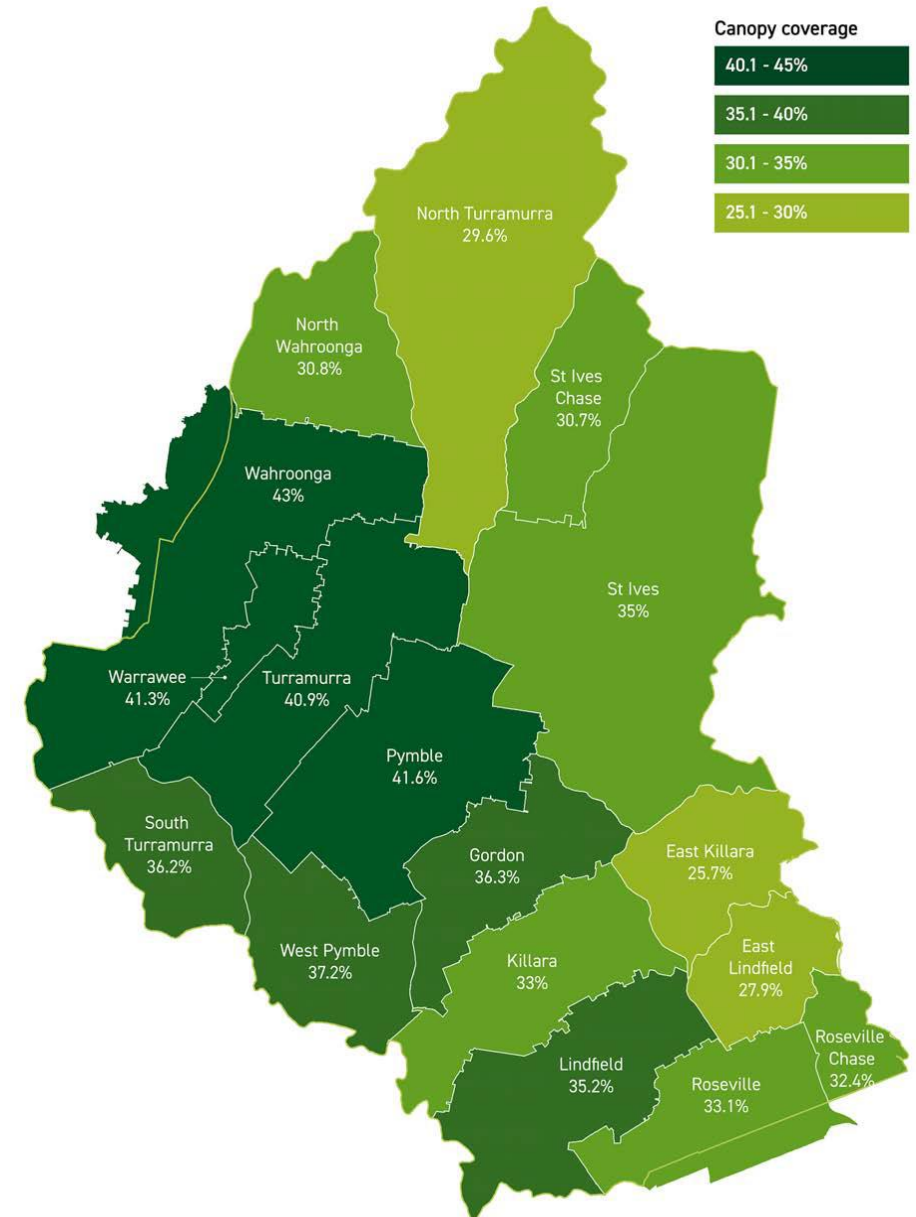
Raising awareness of the benefits of trees across the community will drive change.

Tree inventory

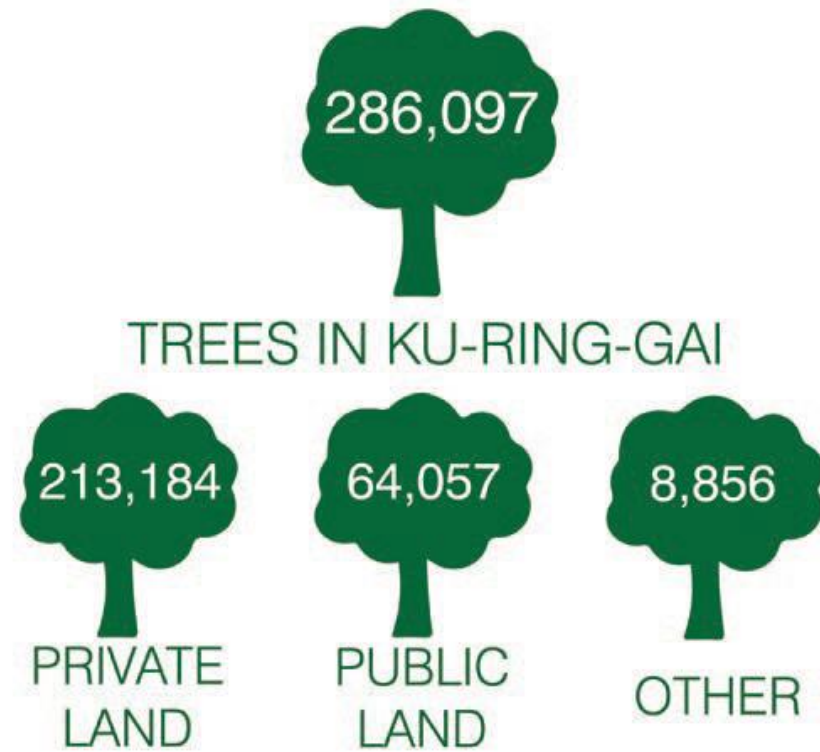
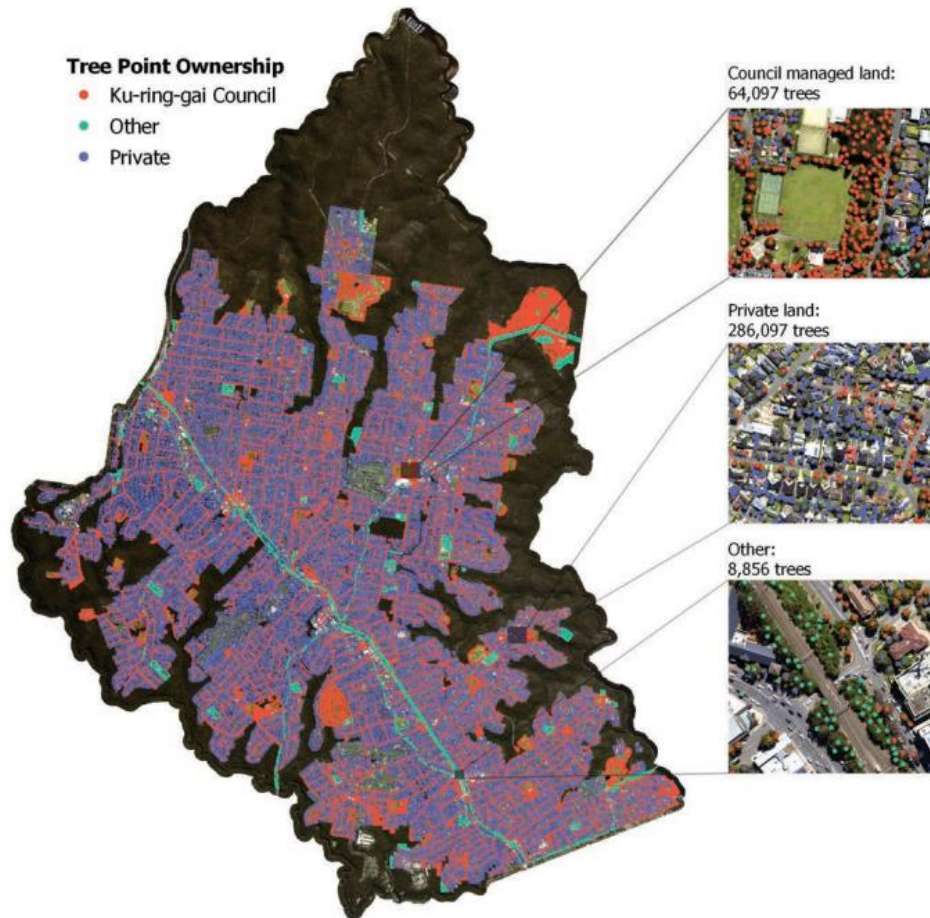


Bi-annual data capture of canopy

- In 2020, LGA wide canopy = 51.4%, urban area (excluding land zoned C1) = 45%.
- In 2022, LGA wide canopy = 50% urban area (excluding land zoned C1) = 43.6%
- Next Sydney wide acquisition scheduled for next summer 24/25.
- Likely to indicate continued downward trend.



Trees on public land & private land



What is Council doing to support the urban forest?

- Understanding the challenges
- Targets
- Action and implementation plan
- Bio-banking
- National Tree Day
- Community nursery
- Street tree pilot project
- Tiny forests
- Volunteer groups
- Net Zero

Understanding the challenges

What's working well

- Capable in-house tree management crews
- Adoption of the Urban Forest Policy
- Successful grant funding for tree planting
- Highly engaged and informed staff
- Good internal processes in place

What needs improvement

- Asset management approach to trees
- Proactive tree maintenance programs
- Tree planting programs
- Capital works integration
- Community engagement around trees
- Private tree controls

Challenges

Over mature urban forest

Social barriers

Planting programs

Tree maintenance programs

Development of private land

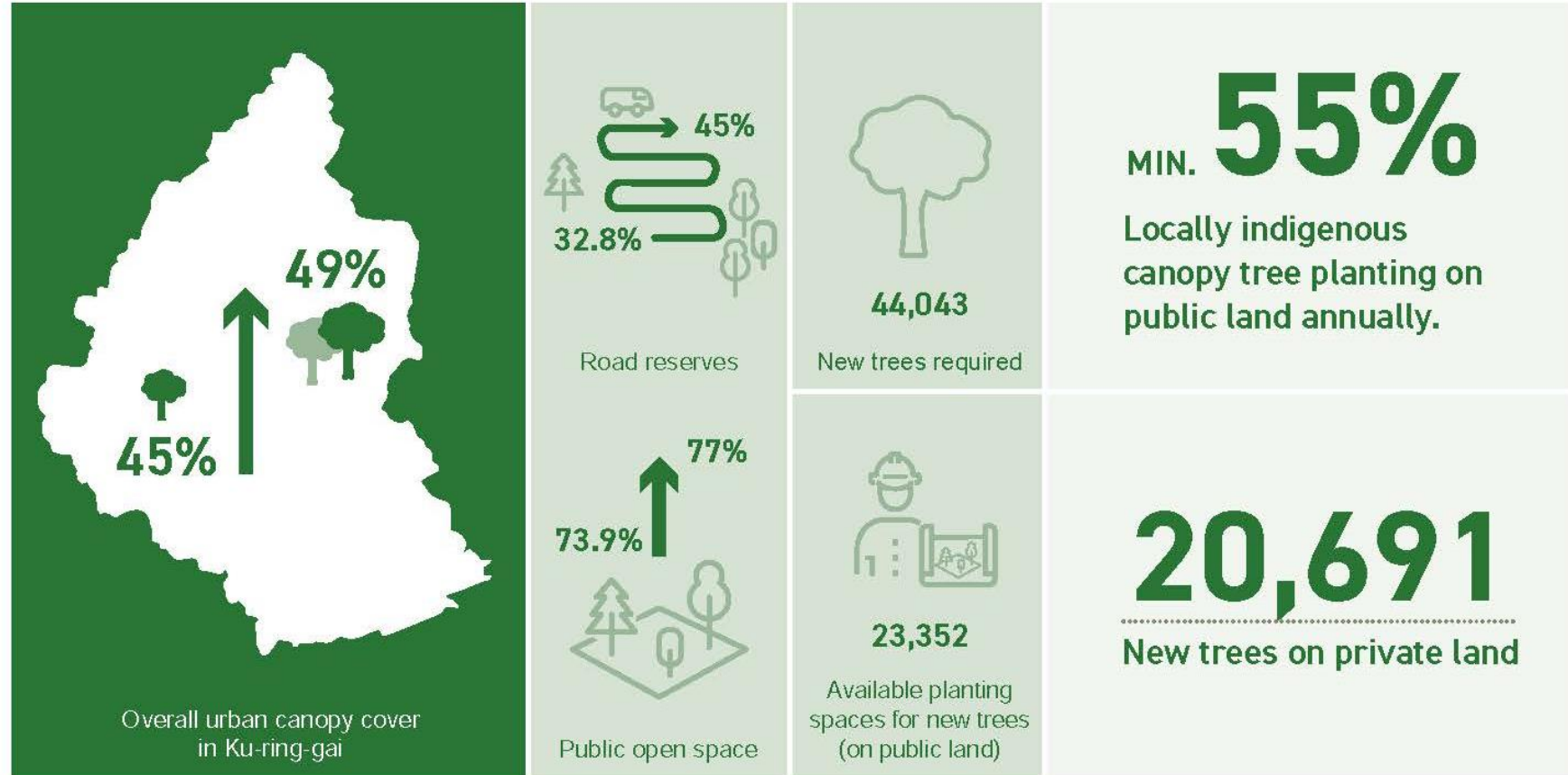
Asset management full life cycle

Physical constraints

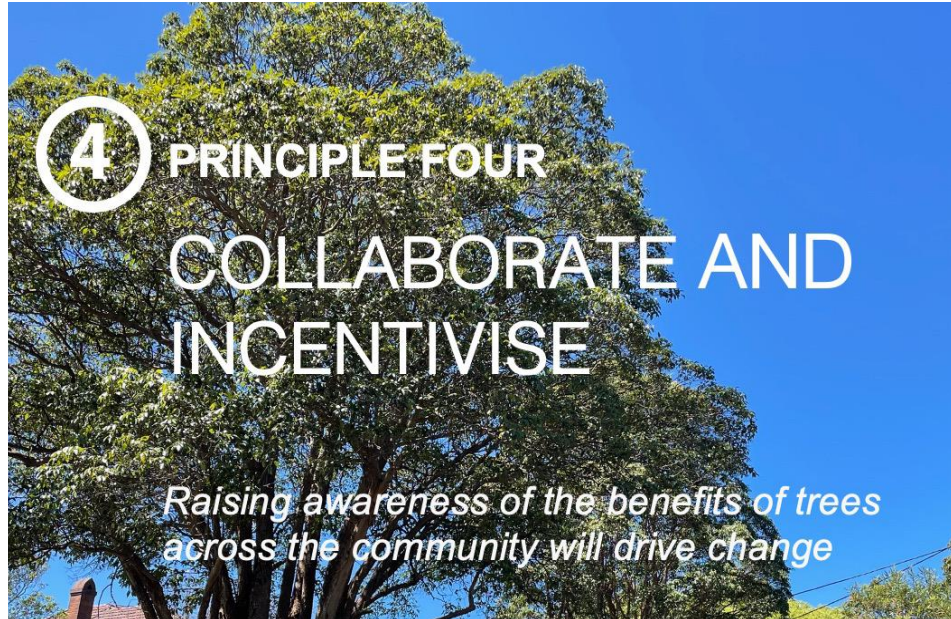
Integrated capital works

Targets

Key targets



Action and implementation plan

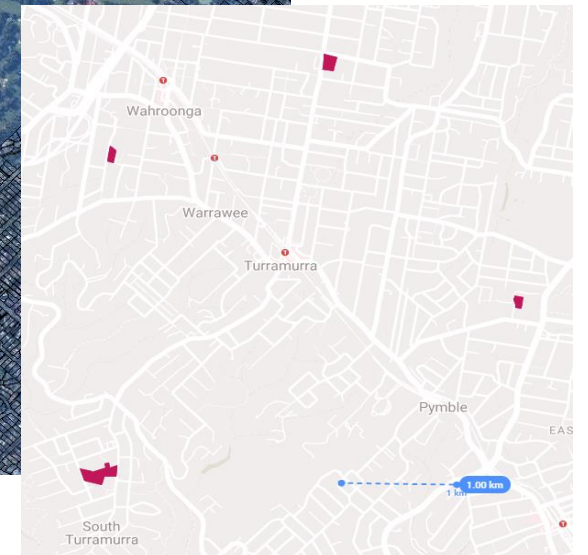
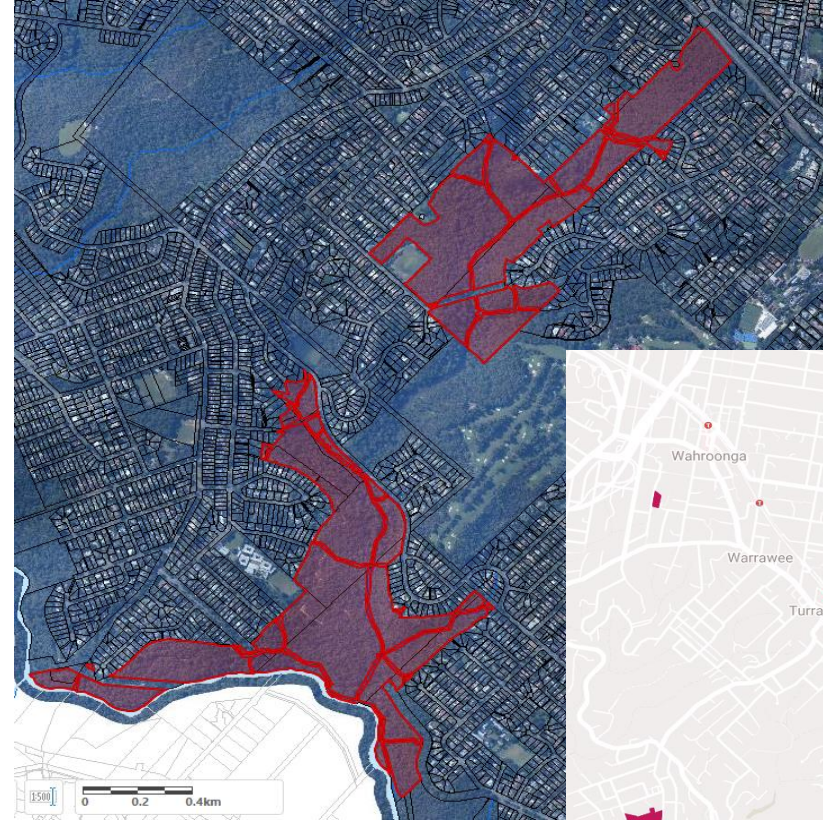


Goals

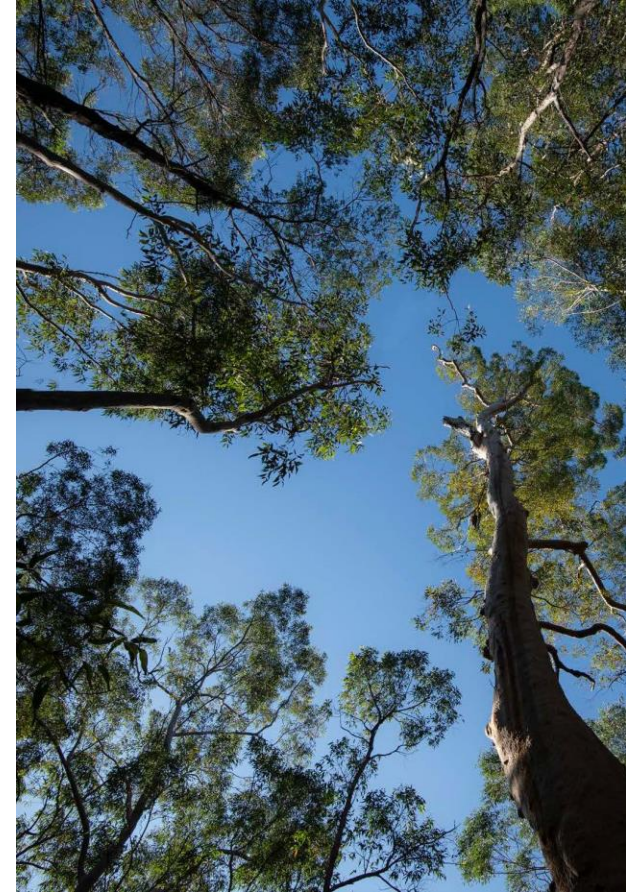
- 4.1 enable, support and empower the community to actively participate in the planning and management of trees
- 4.2 incentivise increased canopy on private land
- 4.3 advocate for greater recognition of green infrastructure

Bio-banking

- Ku-ring-gai Council has entered into two Biodiversity Stewardship Agreements to enhance and conserve at-threat biodiversity in perpetuity.
- Council receives funding from the Biodiversity Conservation Trust to undertake works for 20 years to protect and restore biodiversity.
- BSA 132 includes Sheldon Forest, Rofe Park, and Comenarra Creek Reserve (99 ha)
- BSA 489 includes Clive Evatt Reserve, The Glade Reserve, Blackbutt Park and Sir David Martin Reserve (6 ha)



National Tree Day



Community nursery



Community nursery

- Greenstyle Gardens/Verge Gardens/Bushcare = 640
- Citizenship = 1000
- National Tree Day = 628
- Giveaways (Sustainability Fair, Vol's lunch etc.) = 400
- Woody meadow = 352

Threatened species conservation hub

- *Hibbertia spanantha*
- *Haloragodendron lucasii*

Street tree pilot project

- Round 1 community engagement – mail out and survey to 500 residents. 170 responses
- 42 locations identified following desktop analysis, ground truthing, services locating and resident feedback. Streets include:
 - Shirley Avenue
 - Bromborough Road
 - The Grove
 - Roseville Avenue
 - Lord Street
 - Bancroft Avenue
- 45L tree stock ordered for April planting
- Round 2 community engagement - mail out + planning for community events, workshop and give-aways (April/May)

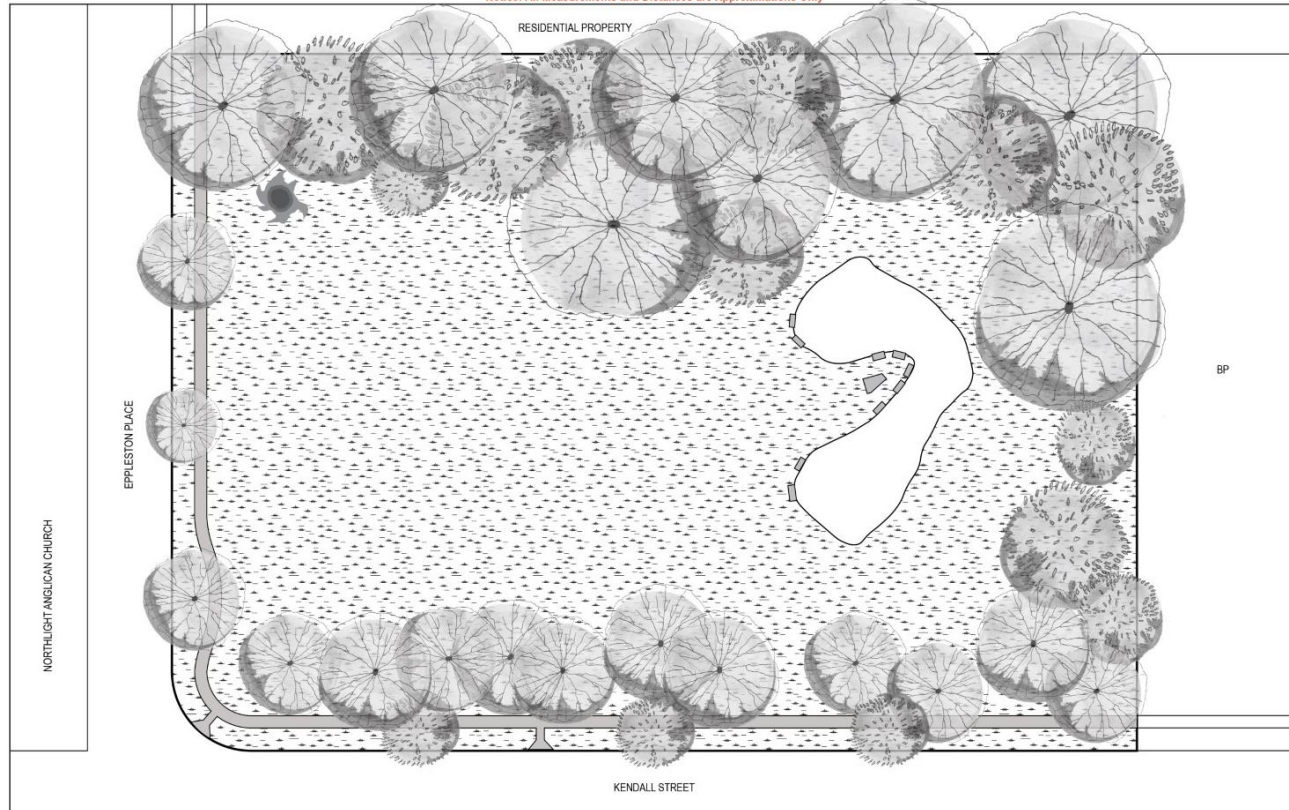


Tiny forests

Scale 1:300

KU-RING-GAI TINY FOREST

Notice: All Measurements and Distances are Approximations Only



Earthwatch Tiny Forest Site
Ku-Ring-Gai, Sydney

Prepared by MidBilton, N
2024



Volunteer groups

- BushCare
- StreetCare
- ParkCare
- TrailCare
- Community gardens
- Propagation



How is Council helping to educate the community?

- Tree tags
- Schools
- Communications & engagement

1

Tree Trail

Ku-ring-gai Tree Trail

Tree canopy covers over 30 per cent of Ku-ring-gai. While trees look beautiful, they also help to cool our homes and suburbs.

They provide food and habitat for wildlife, reduce pollution and improve the air we breathe by giving us oxygen and removing the carbon we produce.

Which tree am I?
Common name: Turpentine tree
Syncarpia glomulifera

How do I help our environment?

- I produce the equivalent amount of oxygen each year as 262 people breathe each day
- I absorb the same amount of carbon each year as an average car produces travelling 1.7km
- I provide an annual cooling effect equivalent to 292 days running an air conditioner

Special facts!

- I am part of a Critically Endangered Ecological Community known as the Sydney Turpentine-Ironbark Forest (STIF). Only 0.5% of the original forest remains.
- Things that can harm me include land clearing, soil pollution, weeds, rubbish dumping, and other human activities.

QR Code Explore the online map to find all of the 13 special trees along the trail.

Tree tag project

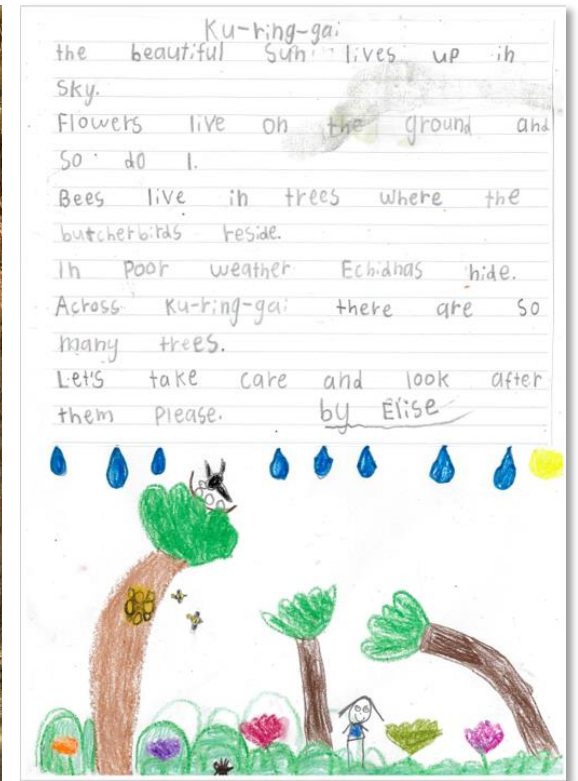
- Developed to help educate our community on the multiple benefits of trees
- Carefully selected trees are measured and data input to provide quantitative benefit measures: E.g. *“I produce enough oxygen each year as 262 people breathe each day”*
- Signs for the first tree trail will be installed this year
- Signs will link to a website with detailed information
- An accompanying learning sequence has been developed that links to the Stage 2: Year 3 & 4 Geography Syllabus



Smart Schools

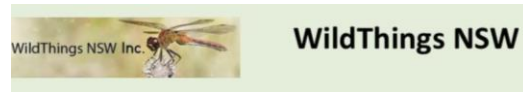
Our programs with trees include:

- The Nest Box program for early learning and primary schools. This raises awareness of urban habitat and native animals that benefit from our protection.
- Wild With Words Poetry Competition for students in Year 1- Year 6 to write about their local natural environment.
- Speaking 4 the Planet competition for high schools. The 2024 theme is 'Trees: Guardians for Life'.
- Schools Tree Day - planting opportunities for schools with BushCare volunteers.
- Tree Trail educational module has been designed for Year 3 & 4 students, encouraging appreciation for trees.
- We also run information webinars and workshops for teachers about our sustainability programs for schools.



Communications & engagement

- Our urban forest webpage
- Presentations at interest group forums



Home / Environment / Your local environment / Trees / **Our urban forest**

LOVING LIVING KU-RING-GAI Environment
Sustaining Sydney's green heart

Menu

In this section

- Your local environment
- Trees
- Trees on your property
- Trees on Council land
- Trees on neighbouring properties
- Reporting illegal tree removal, pruning or damage
- Bushfire protection rules for trees

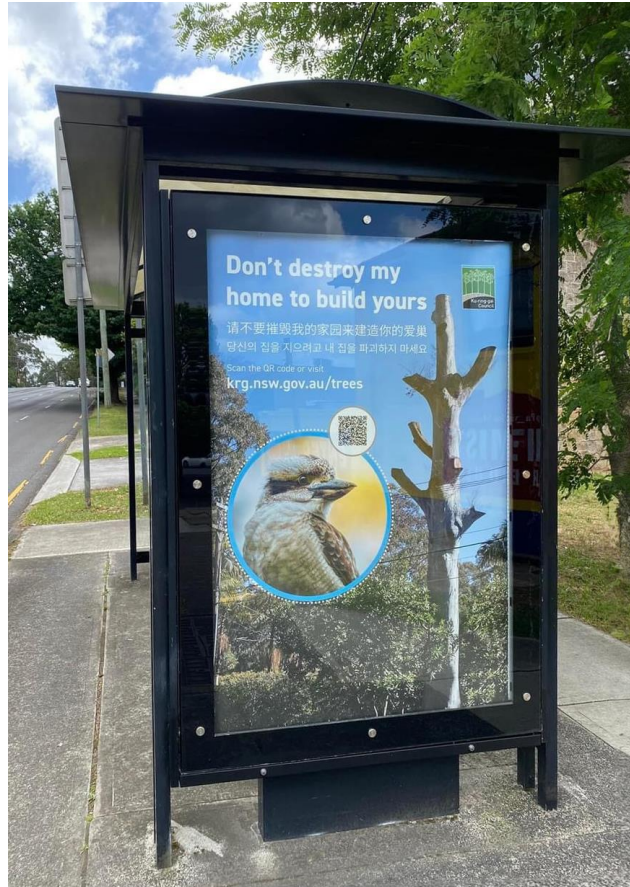
Our urban forest

Ku-ring-gai's urban forests create a healthy, liveable community. These include our trees, plants, soil and waterways as well as natural and built plant and tree systems.

What does an Urban Forest do?

- Reduces urban heat and energy consumption.
- Reduces air pollution.

Communications



Simplified Chinese	Traditional Chinese	Korean	
<p>Trees and your property</p> <p>Ku-ring-gai is often called Sydney's green heart because of its trees. They are a big part of the Ku-ring-gai that we know and love.</p> <p>Trees remove carbon dioxide, cool down our houses and are home to many birds and animals.</p> <p>Trees need maintaining and sometimes get sick, and this is when we may need to remove or prune them. But before you remove or prune a tree on your property, you need to check with us to see whether you need a permit or development consent.</p> <p>For a small fee Council staff can come to your house, check your trees and provide you with a permit for any work needed. They can give you expert help to ensure you follow the right course of action.</p> <p>Please be aware that removing trees from your property illegally can result in fines or court action.</p> <p>Check our website at krg.nsw.gov.au/trees for advice and answers to your questions. You can also talk to our customer service staff between 9.30am and 5pm weekdays on 8424 0000 or online at krg.nsw.gov.au</p>	<p>树木与您的地产</p> <p>因为树木众多，库林盖(Ku-ring-gai)通常被称为悉尼的绿色心脏。树木是我们所了解和喜爱的库林盖的重要组成部分。</p> <p>树木可以清除二氧化碳，为我们的房屋降温，也是许多鸟类和动物的家园。</p> <p>树木需要维护，有时可能会生病，这时我们可能需要移除或修剪它们。但在您移除或修剪您地產上的树木之前，您需要先与我们沟通，了解您是否需要许可证或发展许可。</p> <p>只需支付少许费用，我们的工作人员就可以到您家检查您的树木，并为您的树木提供任何所需的工作许可。他们可以为您提供专家帮助，确保您按照正确的程序进行。</p> <p>请注意，非法砍伐地產上的树木可能会导致罚款或法庭传票。</p> <p>请访问我们的网站 krg.nsw.gov.au/trees 获取建议和解答您的问题。您也可以在工作日 上午 9:30 至下午 5:00 致电我们的客户服务热线 8424 0000 或在线访问 krg.nsw.gov.au。</p>	<p>樹木和您的物業</p> <p>有賴於區內的林木，Ku-ring-gai 往往被稱為悉尼的綠色心臟。樹木是我們認識和喜愛的 Ku-ring-gai 不可或缺的一環。</p> <p>樹木可以清除二氧化碳，為我們的房屋降溫，也是許多鳥類和動物的家園。</p> <p>樹木需要保養，有時可能會生病，這時我們可能需要移除或修剪它們。但在您移除或修剪您地產上的樹木之前，您需要先與我們溝通，了解您是否需要許可證或發展許可。</p> <p>只需支付少許費用，我們的員工就可以到您家檢查您的樹木，並為您的樹木提供任何所需的工作許可。他們可以為您提供專家幫助，確保您按照正確的步驟進行。</p> <p>請注意，在您的物業範圍內非法砍伐樹木，可能會導致罰款或法庭傳票。</p> <p>如果您有任何問題，請訪問我們的網站 krg.nsw.gov.au/trees 獲取建議和解答您的問題。您也可以在工作日 上午 9:30 至下午 5:00 致電我們的客戶服務熱線 8424 0000 或線上訪問 krg.nsw.gov.au 聯絡我們。</p>	<p>나무와 여러분의 부동산</p> <p>쿠링가이(Ku-ring-gai)는 나무가 많아 종종 시드니의 푸른 심장이라 불립니다. 나무는 우리가 알고 좋아하는 쿠링가이의 일부이기도 합니다.</p> <p>나무는 이산화탄소를 제거하고 집을 시원하게 하며, 많은 새와 동물에게 집이 됩니다.</p> <p>나무는 돌보는 것이 필요합니다. 때때로 나무가 아프거나 죽을 때가 있는데, 이럴 때는 제거하거나 가지치기를 해야 합니다. 하지만 나무를 제거하거나 가지치기하기 전에, 우리는 먼저 우리가 필요로 하는 허가 또는 동의가 있는지 확인해야 합니다.</p> <p>작은 금액으로 전문가가 집에 와서 나무를 점검하고, 나무를 제거하거나 가지치기할 때 필요한 모든 작업을 도와줍니다.</p> <p>주의: 불법적으로 나무를 제거하면 벌금과 영구적인 기록이 있을 수 있습니다.</p> <p>문의: krg.nsw.gov.au/trees 를 방문하여 질문을 받거나, 전화로 8424 0000로 또는 온라인으로 krg.nsw.gov.au 사이트에서 9:30am부터 5pm까지 weekdays에 문의하십시오.</p>