

R remove

Assist persons in Immediate Danger

A 000
Fire, Police, Ambulance
alarm

Alert occupants & raise an alarm. Ensure the Fire Brigade are notified - Dial 000

C contain

Contain the smoke and fire. Restrict the speed of fire. Attempt to extinguish the fire, if safe and trained to do so.

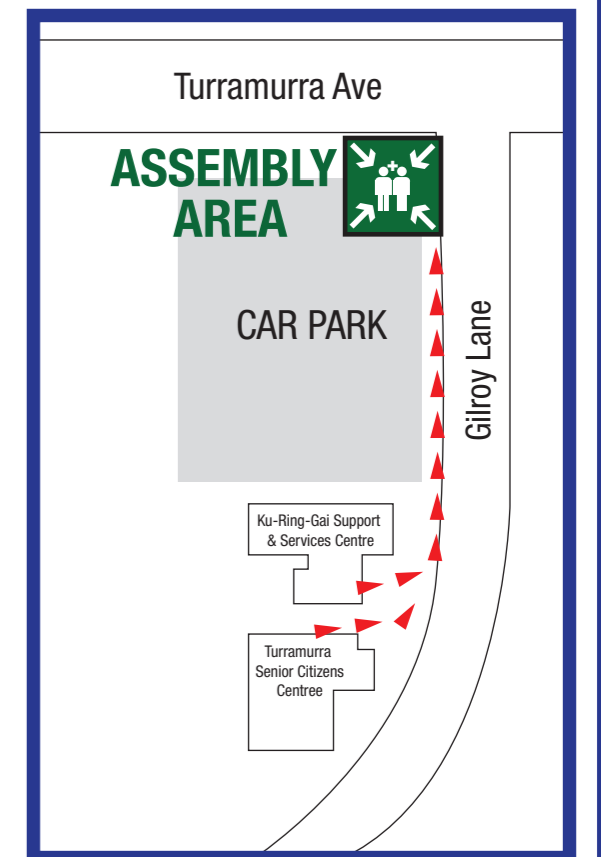
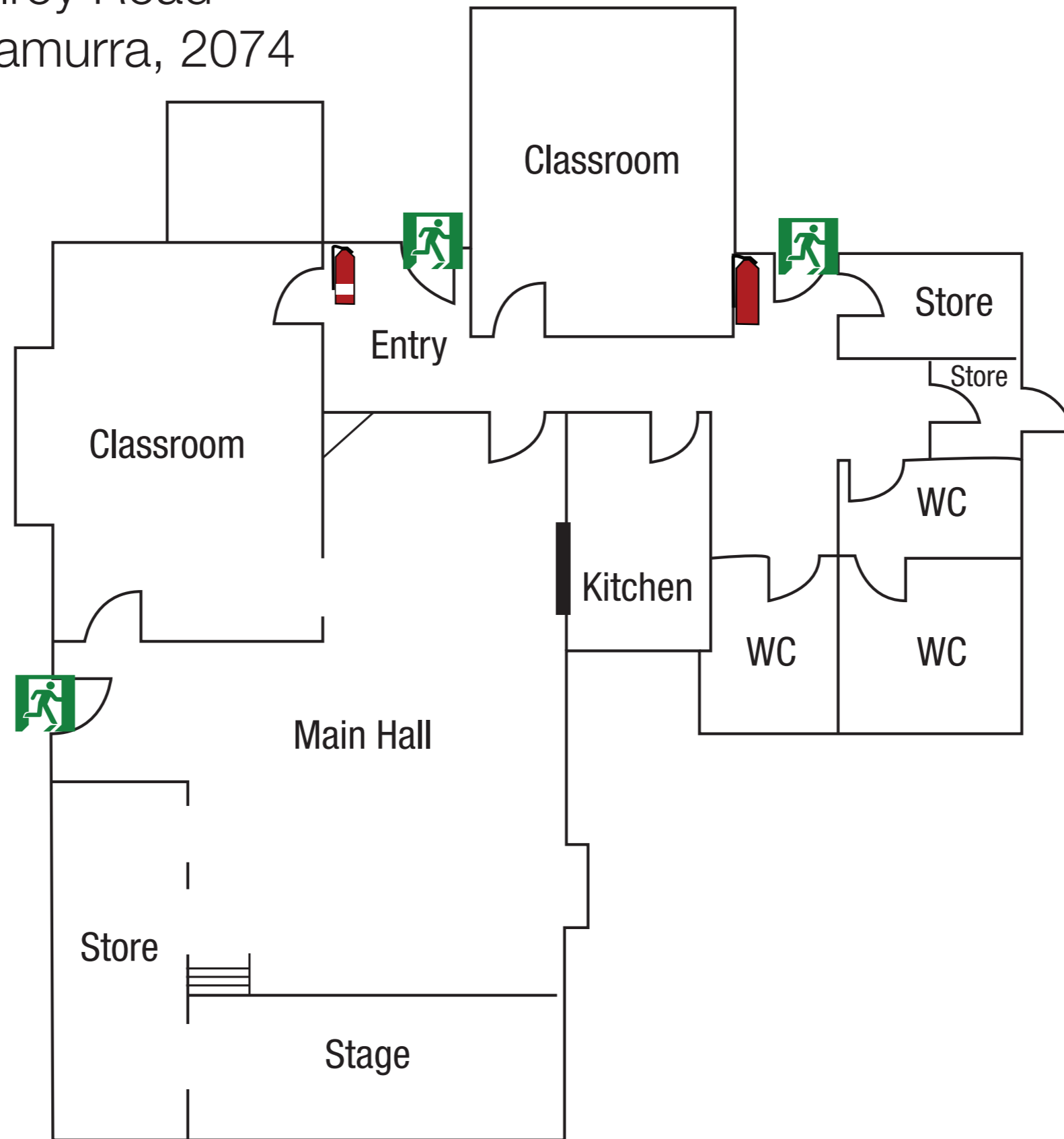
Work in pairs.

E evacuate




Evacuate to a safe area. Evacuate the building via the nearest, safest exit route and wait for assistance from responding emergency services.

EVACUATION DIAGRAM

Turrumurra Community Hall
1 Gilroy Road
Turrumurra, 2074



LEGEND

-  Exit
-  Dry Chemical Extinguisher
-  Water Extinguisher

Valid to June 2026 - N.D.T.S