

# BUSHLAND PRIORITISATION MATRIX

## JULY 2021-JUNE 2023

Reserve

30 40 15 85

Significance	/ 30
Resilience	/ 50
Threats	/ 20
<b>Total Score</b>	<b>/ 100</b>



Please Note: This map only includes the top 35 ranking sites in the LGA which have been prioritised for funding. For more information on assessment process, see Bushland Prioritisation matrix assessment methodology

[krq.nsw.gov.au/bushlandplans](http://krq.nsw.gov.au/bushlandplans)

Lovers Jump Creek Reserve



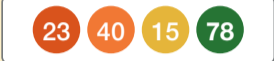
Clive Evatt Reserve



Turiban Reserve North



Blackbutt Park



Sheldon Forest



The Glade Reserve



Lower Campbell Reserve



Twin Creeks Reserve



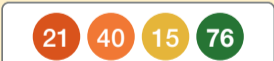
Browns End



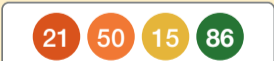
Bradley Park



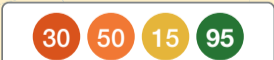
Sir David Martin Reserve



Rofe Park



Comenarra Creek Reserve



Golfers Glen Reserve



Bicentennial Park Bushland



Blackbutt Reserve



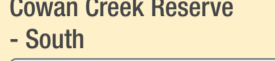
Princes Park - Bushland



Cowan Creek Reserve - North



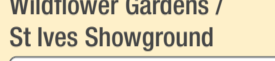
Cowan Creek Reserve - South



Ku-ring-gai Wildflower Gardens



Ku-ring-gai Wildflower Gardens / St Ives Showground



Ku-ring-gai Creek Reserve



Browns Forest



Douglas Street Reserve



Shinfields End



Dingly Dell



Surgeon White Reserve



Huntleys Forest



Richmond Park



Governor Phillip Reserve



Old She Oak Reserve



Moore's Creek Reserve



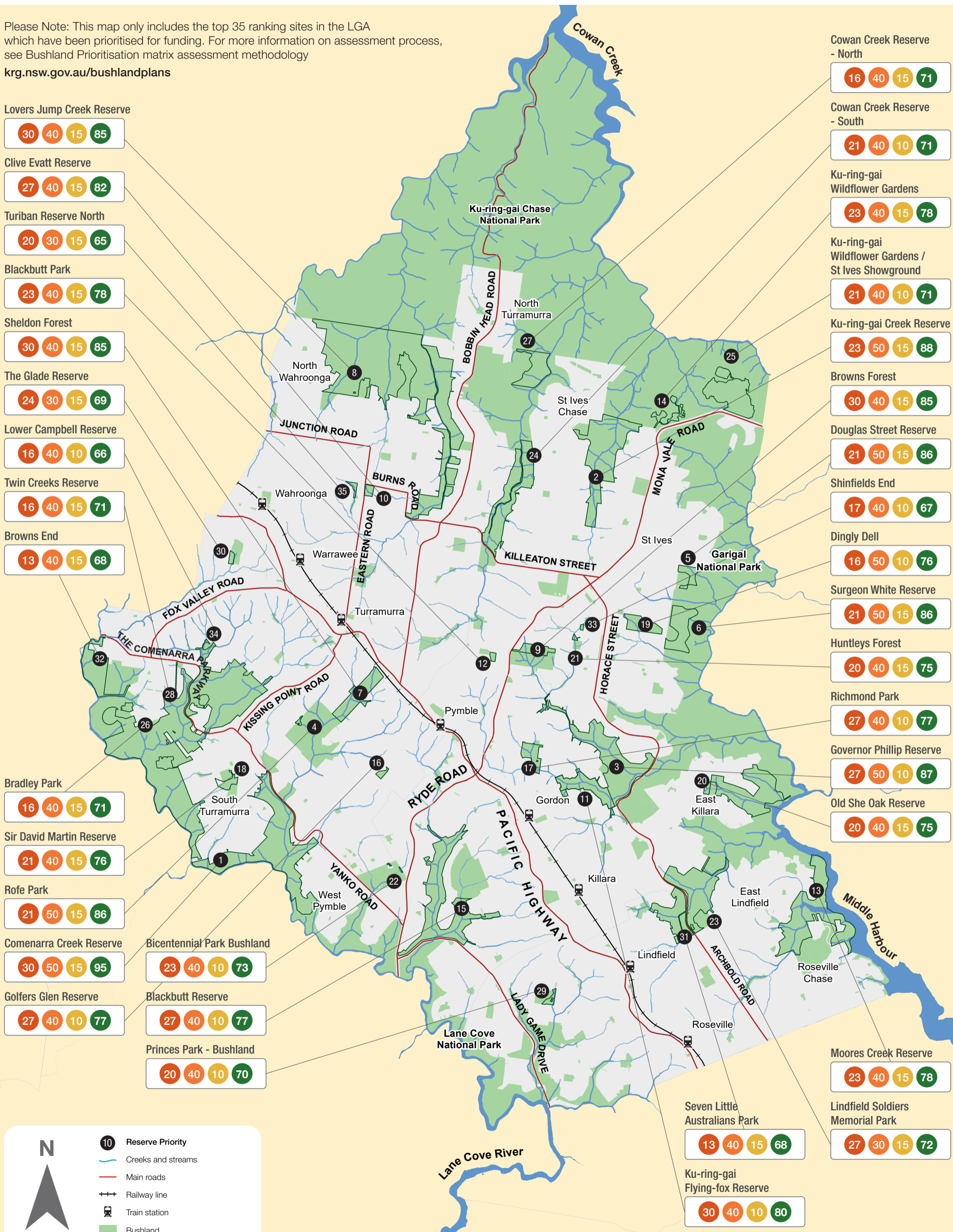
Lindfield Soldiers Memorial Park



Seven Little Australians Park



Ku-ring-gai Flying-fox Reserve



**N**

- 10 Reserve Priority
- Creeks and streams
- Main roads
- Railway line
- Train station
- Bushland