

# BUSHLAND PRIORITISATION MATRIX

## JULY 2023-JUNE 2025

Reserve

30 40 15 85

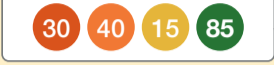
Significance	/ 30
Resilience	/ 50
Threats	/ 20
<b>Total Score</b>	<b>/ 100</b>



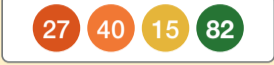
Please Note: This map only includes the top 34 ranking sites in the LGA which have been prioritised for funding. For more information on assessment process, see Bushland Prioritisation matrix assessment methodology

[krq.nsw.gov.au/bushlandplans](http://krq.nsw.gov.au/bushlandplans)

Lovers Jump Creek Reserve



Clive Evatt Reserve



Turiban Reserve North



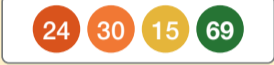
Blackbutt Park



Sheldon Forest



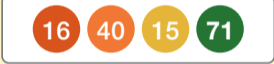
The Glade Reserve



Lower Campbell Reserve



Twin Creeks Reserve



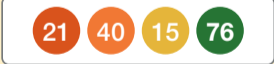
Browns End



Bradley Park



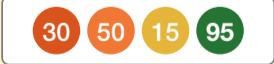
Sir David Martin Reserve



Rofe Park



Comenarra Creek Reserve



Golfers Glen Reserve



Bicentennial Park Bushland



Blackbutt Reserve



Princes Park - Bushland



Cowan Creek Reserve - North



Cowan Creek Reserve - South



Ku-ring-gai Wildflower Gardens



Ku-ring-gai Creek Reserve



Browns Forest



Douglas Street Reserve



Shinfields End



Dingly Dell



Surgeon White Reserve



Huntleys Forest



Richmond Park



Governor Phillip Reserve



Old She Oak Reserve



Moores Creek Reserve



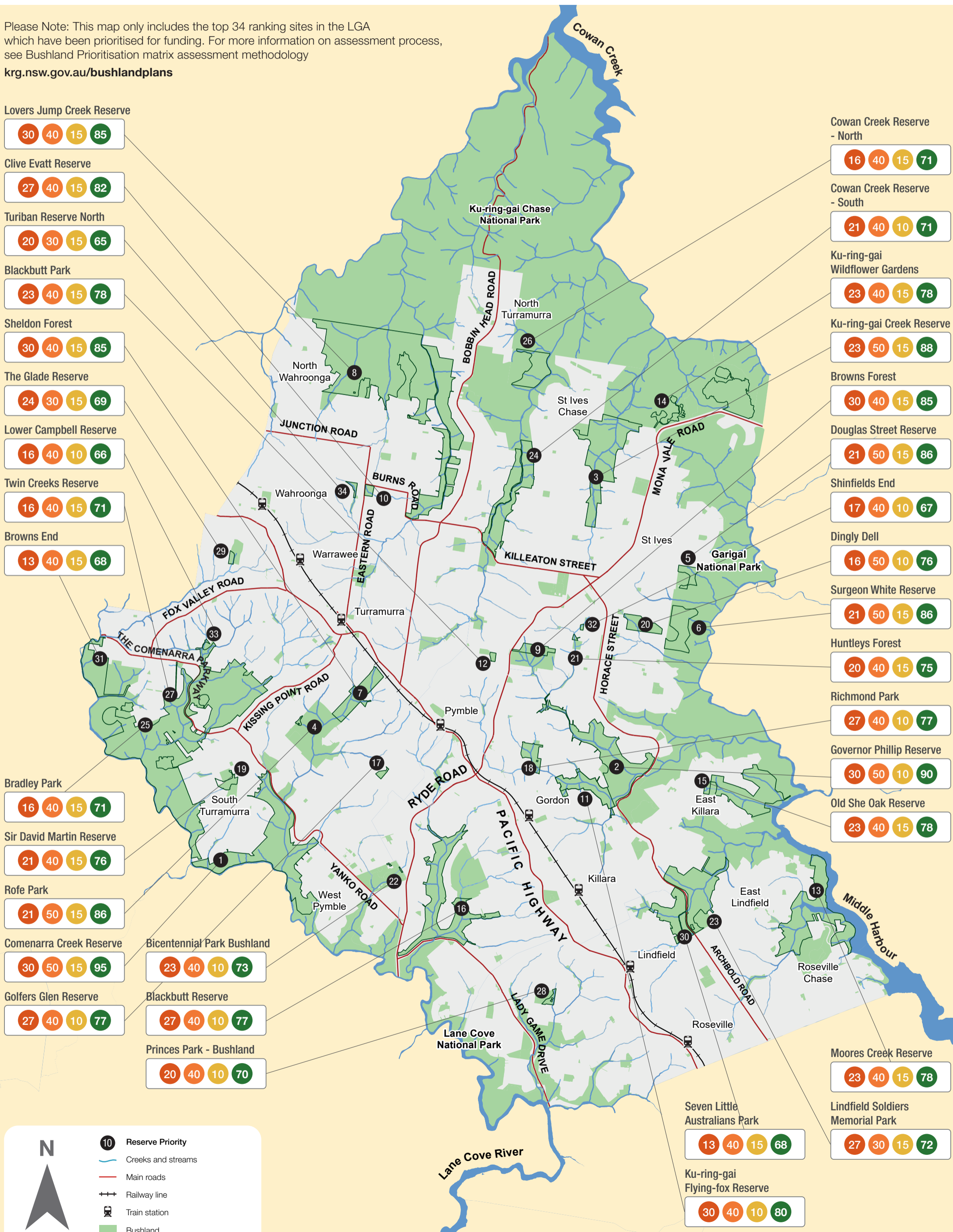
Lindfield Soldiers Memorial Park



Seven Little Australians Park



Ku-ring-gai Flying-fox Reserve



**N**

- 10** Reserve Priority
- Creeks and streams
- Main roads
- Railway line
- Train station
- Bushland