

# BUSHLAND PRIORITISATION MATRIX

## JULY 2019-JUNE 2021

Reserve

30 40 15 85

Significance / 30

Resilience / 50

Threats / 20

Total Score / 100



Please Note: This map only includes the top 35 ranking sites in the LGA which have been prioritised for funding. For more information on assessment process, see Bushland Prioritisation matrix assessment methodology

[kmc.nsw.gov.au/bushlandplanofmanagement](http://kmc.nsw.gov.au/bushlandplanofmanagement)

Lovers Jump Creek Reserve

30 40 15 85

Clive Evatt Reserve

27 40 15 82

Turiban Reserve North

23 30 15 68

Blackbutt Park

23 40 15 78

Sheldon Forest

30 40 15 85

The Glade Reserve

24 30 15 69

Lower Campbell Reserve

16 40 10 66

Twin Creeks Reserve

16 40 15 71

Browns End

13 40 15 68

Bradley Park

16 40 15 71

Sir David Martin Reserve

30 40 15 85

Rofe Park

30 50 15 95

Comenarra Creek Reserve

16 50 15 81

Golfers Glen Reserve

27 40 10 77

Bicentennial Park Bushland

23 40 10 73

Blackbutt Reserve

30 40 10 80

Princes Park - Bushland

23 40 10 73

Cowan Creek Reserve - North

16 40 15 71

Cowan Creek Reserve - South

30 40 10 80

Ku-ring-gai Wildflower Gardens

23 40 15 78

Ku-ring-gai Wildflower Gardens / St Ives Showground

21 40 10 71

Ku-ring-gai Creek Reserve

30 50 15 95

Browns Forest

30 40 15 85

Douglas Street Reserve

21 50 15 86

Shinfields End

17 40 10 67

Dingly Dell

16 50 10 76

Surgeon White Reserve

21 50 15 86

Huntleys Forest

20 40 15 75

Richmond Park

27 40 10 77

Governor Phillip Reserve

30 50 10 90

Old She Oak Reserve

20 40 15 75

Moore's Creek Reserve

23 40 15 78

Lindfield Soldiers Memorial Park

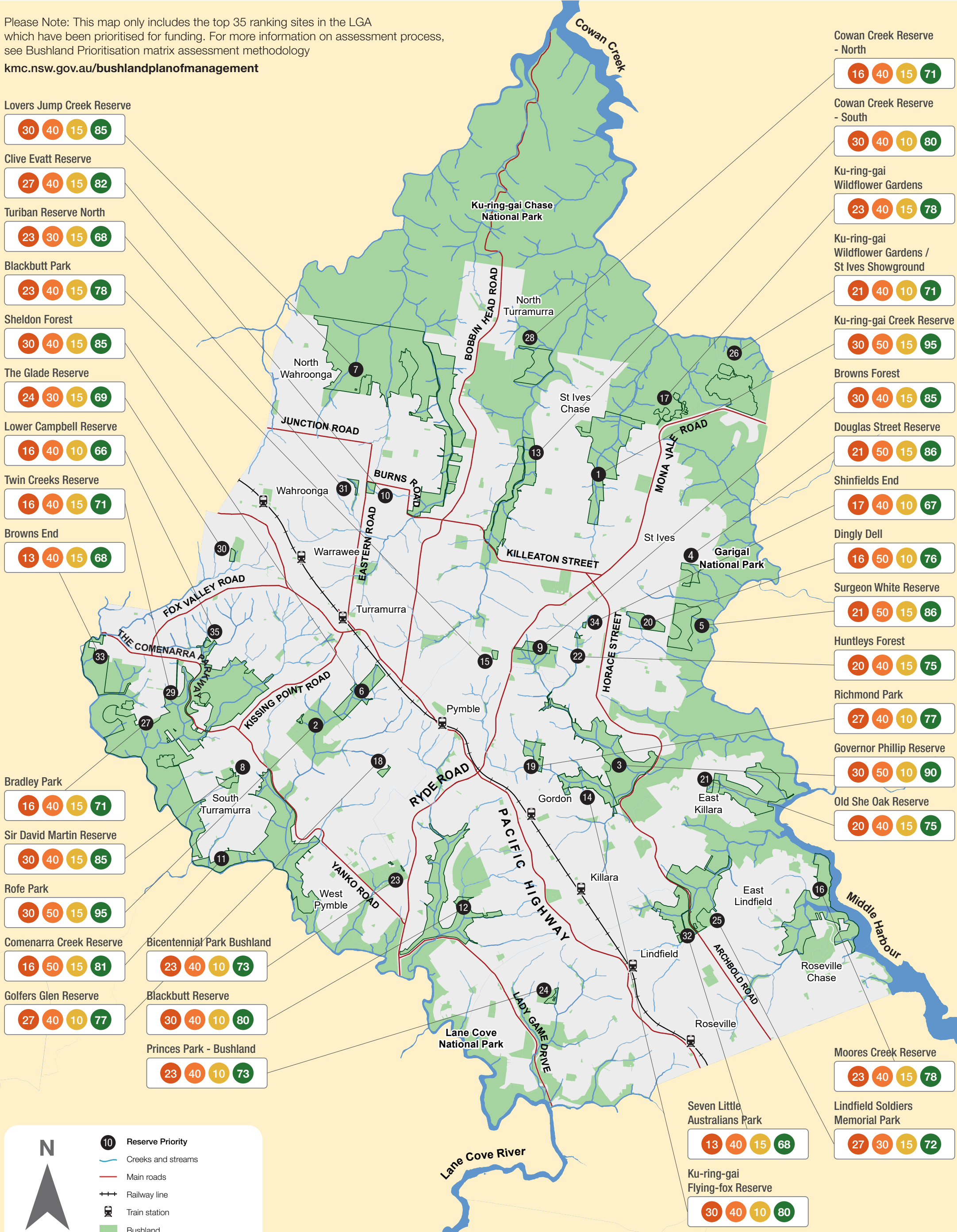
27 30 15 72

Seven Little Australians Park

13 40 15 68

Ku-ring-gai Flying-fox Reserve

30 40 10 80



**10 Reserve Priority**

Creeks and streams

Main roads

Railway line

Train station

Bushland