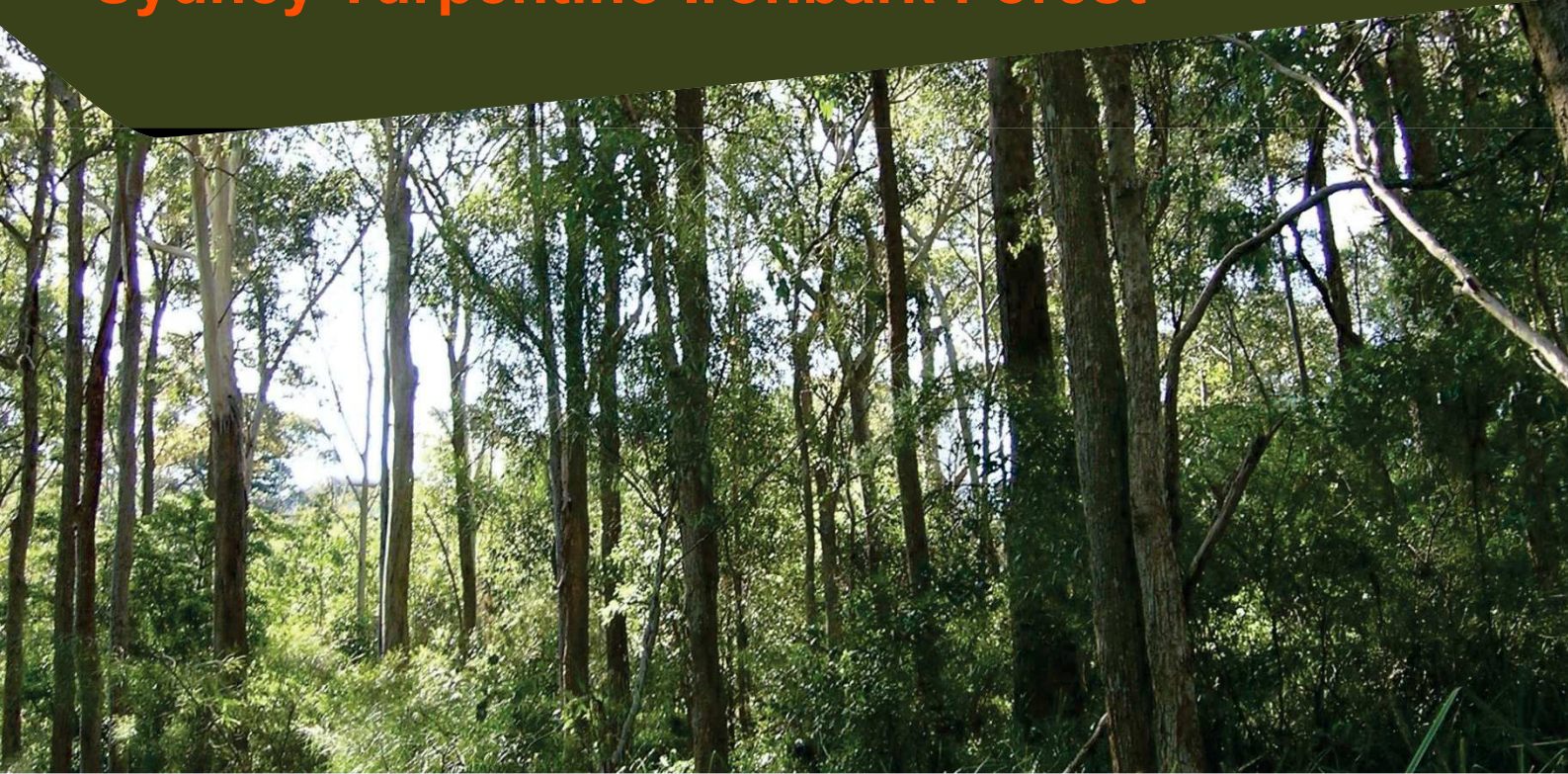


# Critically Endangered Ecological Communities in Ku-ring-gai Sydney Turpentine-Ironbark Forest



## Description

Sydney Turpentine-Ironbark Forest (STIF) is a medium to tall open forest, dominated by tree species including Turpentine (*Syncarpia glomulifera*), Blackbutt (*Eucalyptus pilularis*) and Smooth-barked Apple (*Angophora costata*).

In Ku-ring-gai it is found along Mona Vale Road, St. Ives, the southern end of Fox Valley Road and Bicentennial Park. Found along ridgelines and slopes on shale and shale-enriched sandstone soils. Seeds locked in this soil are the source of future generations of plants.

## Protection and Threats

STIF is protected as a Critically Endangered Ecological Community, under both the *NSW Biodiversity Conservation Act 2016* and Commonwealth *Environment Protection and Biodiversity Conservation Act 1999*. Threats to this community include: clearing along ridgelines, small-scale residential clearing, nutrient enrichment, weed invasion, garden escapes, recreational damage and rubbish dumping. Fragmentation of the forest also creates challenges for regeneration.

## Wildlife

This forest provides layers of habitat for wildlife, with mature trees providing nest hollows for Australia's largest owl - the Powerful Owl and also for the Glossy Black-Cockatoo.

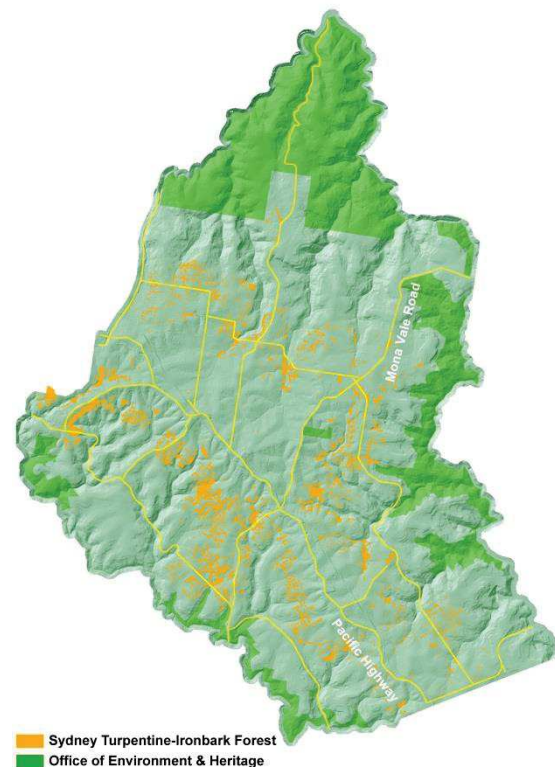
## What can you do?

There's lots you can do to help preserve STIF:

- Join a Bushcare group
- Keep your pets under control and report any fox sightings to us
- Never dump rubbish in bushland - penalties apply
- Remove weeds from your garden to stop them spreading
- [Install a raingarden](#) to manage stormwater
- If you live near this forest community you can plant some of the forest's native species in your garden to help attract birds, mammals and butterflies (see list over)

## For further information

- Visit the NSW [Office of Environment & Heritage](#) website



Only 0.5% of the original  
Sydney Turpentine-Ironbark  
Forest remains in Ku-ring-gai



# Species List

Canopy trees		Shrubs		Ground layer - graminoids		Ground layer - ferns & herbs		Climbers	
Botanical Name	Common Name	Botanical Name	Common Name	Botanical Name	Common Name	Botanical Name	Common Name	Botanical Name	Common Name
<i>Angophora costata</i>	Sydney Red Gum	<i>Acacia floribunda</i>	White Sally; Gossamer Wattle	<i>Aristida vagans</i>	Threeawn Speargrass	<i>Blechnum cartilagineum</i>	Gristle Fern	<i>Billardiera scandens</i>	Hairy Apple Berry
<i>Angophora floribunda</i>	Rough-Barked Apple	<i>Acacia longifolia</i>	Sydney Golden Wattle	<i>Austrodanthonia racemosa</i>	Slender Wallaby Grass	<i>Brunoniella australis</i>	Blue Trumpet	<i>Cassytha species</i>	Devil's Twine
<i>Corymbia gummifera</i>	Red Bloodwood	<i>Acacia terminalis</i>	Sunshine Wattle	<i>Austrodanthonia tenuior</i>	East Coast Wallaby Grass	<i>Calochlaena dubia</i>	Rainbow Fern	<i>Cayratia clematidea</i>	Native Grape
<i>Eucalyptus acmenoides</i>	White Mahogany	<i>Acacia ulicifolia</i>	Prickly Moses	<i>Austrostipa rudis</i>	Veined Spear-Grass	<i>Centella asiatica</i>	Indian Pennywort	<i>Clematis species</i>	Headache Vine
<i>Eucalyptus globoidea</i>	White Stringybark	<i>Breynia oblongifolia</i>	Coffee Bush	<i>Bothriochloa decipiens</i>	Red Grass; Redleg Grass	<i>Cryptostylis erecta</i>	Bonnet Orchid	<i>Commelina cyanea</i>	Native Wandering Jew
<i>Eucalyptus paniculata</i>	Grey Ironbark	<i>Bursaria spinosa</i>	Blackthorn, Boxthorn	<i>Carex inversa</i>	Knob Sedge	<i>Cyathea australis</i>	Black Tree-Fern	<i>Eustrephus latifolius</i>	Wombat Berry
<i>Eucalyptus pilularis</i>	Blackbutt	<i>Dodonaea triquetra</i>	Large Leaf Hop Bush	<i>Cyperus gracilis</i>	Slender Flat-Sedge	<i>Desmodium rhytidophyllum</i>	Tick-Trefoil	<i>Geitonoplesium cymosum</i>	Scrambling Lily
<i>Eucalyptus resinifera</i>	Red Mahogany	<i>Hibbertia aspera</i>	Rough Guinea Flower	<i>Dichelachne micrantha</i>	Plume Grass	<i>Desmodium varians</i>	Slender Tick-Trefoil	<i>Glycine clandestina</i>	Twining Glycine
<i>Eucalyptus saligna</i>	Sydney Blue Gum	<i>Indigofera australis</i>	Australian Indigo	<i>Dichelachne species</i>	Plume Grass	<i>Dianella caerulea</i>	Tufted Lily	<i>Glycine microphylla</i>	Small-Leaf Glycine
<i>Syncarpia glomulifera</i>	Turpentine	<i>Kunzea ambigua</i>	Tick Bush	<i>Echinopogon caespitosus</i>	Tufted Hedgehog Grass	<i>Dianella longifolia</i>	Blueberry Lily	<i>Glycine tabacina</i>	Variable Glycine
<b>Smaller trees</b>		<i>Leucopogon juniperinus</i>	Prickly Beard Heath	<i>Echinopogon ovatus</i>	Forest Hedgehog Grass	<i>Dichondra Repens</i>	Kidney Weed	<i>Hardenbergia violacea</i>	Purle Coral Pea; False Sarsparilla
<i>Acacia implexa</i>	Hickory Wattle	<i>Maytenus silvestris</i>	Orange Bush	<i>Entolasia marginata</i>	Margined Panic Grass	<i>Euchiton sphaericus</i>	Star Cudweed	<i>Hibbertia Dentata</i>	Climbing Guinea Flower
<i>Acacia parramattensis</i>	Parramatta Wattle	<i>Notelaea longifolia</i>	Large Mock Olive	<i>Entolasia stricta</i>	Wiry Panic Grass	<i>Galium gaudichaudii</i>	Rough Bedstraw	<i>Kennedia rubicunda</i>	Dusky Coral Pea
<i>Allocasuarina littoralis</i>	Black She-Oak	<i>Omalanthus populifolius</i>	Bleeding Heart; Native Poplar	<i>Eragrostis brownii</i>	Brown's Lovegrass	<i>Geranium homeanum</i>	Northern Cranesbill	<i>Morinda jasminoides</i>	Sweet Morinda
<i>Allocasuarina torulosa</i>	Forest She-Oak	<i>Ozothamnus diosmifolius</i>	Rice Flower; Sago Bush	<i>Imperata cylindrica var. major</i>	Blady Grass	<i>Goodenia hederacea</i>	Forest Goodenia	<i>Pandorea pandorana</i>	Wonga Wonga Vine
<i>Ceratopetalum gummiferum</i>	NSW Christmas Bush	<i>Pittosporum revolutum</i>	Wild Yellow Jasmine	<i>Lepidosperma laterale</i>	Variable Swordsedge	<i>Lindsaea linearis</i>	Screw Fern	<i>Smilax glyciphylla</i>	Sweet Sarsaparilla
<i>Elaeocarpus reticulatus</i>	Blueberry Ash	<i>Platylobium formosum</i>	Handsome Flat Pea	<i>Lomandra filiformis</i>	Wattle Mat Rush	<i>Opercularia diphylla</i>		<i>Stephania japonica var. discolor.</i>	Snake Vine
<i>Exocarpos cupressiformis</i>	Cherry Ballart; Native Cherry	<i>Polyscias sambucifolia</i>	Elderberry Panax	<i>Lomandra longifolia</i>	Spiny-Headed Mat Rush	<i>Oxalis perennans</i>	Grassland Wood Sorrel	<i>Tylophora barbata</i>	Bearded Tylophora
<i>Omalanthus populifolius</i>	Bleeding Heart; Native Poplar	<i>Pultenaea flexilis</i>	Graceful Bush-Pea	<i>Lomandra multiflora</i>	Many-Flowered Mat Rush	<i>Plantago debilis</i>	Shade Plantain	<i>Billardiera scandens</i>	Hairy Apple Berry
<i>Pittosporum undulatum</i>	Mock Orange	<i>Xanthosia pilosa</i>	Woolly Xanthosia	<i>Microlaena stipoides</i>	Weeping Grass	<i>Poranthera microphylla</i>	Small Poranthera		
<i>Tristaniopsis laurina</i>	Water Gum	<i>Zieria smithii</i>	Sandfly Zieria	<i>Oplismenus aemulus</i>	Creeping Beard Grass	<i>Pratia purpurascens</i>	Whiteroot		
				<i>Oplismenus imbecillus</i>	Creeping Beard Grass	<i>Pseuderanthemum variable</i>	Pastel Flower		
				<i>Panicum simile</i>	Two-Colour Panic	<i>Pteridium esculentum</i>	Common Bracken		
				<i>Poa affinis</i>		<i>Pterostylis nutans</i>	Nodding Greenhood		
				<i>Themeda australis</i>	Kangaroo Grass	<i>Veronica plebeia</i>	Trailing Speedwell		
						<i>Wahlenbergia gracilis</i>	Sprawling Bluebell		