

Endangered Ecological Communities in Ku-ring-gai Coastal Upland Swamp



Image © Andrew Robinson

Description

Coastal Upland Swamps have a diverse range of vegetation dominated by sclerophyll shrubs and/or sedges, with dynamic mosaics of structural forms. Locally these communities include heathland, sedgeland, closed scrub and very low open-woodland. Although typically treeless, Coastal Upland Swamp may include scattered trees.

In Ku-ring-gai these swamps are typically associated with sandstone plateaus with soils that are periodically waterlogged. The two main occurrences of this plant community are in the Wildflower Gardens at St Ives and nearby at Warrimoo Oval in St Ives Chase.

Protection and Threats

Coastal Upland Swamp is an Endangered Ecological Community, protected under the *NSW Threatened Species Conservation Act 1995*. Threats include: clearing associated with infrastructure, high fire frequency and localised disturbance from unauthorised access by vehicles, trail bikes and horses.

Wildlife

These swamps provide important habitat for a wide variety of birds, mammals, amphibians and invertebrates. Species found locally include the Swamp Wallaby, Brown Antechinus and New Holland Honeyeater.

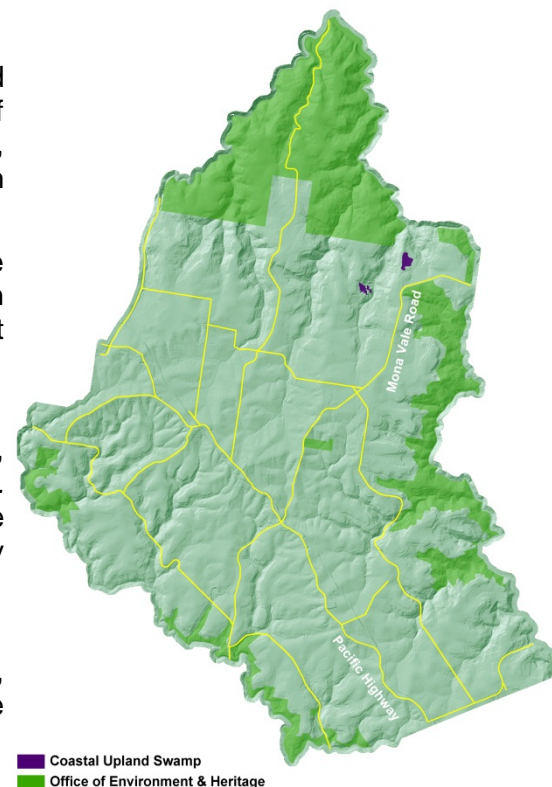
What can you do?

There's lots you can do to help preserve Coastal Upland Swamp

- Remain on formal walking tracks and fire trails at all times
- Remove weeds from your garden to stop them spreading
- Manage stormwater eg [Install a raingarden](#)
- Never dump rubbish in bushland - penalties apply
- If you live near this forest community you can plant some of the forest's native species in your garden to help attract birds, mammals and butterflies (see list over)

For further information

- Visit the NSW [Office of Environment & Heritage](#) website



The Wildflower Gardens at St Ives has one of the main sites of Coastal Upland Swamp in Ku-ring-gai

Species List – Coastal Upland Swamp

Canopy trees		Shrubs (continued)		Shrubs (continued)		Ground layer – Graminoids (cont'd)		Ground layer – ferns & herbs (cont'd)	
Botanical Name	Common Name	Botanical Name	Common Name	Botanical Name	Common Name	Botanical Name	Common Name	Botanical Name	Common Name
<i>Angophora crassifolia</i>		<i>Darwinia fascicularis</i>		<i>Melaleuca deanei</i>	Deane's Melaleuca	<i>Lepidosperma concavum</i>	Sandhill Sword-sedge	<i>Gleichenia dicarpa</i>	Pouched Coral Fern
<i>Corymbia gummifera</i>	Red Bloodwood	<i>Dillwynia floribunda</i>	Many-flowered Dillwynia	<i>Mirbelia rubiifolia</i>	Heathy Mirbelia	<i>Lepidosperma filiforme</i>	Common Rapier Sedge	<i>Gonocarpus micranthus</i>	Creeping Raspwort
<i>Eucalyptus capitellata x globoidea</i>	Brown Stringybark	<i>Epacris microphylla</i>	Coast Coral Heath	<i>Petrophile pulchella</i>	Conesticks	<i>Leptocarpus tenax</i>	Slender Twine Rush	<i>Gonocarpus teucrioides</i>	Germander Raspwort
<i>Eucalyptus haemastoma</i>	Scribbly Gum	<i>Epacris obtusifolia</i>	Blunt-Leaf Heath	<i>Platysace linearifolia</i>	Platysace Linearifolia	<i>Lepyrodia scariosa</i>	Chaffy Scale-rush	<i>Haemodorum planifolium</i>	Bloodroot
<i>Eucalyptus racemosa</i>	Narrow-Leaved Scribbly Gum	<i>Epacris pulchella</i>	Wallum Heath	<i>Sprengelia incarnata</i>	Pink Swamp Heath	<i>Lomandra obliqua</i>	Twisted Mat-rush	<i>Hibbertia aspera</i>	Rough Guinea Flower
		<i>Grevillea speciosa</i>	Red Spider Flower	<i>Styphelia tubiflora</i>	Red Five-corner	<i>Ptilothrix deusta</i>	Ptilothrix Deusta	<i>Lindsaea linearis</i>	Screw Fern
Shrubs	ferns & herbs							<i>Lindsaea microphylla</i>	Lacy Wedge Fern
Botanical Name	Common Name	<i>Hakea dactyloides</i>	Finger Hakea	<i>Viminaria juncea</i>	Native Broom	<i>Saropsis fastigiata</i>		<i>Lycopodiella lateralis</i>	Slender Clubmoss
<i>Acacia linifolia</i>	White Wattle	<i>Hakea gibbosa</i>	Needlebush	<i>Woolisia pungens</i>	Snow Wreath	<i>Schoenus apogon</i>	Common Bog-rush	<i>Micranthemum ericoides</i>	
<i>Acacia longifolia</i>	Sydney Golden Wattle	<i>Hakea propinqua</i>				<i>Schoenus brevifolius</i>	Zig-Zag Bog-rush		
<i>Acacia suaveolens</i>	Sweet Wattle	<i>Hakea teretifolia</i>	Dagger Hakea	Ground layer - Botanical Name	graminoids Common Name	<i>Schoenus ericetorum</i>	Heath Bog-rush	<i>Micromyrtus ciliata</i>	Fringed Heath-myrtle
<i>Acacia terminalis</i>	Sunshine Wattle	<i>Hibbertia cistiflora</i>		<i>Austrostipa pubescens</i>	Spear Grass	<i>Schoenus melanostachys</i>	Black Bog-rush	<i>Mitrasacme pilosa</i>	Hairy Mitrewort
<i>Allocasuarina littoralis</i>	Black She-oak	<i>Kunzea ambigua</i>	Tick Bush	<i>Baumea rubiginosa</i>	Flat Leaf Twig Rush	<i>Schoenus paludosus</i>	Schoenus Paludosus	<i>Opercularia aspera</i>	Coarse Stinkweed
<i>Angophora hispida</i>	Dwarf Apple	<i>Kunzea capitata</i>	Kunzea Capitata	<i>Cyathochaeta diandra</i>	Sheath Rush	<i>Xanthorrhoea resinosa</i>	Grass Tree	<i>Patersonia spp.</i>	Purple Flag
<i>Baeckea linifolia</i>	Weeping Baeckea	<i>Lambertia formosa</i>	Mountain Devil	<i>Empodisma minus</i>	Spreading Rope-rush			<i>Phyllanthus hirtellus</i>	Thyme Spurge
<i>Banksia ericifolia</i>	Heath-Leaved Banksia	<i>Leptospermum arachnoides</i>	Leptospermum Arachnoides	<i>Entolasia stricta</i>	Wiry Panic	Ground layer - Botanical Name	ferns & herbs Common Name	<i>Prasophyllum elatum</i>	Tall Leek Orchid
<i>Banksia oblongifolia</i>	Fern-leaved Banksia	<i>Leptospermum squarrosom</i>	Leptospermum Squarrosom	<i>Eragrostis brownii</i>	Brown's Lovegrass	<i>Actinotus minor</i>	Lesser Flannel Flower	<i>Stylidium lineare</i>	Narrow-leaved Trigge-plant
<i>Banksia serrata</i>	Old-Man Banksia	<i>Leptospermum trinervium</i>	Flaky-barked Tea-tree	<i>Gahnia clarkei</i>	Tall Saw-Sedge	<i>Bauera microphylla</i>		<i>Tetradthea ericifolia</i>	Pink Eye
<i>Banksia spinulosa</i>	Hairpin Banksia	<i>Leptospermum parvifolium</i>		<i>Gahnia erythrocarpa</i>		<i>Blandfordia nobilis</i>	Christmas Bells	<i>Tetradthea glandulosa</i>	Tetradthea Glandulosa
<i>Bauera rubioides</i>	River Rose	<i>Leptospermum polygalifolium</i>	Tantoon	<i>Gahnia sieberiana</i>	Red-Fruit Saw-sedge	<i>Burchardia umbellata</i>	Milkmaids	<i>Thelymitra ixioides</i>	Dotted Sun Orchid
<i>Boronia ledifolia</i>	Showy Boronia	<i>Leucopogon amplexicaulis</i>	Beard Heath	<i>Guringalia dimorpha</i>		<i>Dampiera stricta</i>	Blue Dampiera	<i>Utricularia dichotoma</i>	Purple Bladderwort
<i>Boronia pinnata</i>		<i>Leucopogon ericoides</i>	Pink Beard-heath	<i>Juncus continuus</i>		<i>Drosera peltata</i>	Pale Sundew	<i>Xanthosia pilosa</i>	Woolly Xanthosia
<i>Callistemon citrinus</i>	Crimson Bottlebrush	<i>Leucopogon esquamatus</i>	Swamp Beard-heath	<i>Juncus planifolius</i>		<i>Drosera spatulata</i>	Rosy Sundew	<i>Xanthosia tridentata</i>	Rock Xanthosia
<i>Calytrix tetragona</i>	Common Fringe-myrtle	<i>Leucopogon microphyllus</i>	Hairy Beard-heath	<i>Juncus usitatus</i>	Common Rush	<i>Epacris crassifolia</i>		<i>Xyris operculata</i>	Tall Yellow-eye

Reference: D Edmonds and A Robinson, 2012, *An Assessment of Coastal Upland Swamp within the Ku-ring-gai Council Local Government Area.*