

Endangered Ecological Communities in Ku-ring-gai

Coastal Saltmarsh

(Within Ku-ring-gai this includes Estuarine Saltmarsh)



Description

A saltmarsh is a community of plants and low shrubs that can tolerate high soil salinity and occasional inundation from salt water. They are found on the shores of land that is inundated by tides and tend to form on plains that adjoin mangroves. Characteristic plants include bare twig rush, sea rush, samphire, streaked arrowgrass, knobby club-rush, creeping brookweed and seablite. Occasionally mangroves may be scattered through the saltmarsh.

In Ku-ring-gai it is typically found along intertidal zones within Middle Harbour.

Protection and Threats

Coastal saltmarsh is listed as an Endangered Ecological Community, protected under the *NSW Threatened Species Conservation Act 1995*. Threats include: land reclamation, recreational use, rubbish dumping, weed invasion, sedimentation and sea level rise.

Why are saltmarshes important?

Saltmarsh are important to fish as they provide sources of food, habitat and shelter when inundated at high tide. Crabs are common in saltmarsh communities, and are a significant food for several fish species. Saltmarshes also act as a buffer and filtration system for sediments and nutrients.

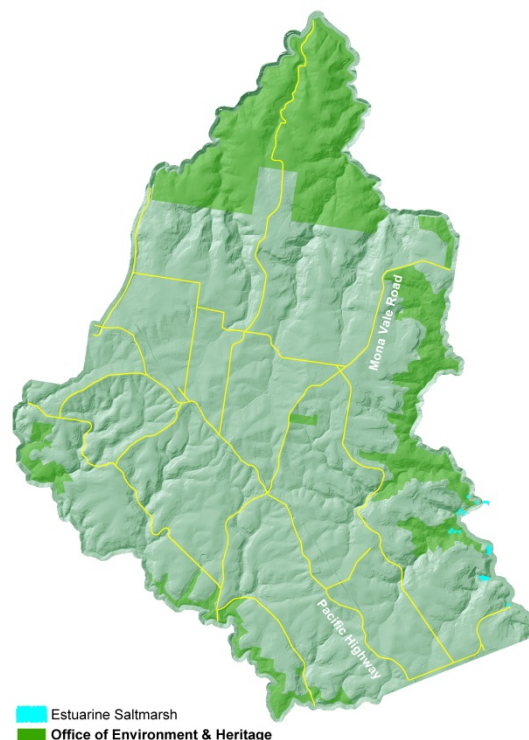
What can you do?

There's lots you can do to help preserve saltmarshes in Ku-ring-gai:

- Keep out of areas of saltmarsh that are regenerating
- Keep your pets out of saltmarsh areas
- Never dump rubbish in bushland - penalties apply
- Remove weeds from your garden to stop them spreading
- Join a Bushcare group
- [Install a raingarden](#) to manage stormwater

For further information

- Visit the NSW [Office of Environment & Heritage](#) website



Ku-ring-gai has small pockets of saltmarsh Middle Harbour

Species List

Trees		Shrubs		Ground layer - graminoids		Ground layer - ferns & herbs	
Botanical Name	Common Name	Botanical Name	Common Name	Botanical Name	Common Name	Botanical Name	Common Name
<i>Casuarina glauca</i>	Swamp oak	<i>Aegiceras corniculatum</i>	River mangrove	<i>Baumea juncea</i>	Bare twig rush	<i>Samolus repens</i>	Creeping brookweed
		<i>Sarcocornia quinqueflora</i> subsp. <i>quinqueflora</i>	Beaded Samphire	<i>Ficinia nodosa</i>	Knobby club-rush	<i>Suaeda australis</i>	Seablite
		<i>Sarcocornia quinqueflora</i> subsp. <i>quinqueflora</i>	Sydney Golden Wattle	<i>Juncus kraussii</i> subsp. <i>Australiensis</i>	Sea rush	<i>Tetragonia tetragonioides</i>	Warrigal greens
				<i>Phragmites australis</i>	Common reed		
				<i>Triglochin striata</i>	Streaked arrowgrass		

Species list source: *The Native Vegetation of the Sydney Metropolitan Area. Volume 2: Vegetation Community Profiles*. 2013, Version 2.0. NSW Office of Environment and Heritage, Sydney.