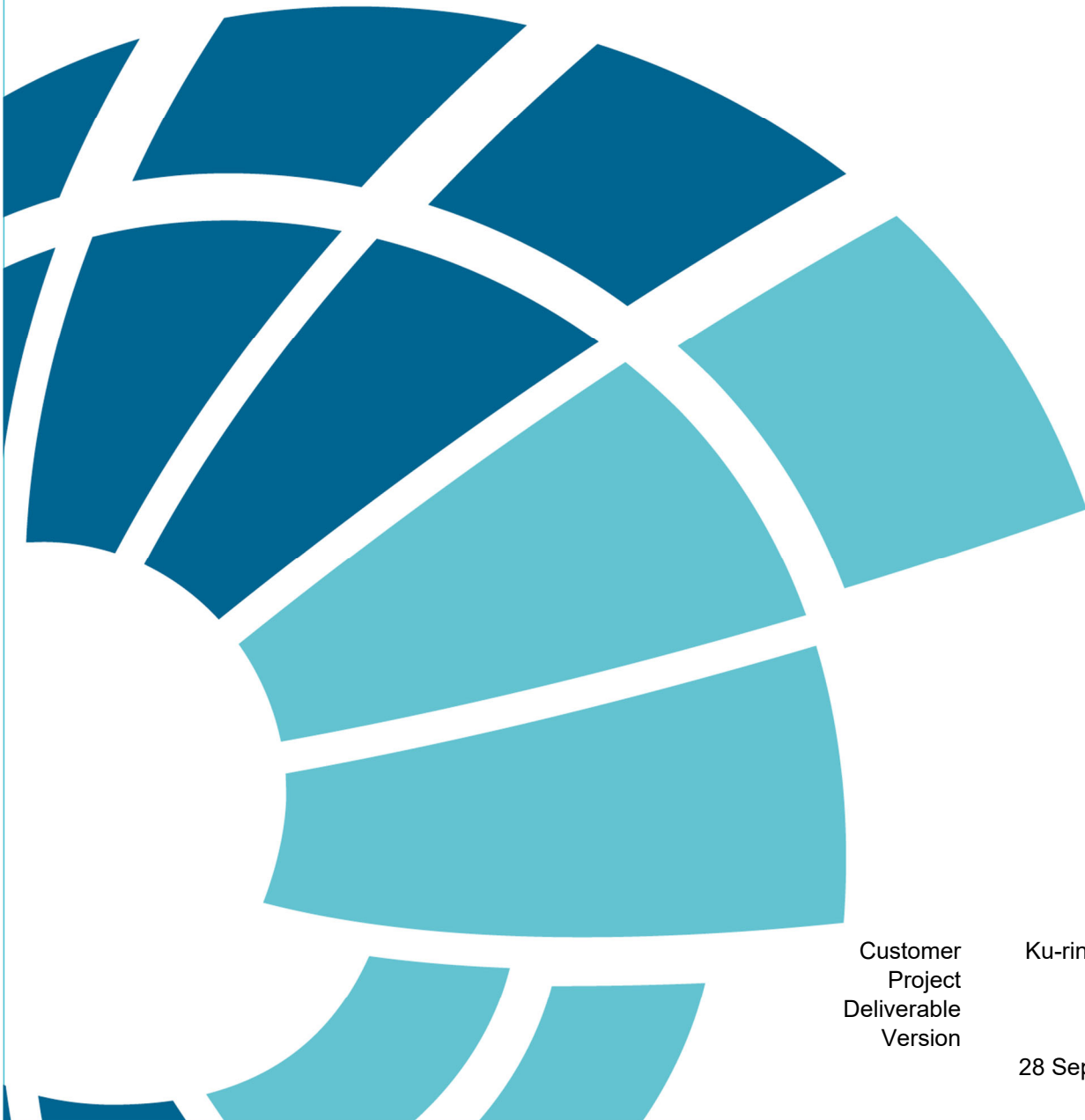


# Middle Harbour Southern Catchments Flood Study

Volume 2 - Design Flood Results



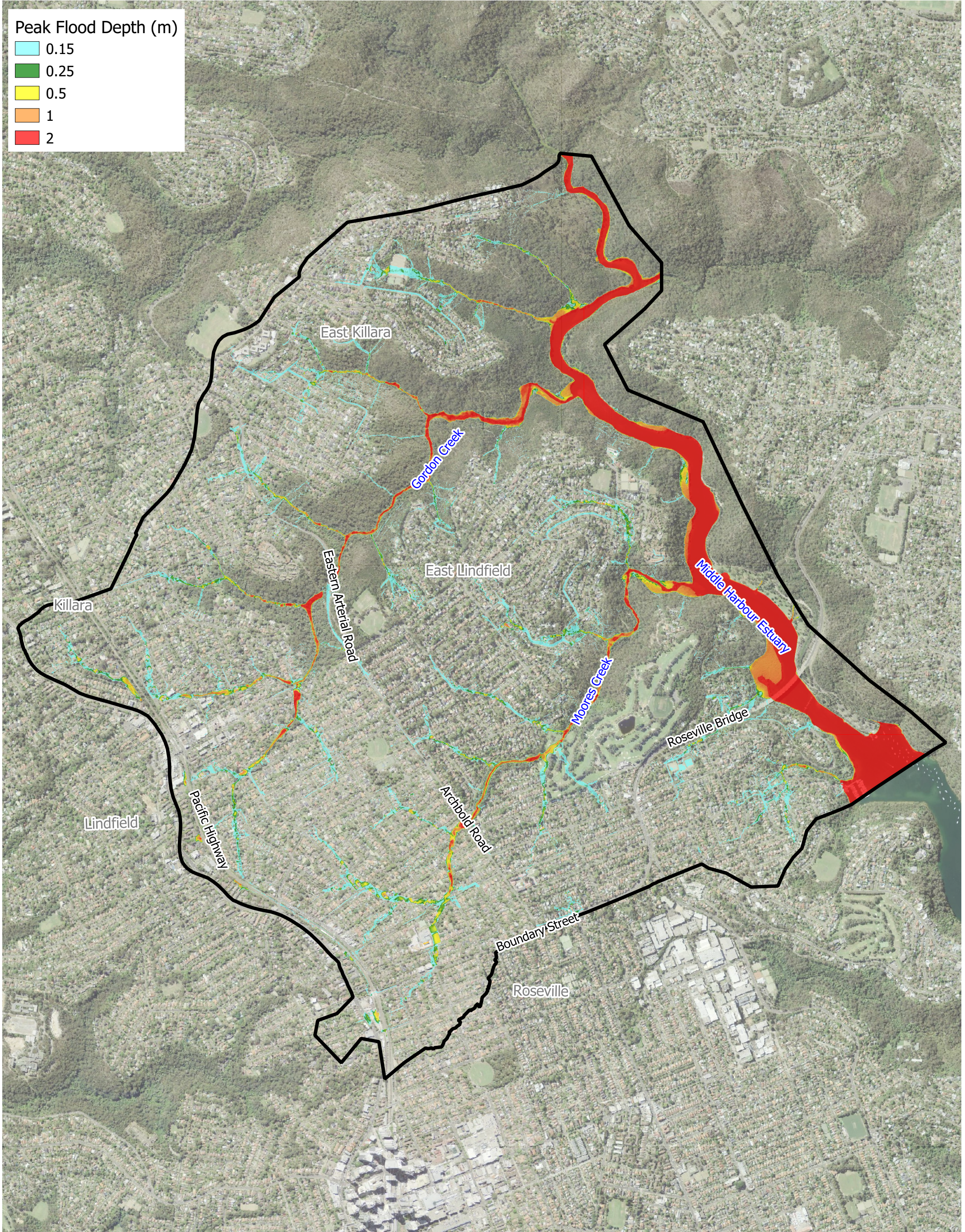
Customer  
Project  
Deliverable  
Version

Ku-ring-gai Council  
S20504  
004  
02  
28 September 2022


## Annex H Design Flood Results

---





**Legend**

 Model Domain

Title:

**Peak Flood Depth - 20% AEP Event**

Drawing:

**H-1**

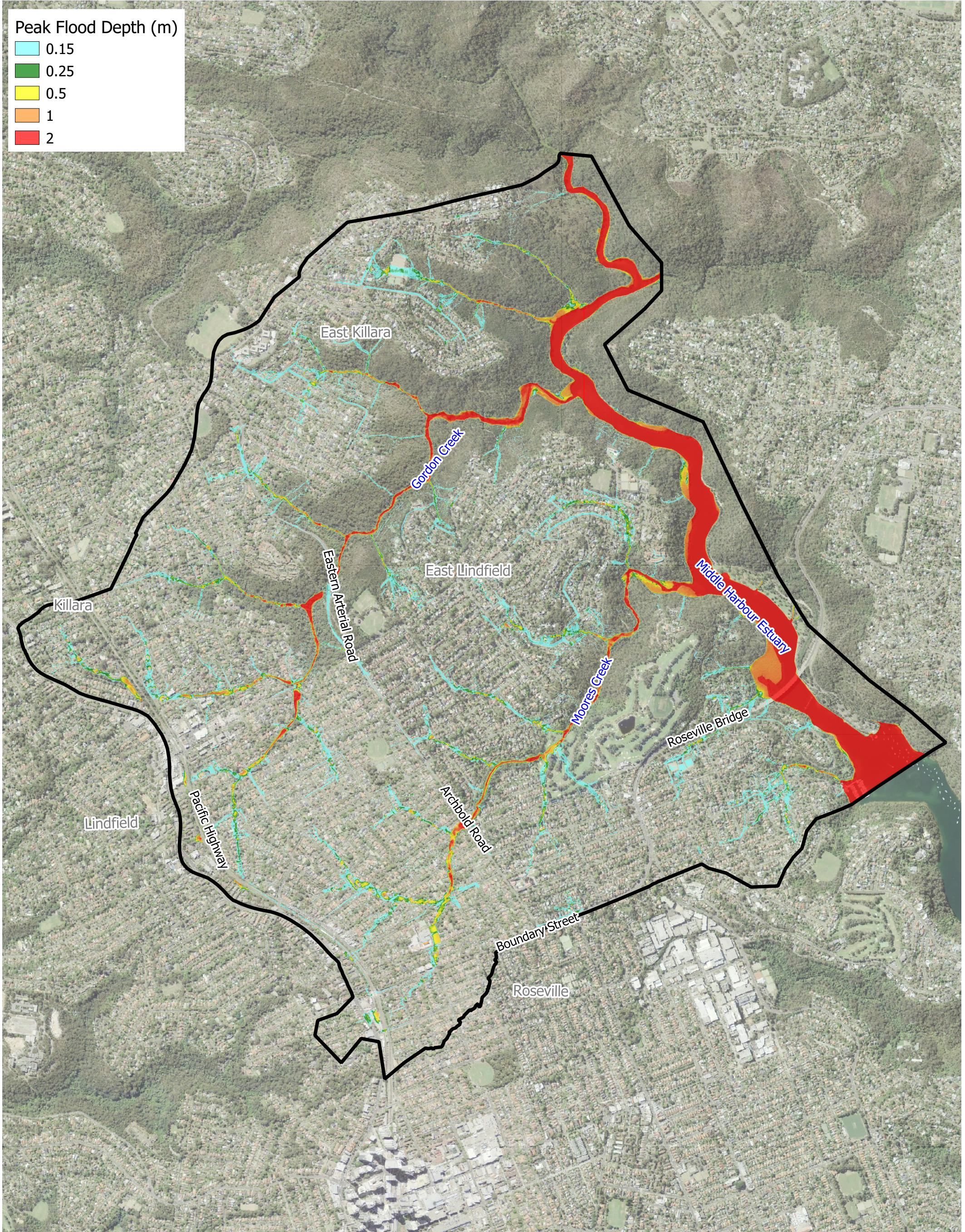
Rev:

**A**


BMT endeavours to ensure that the information provided in this map is correct at the time of publication. BMT does not warrant, guarantee or make representations regarding the currency and accuracy of information contained in this map.







**Legend**

 Model Domain

Title:

**Peak Flood Depth - 10% AEP Event**

BMT endeavours to ensure that the information provided in this map is correct at the time of publication. BMT does not warrant, guarantee or make representations regarding the currency and accuracy of information contained in this map.

0 400 800 m



Drawing:

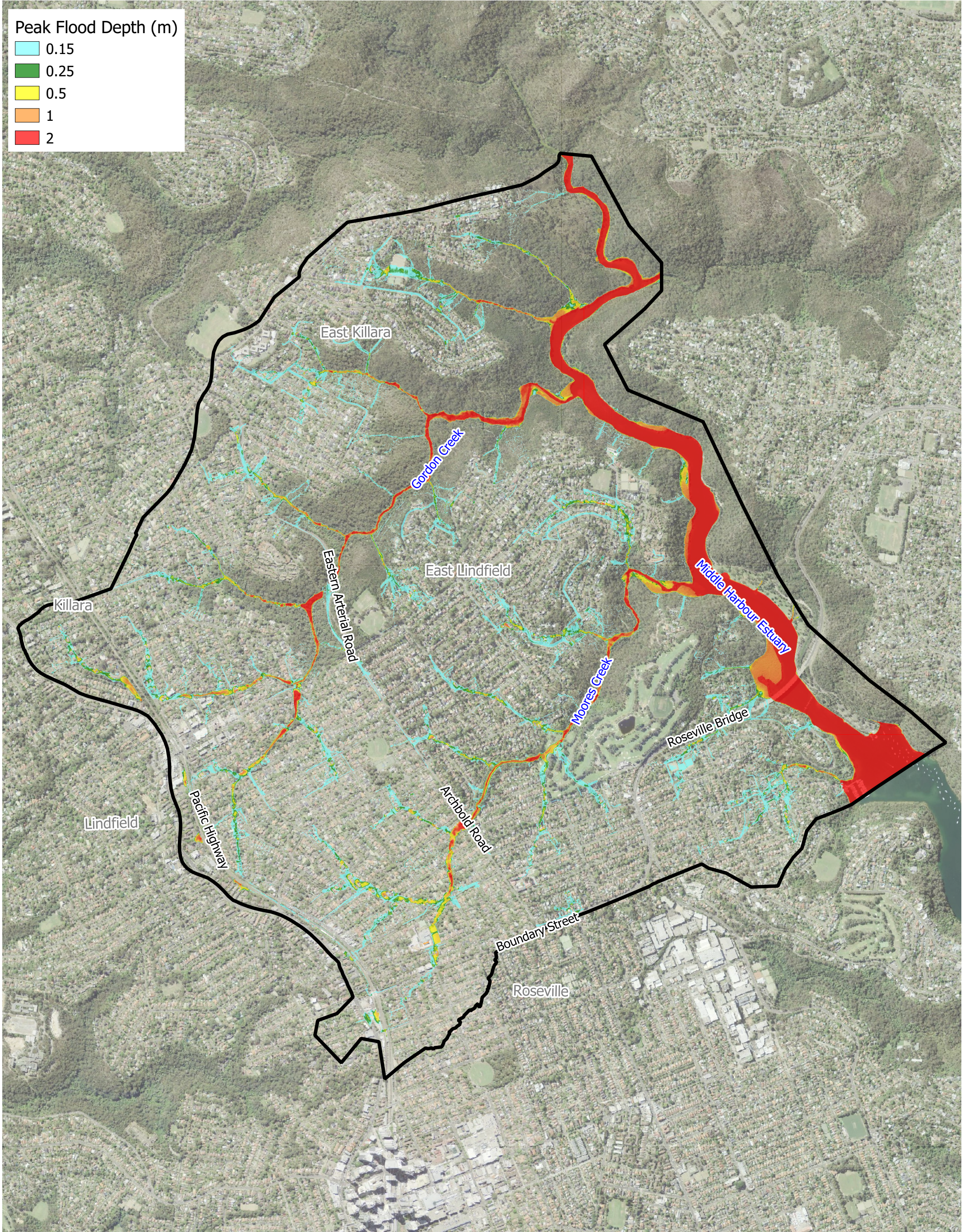
**H-2**

Rev:


**A**







**Legend**

 Model Domain

Title:

**Peak Flood Depth - 5% AEP Event**

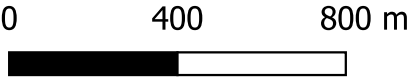
Drawing:

**H-3**

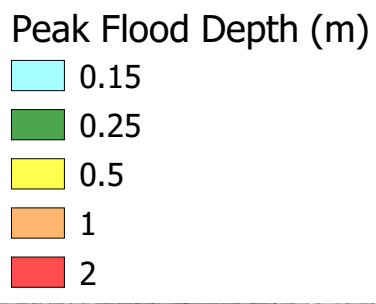
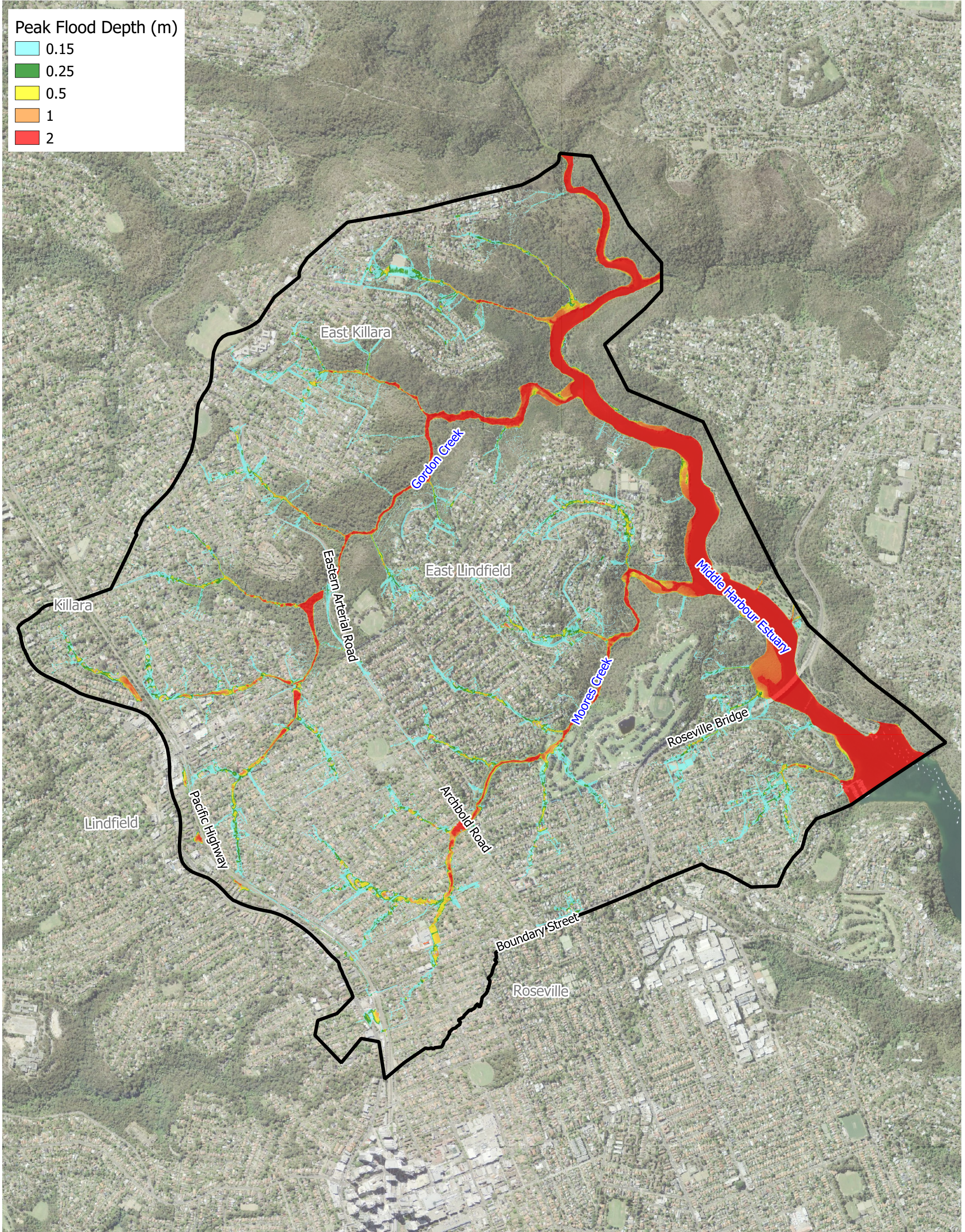
Rev:

**A**


BMT endeavours to ensure that the information provided in this map is correct at the time of publication. BMT does not warrant, guarantee or make representations regarding the currency and accuracy of information contained in this map.







Legend

 Model Domain

Title:

**Peak Flood Depth - 2% AEP Event**

BMT endeavours to ensure that the information provided in this map is correct at the time of publication. BMT does not warrant, guarantee or make representations regarding the currency and accuracy of information contained in this map.



Drawing:

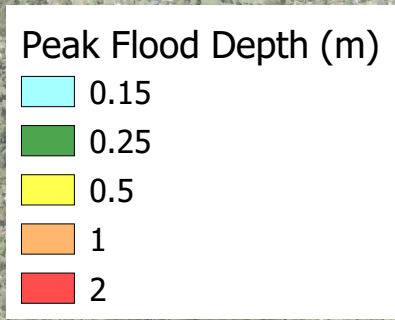
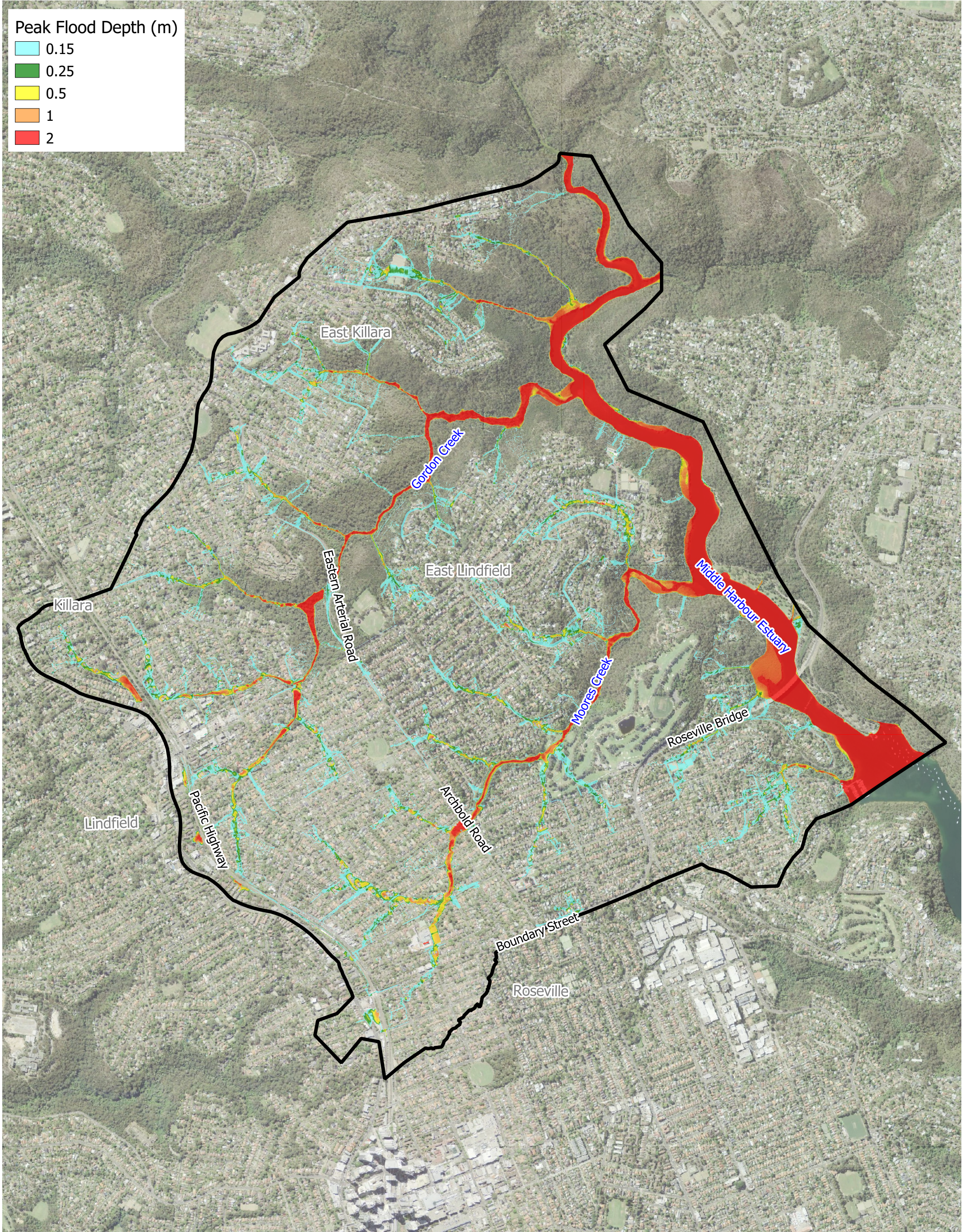
**H-4**

Rev:

**A**







Legend

 Model Domain

Title:

**Peak Flood Depth - 1% AEP Event**

BMT endeavours to ensure that the information provided in this map is correct at the time of publication. BMT does not warrant, guarantee or make representations regarding the currency and accuracy of information contained in this map.



Drawing:

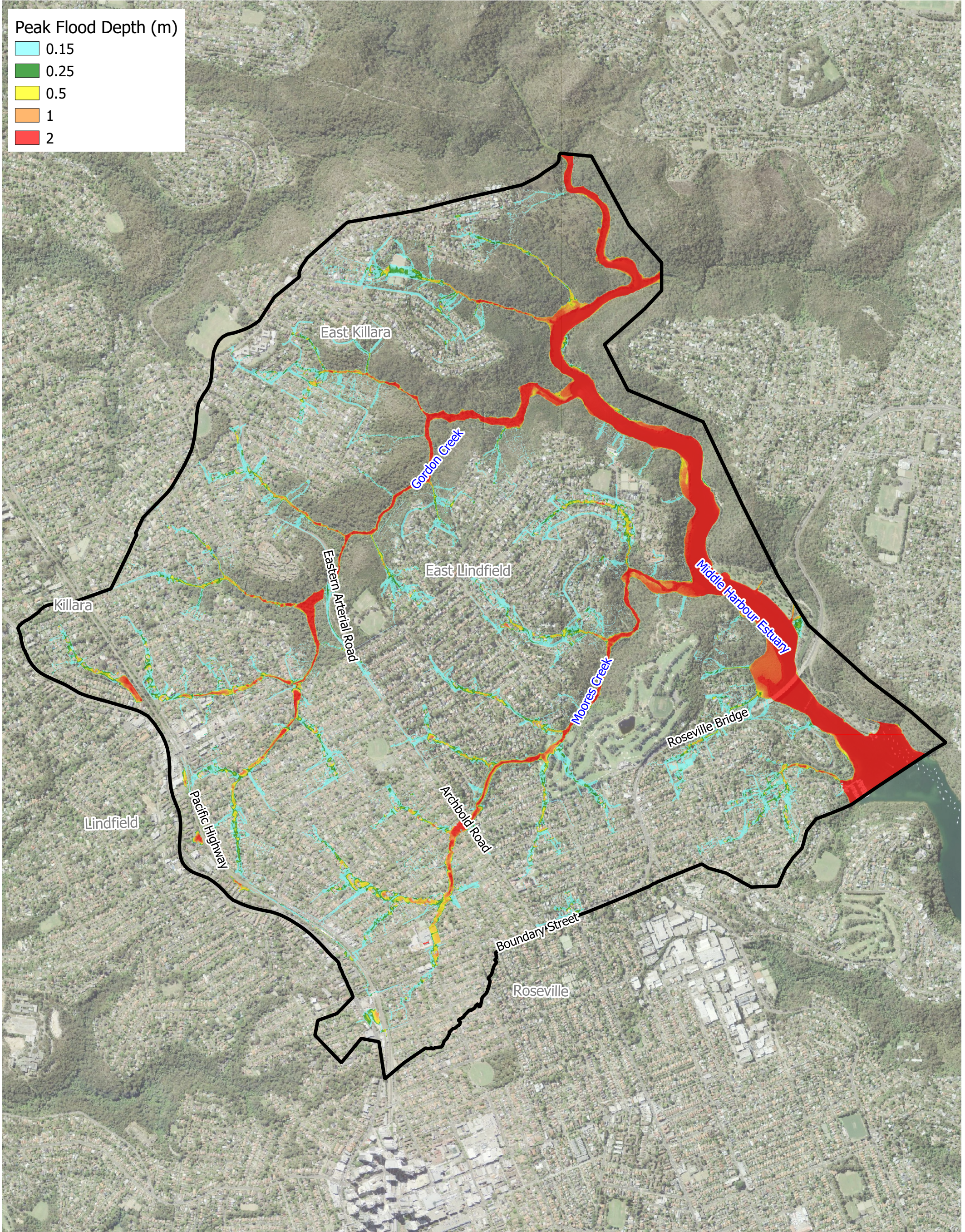
**H-5**

Rev:

**A**







Legend

 Model Domain

Title:  
**Peak Flood Depth - 0.5% AEP Event**

BMT endeavours to ensure that the information provided in this map is correct at the time of publication. BMT does not warrant, guarantee or make representations regarding the currency and accuracy of information contained in this map.

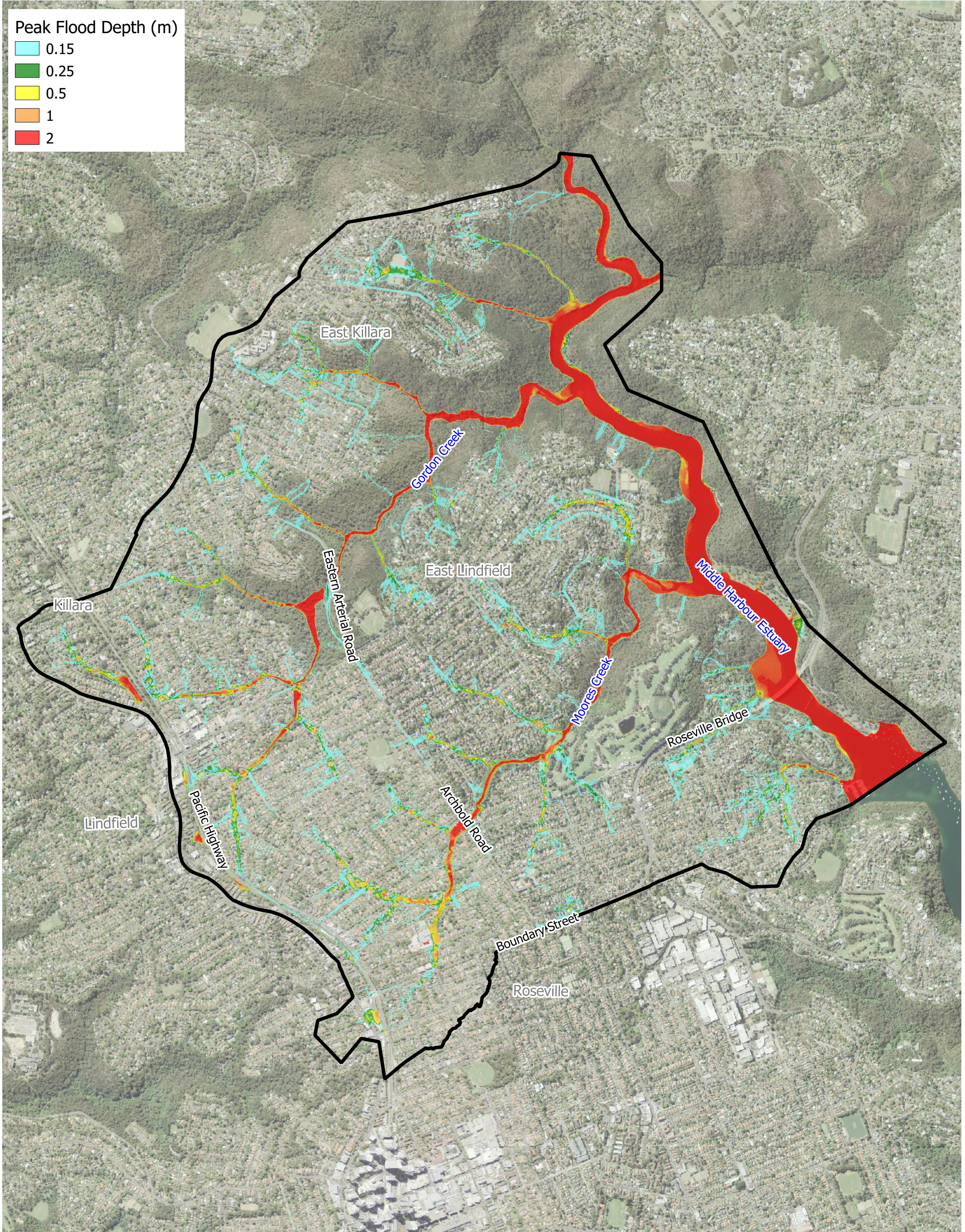


Drawing:  
**H-6**

Rev:  
**A**







Legend

 Model Domain

Title:  
**Peak Flood Depth - 0.2% AEP Event**

BMT endeavours to ensure that the information provided in this map is correct at the time of publication. BMT does not warrant, guarantee or make representations regarding the currency and accuracy of information contained in this map.

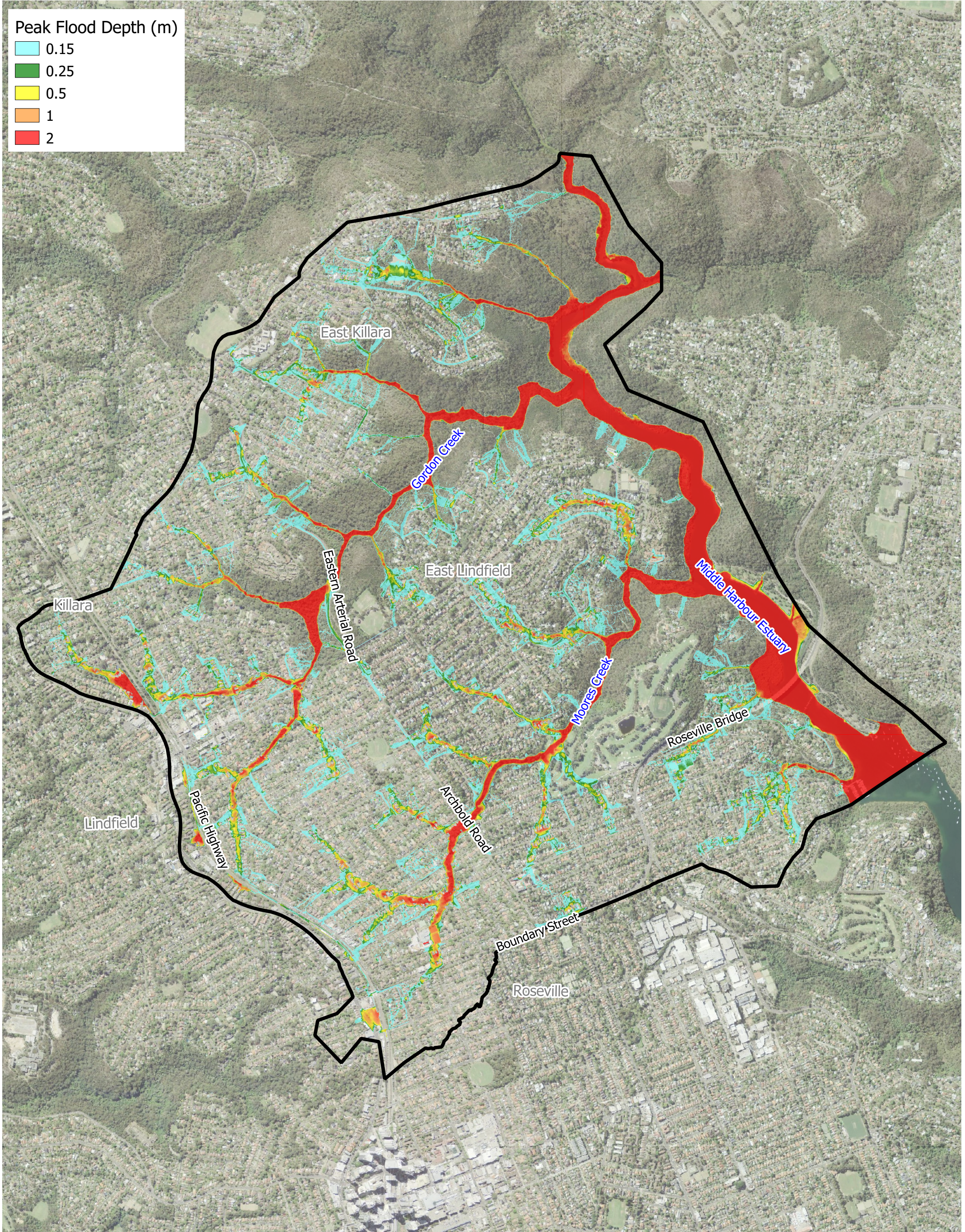


Drawing:  
**H-7**

Rev:  
**A**







Legend

 Model Domain

Title:  
**Peak Flood Depth - PMF Event**

BMT endeavours to ensure that the information provided in this map is correct at the time of publication. BMT does not warrant, guarantee or make representations regarding the currency and accuracy of information contained in this map.



Drawing:  
**H-8**

Rev:  
**A**

