

WATER QUALITY REPORT CARD

SPRING 2015

Waterway health grading

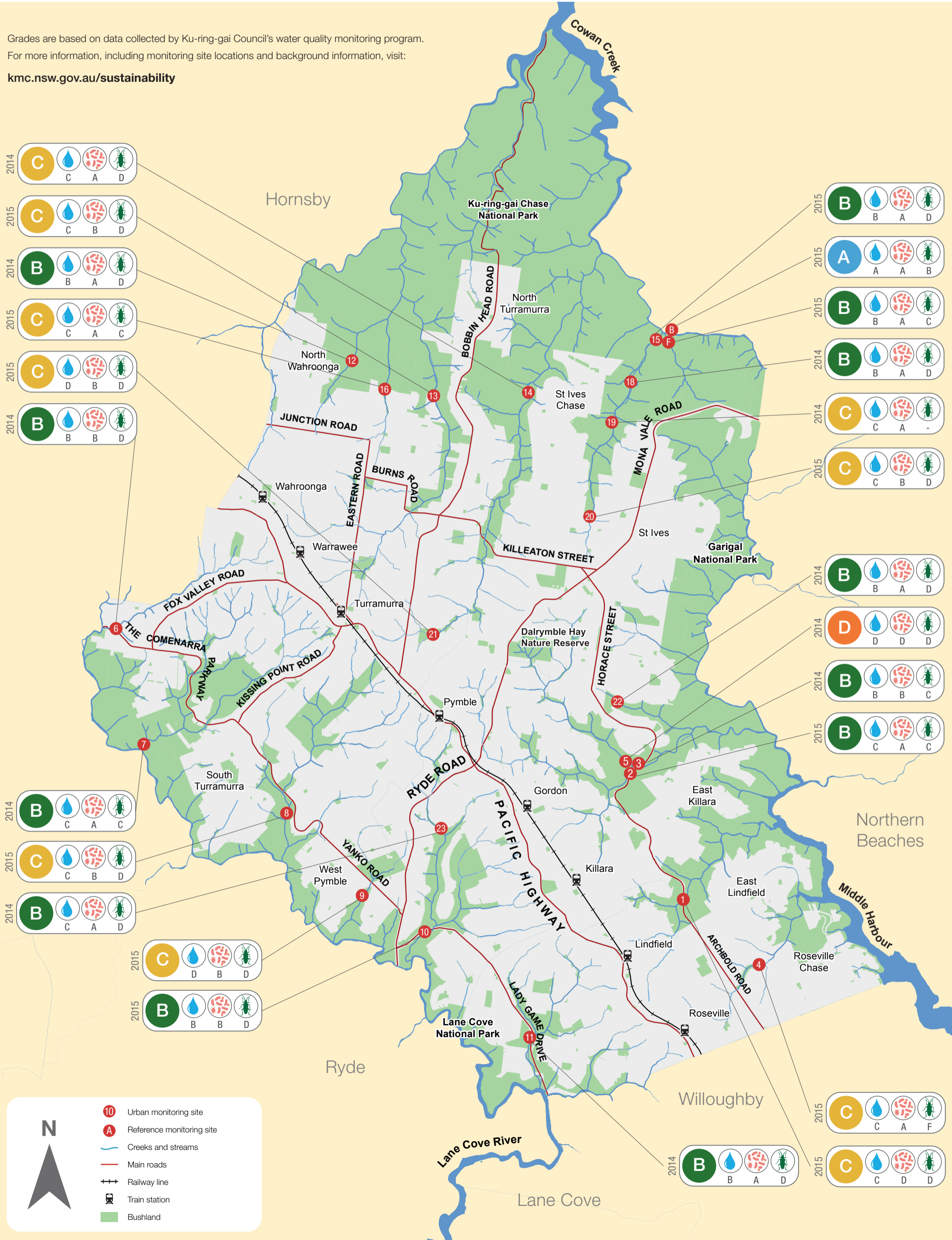
A	Excellent	Clean water and a healthy ecosystem
B	Good	Increasingly degraded water quality and ecosystems
C	Fair	
D	Poor	Very poor water quality and a severely impaired ecosystem
F	Fail	

Physical & chemical condition: A (Water drop icon)
 Bacterial contamination: A (Microbes icon), B (Microbes icon), A (Microbes icon)
 Water bugs (SIGNAL 2): A (Insect icon)



Grades are based on data collected by Ku-ring-gai Council's water quality monitoring program.
 For more information, including monitoring site locations and background information, visit:

kmc.nsw.gov.au/sustainability



Legend:

- 10 Urban monitoring site
- A Reference monitoring site
- Blue line Creeks and streams
- Red line Main roads
- Black line with cross-ticks Railway line
- Black square with cross Train station
- Green square Bushland

WATER QUALITY REPORT CARD

AUTUMN 2016

Waterway health grading

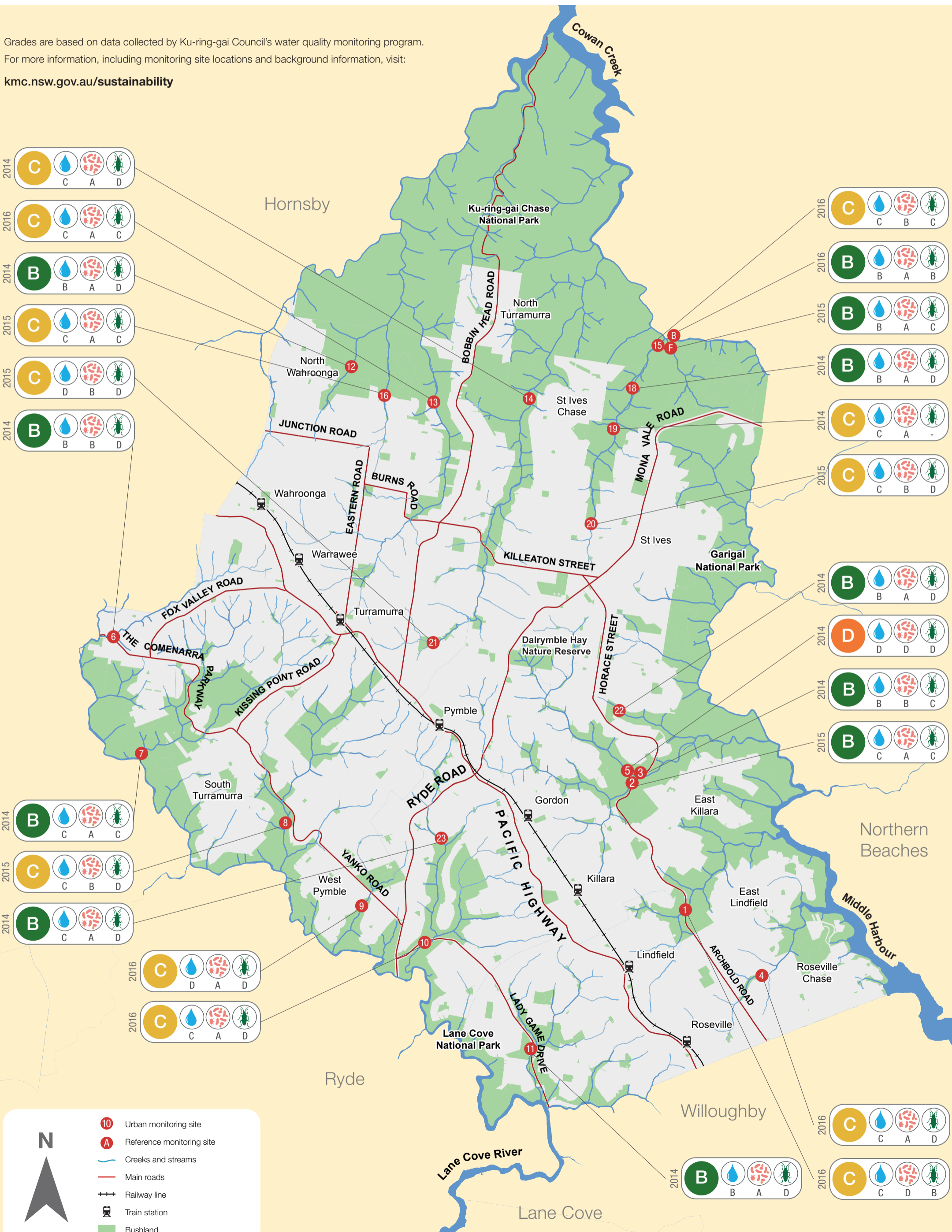
A	Excellent	Clean water and a healthy ecosystem
B	Good	Increasingly degraded water quality and ecosystems
C	Fair	
D	Poor	Very poor water quality and a severely impaired ecosystem
F	Fail	

Physical & chemical condition: A (Water drop icon)
 Bacterial contamination: A (Microbes icon), B (Microbes icon), A (Microbes icon)
 Water bugs (SIGNAL 2): A (Insect icon)



Grades are based on data collected by Ku-ring-gai Council's water quality monitoring program.
 For more information, including monitoring site locations and background information, visit:

kmc.nsw.gov.au/sustainability



Legend:

- 10 Urban monitoring site
- A Reference monitoring site
- Blue line Creeks and streams
- Red line Main roads
- Black line with cross-ticks Railway line
- Black square with cross Train station
- Green square Bushland

WATER QUALITY REPORT CARD

SPRING 2016

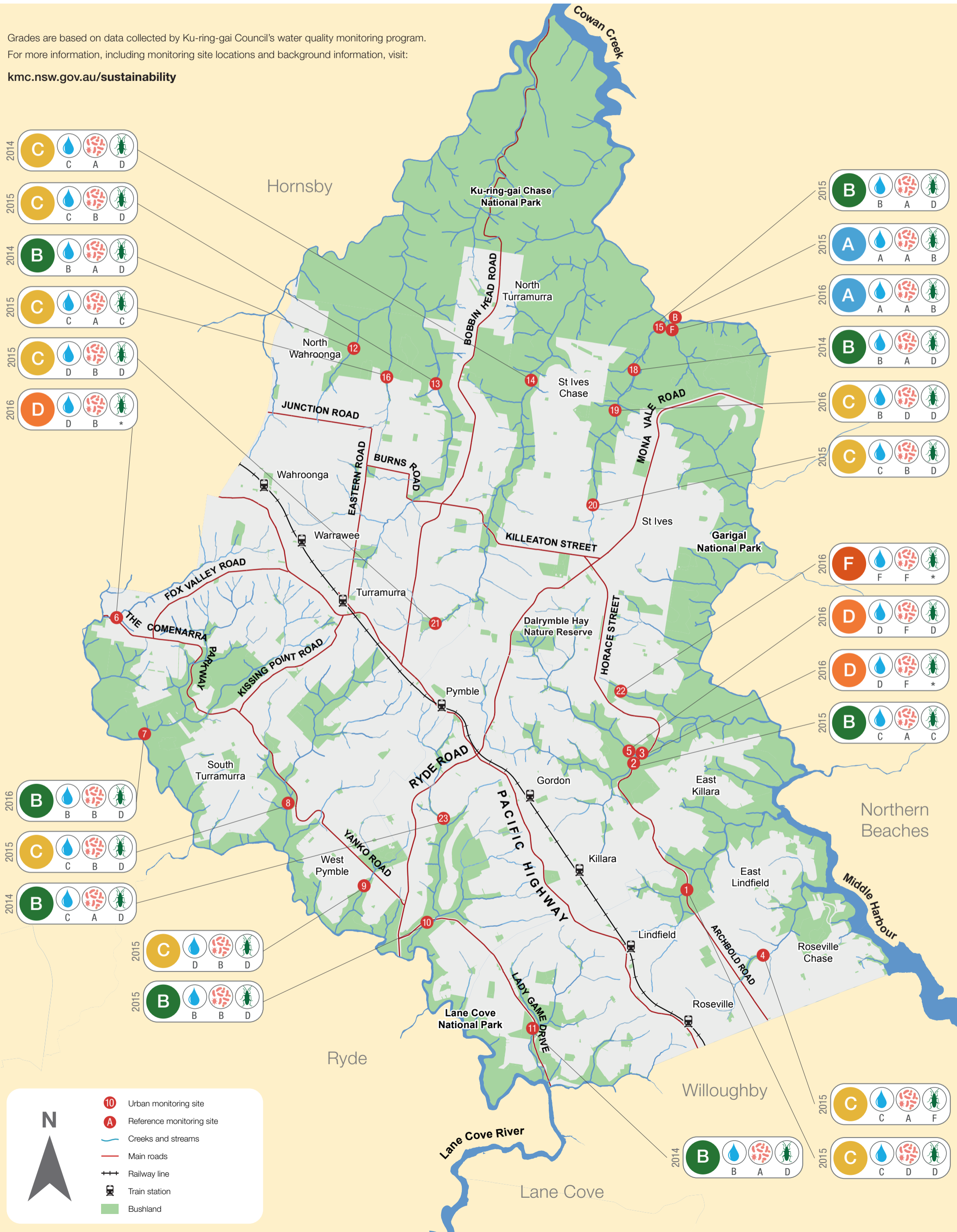
Waterway health grading

A	Excellent	Clean water and a healthy ecosystem
B	Good	Increasingly degraded water quality and ecosystems
C	Fair	
D	Poor	Very poor water quality and a severely impaired ecosystem
F	Fail	
*	n/a	Data not available due to poor conditions at time of sampling



Grades are based on data collected by Ku-ring-gai Council's water quality monitoring program. For more information, including monitoring site locations and background information, visit:

kmc.nsw.gov.au/sustainability



Legend:

- 10 Urban monitoring site
- A Reference monitoring site
- Creeks and streams
- Main roads
- Railway line
- Train station
- Bushland

WATER QUALITY REPORT CARD

AUTUMN 2017

Waterway health grading

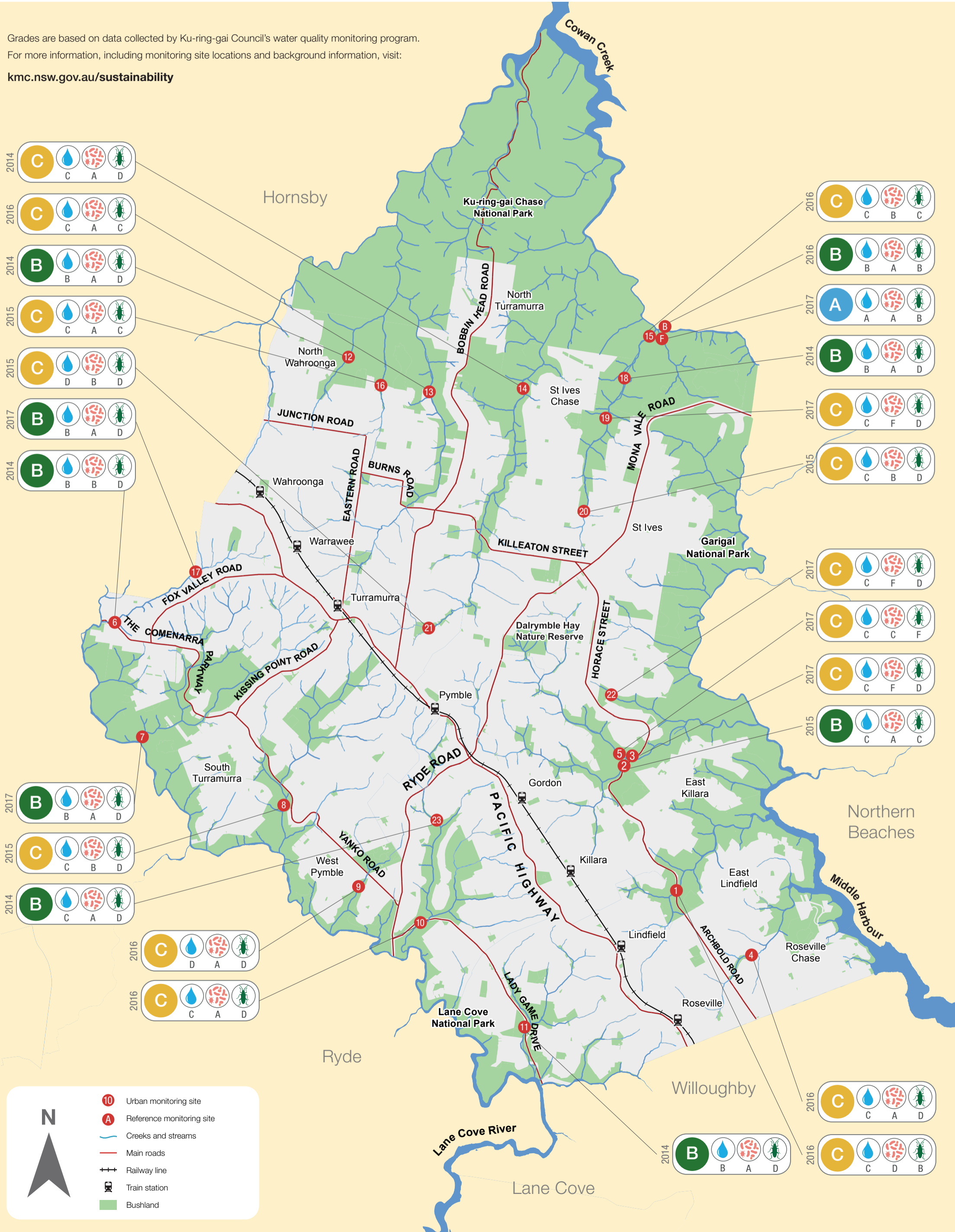
A	Excellent	Clean water and a healthy ecosystem
B	Good	Increasingly degraded water quality and ecosystems
C	Fair	
D	Poor	Very poor water quality and a severely impaired ecosystem
F	Fail	

Physical & chemical condition: A
 Bacterial contamination: A B A
 Water bugs (SIGNAL 2): A



Grades are based on data collected by Ku-ring-gai Council's water quality monitoring program.
 For more information, including monitoring site locations and background information, visit:

kmc.nsw.gov.au/sustainability



Legend

- Urban monitoring site (Red circle with number)
- Reference monitoring site (Red circle with letter)
- Creeks and streams (Blue line)
- Main roads (Red line)
- Railway line (Black line with cross-ticks)
- Train station (Black square with cross-ticks)
- Bushland (Green area)

WATER QUALITY REPORT CARD

SPRING 2017

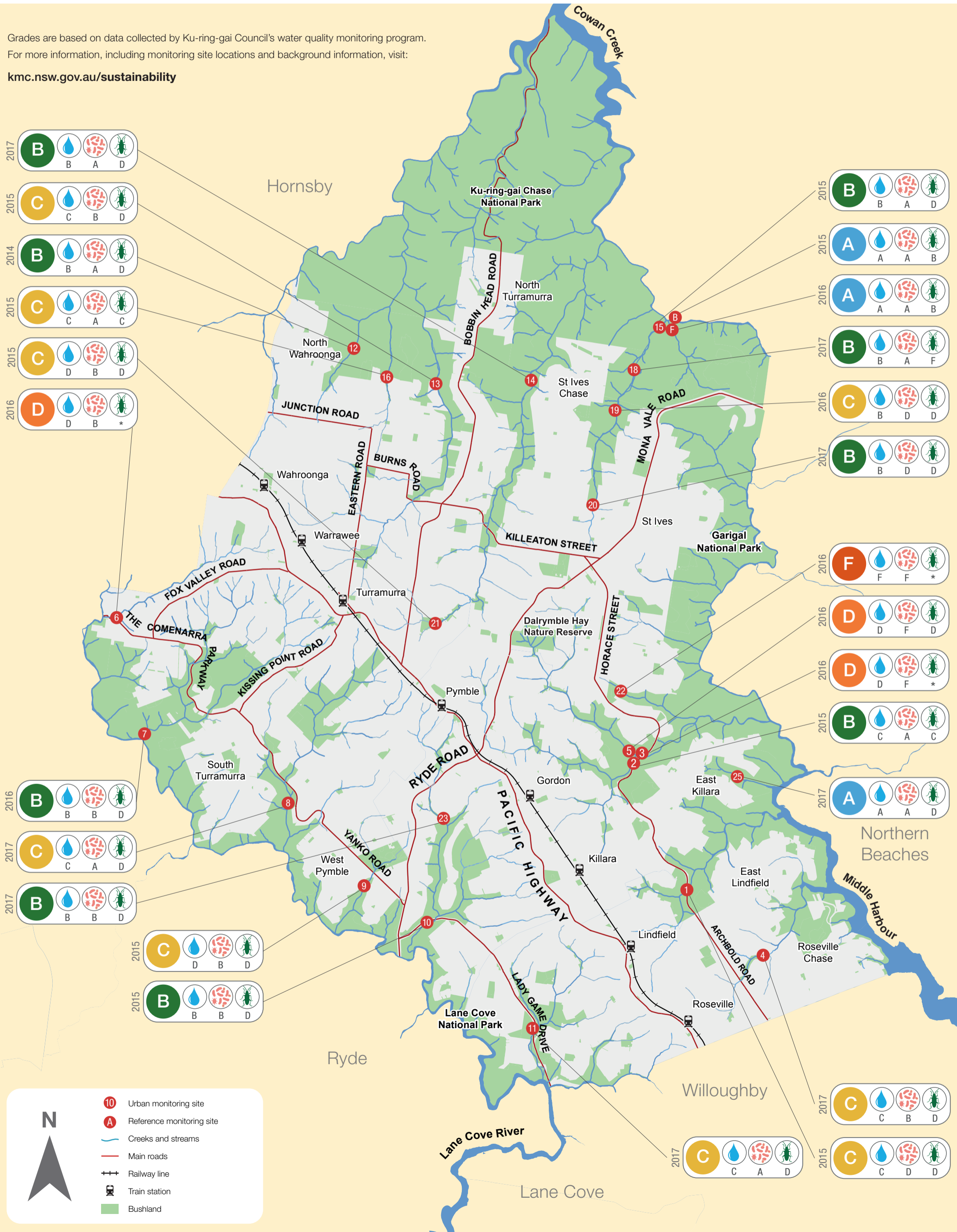
Waterway health grading

A	Excellent	Clean water and a healthy ecosystem
B	Good	Increasingly degraded water quality and ecosystems
C	Fair	
D	Poor	Very poor water quality and a severely impaired ecosystem
F	Fail	
*	n/a	Data not available due to poor conditions at time of sampling



Grades are based on data collected by Ku-ring-gai Council's water quality monitoring program. For more information, including monitoring site locations and background information, visit:

kmc.nsw.gov.au/sustainability



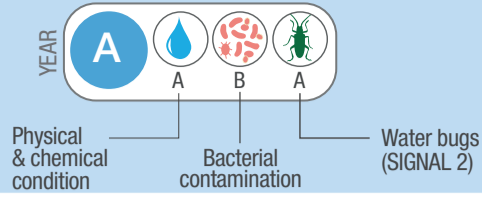
Legend:

- Urban monitoring site (Red circle with number)
- Reference monitoring site (Red circle with letter)
- Creeks and streams (Blue line)
- Main roads (Red line)
- Railway line (Black line with cross-ticks)
- Train station (Black square with cross-ticks)
- Bushland (Green area)

WATER QUALITY REPORT CARD

AUTUMN 2018

Waterway health grading

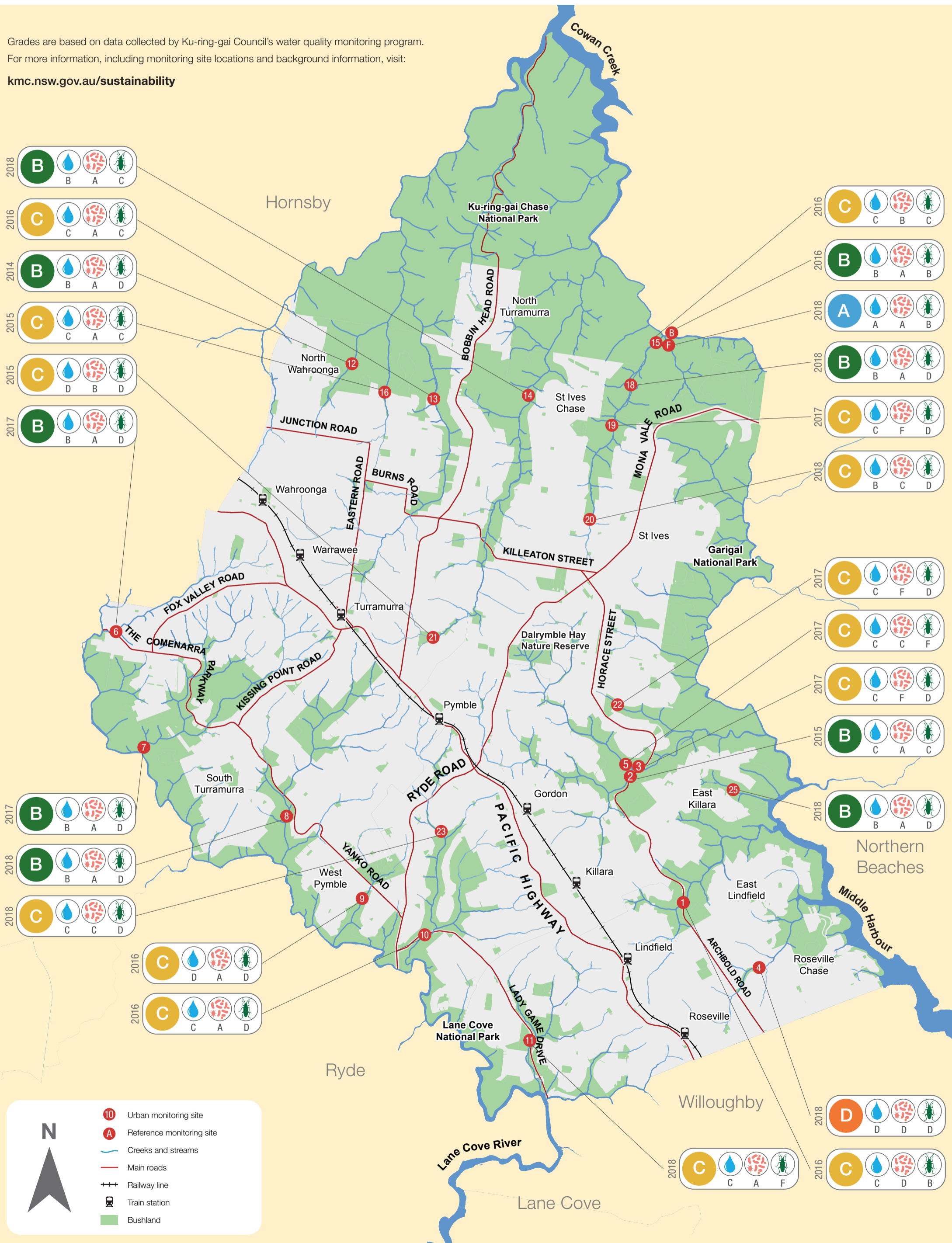


A	Excellent	Clean water and a healthy ecosystem
B	Good	Increasingly degraded water quality and ecosystems
C	Fair	
D	Poor	Very poor water quality and a severely impaired ecosystem
F	Fail	



Grades are based on data collected by Ku-ring-gai Council's water quality monitoring program.
 For more information, including monitoring site locations and background information, visit:

kmc.nsw.gov.au/sustainability



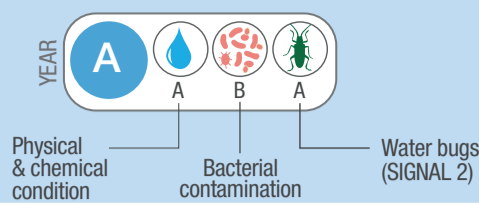
Legend:

- 10 Urban monitoring site
- A Reference monitoring site
- Creeks and streams
- Main roads
- Railway line
- Train station
- Bushland

WATER QUALITY REPORT CARD

SPRING 2018

Waterway health grading

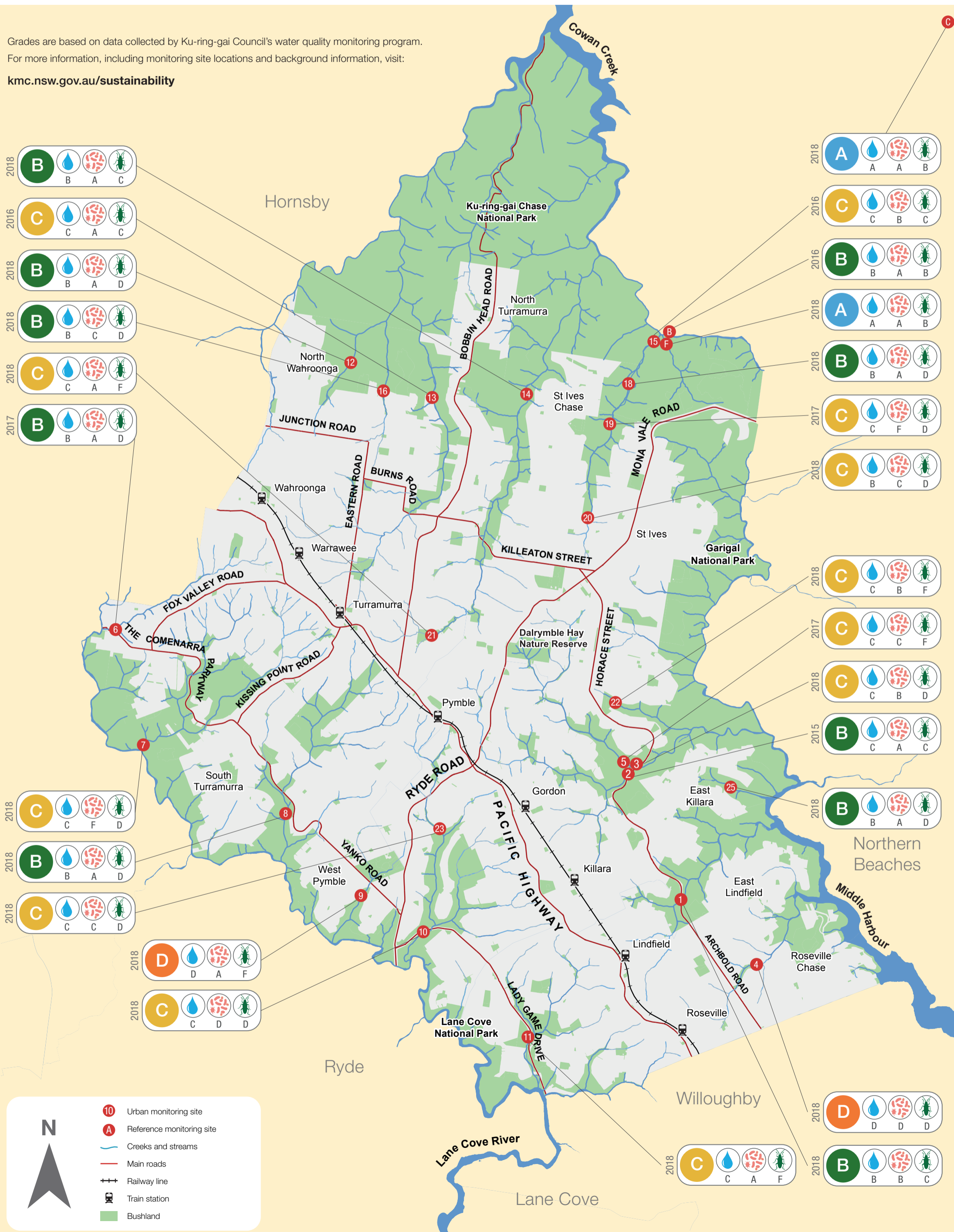


A	Excellent	Clean water and a healthy ecosystem
B	Good	Increasingly degraded water quality and ecosystems
C	Fair	
D	Poor	Very poor water quality and a severely impaired ecosystem
F	Fail	



Grades are based on data collected by Ku-ring-gai Council's water quality monitoring program.
For more information, including monitoring site locations and background information, visit:

kmc.nsw.gov.au/sustainability



2018 **B** (Water drop: B, Bacteria: A, Insect: C)

2016 **C** (Water drop: C, Bacteria: A, Insect: C)

2018 **B** (Water drop: B, Bacteria: A, Insect: D)

2018 **B** (Water drop: B, Bacteria: C, Insect: D)

2018 **C** (Water drop: C, Bacteria: A, Insect: F)

2017 **B** (Water drop: B, Bacteria: A, Insect: D)

2018 **A** (Water drop: A, Bacteria: A, Insect: B)

2016 **C** (Water drop: C, Bacteria: B, Insect: C)

2016 **B** (Water drop: B, Bacteria: A, Insect: B)

2018 **A** (Water drop: A, Bacteria: A, Insect: B)

2018 **B** (Water drop: B, Bacteria: A, Insect: D)

2017 **C** (Water drop: C, Bacteria: F, Insect: D)

2018 **C** (Water drop: B, Bacteria: C, Insect: D)

2018 **C** (Water drop: C, Bacteria: B, Insect: F)

2017 **C** (Water drop: C, Bacteria: C, Insect: F)

2018 **C** (Water drop: C, Bacteria: B, Insect: D)

2015 **B** (Water drop: C, Bacteria: A, Insect: C)

2018 **C** (Water drop: C, Bacteria: F, Insect: D)

2018 **B** (Water drop: B, Bacteria: A, Insect: D)

2018 **C** (Water drop: C, Bacteria: C, Insect: D)

2018 **D** (Water drop: D, Bacteria: A, Insect: F)

2018 **C** (Water drop: C, Bacteria: D, Insect: D)

2018 **B** (Water drop: B, Bacteria: A, Insect: D)

2018 **D** (Water drop: D, Bacteria: D, Insect: D)

2018 **C** (Water drop: C, Bacteria: A, Insect: F)

2018 **B** (Water drop: B, Bacteria: B, Insect: C)

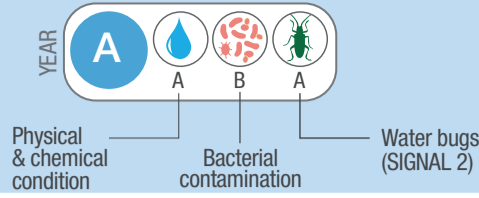
N

- Urban monitoring site
- Reference monitoring site
- Creeks and streams
- Main roads
- Railway line
- Train station
- Bushland

WATER QUALITY REPORT CARD

SPRING 2019

Waterway health grading



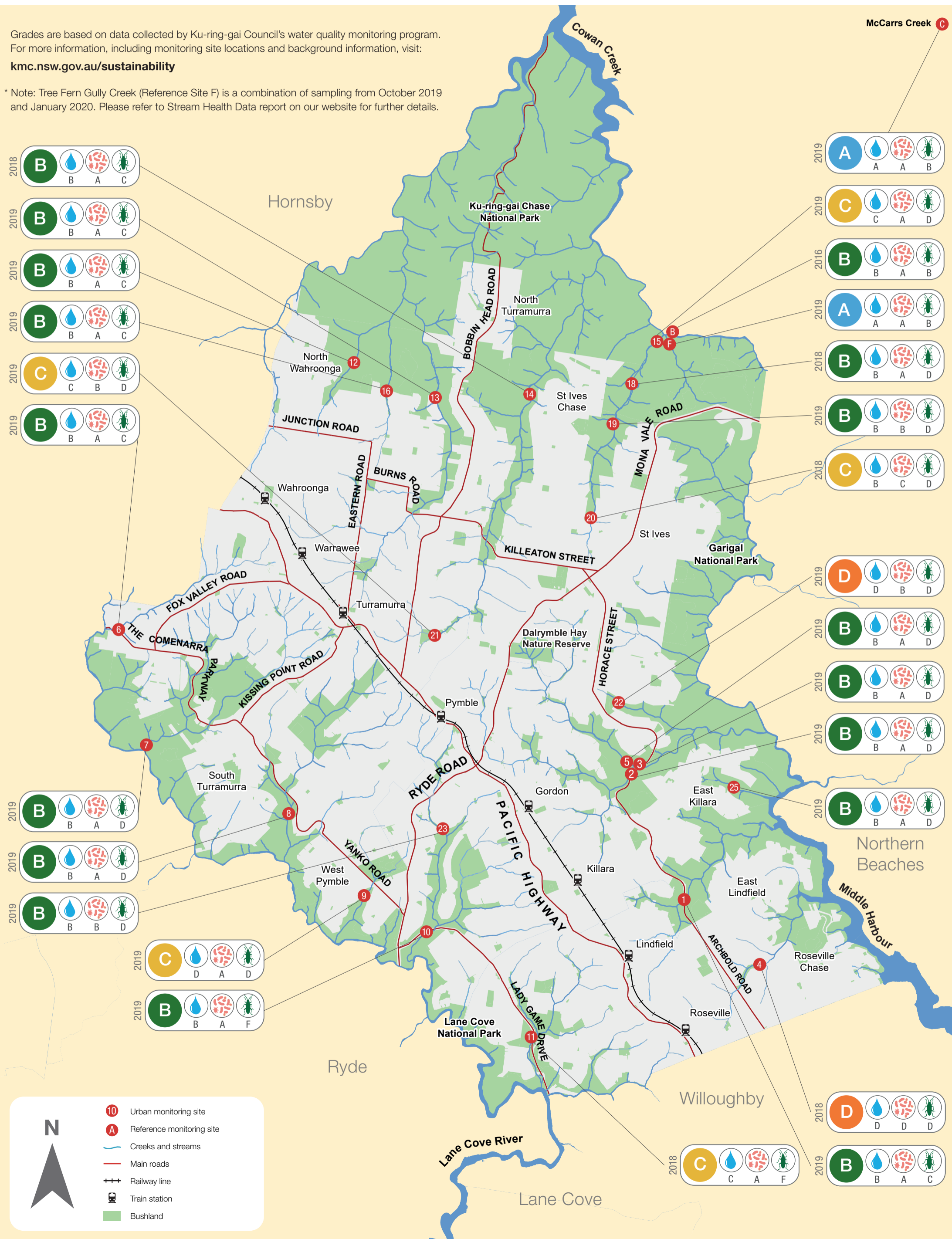
A	Excellent	Clean water and a healthy ecosystem
B	Good	
C	Fair	Increasingly degraded water quality and ecosystems
D	Poor	
F	Fail	Very poor water quality and a severely impaired ecosystem



Grades are based on data collected by Ku-ring-gai Council's water quality monitoring program. For more information, including monitoring site locations and background information, visit:

kmc.nsw.gov.au/sustainability

* Note: Tree Fern Gully Creek (Reference Site F) is a combination of sampling from October 2019 and January 2020. Please refer to Stream Health Data report on our website for further details.



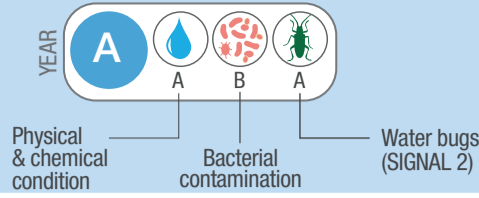
- 10 Urban monitoring site
- A Reference monitoring site
- Creeks and streams
- Main roads
- Railway line
- Train station
- Bushland



WATER QUALITY REPORT CARD

AUTUMN 2020

Waterway health grading



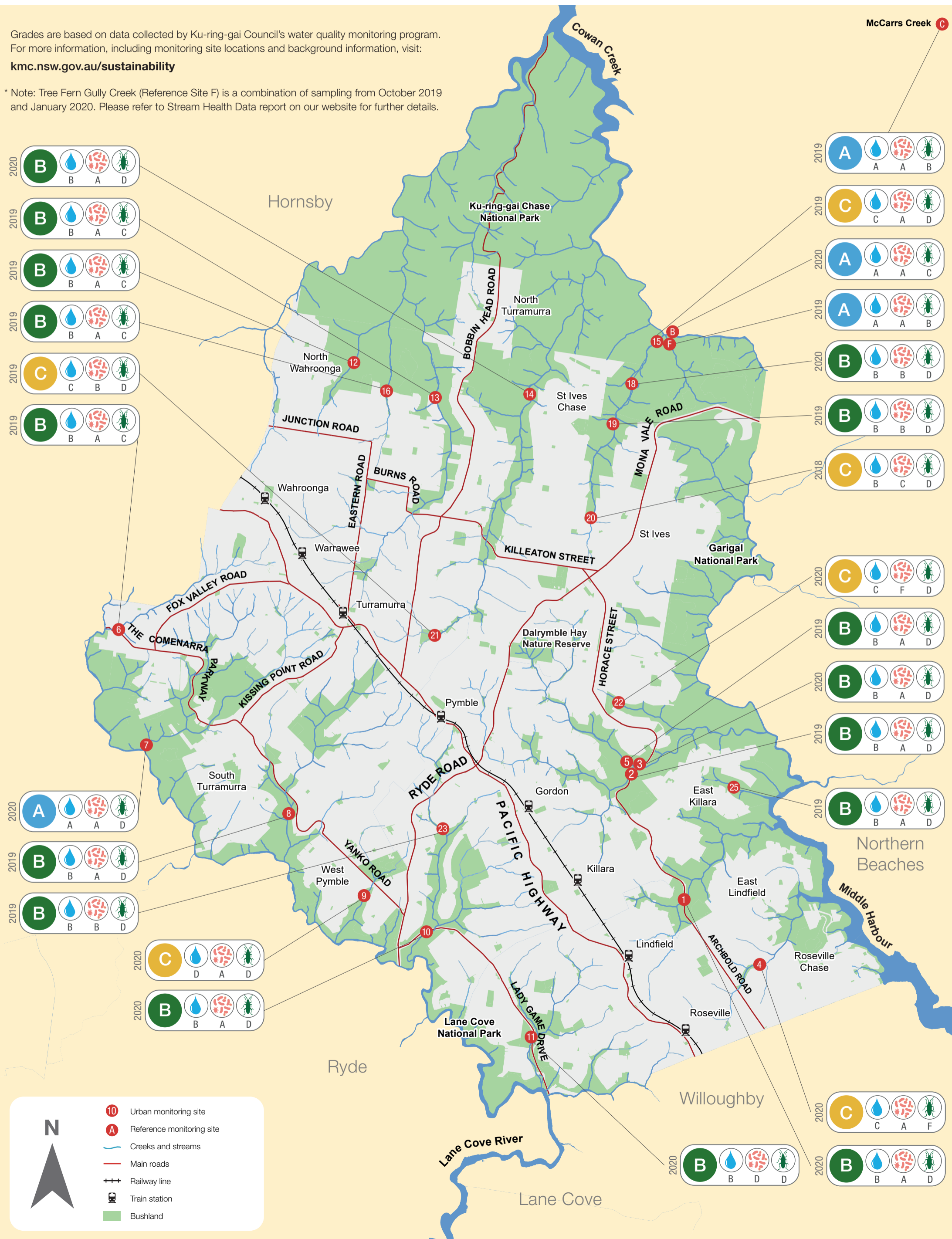
A	Excellent	Clean water and a healthy ecosystem
B	Good	
C	Fair	Increasingly degraded water quality and ecosystems
D	Poor	
F	Fail	Very poor water quality and a severely impaired ecosystem



Grades are based on data collected by Ku-ring-gai Council's water quality monitoring program. For more information, including monitoring site locations and background information, visit:

kmc.nsw.gov.au/sustainability

* Note: Tree Fern Gully Creek (Reference Site F) is a combination of sampling from October 2019 and January 2020. Please refer to Stream Health Data report on our website for further details.



Legend:

- Urban monitoring site (Red circle with number)
- Reference monitoring site (Red circle with letter)
- Creeks and streams (Blue line)
- Main roads (Red line)
- Railway line (Black line with cross-ticks)
- Train station (Black square with cross-ticks)
- Bushland (Green area)

WATER QUALITY REPORT CARD

SPRING 2021

Waterway health grading

A	Excellent	Clean water and a healthy ecosystem
B	Good	Increasingly degraded water quality and ecosystems
C	Fair	
D	Poor	Very poor water quality and a severely impaired ecosystem
F	Fail	

YEAR

Physical & chemical condition

Bacterial contamination

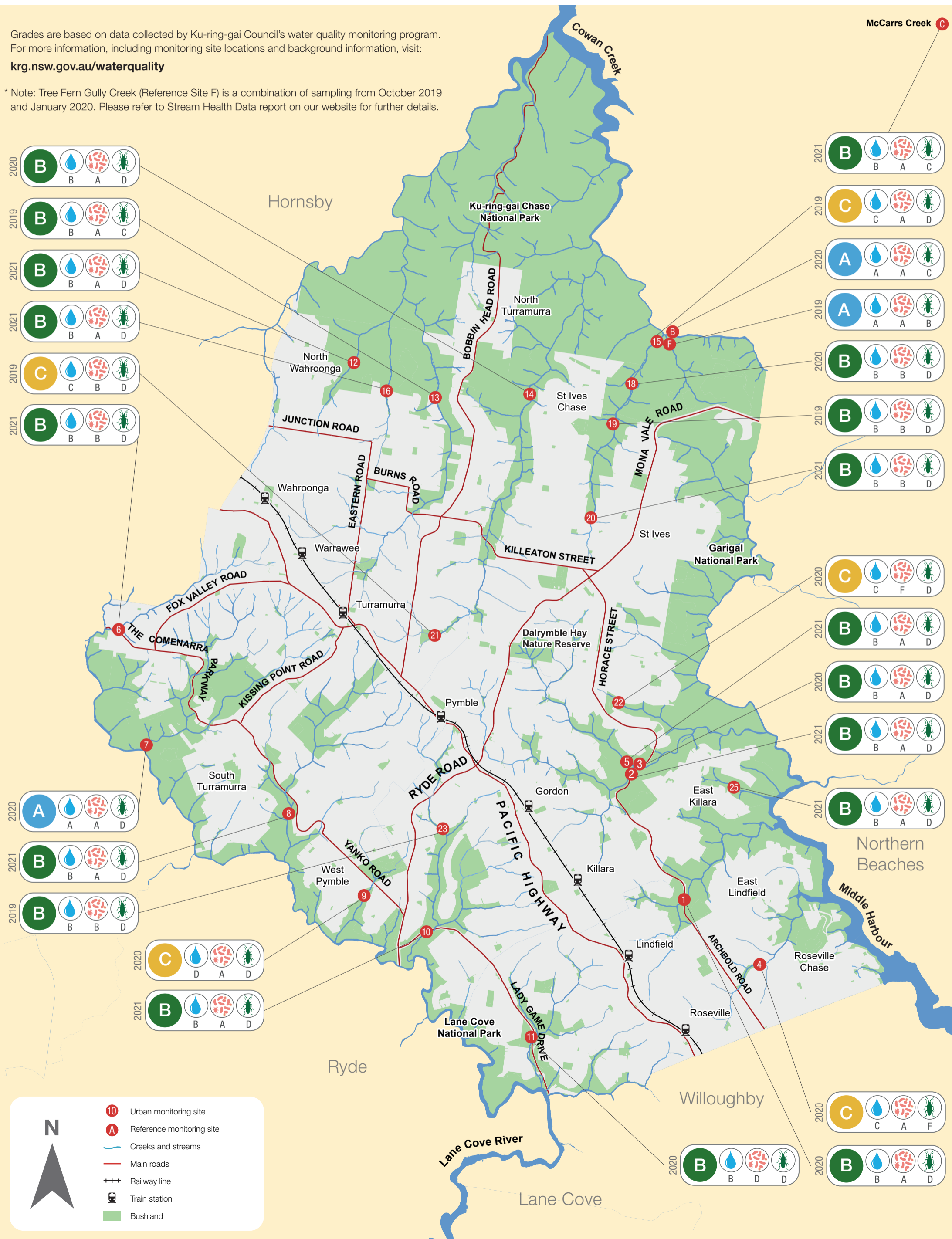
Water bugs (SIGNAL 2)



Grades are based on data collected by Ku-ring-gai Council's water quality monitoring program. For more information, including monitoring site locations and background information, visit:

krg.nsw.gov.au/waterquality

* Note: Tree Fern Gully Creek (Reference Site F) is a combination of sampling from October 2019 and January 2020. Please refer to Stream Health Data report on our website for further details.



Legend:

- Urban monitoring site (Red circle with number)
- Reference monitoring site (Red circle with letter)
- Creeks and streams (Blue line)
- Main roads (Red line)
- Railway line (Black line with cross-ticks)
- Train station (Black square with cross-ticks)
- Bushland (Green area)