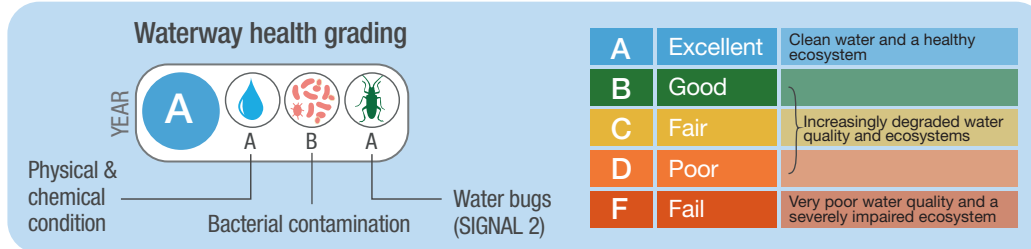


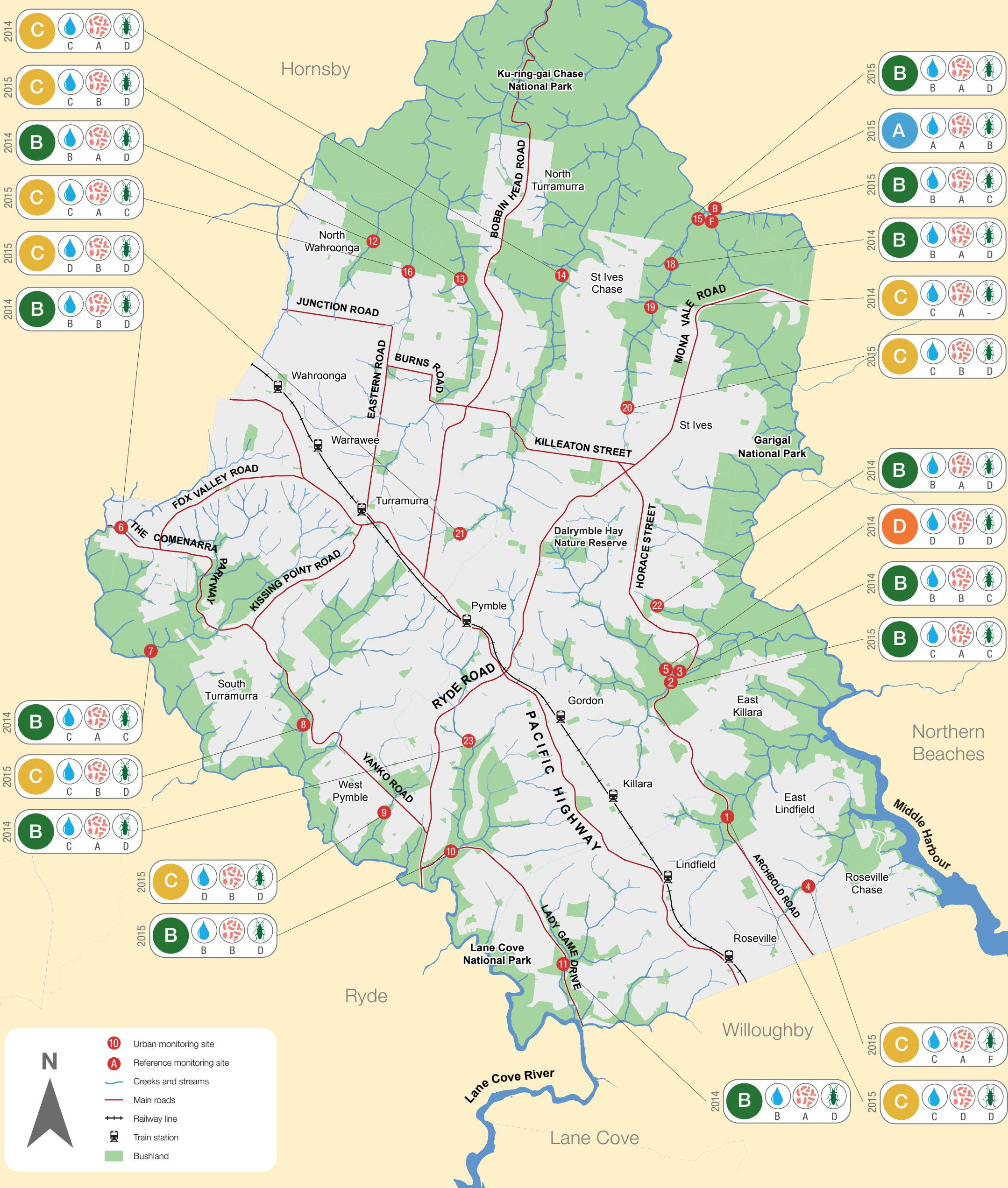
WATER QUALITY REPORT CARD

SPRING 2015



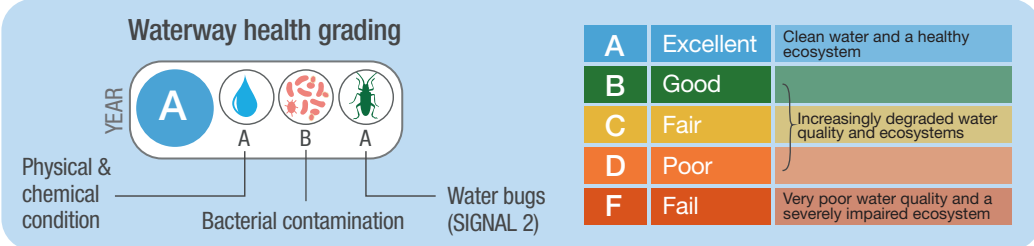
Grades are based on data collected by Ku-ring-gai Council's water quality monitoring program.
For more information, including monitoring site locations and background information, visit:

kmc.nsw.gov.au/sustainability



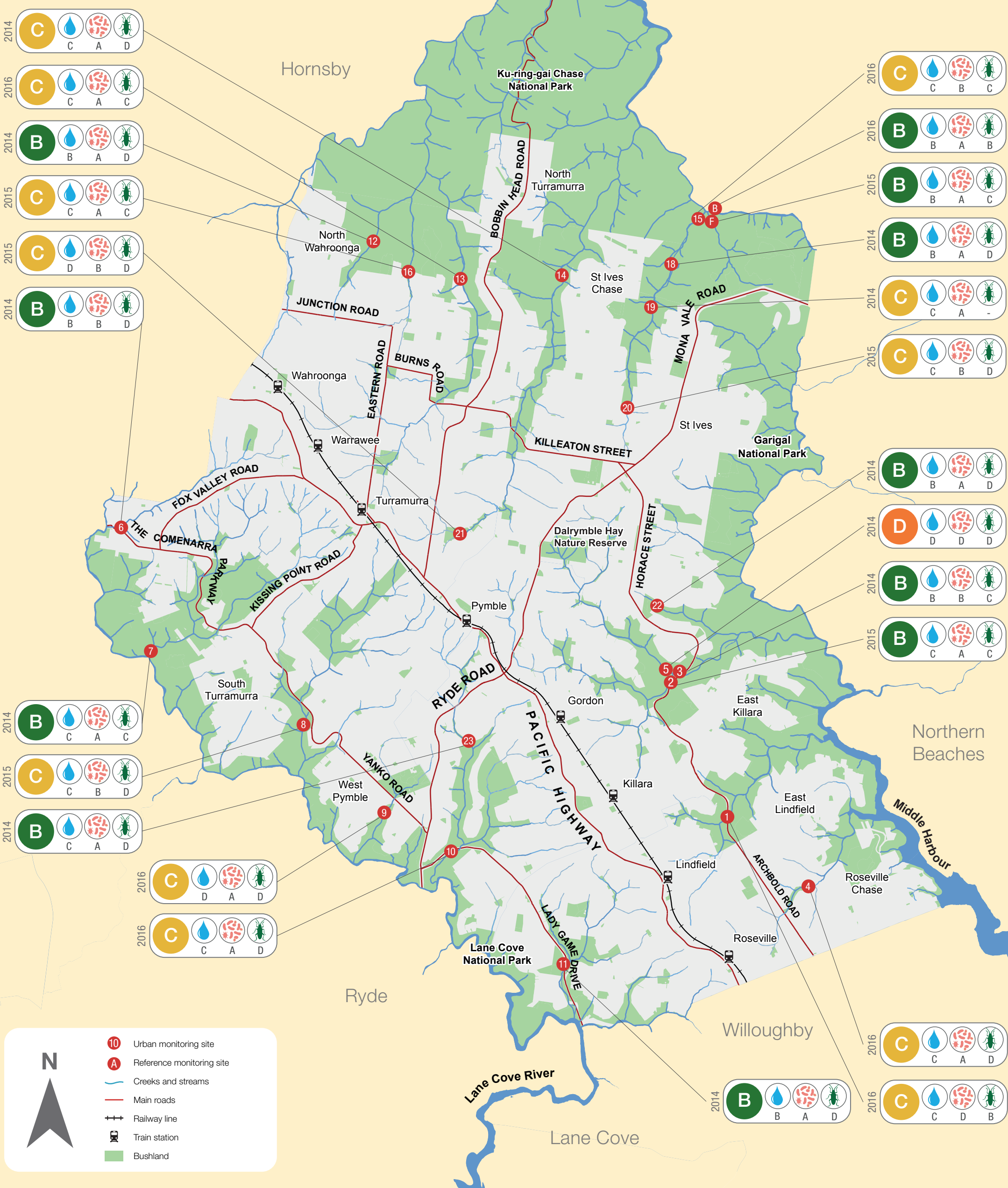
WATER QUALITY REPORT CARD

AUTUMN 2016



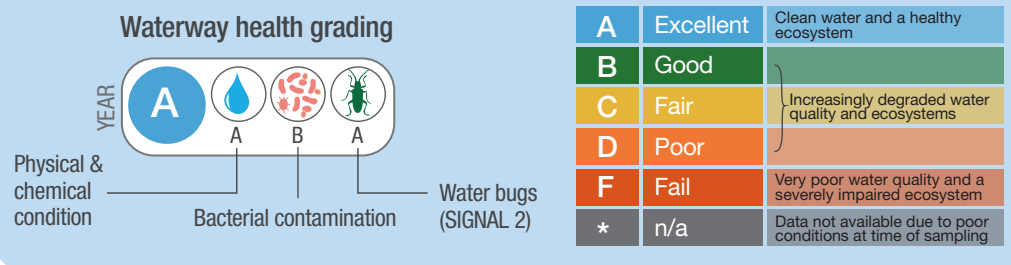
Grades are based on data collected by Ku-ring-gai Council's water quality monitoring program.
For more information, including monitoring site locations and background information, visit:

kmc.nsw.gov.au/sustainability



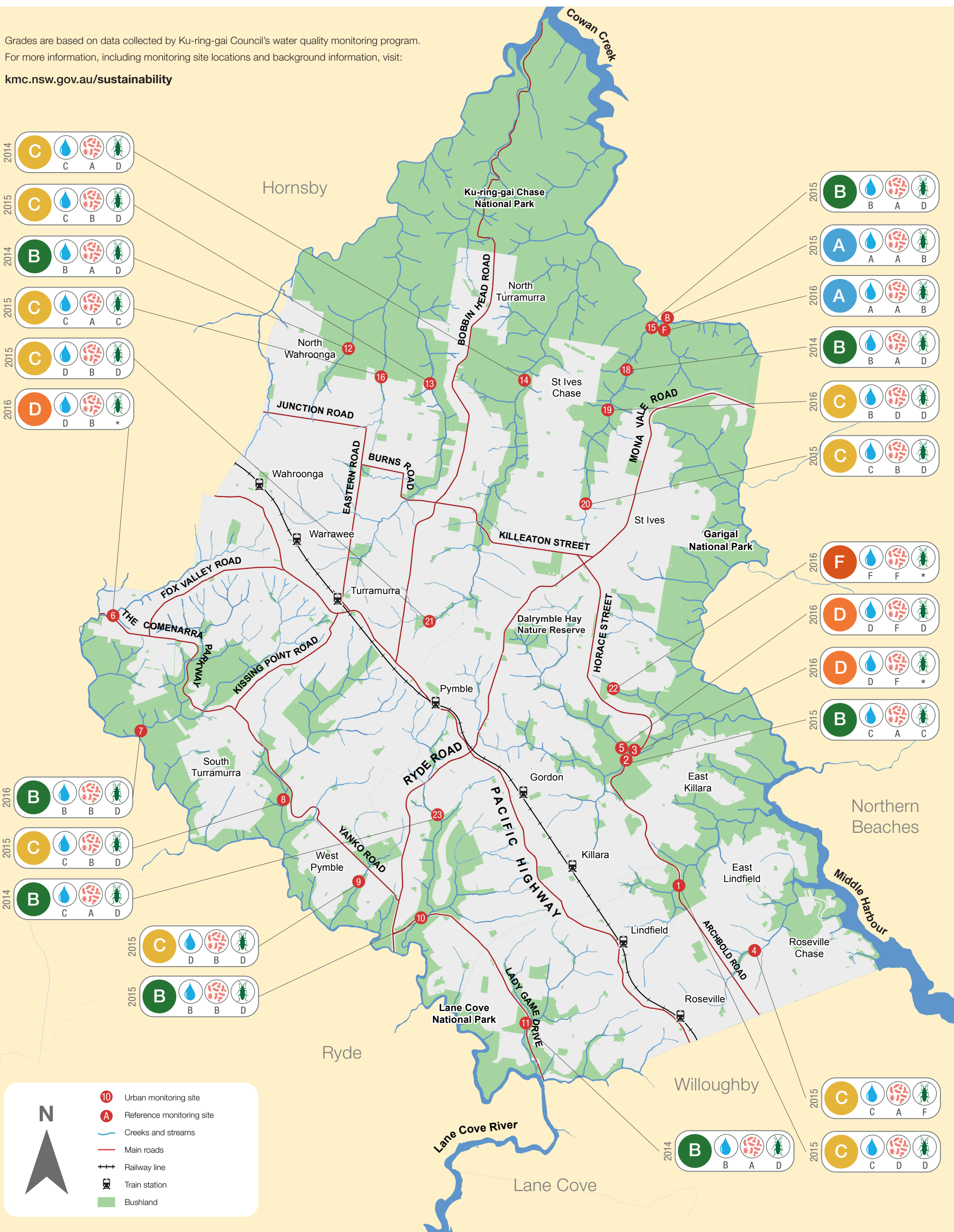
WATER QUALITY REPORT CARD

SPRING 2016



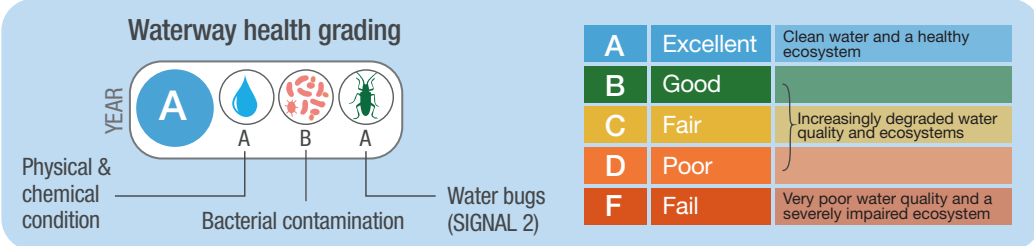
Grades are based on data collected by Ku-ring-gai Council's water quality monitoring program.
For more information, including monitoring site locations and background information, visit:

kmc.nsw.gov.au/sustainability



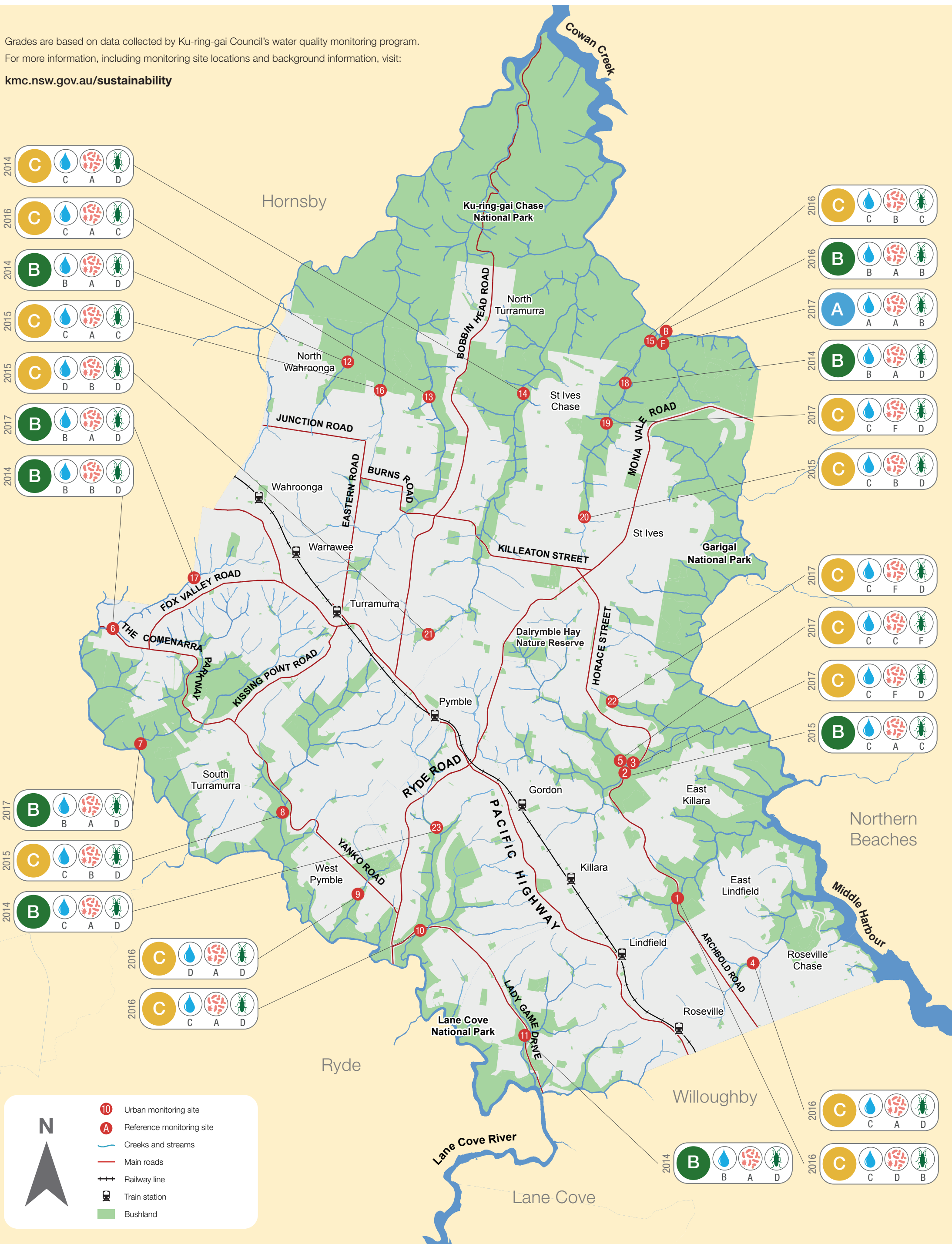
WATER QUALITY REPORT CARD

AUTUMN 2017



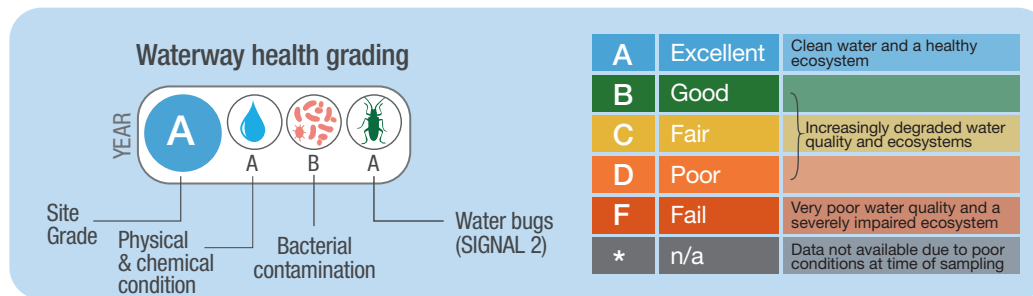
Grades are based on data collected by Ku-ring-gai Council's water quality monitoring program.
For more information, including monitoring site locations and background information, visit:

kmc.nsw.gov.au/sustainability



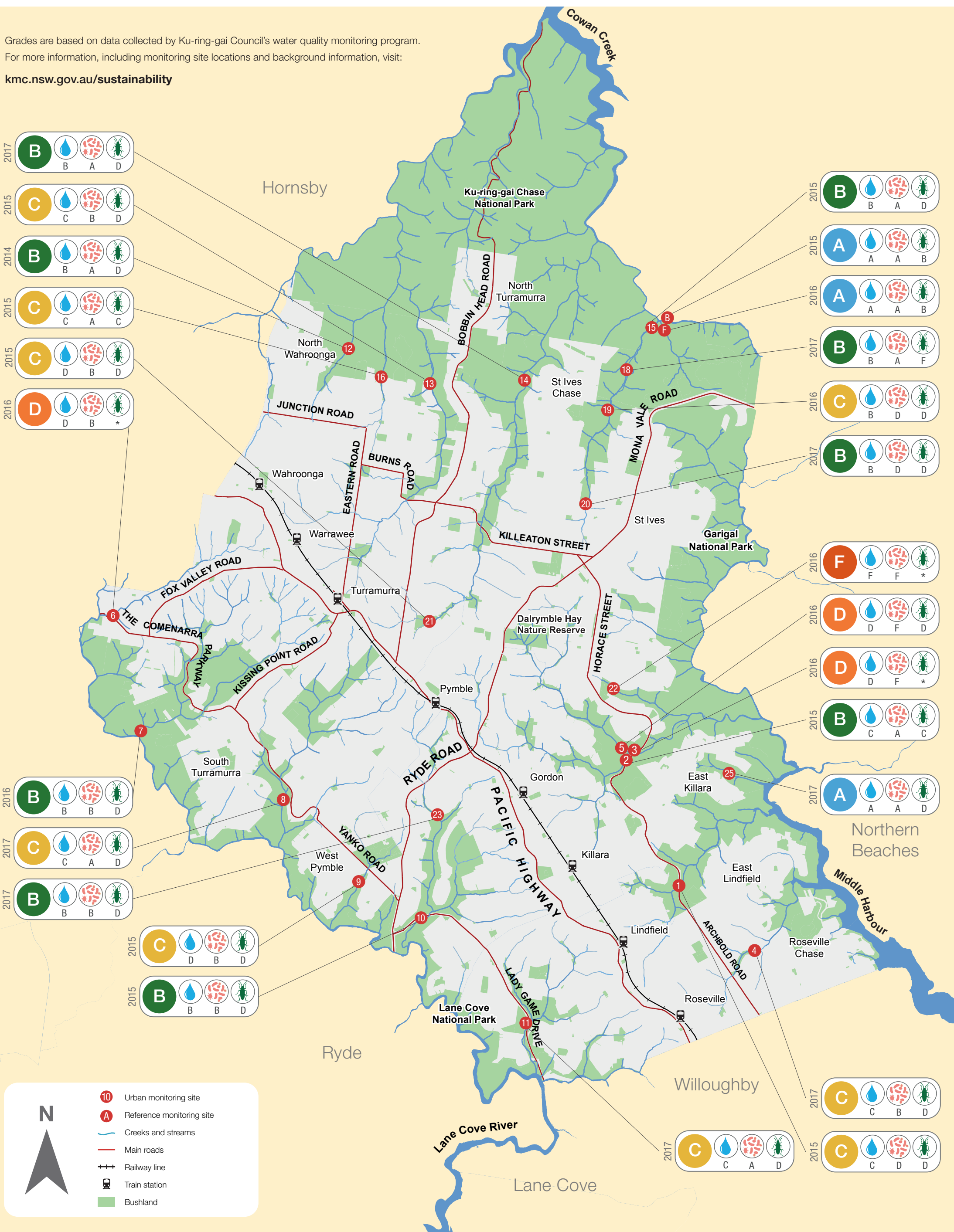
WATER QUALITY REPORT CARD

SPRING 2017

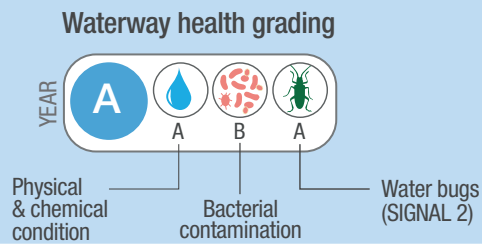


Grades are based on data collected by Ku-ring-gai Council's water quality monitoring program.
For more information, including monitoring site locations and background information, visit:

kmc.nsw.gov.au/sustainability



WATER QUALITY REPORT CARD AUTUMN 2018



A	Excellent	Clean water and a healthy ecosystem
B	Good	
C	Fair	} Increasingly degraded water quality and ecosystems
D	Poor	
F	Fail	Very poor water quality and a severely impaired ecosystem

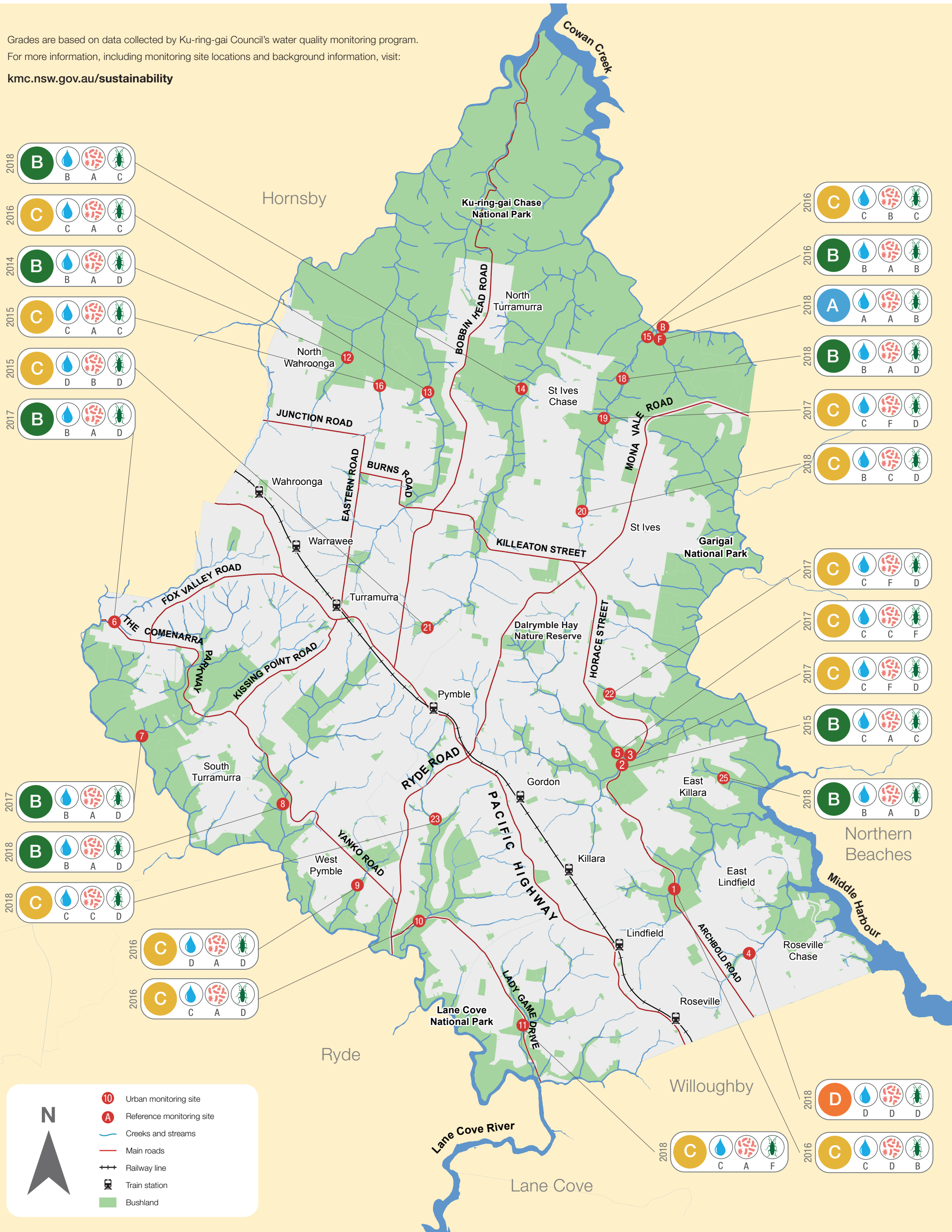


**LOVING
LIVING
KU-RING-GAI**
Sustaining Sydney's green heart



Grades are based on data collected by Ku-ring-gai Council's water quality monitoring program. For more information, including monitoring site locations and background information, visit:

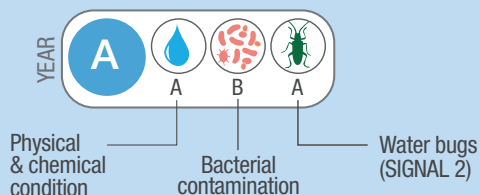
kmc.nsw.gov.au/sustainability



WATER QUALITY REPORT CARD

SPRING 2018

Waterway health grading



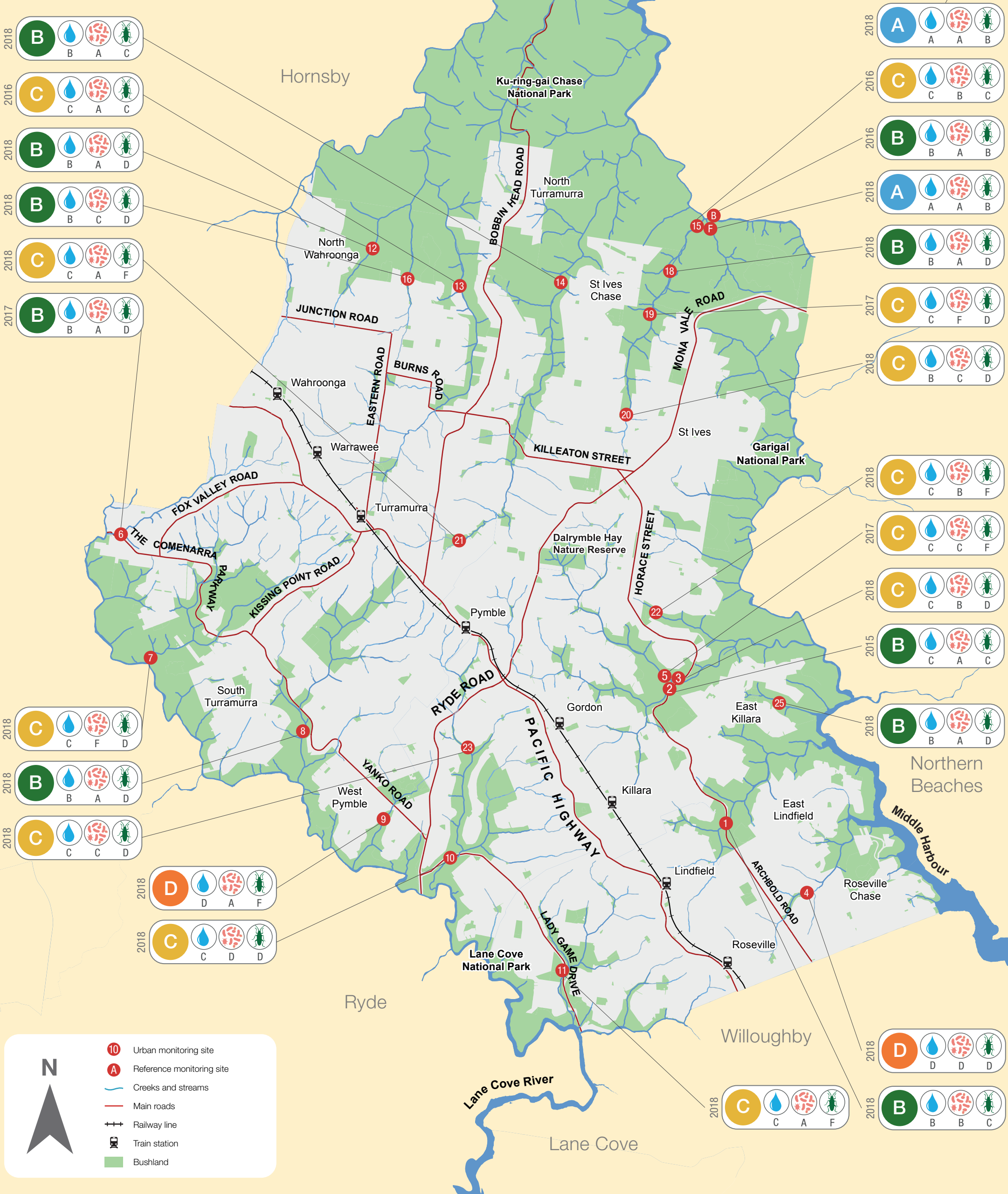
A	Excellent	Clean water and a healthy ecosystem
B	Good	
C	Fair	Increasingly degraded water quality and ecosystems
D	Poor	
F	Fail	Very poor water quality and a severely impaired ecosystem

LOVING LIVING
KU-RING-GAI
Sustaining Sydney's green heart



Grades are based on data collected by Ku-ring-gai Council's water quality monitoring program.
For more information, including monitoring site locations and background information, visit:

kmc.nsw.gov.au/sustainability



WATER QUALITY REPORT CARD

SPRING 2019

Waterway health grading

YEAR

Physical & chemical condition

Bacterial contamination

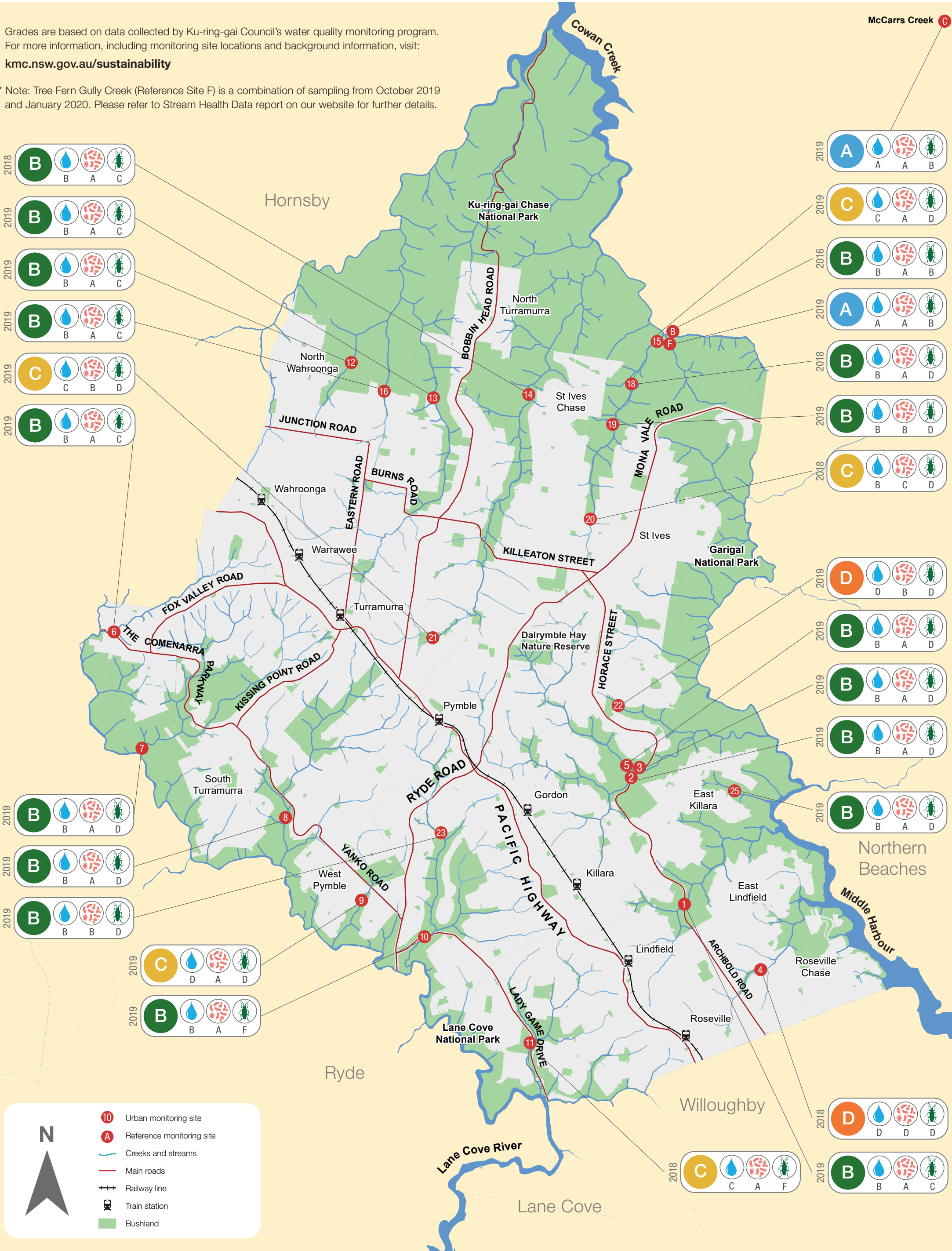
Water bugs (SIGNAL 2)

A	Excellent	Clean water and a healthy ecosystem
B	Good	
C	Fair	Increasingly degraded water quality and ecosystems
D	Poor	
F	Fail	Very poor water quality and a severely impaired ecosystem



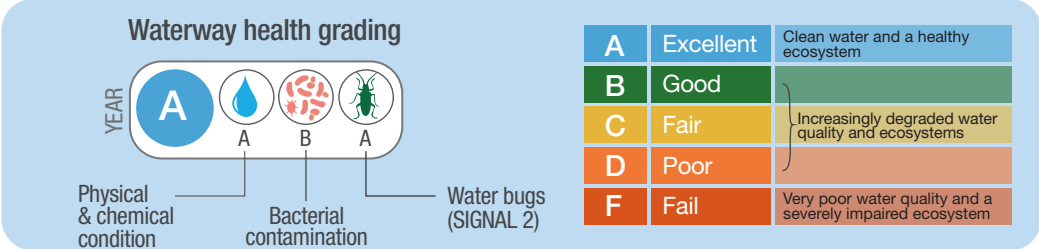
Grades are based on data collected by Ku-ring-gai Council's water quality monitoring program. For more information, including monitoring site locations and background information, visit: kmc.nsw.gov.au/sustainability

* Note: Tree Fern Gully Creek (Reference Site F) is a combination of sampling from October 2019 and January 2020. Please refer to Stream Health Data report on our website for further details.



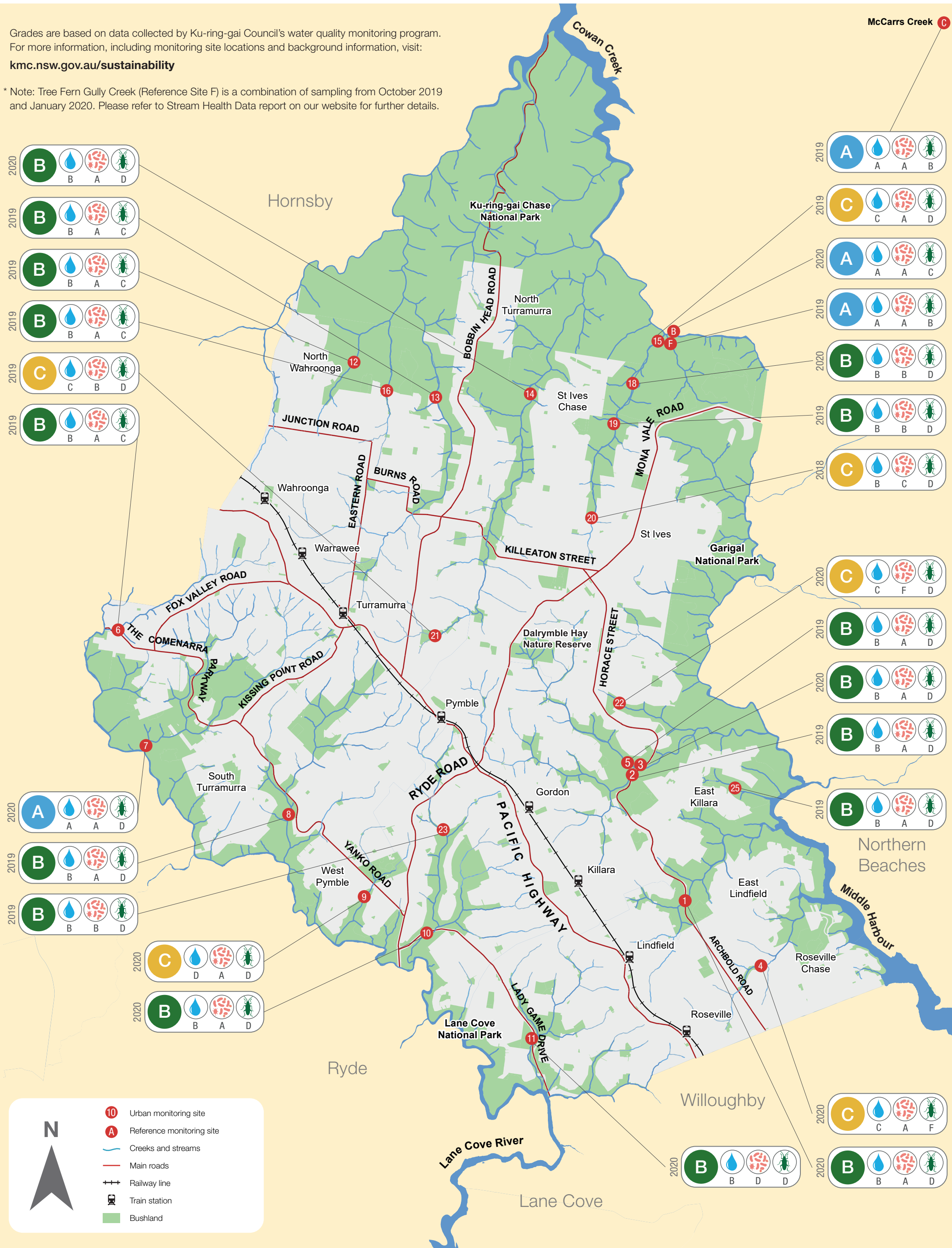
WATER QUALITY REPORT CARD

AUTUMN 2020



Grades are based on data collected by Ku-ring-gai Council's water quality monitoring program. For more information, including monitoring site locations and background information, visit: kmc.nsw.gov.au/sustainability

* Note: Tree Fern Gully Creek (Reference Site F) is a combination of sampling from October 2019 and January 2020. Please refer to Stream Health Data report on our website for further details.



WATER QUALITY REPORT CARD

SPRING 2021

Waterway health grading

YEAR

Physical & chemical condition

Bacterial contamination

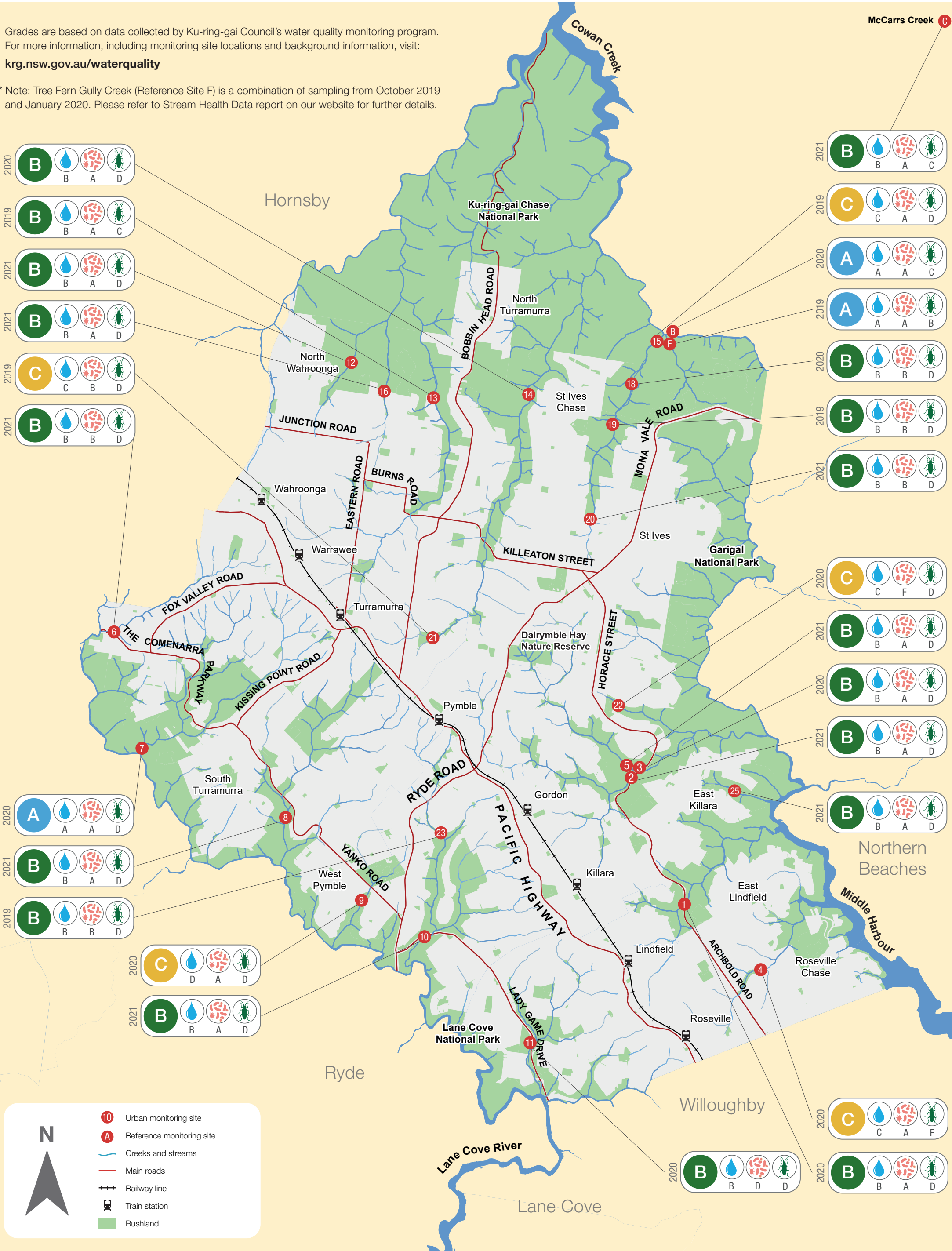
Water bugs (SIGNAL 2)

A	Excellent	Clean water and a healthy ecosystem
B	Good	
C	Fair	Increasingly degraded water quality and ecosystems
D	Poor	
F	Fail	Very poor water quality and a severely impaired ecosystem



Grades are based on data collected by Ku-ring-gai Council's water quality monitoring program. For more information, including monitoring site locations and background information, visit: krg.nsw.gov.au/waterquality

* Note: Tree Fern Gully Creek (Reference Site F) is a combination of sampling from October 2019 and January 2020. Please refer to Stream Health Data report on our website for further details.



WATER QUALITY REPORT CARD

SPRING 2023

Waterway health grading

YEAR

Physical & chemical condition

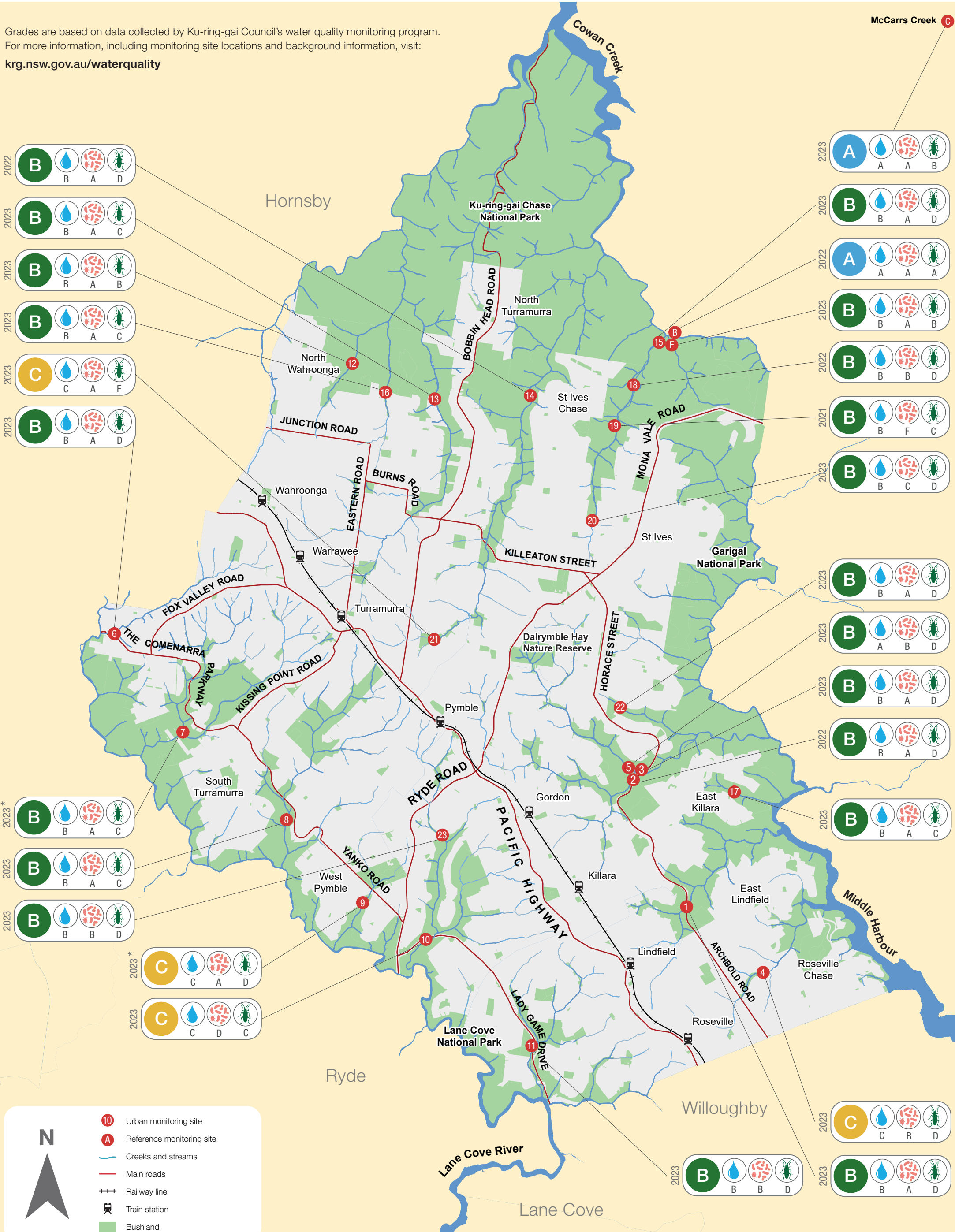
Bacterial contamination

Water bugs (SIGNAL 2)

A	Excellent	Clean water and a healthy ecosystem
B	Good	
C	Fair	Increasingly degraded water quality and ecosystems
D	Poor	
F	Fail	Very poor water quality and a severely impaired ecosystem



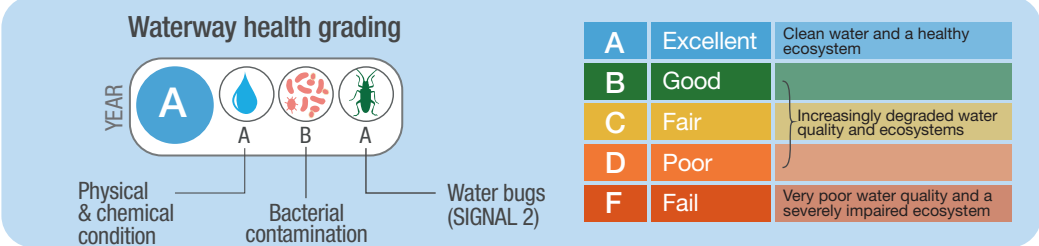
Grades are based on data collected by Ku-ring-gai Council's water quality monitoring program.
For more information, including monitoring site locations and background information, visit:
krg.nsw.gov.au/waterquality



* All sites sampled in spring 2023 have been updated with lab turbidity data resulting in overall grade changes for sites 7 and 9

WATER QUALITY REPORT CARD

AUTUMN 2023



Grades are based on data collected by Ku-ring-gai Council's water quality monitoring program.
For more information, including monitoring site locations and background information, visit:
krg.nsw.gov.au/waterquality

