



# **Sir David Martin Reserve Landscape Master Plan**

**Adopted 13 November 2007**

# CONTENTS

	Page
Consultation activities	1
Sense of place	2
▪ Community vision	2
▪ Site identity	2
Ecology	4
Access and circulation	5
Parking and traffic	6
Community	8
▪ Passive recreation	8
▪ Active recreation	10
▪ Youth activities	11
▪ Sports clubs	12
Sportsfield options	14
Landscape Concept Plan Drawing	16
Appendix A	
▪ Stage 1 consultation findings (worksheet responses)	
Appendix B	
▪ Site analysis and design considerations	

# CONSULTATION ACTIVITIES

## MASTER PLAN PROCESS

Identify key issues with the community and stakeholders

Develop a Draft Landscape Master Plan

← We are here!

Refine Draft Master Plan and adopt by Council

Master Plan to be implemented in stages



## STAGE 1 CONSULTATION

to identify key issues

### *Consultation*

- Community workshop held 27 September, 2006
- Staffed display/site meeting at Kissing Point Village Green 29 and 30 September, 2006
- Spring Regional Sports Forum presentation 23 August 2006
- Interviews with staff from Turramurra High School and Turramurra Public School.

### *Responses*

37 worksheets and email responses plus Kissing Point Sports Club's responses on behalf of their 1,500 members.

### *The main activities undertaken at the Reserve*

- Organised sport: soccer, cricket, softball, baseball
- Children's playground and junior cycle track
- Socialising at Kissing Point Village Green
- Dogs: off-leash area and exercising
- Walking



Sports groups use the Reserve for competitive sport on weekends, team training weeknights, occasionally for special sport development days, social/community functions. Members also use the Reserve for jogging, walking and other impromptu activities such as picnics.

Schools use the fields weekly for sport, as well as gala days and annual sports carnivals.

See Appendix A – Completed Worksheets

## STAGE 2 CONSULTATION

to gain direction for refining concepts

The Draft Landscape Master Plan for Sir David Martin Reserve was based on the above consultation with the community. Community input was considered in the preparation of the final Landscape Master Plan.

# SENSE OF PLACE: COMMUNITY VISION

## What you told us

### What you value

- **Local character:** “Quiet ambience.” “Pleasant place.” “Casual, informal character, clear of motor vehicle pollution.”
- **Bushland:** “Wild, rustic.” “Bush ambience.” “Sense of being in the bush.” “Nature and space in the suburbs.” “Access to bushland.”
- **Open space:** “Space for playing with children.” “Walking across the ovals and seeing how big the Aussie sky is.”
- **Large open space areas:** “Flexibility of use, location, community feel and sense of ownership ... the focus of the Reserve as a place of community interaction, given the location of the shops are nearby, is extremely important.”

### What you would not like

- **Destruction of bushland:** “More cleared areas for passive recreation.” “Youth 'hang-out' in bushland - damaging bush.”

### Your vision

- **The Reserve to remain relatively unchanged:** “Kept clean and tidy.” “Not too much development.” “Casual, community feel.” “Don’t light up bush areas at the risk of disturbing native animals.”
- **Bushland protected and enhanced:** “Nature reserve with bushland protected and enhanced for passive recreation.” “Flannel flowers and Christmas Bells exist to the east.” “Remove weeds and plant indigenous.” “Remove dead timber in the freeway corridor.” “More native trees.” “Trees for shade.”

## Council’s response

Enhance local character, bushland and open space:

- Replant Duffys Forest vegetation particularly around boundaries to provide continuous and more integrated landscape character.
- New structures, such as buildings and activity areas, to occur in existing building zones and developed areas to complement the landscape.
- Plant additional trees to screen structures and provide shade..
- Council seeks to extend the park over time to provide additional opportunities for passive recreation and ecological conservation, consistent with its status as a District Park.





# SENSE OF PLACE: SITE IDENTITY

## Furnishings and accessories to compliment the existing character of the Reserve

All furniture to be accessible such as picnic tables and bubblers.



Seating to match existing with good back support and arm rests.



Source: "Town and Park Furniture"

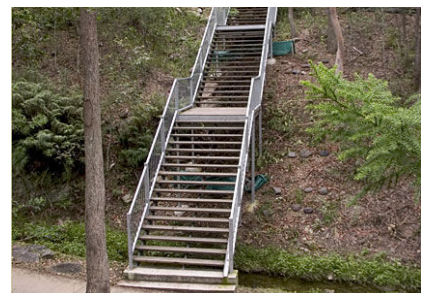
Opportunity for public art to highlight the unique properties of site, such as sculpture of the native plants and animals. This echidna is by Ishi Buki



Fencing to match existing at Kissing Point Village Green.



Steps in bushland, where necessary, to be either timber or sandstone.



Source: steps at Palm Beach light house

Source: 'Landmark'

# ECOLOGY

## Masterplanning principles . . .

### Integrate sustainable principles into park design

- Reuse, recycle and reduce waste
- Manage off-site impacts such as noxious weeds and encroachments
- Biodiversity conservation:
  - Protect and enhance native plants and habitat
  - Provide corridors to link bushland areas
- Incorporate water sensitive urban design principles

### What you told us

#### What you would not like

- **Destruction, or negative impacts on bushland:** "Insufficient management." "Weeds." "More cleared areas for passive recreation." "Youth 'hang-out' in bushland - damaging bush."
- **Poor drainage:** "Muddy surrounds of the baseball ground, boggy areas." "Poor drainage areas near cricket nets."
- **Rubbish, litter:** "Not enough bins." "Not enough bins in park or the dog off-leash area." "Bins overflow on weekends." "Alcohol bottles."

#### Your vision

- **Sustainable principles**
- **Environmental studies of bushland (school expressed an interest).**
- **Bushland protected and enhanced**
- **Support for water recycling project**

### Council's response

- Prepare timetable and action plan to implement adopted 'Plan of Management' for bushland on this site.
- Plants to be Duffys Forest species where possible, otherwise native plants.
- Provide fencing where required to protect bushland.
- Provide bushland corridors and additional shade.
- Harvest stormwater to irrigate sportsfields and improve water quality.
- Redirect stormwater run-off away from bushland to improve bushland health and condition.
- Solar lighting where required, or lighting that can be adapted for solar energy as it becomes available.
- Introduce recycling bins and improve collection service.
- Interpretative elements installed.



Example from Marine Biological Station Park at Watson's Bay. Interpretative signage imprinted in concrete sets along path in bushland to avoid cluttering the landscape with signs.



Locations for new plantings of Duffy's Forest vegetation while retaining solar access to neighbouring properties and maintaining visibility into the site from the streets.



# ACCESS AND CIRCULATION

## What you told us

### How you access the Reserve

- The majority of local residents said that they walk to the Reserve including the high school students. People walk with dogs and with prams and they also bicycle. Most sports-club members come by car. Most short-cuts linked Chisholm Street to Kissing Point Road or from Auluba Road to Kissing Point Road/Vernon Street.

### What you would like

- **Walking tracks through bushland:** “Better defined walking tracks through bush.” “Boardwalk.” “Connect Chisholm Street with shops.” “Wider and level paths.” “Access through the bush is very difficult with a baby buggy - need wider, level paths made from compacted earth, rather than asphalt, which is in keeping with bush landscape. If its accessible for a 3 wheel buggy then it’s accessible for almost everyone.”
- **Path with lighting from Kissing point Road to Auluba 1 and 2.**

### Your vision

- **Walking tracks through bushland:** “Walking tracks identified and remove logs beside path.” “Two walking tracks through bush”. “ Define access from Chisholm St to Auluba 1 and 2 .” “Walking tracks designed to protect bushland; particularly from youth activities”.



Existing undefined and eroded tracks



Proposed stabilised paths

## Council’s response

- Maintain existing access points where residents enter and exit the Reserve. Formalise main entries with landscaped areas for a more welcoming feel to the Reserve (refer to pages 8 & 9). Provide park information signs at main entrances (refer to plans pages 7 &10).
- Upgrade two of the existing paths through bushland and provide suitable surface for walking, such as crushed sandstone, to compliment the bushland character and improve drainage and erosion. Minimum width of path 1.2m. Paths located on the fire breaks.
- Define paths through bushland and deter shortcutting.
- Connect developed areas of Reserve for all-weather access as a shared pedestrian/cycle way. Grade towards Auluba 3 to direct stormwater away from bushland. Minimum width of path 2.5m. See page 15.
- Provide bicycle racks.



# PARKING AND TRAFFIC

## What you told us

### What you would not like/least like

- **No parking within the Reserve.**
- **No parking along Kissing Point Road:** “Current problem due to new paths that prevent cars parking adjacent to baseball field.” “Cars park on cycleway on both sides of Kissing Point Road. Why not relocate the path inside the park fence and reinstate parking with bays and use logs/stumps and create permanent, screened parking at 2 Vernon St?” “Dislike parking along Kissing Point Road; suggest permanent parking at 2 Vernon Street with vegetation to screen carpark.”
- **Traffic issues generated by sport:** “Lack of parking control” “Driving behaviour.” “Parking congestion by sporting activities.” “Auluba Road is dangerous with cars on both sides and impatient parents turning in driveways.” “Driving behaviour of parents at Saturday sports which can be careless.”
- **Lack of vehicular parking.**

### What you would like

- **Parking facilities near sportsfields:** “Angle parking at clubhouse area of Auluba Road and along Kissing Point road.” “Angle parking from the main diamond to Vernon Street with the footpath relocated inside the Reserve for walking, jogging.” “Paved parking along Kissing Point Road”. “Paved parking along Vernon Street.” “What is intended with the parking opposite Kissing Point Village Green?”

### Your vision

- **Improved parking:** “Parking needs improvement as the upgraded pathway has greatly restricted parking.” “Parking barrier along Kissing Point Road (particularly on Saturdays) to prevent cars from angle parking over the footpath – a dangerous situation as pedestrians are forced onto the road”. “Improved parking for Auluba 3 – better parking facilities.”



## Council's response

### Options for increasing parking

Investigate the suitability of the road verge west of the amenities building in Auluba Road for 45-degree angle parking.

Option 1. Provide sealed angle parking along Kissing Point Road beside sportsfield area to increase parking capacity.

Option 2 Vernon Street: formalise parking beside the Village Green – surface and line mark.

Option 3. Seal carpark on vacant site at 2 Vernon Street. Informal planting at edges to screen from housing.

Options subject to Car Parking Development Control Plan No. 43.

New parking areas to incorporate water sensitive urban design to reduce the impact on bushland and waterways.



# COMMUNITY: PASSIVE RECREATION

## Masterplanning principles

### Sustainable principles

- Provide access and amenity to all residents
- Design for low maintenance
- Offer opportunities for a range of recreational activities, both formal and informal, active and passive
- Incorporate elements that are important to the community and user groups
- Balance the concerns of all community groups
- Implement strategies that promote community health and well being

### What you told us

#### What you value most

- **Social opportunities:** “We place great value on the large open space, clubhouse and its home fields, the children's playground and the bush areas. We value the whole area enormously and are very aware that the KPSC, clubhouse and surrounding grounds form an integral part of the physical development of young and old and the social and community life in South Turramurra and the surrounding suburbs.”
- **Social opportunities at Kissing Point Village Green:** “Good place to take visitors.” “Good place to take children.”

#### What you would like to be available

- **Increased social opportunities:** “The facilities are fully used now, however, there is scope for increased social facilities. Upgrade clubhouse as community building; a multipurpose venue or registered/licensed club with outdoor BBQ/picnic area. There is scope to use the open space for one-off or irregular events (concerts, carols, weddings, school events and so on) ... promote the idea of the Reserve as a community space.” “BBQ shelter with chess table for elderly residents.”
- **More seating:** “Quiet areas for contemplation.” “Seating along pathways.” “Need seating with good back support.”

#### Your vision

- **More seating:** “More tables and chairs.” “Quiet areas for sitting.” “Double length table with bench seats and roof for larger group picnics.” “Spectator seating/shade and some passive areas.”

### Council's response

*Formalise main entries to Reserve with attractive landscaped spaces suitable social gatherings.*

#### Auluba Road:

- New entrance next to memorial area/clubhouse with sealed surface and seating to promote social opportunities and enhance the suitability of the Reserve for community events (see pages 9-10).
- Additional seating to compliment new youth area next to cricket nets (see pages 10, 12 & 13).

#### Kissing Point Road

- New seating at entrance adjacent to the field (see page 7)

#### Additional seating

- Seats beside pathways; limited in bushland and placed to avoid disturbing the vegetation and to allow for shady and sunny places.
- Seating at edge of fields for spectators and community use.
- Double-sized picnic setting at Kissing Point Village Green.

# COMMUNITY: PASSIVE RECREATION



New seating areas



Existing entrance area next to clubhouse.



Proposed combined entrance and seating area next to clubhouse.

## FORMALISE ENTRIES WITH LANDSCAPED AREAS

# COMMUNITY : ACTIVE RECREATION

## *What you told us*

### *What you would like to be available*

- Children's play and playground
- Jogging walking track with exercise stations

### *What you value most*

- **Playground:** "It's great." "Enclosed, good." "Safe area."
- **Dog area:** "Complete fencing to dog off-leash area." "Maintain dog area and complete fence." "Contain dogs so they don't go into the bush."

### *What you would not like*

- **Vehicles or traffic through bushland:** "Trail bikes". "Motorised vehicles." "Mountain bike tracks."
- **Skateboard activities:** "Encourages anti-social behaviour, graffiti, litter, consumption of alcohol, attracts undesirable elements."
- **Noisy activities:** "No parties." "No model aircraft." "Dog area (left as is) not fenced."
- **Expansion of dog off-leash areas.** "The Reserve should not be opened for access as a dog reserve in the same manner as other ovals in the municipality – the focus to be on human activity..."

### *Your vision*

- **Maintain dog area and complete fence:** "Contain dogs so they don't go into the bush."
- **Walking/jogging track**
- **Exercise stations:** "Along jogging track" "Stretch station similar to Scarborough Field near Loftberg."

## *Council's response*

- Provide for future expansion of the playground in the longer term.
- Complete fence to dog off-leash area (completed)
- Provide exercise equipment located at new sealed path (from Auluba Road to Vernon Street).
- Path suitable for bicycle use included (refer page 5)



*Suitable exercise equipment*



# COMMUNITY: ACTIVE RECREATION

## NEW YOUTH ACTIVITIES

### What you told us

#### What you would like to be available

- **Activities for older children:** “Formal activities that are challenging, but not skateboard.” “Space for informal football; away from organised sports area.” “Kicking wall/tennis wall; carefully positioned within sporting area, not in bushland.”
- **Facilities school children like:** “All ball games, basketball, volleyball, hoop areas, frisbees.”
- **Pitching wall located at Auluba 1 and 2**

#### What you would not like

- (Refer page 10) Trail bikes, motorised vehicles, mountain bike tracks.

#### Your vision

- **Social opportunities for youth:** “Meeting places where youth can meet and talk near activity zone.”

### Council’s response

- Provide youth activities, located next to cricket nets. Basketball area and practice wall, suitable for tennis, softball and soccer. That the playing field at Auluba 1 and 2 not be reduced when the youth activities area is constructed.
- Seating area next to clubhouse compliments this facility (see pages 10 & 13).
- The location for the youth facility allows activities to expand onto the fields. It is near the local shops and clubhouse facilities.
- The facilities can be used by the club for training and therefore reducing wear and tear on the fields.
- A new batting cage is included next to the existing cricket nets to compliment this facility (see page 10)
- Refer to image of proposed youth area (see pages 13 & 14).



Location of new youth activities area

# COMMUNITY: ACTIVE RECREATION

## NEW YOUTH ACTIVITIES



*Existing area adjacent to cricket nets*



*Proposed area adjacent to cricket nets*



# COMMUNITY: SPORTS CLUBS

## What you told us

### What you would like

- Practice and game facilities – prefer Auluba 3 shared with softball.
- Improved field condition and repositioning of fields 1 and 2 with senior field to front of site.
- Lighting to allow training for sports using small balls such as cricket and softball.
- Fencing to Auluba 1 and 2 to prevent ball loss.
- Extension of safety fencing at Auluba 3.
- Shelters for teams to sit under at diamonds and updated benches.
- Practice nets – upgraded and enlarged to suit cricket, baseball and softball practice.
- Storage for equipment and bins.
- Clubhouse improved as community building, multipurpose venue.
- Spectator seating and shade for Auluba 1, 2 and 3.

### What you value

- **Open space:** “Flexibility of open space.”
- **Sportsfields and facilities:** “For youth.” “Available all year round.”
- **Clubhouse:** “Related social opportunities.” “Ideal clubhouse.”

### What the community would not like

- **No more sporting activities:** “Currently used to its optimum, Canoon Road complex nearby.” “No more soccer.” “All weekend.”
- **No night evening sports activities:** “Other than properly organised training sessions.” “Soccer practice is noisy.” “No activities after 9 pm.” “No night baseball etc., no floodlights please.”
- **Noise:** “Noise generated by soccer spectators.” “Noise from night time practice.”
- **Clubhouse:** “substandard.” “Ugly.” “Poor landscaping around clubhouse.”

### What the sports club would not like

- **Poorly maintained playing surface**
- **Poor condition and inadequacy of cricket nets**
- **Dilapidated infrastructure**

## Your vision for the future of the Reserve

### Short term

- Best use of sportsfields - rotate junior fields mid-season
- Upgrade and refurbish Auluba 1, 2 and 3 with watering system to fields 1 and 2.
- Lighting suitable for small ball activities
- Practice nets and kicking wall
- Storage for clubhouse
- Fencing: Safety nets at Auluba 3
- Toilet facilities upgraded and improved maintenance
- Improved parking

### Medium term

- New turf wicket
- Upgrade clubhouse
- Relocate cricket training facilities
- Field 3 used for multi-purpose sport

### Long term

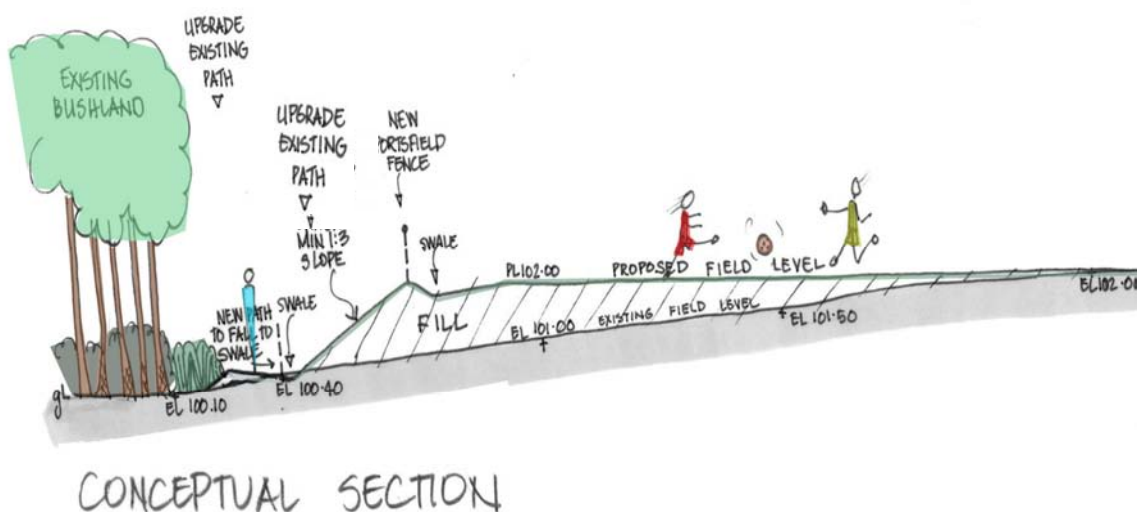
- Facility use as registered/licensed club
- Realignment of fields for soccer and cricket
- Turf wicket strips for fields 1 and 2.



# COMMUNITY: SPORTS CLUBS

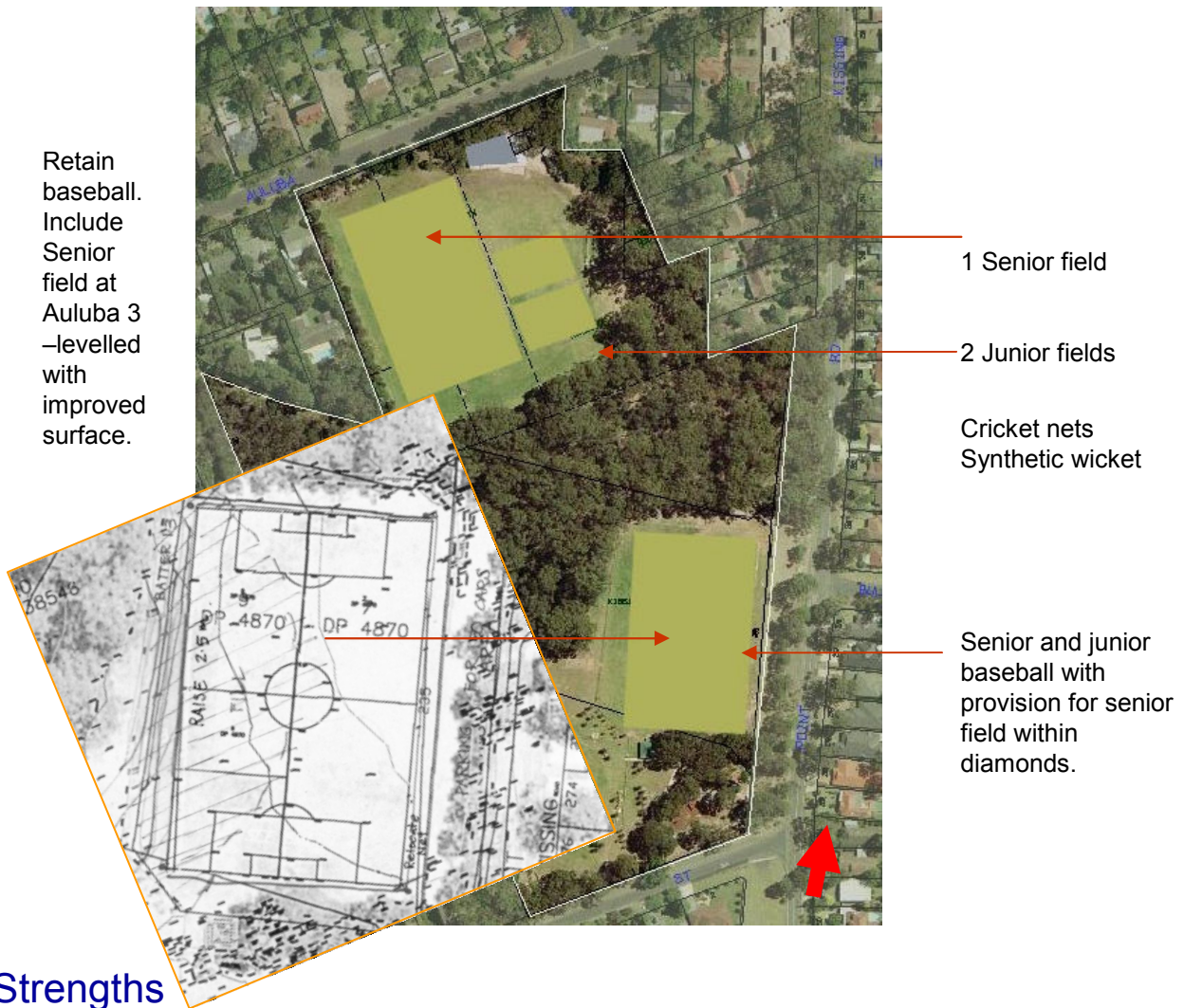
## Council's response

- Improve maintenance of public toilets and provide unisex accessible toilet at clubhouse.
- Upgrade Auluba fields 1 and 2 with water harvesting, irrigation and lighting.
- Maintain location of Senior field at Auluba 1. Changing the orientation will result in the cricket pitch being located in the football field. North/south orientation is more effective as it reduces the impacts of the westerly sun (see page 16).
- Rotate Junior fields as suitable.
- Upgrade Auluba field 3: Undertake upgrade works at Auluba 3 playing field with the design aimed at maximising opportunities for multiple sporting uses such as baseball, softball and football by maintaining the existing field dimensions. Works may include changes in level requiring retaining walls, batters and possibly relocation of baseball diamonds and fences. Planning for this project will involve consultation with the sports user groups.
- Investigate options for like-sports to be grouped together, such as softball and baseball.
- Investigate opportunities for lighting at Auluba 3 to AS 2460-2.6-1994 Guide to Sports Lighting – Specific Recommendations for Baseball and Softball
- Provide additional seating.
- Provide rebound wall suitable for soccer, softball and tennis (see page 10 & 13), or a synthetic surface area suitable for training.
- Upgrade fencing to fields to meet safety, aesthetic and Council standards.
- Provide batting cage adjacent to existing cricket nets (see page 10).
- Consider increased storage for bins and sports equipment where possible (see page 10).
- Design cricket pitches to accommodate winter use surfaces – located between football fields and with synthetic covers.
- Support opportunities to upgrade clubhouse in order to provide a flexible-use community building.
- Consider access to power for softball pitching machine.



*Auluba 3 - upgrade field to maximise opportunities for multiple sporting uses such as baseball, softball and football. Investigate changes in levels, retaining walls, batters and relocation of fences and diamonds in order to maintain the existing field dimensions.*

# SPORTSFIELD CONFIGURATION



## Strengths

- Set in cleared area – no existing vegetation to clear
- No existing services in field area to damage
- Existing toilets, storage and club kiosk adjacent
- Existing playground and picnic area adjacent
- Field orientated North/South
- Existing site infrastructure – water and power available for connections
- Can be sited without effect to existing senior baseball backnet and dug-outs
- Re-levelled site and path can be graded to control stormwater run-off and associated damage to bushland
- If lights installed, no adjacent housing on site
- Greater connection of sports grounds with walking track

## Weaknesses

- Small run-out and limited spectator space around field
- Baseball diamonds to be summer use only
- Baseball mound to be moved each season
- No club storage sheds or change rooms



# SIR DAVID MARTIN RESERVE

## CONCEPT PLAN





## APPENDIX A – WORKSHEETS

<b>What are the main activities undertaken at the Reserve?</b>		
ISSUE	No of responses	COMMENTS
<b>NATURAL ENVIRONMENT</b>		
Nature study	2	
<b>ACTIVE RECREATION</b>		
General exercising	3	
<b>Walking</b>	<b>12</b>	<b>"Mums time out." "Walk through the Reserve to watch various activities." "Walk as short cut to the shops."</b>
Bush walking	4	"Walking through bush to visit friends - horses."
<b>Dogs - off-leash and exercising</b>	<b>19</b>	
Bicycling through park	4	
Jogging/walking	5	
Open space activities	1	
Kite flying	3	"Running around baseball oval to fly kites."
Model aeroplane flying	1	
Golf practice	1	
Scooter riding	1	
<b>School sport</b>		<b>Turrumurra High: Weekly sport, Seasonally for gala days and (generally) annually for cross country. Turrumurra Public: Alternate weeks in summer for sport and weekly in winter for soccer.</b>
<b>PASSIVE RECREATION</b>		
Relaxing/passive activities	3	
Picnics	1	
<b>Socialising at Kissing Point Village Green</b>	<b>22</b>	
<b>Children's play/playground and cycle track</b>	<b>22</b>	
Public toilets	1	
<b>ORGANISED SPORT</b>		
<b>Soccer, cricket, softball, baseball</b>	<b>25</b>	
Sport/circuit training	3	
Sport spectators	1	
Clubhouse activities	4	
<b>Organised sport with Kissing Point Sports Clubs</b>	<b>KPSC</b>	<b>Training of teams during weeknights, playing competition games on weekend &amp; occasionally special sport development plus social/community functions.</b>
<b>Softball</b>	<b>KPSBC</b>	<b>Softball use Auluba 1 and 2 for practice two nights a week from April to September (5-9pm) and some weekends for development days.</b>

<b>Are there any activities that you would LIKE to be available at the Reserve?</b>		
<b>ISSUE</b>	<b>NO OF RESPONSES</b>	<b>COMMENTS</b>
Remain unchanged	3	"Like it just the way it is - not too busy and unspoilt." "Just the activities currently there."
<b>NATURAL ENVIRONMENT</b>		
Bush regeneration	1	
Interpretative signs through bushland	2	"Describing habitat - birds etc. and the history of the area such as an orchard where shops are."
Water recycling project	1	"Rainwater tanks for watering fields would certainly be worthwhile."
<b>ACTIVE RECREATION</b>		
		<b>"Better defined walking tracks through bush." "Boardwalk." "Connect Chisholm St with shops." "Wider and level paths." "Access through the bush is very difficult with a baby buggy - need wider, level paths made from compacted earth (rather than asphalt) which is in keeping with bush landscape. If it's accessible for a 3 wheel buggy then it's accessible for almost everyone."</b>
<b>Walking tracks through bushland</b>	<b>7</b>	
Guided bush walks/explorations	1	
Walking/jogging track	4	"Path for seniors." "Path around perimeter." "Path linking the Village Green and Ovals 1 and 2."
General exercise	2	
Exercise equipment	3	"Similar to that at Lofberg Oval." "Exercise stations around the baseball oval - very small and similar to E. Gordon Primary School."
Bicycle track and related facilities	3	
<b>Dog exercise</b>	<b>5</b>	
Dog off-leash area fenced	3	"Quite often dogs run into the bush and scare unsuspecting walkers."
Area/activities for older generation	3	"Boules/bocchi next to Auluba clubhouse." "Areas for informal and organised sport."
Outdoor entertainment	1	"Bicentennial Park is too far away."
Specific outdoor activities	2	"Kite flying." "Model aeroplane flying."
		<b>"Formal activities that are challenging, but not skateboard." "Space for informal football away from organised sports area." Kicking wall, tennis wall - carefully positioned within sporting area, not in bushland." (2)</b>
Skate area for children	2	
<b>PASSIVE RECREATION AT KISSING POINT VILLAGE GREEN (the Village Green)</b>		
<b>Additional seating</b>	<b>5</b>	<b>"Quiet area for contemplation." (2) "Need seating with good back support." "Seating along pathways."</b>
Picnic area	1	
BBQ	4	
Bubblers - drinking water supply	1	
<b>Children's play and playground</b>	<b>7</b>	
Kid's bike track enlarged	1	
<b>ORGANISED SPORT</b>		
<b>Organised sport</b>	<b>5</b>	
Night soccer	1	
Net at Auluba Road end of field to stop balls going onto the Road	1	
Baseball field levelled	2	

Netted area for baseball and softball hitting practice	1	
Batting cage(s) for baseball	1	"Using club's pitching machines."
Softball diamonds	1	Kissing Point Softball
Softball area pitching wall	1	Kissing Point Softball. Could also be used for tennis (squash) and soccer
Seating for baseball area	1	Shelters for teams to sit under at each diamond and updated benches
New oval at Chisholm Street where housing proposed and maintain Oval 3 as a natural field.	2	
<b>Clubhouse - improved facilities</b>	<b>10</b>	<b>"Improved facilities." "Additional floor" (2) " Additional storage." (3) "As meeting venue." (2) "To include youth activities." (2)</b>
Seating around oval for spectators	2	
Improved toilet maintenance	1	"Lockable toilets for use by the teams on Saturdays and at training sessions is a must. The current toilet block is disgusting and always filthy. A cleaner should also be engaged to clean the facility early on Saturday mornings before games commence. This is similar to what occurs at the Loftberg Road netball courts during winter for netball players."
Improved lighting	1	"Current lighting poor."
<b>ADDITIONAL FACILITIES</b>		
Small café/stall	2	
Pool	1	
Footpath upgrade		"From no 2 Auluba Road to the oval - people can be seen walking along the road between the oval, kindergarten and shops this would help access the doctor at no 4 and kindergarten at 10a as they can be accessed by footpath from the oval, around the baseball diamond."
Paved parking along Kissing Point Road	1	
Paved parking along Vernon Street	1	"What is intended with the parking opposite The Village Green?"
<b>KISSING POINT SPORTS CLUB' (KPSC)</b>		
<b>Practice and game facilities</b>	<b>KPSC</b>	<b>"Upgrade Auluba 1, 2 and 3. Prefer Auluba 3 shared with softball as similar codes and main seasons are complimentary, rather than sharing with soccer (same season) and different needs."</b>
<b>Safety nets at Auluba 3</b>	<b>KPSC</b>	<b>"Extend nets for fly balls."</b>
<b>Lighting for small balls</b>	<b>KPSC</b>	
<b>Repositioning of soccer field and cricket pitch</b>	<b>KPSC</b>	<b>Auluba 1 and 2 for maximum use - at least one championship soccer field.</b>
<b>Storage</b>	<b>KPSC</b>	<b>For equipment and garbage bins (currently housed in club change rooms due to vandalism.</b>
<b>Practice nets</b>	<b>KPSC</b>	<b>for cricket, softball and baseball</b>
<b>Practice wall</b>	<b>KPSC</b>	<b>for kicking and pitching balls with good lighting</b>
<b>Gas connection to clubhouse</b>	<b>KPSC</b>	<b>for heating and BBQ</b>
<b>All weather courts for practice</b>	<b>KPSC</b>	
<b>Jogging, walking track with exercise stations</b>	<b>KPSC</b>	<b>From Auluba 1 &amp; 2 to Auluba 3</b>
<b>BBQ shelter with chess table for elderly residents</b>	<b>KPSC</b>	
<b>Spectator seating and shade for Auluba 1,2 and 3</b>	<b>KPSC</b>	
<b>Parking</b>	<b>KPSC</b>	<b>Angle parking at clubhouse area of Auluba Road and along Kissing Point Road.</b>
<b>KISSING POINT BASEBALL CLUB (KPBC)</b>		
<b>Levelling of the field</b>	<b>KPBC</b>	<b>"This is without doubt our major concern ..."</b>
<b>Lighting of the field</b>	<b>KPBC</b>	
<b>Parking</b>	<b>KPBC</b>	<b>Angle parking from the main diamond to Vernon Street with the footpath relocated inside the Reserve for walking, jogging.</b>
<b>Shaded areas</b>	<b>KPBC</b>	<b>The club has applied for a government grant to build a shaded area next to the junior diamond, but a shaded area next to the main diamond is also needed.</b>



<b>Are there any activities that you would NOT LIKE to see happening at the Reserve?</b>		
<b>ISSUE</b>	<b>RESPONSES</b>	<b>COMMENTS</b>
Over development	2	"Commercialisation." "Not too much development, keep bush feel." "Not another Bicentennial Park look - no concrete paths or lights - keep bush feel."
Formal/manicured appearance	1	
<b>NATURAL ENVIRONMENT</b>		
<b>Destruction of bushland</b>	<b>4</b>	<b>"More cleared areas for passive recreation." "Youth 'hang-out' in bushland - damaging bush."</b>
Visual pollution - signs	1	
Concrete paths through bush	1	"Prefer timber edged, mulched paths."
Cycle paths combined with walking paths	1	"Exception young children's playground."
More hard surfaces	1	
Expansion of dog area	1	
<b>ACTIVE RECREATION</b>		
<b>Trail bikes, motorised vehicles, mountain bike tracks</b>	<b>5</b>	
Bike riding in dog off-leash area	1	
Horse riding	2	
Skateboard activities	8	"Encourages anti social behaviour, graffiti, litter, consumption of alcohol, attracts undesirable elements."
Golf practice	4	
<b>ORGANISED SPORT</b>		
More sporting activities	5	"Currently used to its optimum, Canoon Road complex nearby." "No more soccer." "All weekend."
Night/evening sports activities	6	"Other than properly organised training sessions." " Soccer practice is noisy." "No activities after 9 pm." "No night baseball etc - no floodlights please."
Any sport that increases traffic	1	
<b>FACILITIES/MISC ACTIVITIES</b>		
No more buildings/clubhouses	2	
Parking	3	"No car parking within the Reserve." (2) "No car parking along Kissing Point Road - current problem due to new paths that prevent cars parking adjacent to baseball field. Cars park on cycleway on both sides of Kissing Point Road. Why not relocate the path inside the park fence and reinstate parking with bays and use logs/stumps and create permanent, screened parking at 2 Vernon St?"
Elements that attract graffiti or vandalism	2	
<b>Noisy activities</b>	<b>6</b>	<b>"No parties." "No model aircraft." (2)</b>
Pot smoking	1	
Activities that lead to increased alcohol consumption	4	"No booze-ups." "No pub." "It seems baseball requires lots of drinking late into the evenings and occasionally throwing up."
<b>Skateboard ramp</b>	<b>KPSC KPCC</b>	
<b>Further dog off-leash areas</b>	<b>KPSC KPCC</b>	
<b>Anything that reduces the availability of the grounds</b>	<b>KPSBC</b>	

<b>What do you value MOST about the Reserve?</b>		
<b>ISSUE</b>	<b>NO OF RESPONSES</b>	<b>COMMENTS</b>
<b>NATURAL ENVIRONMENT</b>		
<b>Bushland</b>	<b>20</b>	"Rustic, wild." "Bush ambiance." "Sense of being in the bush." "Trees, trees, trees." "Flora and fauna." "Trees." "Nature and space in suburbs." " Access to bushland."
Quiet atmosphere	3	Serenity
<b>Local character</b>	<b>7</b>	"Casual, informal character, clear of motor vehicle pollution." "No boundaries/gates around Reserve." "Pleasant place." "Close proximity to home."
Proximity to residents	1	
Bushland, but there could be less as we live in bushy area	1	
Bush regeneration	1	"Very impressed with bush regeneration going on."
<b>Open space</b>	<b>17</b>	"Walking across the ovals and seeing how big the Aussie sky is." "Break in urbanism." "Open space for playing with children."
<b>ACTIVE RECREATION</b>		
Walking/jogging areas	3	
Variety of activities	2	
Fun-type activities that happen in the Reserve	1	
Seeing people enjoying picnicking	1	
<b>PASSIVE RECREATION AND KISSING POINT VILLAGE GREEN</b>		
Village Green - excellent	2	"Safe, shady area to meet friends."
<b>Social opportunities</b>	<b>5</b>	"Good place to take visitors." "Good place to take children."
BBQs	3	
Dog area	4	
Toilet facilities	3	No need for more. Cleaner.
Close proximity to residences, schools and shops	1	
Bike track	1	
<b>Playground</b>	<b>7</b>	"Enclosed." "Good." "It's great."
Opportunities for children's play	2	Safe area.
Fences	1	
<b>ORGANISED SPORT</b>		
<b>Sporting fields and facilities</b>	<b>7</b>	"For youth." "Available all year round."
Cricket	1	
Well maintained	1	
Clubhouse	4	"Related social opportunities." (2) "Ideal clubhouse."
Lighting for night time sports activities	1	
<b>Open space, clubhouse, playground, bushland</b>	<b>KPSC</b>	"We place great value on the large open space, the clubhouse and its home fields, the children's playground and the bush area. We value the whole area enormously and are very aware that the Kissing Point Sports Club, the clubhouse and the surrounding grounds form an integral part of physical development of young and old and the social and community life in South Turramurra and the surrounding suburbs."
<b>Large open space areas - flexibility of use, location, community feel and sense of ownership</b>	<b>KPCC</b>	"...the focus of the Reserve as a place of community interaction (given the location of the shops nearby) is extremely important."
<b>Large space and clubhouse</b>	<b>KPSBC</b>	

<b>What do you least like about the Reserve?</b>		
<b>ISSUE</b>	<b>NO OF RESPONSES</b>	<b>COMMENTS</b>
<b>NATURAL ENVIRONMENT</b>		
		"Insufficient management." (3). "Degradation." (3). "Weeds." (3). "Not fenced for protection." "Burning the bush for fuel reduction, should be manual rather than by fire." (3) "Dead, burnt trees in area where fire has been." "Dangerous dead trees."
<b>Negative impacts on bushland</b>	<b>10</b>	
Too many tracks through bushland	2	
Tracks not clearly defined and people walking in bushland	1	
No track between Chisholm St and Ovals 1/2 and 3.	1	
Lack of cohesion - add-hoc nature of park design	1	
Negative impacts of fencing	2	"Awful fencing." " Fencing around baseball oval."
<b>PASSIVE RECREATION AND KISSING POINT VILLAGE GREEN AREA</b>		
Seating	2	
Not enough bins in park and dog area	1	
<b>Toilets</b>	<b>3</b>	"Not enough." "Poorly maintained." "Always dirty." "Locking the toilet building is a problem due to constant use by families who use the park - please discuss with contractors."
BBQs	1	
<b>Litter/rubbish</b>	<b>3</b>	"Not enough bins." "Not enough bins in park or dog-off-leash area." "Bins overflow on weekends." "Alcohol bottles."
Lack of shade	1	
<b>ACTIVE RECREATION</b>		
Not enough open space for informal activities when sport is on.	1	"Need more - maybe 2 more and can be uncovered." "Too slow to heat."
<b>Dog off-leash area not fully fenced</b>	<b>3</b>	
Poor surface in dog off-leash area	1	
Children driving golf balls onto neighbouring houses	1	
Soccer players entering neighbouring properties to retrieve balls	1	"And not asking permission."
Baseball field not level	1	
Hard ground and poor grass cover	2	
Fallen trees around Auluba oval (left)	1	
<b>Poor drainage</b>	<b>5</b>	"Muddy surrounds of the baseball ground, boggy areas." "Poor drainage areas near cricket nets." (KPSftball)
Lack of water retention on site	1	
Inadequate fencing	1	
Name of baseball oval. 'Field of Dreams' too American	1	
Buildings such as club houses	1	"But they are necessary."
<b>Clubhouse</b>	<b>3</b>	"Substandard." "Ugly." (x 2) "Poor landscaping around clubhouse."
Not enough storage for sports club	2	
Litter around sports clubhouse and baseball diamond	1	
Night lights	2	"Unnecessary use of lights (high energy consumption) time switches needed."
Lights - lacking	2	
Poor maintenance of sportsgrounds by council	3	"Sportsgrounds in winter, cricket nets."
Uneven playing surface sportsfields	1	
Inadequate toilet facilities	1	
Traffic generated by sport	2	



Parking congestion by sporting activities	2	"Auluba Road dangerous with cars on both sides and impatient parents turning in driveways."
Lack of vehicular parking	2	
Lack of traffic control	1	
Disused parking area cn. Vernon St	2	"Dislike parking along Kissing Point road, suggest permanent parking at 2 Vernon St, with vegetation to screen car park."
Driving behaviour of parents at Saturday sports which can be careless	1	
<b>Noise</b>	<b>4</b>	<b>"Noise generated by soccer spectators." (2) "Noise from night time practice."</b>
Vandalism/graffiti	3	"Night."
SPORTS GROUPS		
<b>Facilities</b>	<b>KPSC</b>	<b>"We least like the dilapidated ageing facilities."</b>
Playing surface	KPCC	Particularly the two smaller soccer fields which do not cope with intensive use. Better management could lessen their recovery time.
Cricket nets in current condition	KPSBC	Upgraded with lighting

<b>Your vision</b>		
<b>SHORT TERM (NEXT 5 YEARS)</b>		
<b>SUSTAINABILITY AND THE NATURAL ENVIRONMENT</b>		
<b>Sustainability</b>	<b>Schools</b>	<b>The Public School has implemented sustainable principles and is interested in using the Reserve for environmental studies.</b>
<b>Support for water recycling project</b>	<b>8</b>	<b>"Water retention to prevent stormwater run off into neighbouring properties."</b>
<b>Water retention system</b>	<b>KPBC</b>	<b>"...need to be installed to ensure the grounds can be maintained in times of drought."</b>
<b>Remain relatively unchanged</b>	<b>5</b>	<b>"Kept clean and tidy, Not too much development." "Casual, community feel." "Don't light up bush areas at risk of disturbing native animals."</b>
<b>Bushland protected and enhanced</b>	<b>14</b>	<b>"Nature reserve with bushland protected and enhanced for passive recreation." "Flannel flowers and Christmas Bells exist to the east." "Bushland cleaned up." "Remove weeds and plant indigenous." "Remove dead timber in the freeway corridor." (2) "More native trees." (2) "Trees for shade."</b>
Improve drainage	1	
<b>ACTIVE RECREATION</b>		
<b>Walking tracks through bushland</b>	<b>10</b>	<b>"Walking tracks identified and remove logs beside path." (2). "Walking tracks." (2) "Walking tracks through bush." (3) "Define access from Chisholm St to Auluba 1 and 2 x 1." "Walking tracks designed to protect bushland (4) particularly from youth activities." (1)</b>
Lights for tracks	1	
Jogging track	1	
Bicycle track and related facilities	2	"Bike track around entire Reserve."
Exercise equipment	1	Similar to Loftberg, for adult use, at located at the Village Green area."
<b>Maintain dog area and complete of fence</b>	<b>7</b>	<b>"Contain dogs so they don't go into the bush."</b>
Boules area	1	
Playground upgraded	2	"Playground upgrade for 18 months old and up." "Bike path fenced and similar to Bicentennial Park, Pymble."
Bigger bike track around playground	1	Playground at Clontarf near Clonnies Restaurant.
Cycle tracks	1	"Cycle tracks are needed for older children as the current facility is only suitable for children under 5 years of age."
<b>Walking/jogging track with exercise stations</b>	<b>KPSC</b>	
<b>Activities/area for older children (outgrown existing playground)</b>	<b>4 plus school</b>	<b>"Skate park." (x 2). "Bike tracks." "Basketball half-court similar to the Glade with seating/tables." "Kicking wall."</b>
Friday night competition sport	1	
<b>PASSIVE RECREATION</b>		
<b>More seating</b>	<b>6</b>	<b>"More tables and chairs." Quiet areas for sitting." " Double length table with bench seats and roof for larger group picnics."</b>
Café	1	
<b>Social opportunities for youth</b>	<b>Schools</b>	<b>"Meeting places where youth can meet and talk (near facility such as basketball half courts)."</b>
<b>GROUNDS AND FACILITIES</b>		
<b>Improved sports field condition</b>	<b>Schools</b>	<b>Public school: Improved condition of fields for best use. High School: Good quality open space for sport. Additional cricket nets but not at the expense of sports field area.</b>
Level playing fields	2	"Level Auluba 3." "Join Auluba fields 1, 2 with 3 as joint playing area."
Better playing surface/ all-weather surface	2	"Major upgrade of playing surfaces."
Grass area	1	"Better grass."
Better ground surfaces	1	
Fence baseball area	1	
Lighting generally	3	"Improve lighting at Village Green." (2) "Provide limited lighting (at dog area)."
Lighting of sports fields	4	Additional lighting: " For Auluba 1 and 2 for small balls." "Night lighting for all sport." "Better small ball lighting for Field of Dreams so it can be used all year round." "Lighting for Auluba 1, 2 and 3."
Lighting concern	1	"Limit use to minimum required with time switches."

Toilets	1	"Improve maintenance - clean more frequently." "Soap dispensers."
No/less vandalism	1	
<b>Improve/upgrade club house</b>	<b>8</b>	<b>"Improve/upgrade clubhouse." (3). Ugly." "Add second storey." (2) "Storage at club house." (3)</b>
Social area, BBQ near clubhouse	1	
<b>Parking</b>	<b>4</b>	<b>"Parking moved from along Kissing Point Road to 2 Vernon Street." (2)</b>
Traffic controls	1	"Control speed limits with physical barriers."
No/less vandalism	1	
<b>SPORTS GROUPS</b>		
Upgrade and refurbish Auluba 1,2 and 3	KPSC	
Watering system	KPSC	
Practice nets and wall	KPSC	
Storage for clubhouse	KPSC	
Small ball lighting	KPSC	
Safety netting at Auluba 3	KPSC	
Spectator seating/shade and some passive recreation areas	KPSC	
Renovate and maintenance of all fields	KPCC	
Rotation of the two junior fields mid season	KPCC	
<b>Parking</b>	<b>KPSC</b>	<b>"Parking needs improvement as the upgraded pathway has greatly restricted parking."</b>
Toilets	KPBC	"Toilet facilities are poorly maintained and need an upgrade and a proper maintenance program as currently they are filthy when the majority of users are in the park i.e. weekends."
Auluba 3 upgrade	KPSBC	"...two diamonds that are usable during the daylight all day on Saturdays. On Friday and Saturday nights it could be used for competitive games. During week evenings it could be used Monday to Thursday for training under appropriate small ball floodlights."
<b>MEDIUM TERM (5-10 YEARS)</b>		
<b>SUSTAINABILITY AND THE NATURAL ENVIRONMENT</b>		
Remain relatively unchanged	3	
Water storage and recycling	4	
Nature reserve with bushland protected and enhanced for passive recreation	2	
<b>Maintenance of bushland</b>	<b>6</b>	
Education for bushland and native animals	1	
More trees/vegetation	1	
Hazard reduction	1	
<b>ACTIVE RECREATION</b>		
Exercise equipment	1	
Area for older children who have outgrown playground	4	"Skate park."(2) "Bike tracks." "Facilities e.g.. flying fox, climbing wall etc."
Extend bicycle tracks	1	
Link up bush corridor with future sports grounds across from Chisholm St	1	
Improved drainage	1	
Maintain and fence dog area	1	
Improve entrance gate at Auluba	1	"Better surfaced and planted."
Lighting	1	"Lighting for Village Green." "Lighting for Field of Dreams."
Level playing fields	2	Join Auluba fields 1 2 with 3 as joint playing area. Level Auluba 3.
Friday night competition sport	1	



<b>PASSIVE RECREATION</b>		
Additional seating for sports groups	1	
Café	1	
<b>GROUNDS AND FACILITIES</b>		
Upgrade clubhouse	3	Clubhouse to have second story. (Kissing Point softball)
Extra storage for clubhouse	1	
Aquatic centre	1	
Toilets updated	2	
Upgrade sports ovals	2	Better playing surface for all weather sports
Facilities for viewing sport	1	
Bubblers	1	
Improved parking for Aulbua 3	2	Better parking facilities
Parking barrier along Kissing Point Road (particularly on Saturdays) to prevent cars from angle parking over footpath	1	Dangerous situation as pedestrians forced onto the road
No/less vandalism	1	
New turf wicket	KPSC	
Upgrade clubhouse facilities	KPSC	
Upgrade facilities (clubhouse)	KPCC	
Relocate cricket training facilities	KPCC	
Oval 3 used for multi-purpose sport	KPCC	
<b>LONG TERM (10 YEARS PLUS)</b>		
<b>SUSTAINABILITY AND NATURAL ENVIRONMENT</b>		
Remain relatively unchanged	3	Kept clean and tidy, Not too much development. Casual, community feel.
Water storage and recycling	4	
<b>Protect and enhance bushland</b>	<b>7</b>	<b>Nature reserve with bushland protected and enhanced for passive recreation. Remove weeds.</b>
More trees/vegetation	4	More shade
Hazard reduction	1	
Healthy oval complex surrounded by healthy bush with strong biodiversity	1	
<b>ACTIVE RECREATION</b>		
Additional walking tracks	1	
Update playground	1	
Improved facilities for youth	1	
Exercise equipment	1	
Aquatic centre	1	
<b>PASSIVE RECREATION</b>		
More seating	1	
Better grass areas	1	
Community functions/gatherings	1	
Café	1	
<b>GROUNDS AND FACILITIES</b>		
Improved drainage	1	
Better playing surface for sport	1	All-weather surface
Possible public seating for ovals	1	
No/less vandalism	1	
Use of facilities as registered or licensed club	KPCC	
Realignment of fields for soccer and cricket	KPCC	
Installation of a turf wicket strip for ovals 1 and 2	KPCC	

# APPENDIX B – SITE ANALYSIS



## Topography

Sir David Martin Reserve is located 100m above sea level and sits on the flat ridge top area above the Lane Cove Valley.



## Water catchment

Sir David Martin Reserve is located in the Lane Cove River Catchment.



Location map

## Description of the existing environment

Sir David Martin Reserve covers an area of 105.734ha. The site consists of developed sport and recreation areas - Auluba Ovals 1, 2 and 3, Kissing Point Village Green, and undeveloped remnant bushland.

## Location

Sir David Martin Reserve is located at Kissing Point Road, through to 10B Auluba Road and Chisholm Street, South Turramurra.

## Geology and soil

**Geology:** Milltagong formation which contains embedded shale, fine to medium quartz sandstone with an absence of rock outcrop.  
**Soils:** Lucas Heights derived from sandstone and shale. A stony soil with low fertility and low available water capacity. Lateritic topsoils are hard setting and stony subsoils can be sodic and impermeable.  
 The ovals have been filled with imported subgrade material.

## Vegetation

Remnant 'Duffys Forest' Ecological Community (Tall Open Forest) is located at the centre of site with small areas at the park edge and along Kissing Point Road. This area is listed on Schedule 1 Part 3 of the *Threatened Species Conservation Act 1995* as an endangered ecological community.

## Native animals

*Ninox strenua* (Powerful owl) which is 'vulnerable'. (Recovery plan prepared Local Gov Act 1993 Sections 36A-36D)

Wildlife sightings recorded by local residents include owls, echidnas, blue tongue lizards, green tree frogs, goannas, crested hawk. Terrestrial macro invertebrate surveys are currently underway.

## Hydrology

Much of the surface run-off is currently directed towards the bushland areas at the centre of the site.

## Climate/microclimate

Auluba 1 and 2 sports fields are warm and sunny, with tall trees providing some shelter from hot and cold westerly winds and southerly busters along with some cooling north-easterly breezes in the evenings.



Source: Soil Landscapes of the Sydney Region 1:100,000 Sheet (Chapman & Murphy 1989)

## Soil landscapes

Local soil types

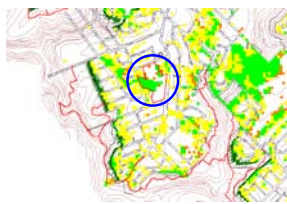
- Gymea (Gy)
- Glenorie (Gn)
- Lucas Heights (Lh)
- West Pennant Hills (Wph)



## Vegetation

Local ecological communities include:

- Duffys Forest Ecological Community
- Sydney Sandstone Ridgtop Woodland
- Sydney Turpentine Ironbark Forest
- Coastal Sandstone Heath
- Sydney Blue Gum High Forest



## Fire

Sir David Martin Reserve has been identified as fire prone land. A hazard reduction burn within the Reserve was last carried out in September 2003.

- Fire break
- Tree canopy
- Fire buffer zone

## Natural areas

Shows the proximity and potential links of Sir David Martin Reserve with natural areas

- Lane Cove National Park
- Bushland in parks and reserves



- KEY
- Overland water flow
  - Embankment cut
  - Embankment fill

## Ecology

## Sir David Martin Reserve

District Park Master Plan - Site Analysis

Ku-ring-gai Council



# APPENDIX B – SITE ANALYSIS

## Local History

The indigenous inhabitants of South Turrumurra are the Terramerragal tribe, which is a sub-group of the Ku-ring-gai tribe.

Source: Kissing Point Progress Assoc. 1998

Subdivisions began in the Kissing Point Road area of South Turrumurra in 1927 and did not result in major settlement but farms and market gardens. In 1958 the population reached 800 and the area was designated as rural, virgin bush or difficult terrain.

Development in the 1950s provided homes for young families. The most significant landscape items are the remnant eucalypts that define Kissing Point Road and Auluba Reserve.

Source: Ku-ring-gai Heritage and Neighbourhood character Study Godden Mackay Logan Keys Young, 2001



## Current land use

The area around the park is zoned 'Residential 2c' and the local shopping centre is zoned 'Commercial 3a and 3c'.

The park itself is zoned 'Recreation 6a' and classified as Community Land.



## Walking tracks

- Walking tracks link to the 'Step Track' and to the National Park 'Great North Walk'.
- Bushcare sites



## Sports reserves

- Sports reserves in the local area

<h3>Strengths</h3> <ul style="list-style-type: none"> <li>Three sports fields with good spatial qualities – scale, bushland views and sense of enclosure</li> <li>Remnant forest</li> <li>Good connections – shady paths within Reserve</li> <li>Potential to improve wildlife habitat to enhance forest</li> <li>Good shade and sunny areas</li> <li>Attractive picnic area with shelters and playground</li> <li>New landscaped dog off-leash area</li> </ul>	<h3>Weaknesses</h3> <ul style="list-style-type: none"> <li>Vandalism</li> <li>Access to Reserve not defined</li> <li>Building unattractive</li> <li>Poor landscaping around building</li> <li>Stormwater runoff not captured</li> <li>Bushland weeds and areas of erosion</li> <li>Most signage unattractive and no interpretative signs for park facilities</li> <li>Unattractive old fences</li> <li>Minimal parking</li> </ul>
---	---



Community



Aesthetics

## Sir David Martin Reserve

District Park Master Plan - Site Analysis

Ku-ring-gai Council



# APPENDIX B – SITE ANALYSIS

**Area** – 10.57 ha

## Landscape Character

The Reserve contains a remnant forest of 'Duffys Forest Ecological Community' and the associated ecological benefits associated with the forest.

## Formal sports activities

- Football (soccer)
- Cricket
- Softball/Baseball
- Public Schools Sports Association

## Informal Activities

- Children's playground
- Dog off-leash area
- Two cricket nets
- Recreational walking, jogging, cycling
- Socialising – picnics and youth 'hang-out'
- Informal sports
- Local group uses – for example uses by the neighbouring church

## Park Infrastructure

The Reserve contains 3 of Ku-ring-gai's 46 sportsfields

### Auluba Ovals 1 and 2

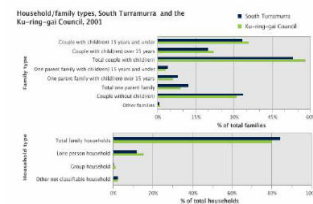
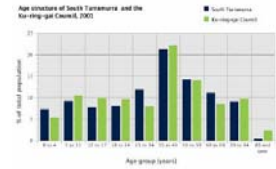
- Sportsfields – 1 Senior, 2 Junior
- Clubhouse/Amenities building
- Grounds shed
- Sports field lights
- Water tank for irrigation
- Cricket nets with 2 bays

### Auluba Oval 3

- Two softball/baseball areas with back-nets
- Bunkers at senior area

### Kissing Point Village Green

- Children's playground
- Children's bicycle track
- Amenities building – disabled toilet, family toilet, small storage and kiosk
- Picnic facilities - shelters and 2 electric BBQs
- Dog off-leash area fenced from the road



## Facts & figures

2001 Census of Population and Housing published by the Australian Bureau of Statistics.

## Opportunities

- Large and diverse site
- Relatively flat
- Close to schools and shops
- Valuable bushland to enhance and protect
- Multiple entry points – linking neighbourhoods
- Close proximity to Lane Cove National Park
- Potential to improve circulation
- Potential to increase activities and facilities
- Better use of sportsfields
- Interpretation and education
- Improve amenities
- Co-ordinate palettes of colours materials and furniture/fittings over the whole site
- Community meeting place

## Constraints

- Residential area – impact of activities at the Reserve on local residents
- Endangered Ecological Community
- Significant trees
- Fire break clearing behind houses
- Weeds
- Multiple users
- Conflicts between formal and informal uses
- Limited parking
- Vandalism
- High demand for sportsfields

## Opportunities & Constraints

## Social

- Provide access and amenity to all residents
- Offer opportunities for a range of recreational activities, both formal and informal, active and passive
- Preserve open space, recognising its value as an important community asset
- Minimise impacts on neighbours such as traffic, parking, noise, light and litter

## Environment

- Protect and enhance native plants and habitat
- Provide corridors to link bushland areas
- Incorporate water sensitive urban design principles
- Reuse, recycle and reduce waste
- Manage off-site impacts such as noxious weeds and encroachments

## Economic

- Implement programs to reduce energy and water consumption
- Improve Council operations and maintenance practices within the budget
- Work with community groups to improve facilities
- Make improvements to reduce public liability and insurance claims
- Work with hirers and lessees for mutual benefit

## Sustainable principles