

Tool tips for 3D



Indicates the Layers available for viewing including the name of the development.



Returns the screen to the initial view.



Zoom in – increases the scale of the display.



Zoom out – decreases the scale of the display.



Pan around the view.



Rotate the view in 3D.



Line of sight analysis. –

Click new analysis.

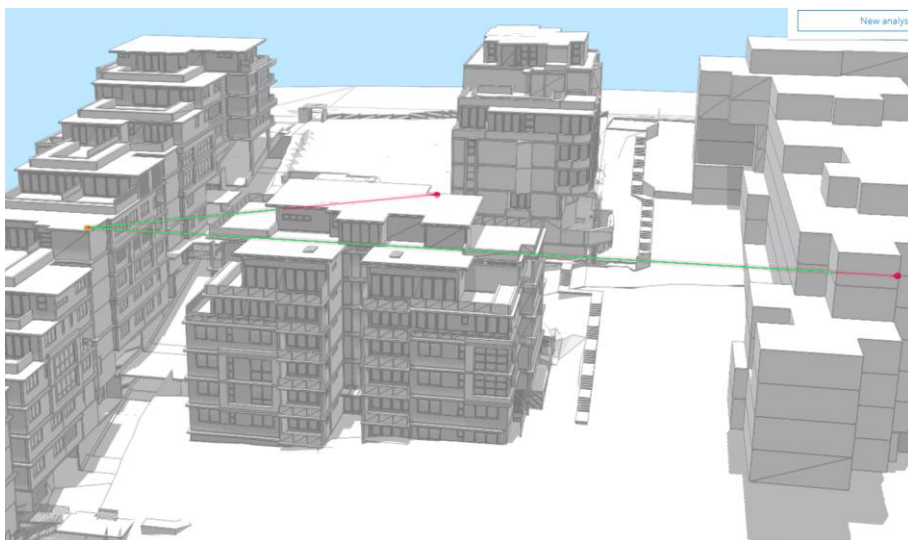
Click the top of the building of interest.

Move the pointer to the second building of interest.

An orange line will appear on the buildings indicating the level of the cursor on the building.

Click on the second building of interest.

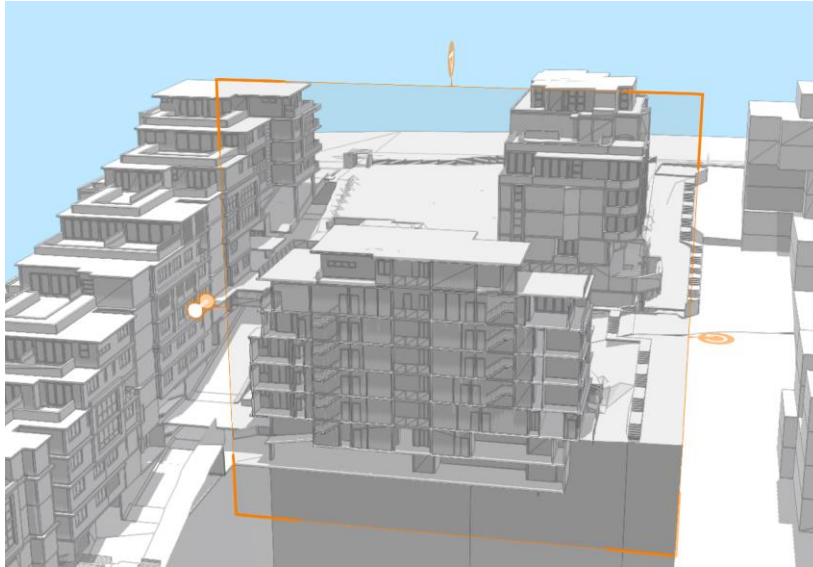
Everything visible from the first point to the second point will be shown in green along the line of sight.





Slice – display a vertical or horizontal cross section of a building development.

Use the pointer to place a square on the screen – vertically or horizontally. Move the square back and forward, or up and down as appropriate to display a cross section of the building.



Display a shadow analysis based on time of day.

Chose a date, then adjust the time of day to adjust the building shadows.

