

SAFETY AROUND SCHOOLS

FACT SHEET 2

Parking Safely Around Schools: Parking Rules

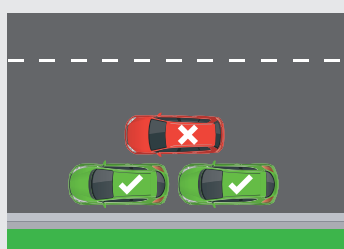
Children can be unpredictable, so expect the unexpected, particularly in school zones. Remember, rules and parking signs are in place with children's safety in mind. Please, always choose safety over convenience.



PARKING RULE

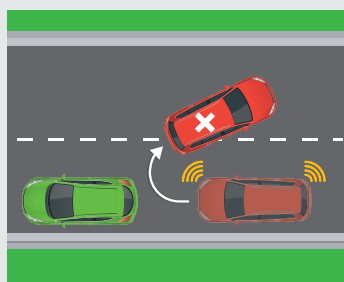
WHAT DOES IT MEAN?

PENALTIES & DEMERIT POINTS



- **DOUBLE PARKING** – You must not stop on the road adjacent to another vehicle at any time, even to drop-off or pick-up children/passengers.
- Double parking blocks visibility and forces other cars to go around you.

EXCEEDS:
\$387+
2 DEMERIT POINTS



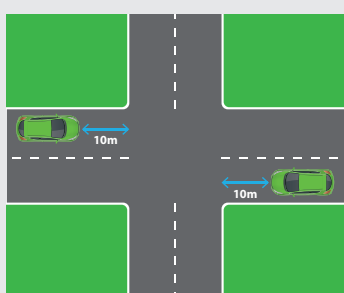
- **U-TURNS** and **3-POINT TURNS** can be dangerous and difficult to manoeuvre and should be avoided, especially in a school zone.

EXCEEDS:
\$387+
3 DEMERIT POINTS



- You must not stop on any **FOOTPATH** or **NATURE STRIP** or on or across a **DRIVEWAY**.
- This forces children/pedestrians onto the road to get around you.

EXCEEDS:
\$387+
2 DEMERIT POINTS



- It is illegal to stop in or within 10m of an **INTERSECTION** with no traffic lights.
- This blocks visibility for turning drivers and children/pedestrians crossing at the intersection.

EXCEEDS:
\$514+
2 DEMERIT POINTS