

Ku-ring-gai Sports Forum 2025



Agenda

6:00 PM	Welcome Mayor Christine Kay
6:05 PM	St Johns Ambulance Defibrillator Program
6:20 PM	Strategic Planning Update Craig Johnson
6:35 PM	Maintenance Update Peter Barrett
6:50 PM	Capital Works Update Peter Lichaa & Craig Roberts
7:05 PM	Draft Policies – Sportsfields Bookings Policy & Sportsfields Closure Policy – Q&A Matthew Drago & Will Adames
7:35 PM	Charles Bean surface replacement – outline of Community Consultation Matthew Drago & Will Adames
7:45 PM	Open Discussion – Questions from the Floor
8:00 PM	Close

Mayor's Welcome Councillor Christine Kay

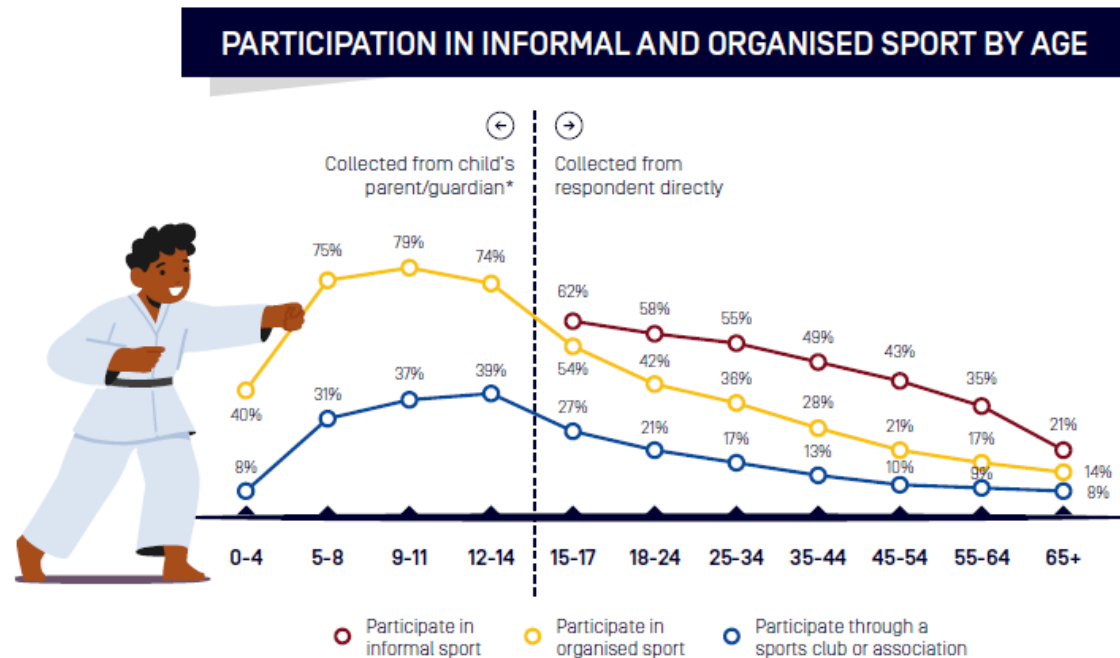


Strategic Planning Update



Ausplay Participation

- Post COVID impacts on community sport is still been felt across all sports
- There is a shift away from participation in sports with clubs and associations, to more informal sporting activity
- Emerging sports like Pickleball are seeing significant growth



Strategic Planning

Open Space and Recreation Strategy

- Following the adoption of the Recreation Needs Study in early 2024 Council staff are now working to developing the Open Space and Recreation Strategy.
- Strategic objectives of the strategy
 - Plan for future growth
 - Promote equity and access
 - Strengthen recreation diversity
 - Sustainable asset management
 - Partnerships and innovation
- Delivery of the Strategy we are aiming to have to Council towards the end of 2025

Strategic Planning

Open Space and Recreation Planning

A new program of Recreation Facilities Plans is being developed following the completion of the District Master planning program.

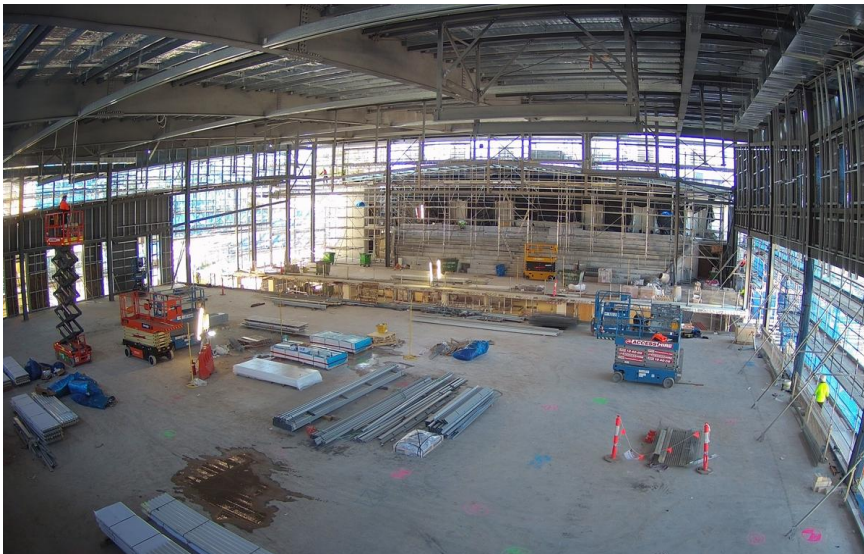
The program aims to cover sites based on:

- Prioritisation framework for all sites
- High demand from community users
- Community groups that have actively pursued Council in improving home grounds
- Development of a framework to provide future infrastructure improvement and capital investment

Strategic Planning

St Ives High School Sports Centre – Update

- Joint funded project to deliver an additional two court and multi-purpose space.
- Will provide a four-court sport for school and community use.
- Work is progressing well with an expected completion in late 2025.
- The centre will be jointly operated and managed by Council and NSW Department of Education.
- The site will be operated by a third party on behalf of Council.



Maintenance Update



Maintenance Program

Council currently maintains 47 ovals.

Winter and summer maintenance programs.

These sportsfields include natural turf and synthetic turf areas.

The team also maintains:

- 71 Tennis Courts
- 2 Golf Courses (both 18 holes)
- 2 Croquet Lawns
- 25 Netball Courts



Sportsfield Maintenance

Scheduled Maintenance & Reactive Maintenance.

Scheduled Maintenance:

- Marking out sportsfields for play
- Preparing turf wickets
- Installation of goal posts for play
- Removal of litter on fields
- Mowing of all surfaces in preparation for play
- Repair of damage on fields
- Undertake disease, pest & weed control on turf
- Garden maintenance on areas adjacent to sportsfields
- Safety concerns such as holes in surfaces.
Prevalent in dog off leash ovals
- Repair of vandalised surfaces and equipment

Reactive Maintenance:

- Safety concerns such as holes in surfaces.
Prevalent in dog off leash ovals
- Repair of vandalised surfaces and equipment



Council teams mark out each sportsfield every 2 weeks during the season



Turf Wicket Maintenance

- Council undertakes maintenance of 8 turf wickets during summer.
- Each wicket receives between 16 – 20 hours per week.
- Predominately maintenance occurs on Thursday & Friday, but Council's Sportsfield Supervisor monitors the weather each week to ensure maintenance occurs.
- Photo 1: wickets in winter season
- Photo 2: same wickets in summer season



Renovations

- Annual renovation program on every oval.
- Two methods of aeration – earthquaking and vertidrain
- In the last growing season Council's contractors 'Earthquaked' 21.8 hectares of sportsfields across 25 locations.
- Council staff completed 22.5 hectares using an 'Vertidrain' machine on the back of our tractor.
- After the fields are aerated, selective topdressing may occur.



Renovations

Topdressing Ovals

- 150 tonnes of United States Golf Association (USGA) Sand was used at Auluba Oval.
- 99 tonnes of USGA Sand was used at Killara Park.



Renovations

Turfing Project – Queen Elizabeth Reserve

Last year Council trialed a new species of Couch, Tahoma 31 which performed very well. The first photo shows how quickly the couch came out of dormancy. Couch does not normally come to life until early October. Photo was taken early September 2024.

The next photos are of the expansion of the trial. We laid another 2,000sqms.



Renovations

Turfing Project – Queen Elizabeth Reserve

New turf was laid early December 2024. Turf is being monitored through the winter season.



Renovations

Turfing Project – Queen Elizabeth Reserve

- These are photos of the turf during the winter 2025 season, taken 11 July 2025.
- The rhizomes are still intact, which should hold together until it comes out of its dormancy.
- You can see how the turf is holding together well $\frac{3}{4}$ of the way through the season. We would expect the turf to be bare at this stage of the season.



Renovations

Oversowing of Ovals

- The team oversow couch ovals to protect the turf when it becomes dormant.
- The contractors/team use 3,280kg of rye seed over the course of the renovation period across 8.2 Hectares of sportsfields.
- The team continues to put out more rye seed during the winter season when the field shows signs of wear or are damaged.



Renovations

Mowing of Ovals

- The team mow the fields at least every 2 weeks during the summer period.
- Some fields are completed weekly depending on the level of play the field is being used for. This year with the wet weather we trialled a smaller machine as the team could not get on the fields. This machine is called a ventrac.



Renovations

Weed Spraying

Weed Spraying is also undertaken during the renovation period. Last Year Council undertook 81 hectares of weed spraying.

- 21 Hectares using the chemical Casper
- 21 Hectares using the chemical Crest.
- Both these chemicals are used to suppress or kill any broadleaf weeds in sportsfields.
- As Council builds more Couch fields the weed spraying intensifies. Last season Council sprayed 10 Hectares of Couch ovals multiple applications using the chemicals Tribute/Barricade/Oxfert/Crowbar to keep them clean.
- A variety of weeds are targeted. These being shown in the photos below. Paspalum, Crowsfoot & Summer Grass.



Further Questions regarding Sportsfield Maintenance can be directed to:

Peter Barrett

Co-ordinator Open Space Services

Mobile: 0417 441 677

Scott Anderson

Sportsfield & Golf Courses Supervisor

Mobile: 0401 567 643

Sportsgrounds Capital Works Program



Capital Works - Summary

Project Name	Suburb	Activity	Budget
Norman Griffiths Synthetic Sportsfield	West Pymble	Soccer	TBD
Loyal Henry Tennis Courts Upgrade	Roseville	Tennis	\$100,000
Warrimoo Tennis Courts Upgrade	St Ives	Tennis	\$237,000
Hassall Park - Stage 2 Masterplan Implementation - Cricket Net Upgrade	St Ives	Cricket	\$500,000
Samuel King Oval - Perimeter Fencing	North Turramurra	Soccer	\$100,000
Primula Oval - Perimeter Fencing	Lindfield	Cricket, Soccer	\$100,000
Auluba Oval - Building Upgrade	South Turramurra	Cricket, Soccer, Baseball & Basketball	\$435,000
Auluba Oval - Roof Replacement and Stormwater Connection	South Turramurra	Cricket, Soccer, Baseball & Basketball	\$40,000 (Club Grant)
Bannockburn Oval - Sportsfield Upgrade	Pymble	Athletics, Cricket & Soccer	\$1.2-1.5 Million
Bannockburn Oval – Clubhouse Upgrade	Pymble	Athletics, Cricket & Soccer	\$400K from Office of Sport Grant & \$2.1Million from Council
Robert Pymble – Masterplan Works	Pymble	Tennis	Tennis Courts - \$300,000 Amenities - \$450,000 to \$600,000
The Glade – Masterplan Works	Wahroonga	Basketball, Cricket, Netball, Soccer & Tennis	\$900,000
Turramurra Memorial Park - Cricket Nets Upgrade	Turramurra	Cricket	\$330,000
Roseville Park – Tennis Court 4	Roseville	Tennis	\$55,000
Regimental Park – Tennis Courts 1- 2	Killara	Tennis Courts	\$70,000
Regimental Park – Tennis Courts 3- 5	Killara	Tennis Courts	\$150,000
Golden Jubilee Oval - Replace copper log fence and continuation of sandstone block wall	Wahroonga	Baseball, Kids Cycle, Soccer	\$100,000
Warrimoo Oval - Perimeter Fence replacement	St Ives	Cricket, Soccer, Tennis	\$100,000
Charles Bean Sportsfield Upgrade	Lindfield	Soccer	\$828,200

Completed/Current Projects



Loyal Henry Tennis Courts Upgrade

Scope

- Repair damage by tree roots
- Acrylic resurface two courts

Completed

- November 2024

Value

- \$100,000



Warrimoo Tennis Courts Upgrade

Scope

- Install surface and sub-surface drainage on Court 2
- Repair sink hole on Court 2
- Remove asbestos contaminated waste
- Asphalt patching
- Acrylic resurfacing Court 1 and 2

Completed

- March 2025

Value

- \$237,000



Samuel King Oval Perimeter - Fencing

Scope

- Replace existing fencing and provide screen fencing behind goal areas

Completed

- August 2024

Value

- \$100,000



Primula Oval Perimeter - Fencing

Scope

- Replacement of perimeter fencing

Completed

- August 2024

Value

- \$100,000



Auluba Oval - Building Upgrade

Scope

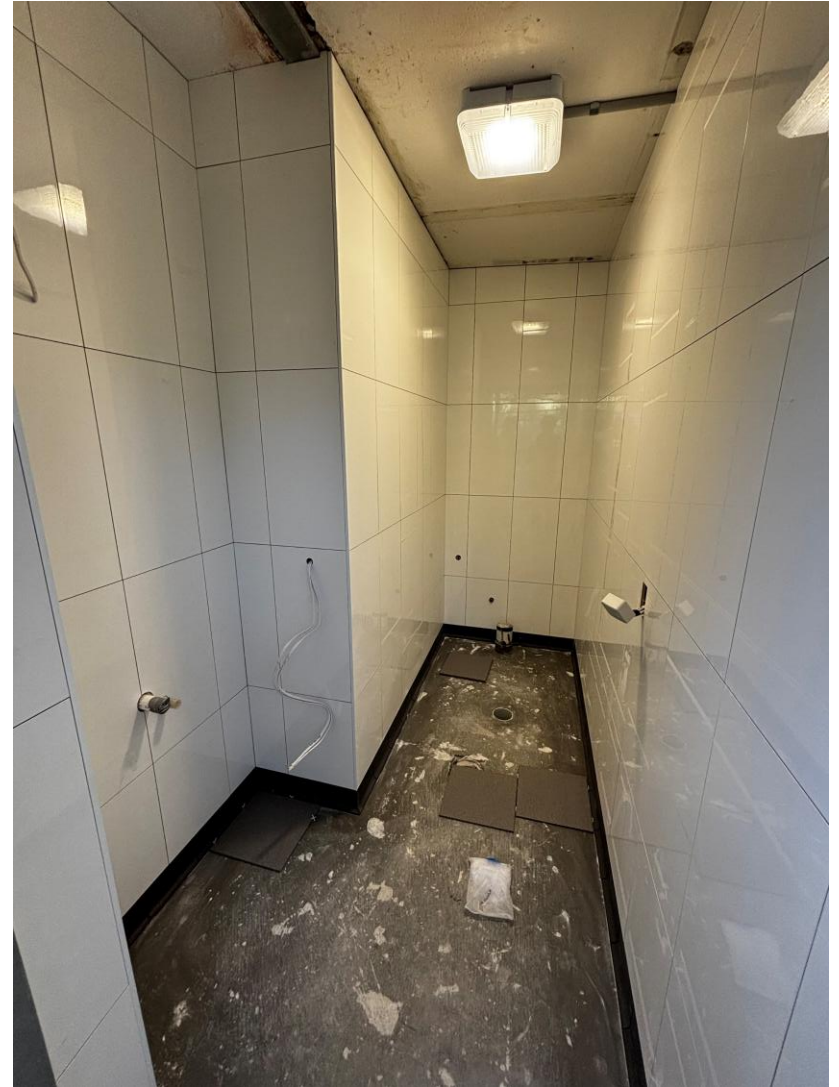
- Amenities reconfigured & rebuilt to provide accessible toilets
- Changerooms upgraded, increased in size & referees room added
- New internal toilets & extra storage areas for clubhouse
- Drainage, external to the building
- Landscaping with new planting, low walls and accessible paths

To be completed

- August 2025

Value

- \$435,000



Auluba Oval - Roof Replacement and Stormwater Connection

Scope

- Replace roofing over the veranda which included stormwater from roof plumbed into irrigation tank system

Completed

- April 2024

Value

- \$40,000 (Club Grant)



Norman Griffiths Oval Upgrade

Scope

- All-weather synthetic pitch
- Significant improvements to quality of stormwater
- DDA compliant access to facilities
- Upgrade of Lights
- Spectator seating
- Fencing

Completion

- TBD

Value

- TBD



Norman Griffiths Oval Upgrade

- Council resolution of 15 April 2025.
- Contract with TurfOne terminated in May 2025.
- Council's project team is progressing:
 - the development of a procurement strategy for the project
 - the high-level assessment of the design, cost and time required to build a natural turf field compared with a synthetic field - consultation with industry experts
- Council's project team continues to manage the site including the detention, treatment and release of stormwater.
- The quality of water being detained for testing prior to release to Quarry Creek is meeting the EPA parameters for discharge. This is a significant improvement on previous controls and minimises the need to remove water via vac-trucks during significant rain events.

Norman Griffiths Oval Upgrade

- Water quality testing and monitoring is continuing at Quarry Creek and the results published on Council's website.
- Council continues to work with the EPA on the environmental challenges of the site, meeting their expectations in managing the project.
- Council has released the details of draft flood studies relevant to the Norman Griffiths Oval site
- Independent investigation into the project to assess compliance, effectiveness and identify critical learnings.

Upcoming Projects



Bannockburn Oval Upgrade

Scope

- Clubhouse – proposed knockdown & rebuild as a new split-level building with surrounding access upgrades
- Sports Field upgrades – proposed drainage, irrigation, grading, turf and new cricket wicket + possible fencing & athletics track extension - subject to detailed design

Timeframe

Clubhouse

- 2025 – Design/Document/Approval
- 2026 – Tender/Construction

Sports Field Upgrade

- 2026 – Design/Document/Approval
- 2027 – Tender/Construction

Value

- Clubhouse: \$400K from Office of Sport Grant & \$2.1Million from Council
- Sports field: \$1.2-1.5 Million

New Clubhouse

Status:

Community Consultation is next

Inclusions:

‘Changing Places’ facility, accessible toilets and change rooms, as a minimum + new clubroom / canteen / storage facilities

Layout:

Split level building with clubhouse / canteen / amenities on upper level & storage / pumphouse facilities at field level

Bannockburn Oval Upgrades



2 SECTION SHORT SECTION - OPTIONAL
VBS Scale: 1" = 320'

Cricket Net Upgrade

Scope

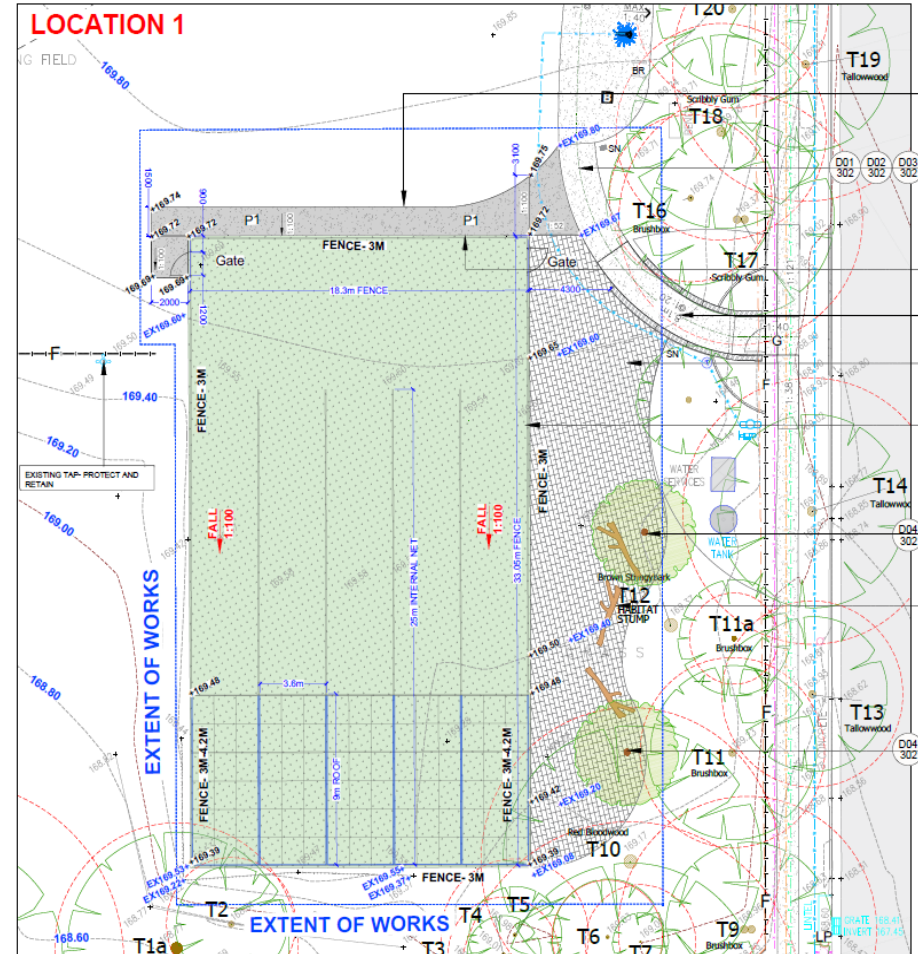
- New cricket practice nets to SW corner of park
- Priority works funded by Council and NSW Office of Sport grant.
- Council is seeking the support of club stakeholders in sourcing extra funds.

Timeframe

- Tender being assessed
- Construction Oct 2025 – Feb 2026

Value

- \$500,000



Robert Pymble – Masterplan Works

Scope

Tennis Courts

- Acrylic Court resurface
- Replace perimeter fence
- Provide line-marking and hoop for half-court basketball

Amenities

- Demolish existing amenities building
- Provide new accessible amenities building in an architectural style sympathetic to the park's heritage

Timeframe

- **Tennis Courts** - Works complete by March 2026
- **Amenities** - Works complete by September 2026

Value

- Tennis Courts - \$300,000
- Amenities - \$600,000

Robert Pymble – Masterplan Works

Part 3: The Masterplan

Robert Pymble Park: Masterplan (Sheet 1)



The Glade – Masterplan Works

Scope

Sportsfield:

- Sportsfield upgrade including drainage, irrigation, topsoil, turfing.
- New synthetic cricket pitch.
- Provision of conduits for potential future lighting.

Timeframe

- by March 2026

Value

- \$900,000

The Glade – Masterplan Works

The Glade Landscape Masterplan (North)



- (A) Install perimeter pedestrian path network connecting to park facilities and park entries
- (B) Retain existing field. Upgrade and improve drainage
- (C) Install gross pollutant trap at park boundary and new drainage pipes connecting to water storage tanks
- (D) Construct swale around perimeter of field to improve drainage
- (E) Incorporate rock stabilisation to base of embankment
- (F) 'No-mow' zone and bushland regeneration works
- (G) Install cricket practice nets in new location to better connect with playing field
- (H) Upgraded amenities facilities
- (I) Retain and protect Blue Gum High Forest Ecological Community
- (J) Retain / upgrade track through bushland
- (K) LED field lighting
- (L) Remove and relocate existing cricket nets and replace with bushland area
- (M) Retain basketball half court
- (N) Retain existing multi-use tennis / basketball / netball courts
- (O) Install accessible, unisex toilet in new location
- (P) Remove existing amenities building to allow expansion of existing play space
- (Q) Upgrade and expand play space to provide fenced area with wider range of play opportunities
- (R) Upgrade car park to provide accessible parking space. Install wheel stops and rationalise existing barrier fence
- (S) Upgrade existing pedestrian path / service vehicle access
- (T) Upgrade existing stairs to provide accessible path
- (U) WSUD / Rain garden
- (V) Rationalise / upgrade existing barrier fences
- (W) Screen planting
- (X) Formalised parking on Koora Ave

The Glade – Masterplan Works

The Glade Landscape Masterplan (South)



- (A) Install perimeter pedestrian path network connecting to park facilities and park entries
- (B) Retain existing field. Upgrade and improve drainage
- (C) Install gross pollutant trap at park boundary and new drainage pipes connecting to water storage tanks
- (D) Construct swale around perimeter of field to improve drainage
- (E) Incorporate rock stabilisation to base of embankment
- (F) 'No-mow' zone and bushland regeneration works
- (G) Install cricket practice nets in new location to better connect with playing field
- (H) Upgraded amenities facilities
- (I) Retain and protect Blue Gum High Forest Ecological Community
- (J) Retain / upgrade track through bushland
- (K) LED field lighting
- (L) Remove and relocate existing cricket nets and replace with bushland area
- (M) Retain basketball half court
- (N) Retain existing multi-use tennis / basketball / netball courts
- (O) Install accessible, unisex toilet in new location
- (P) Remove existing amenities building to allow expansion of existing play space
- (Q) Upgrade and expand play space to provide fenced area with wider range of play opportunities
- (R) Upgrade car park to provide accessible parking space. Install wheel stops and rationalise existing barrier fence
- (S) Upgrade existing pedestrian path / service vehicle access
- (T) Upgrade existing stairs to provide accessible path
- (U) WSUD / Rain garden
- (V) Rationalise / upgrade existing barrier fences
- (W) Screen planting
- (X) Formalised parking on Koora Ave

Sportscourts

Turramurra Memorial Park - Cricket Nets Upgrade

Scope

- Crown lift surrounding trees
- Demolish & dispose of existing nets & concrete
- Construct new 2 bay Cricket Nets
- New concrete vehicle access point for maintenance

Timeframe

- Project has been designed and ready for Tender
- Construction – Late 2025/Early 2026

Value

- \$330,000



Sportscourts

Roseville Park – Tennis Court 4

Scope

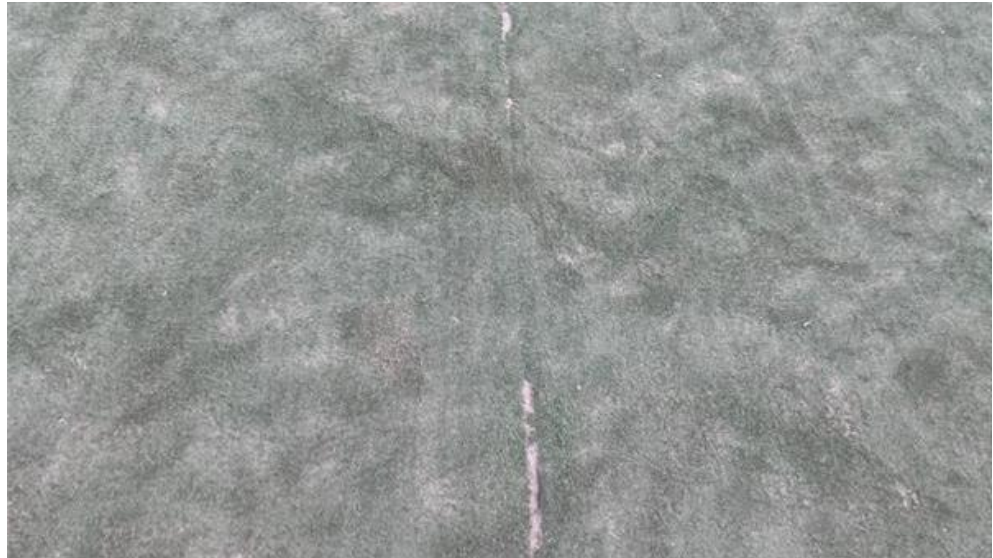
- Replace existing synthetic grass for the full court

Timeframe

- by June 2026

Value

- \$55,000



Sportscourts

Regimental Park – Tennis Courts 1- 2

Scope

- Acrylic Resurface Courts 1 - 2

Timeframe

- by June 2026

Value

- \$70,000



Regimental Park – Tennis Courts 3- 5

Scope

- Synthetic Resurface Courts 3 - 5

Timeframe

- by June 2026

Value

- \$150,000



Fencing & Carparks at Parks and Sportsgrounds

Golden Jubilee Oval

Scope

- Replace copper log fence and continuation of sandstone block wall

Timeframe

- by June 2026

Value

- \$100,000

Warrimoo Oval

Scope

- Perimeter Fence replacement

Timeframe

- by June 2026

Value

- \$100,000

Sportsfields Booking Policy and Sportsfields Closure Policy



Background

- The establishment of the Sportsfields Bookings Policy and the review of the Wet Weather Policy were discussed at last year's sports forum.
- Following feedback from the forum and a review of issues and concerns with the current booking procedures, a draft Sportsfields Bookings Policy was developed.
- Following feedback from the forum the former Wet Weather Policy was reworked into the draft Sportsfields Closure Policy.
- Both policies have been reported to Council and it was resolved to put both policies out for community consultation for 42 days.

Sportsfields Booking Policy

- Will assist sportsfield users and managers in the sustainable use of sportsfields
- Has established a bookings hierarchy
- Has a definition for a Community Sporting Group or Association
- Has established a proposal for dealing with disputes related to allocation clashes
- Provides a definition to differentiate between academy/elite/squad training providers, community sporting groups providing this type of training and personal trainers

Sportsfields Closure Policy

- Following feedback from the forum it was decided to maintain existing arrangements
- Policy has been updated to reflect this
- Policy now includes provisions for other adverse weather conditions such as drought

Where to from here

Policies will be placed on Council's website in the "Your Say" section from today



Will be open for review and comment for 28 days



At the end of the consultation period all comments received from community will be considered and DRAFT policies will be amended as required.



Report back to Council with final policies in September



Charles Bean Oval Surface Replacement

- Charles Bean Oval synthetic surface has reached the end of its useful life and is due for replacement. It is a heavily utilised facility by Sporting Groups, Lindfield Learning Village, casual hirers and the general public.
- A considered community consultation process is required to ensure project scope considers the expectations of all stakeholders.
- As part of the consultation process we will be seeking recommendations and opinions from industry experts to include in the consultation.
- Consultation will commence and include the recommendations of the industry experts for community consideration.

Open Discussion / Questions

