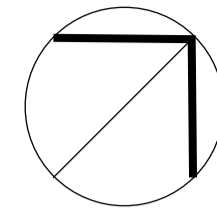




Sequoia Close Park Concept plan

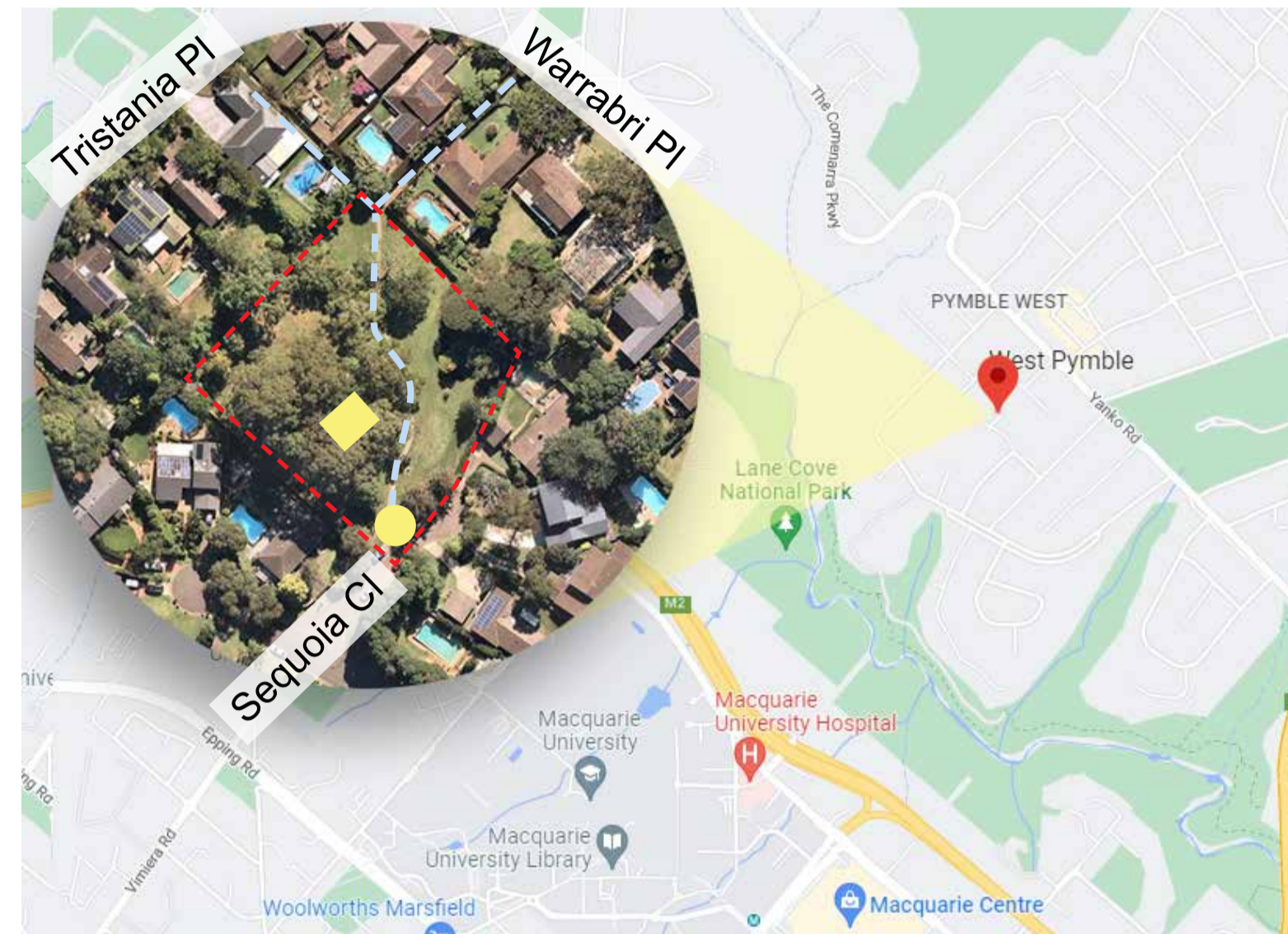


This large local park is centrally located within West Pymble. It is situated in a quiet cul-de-sac, with easy access from neighbouring streets and the nearby West Pymble Public School.

The park is well vegetated with a mix of native and exotic shade trees scattered across broad gently sloping grass areas, providing ample open space for informal ball games. Proposed improvements focus on the creation of a more accessible and inclusive children's playspace providing both equipment and nature based play opportunities.

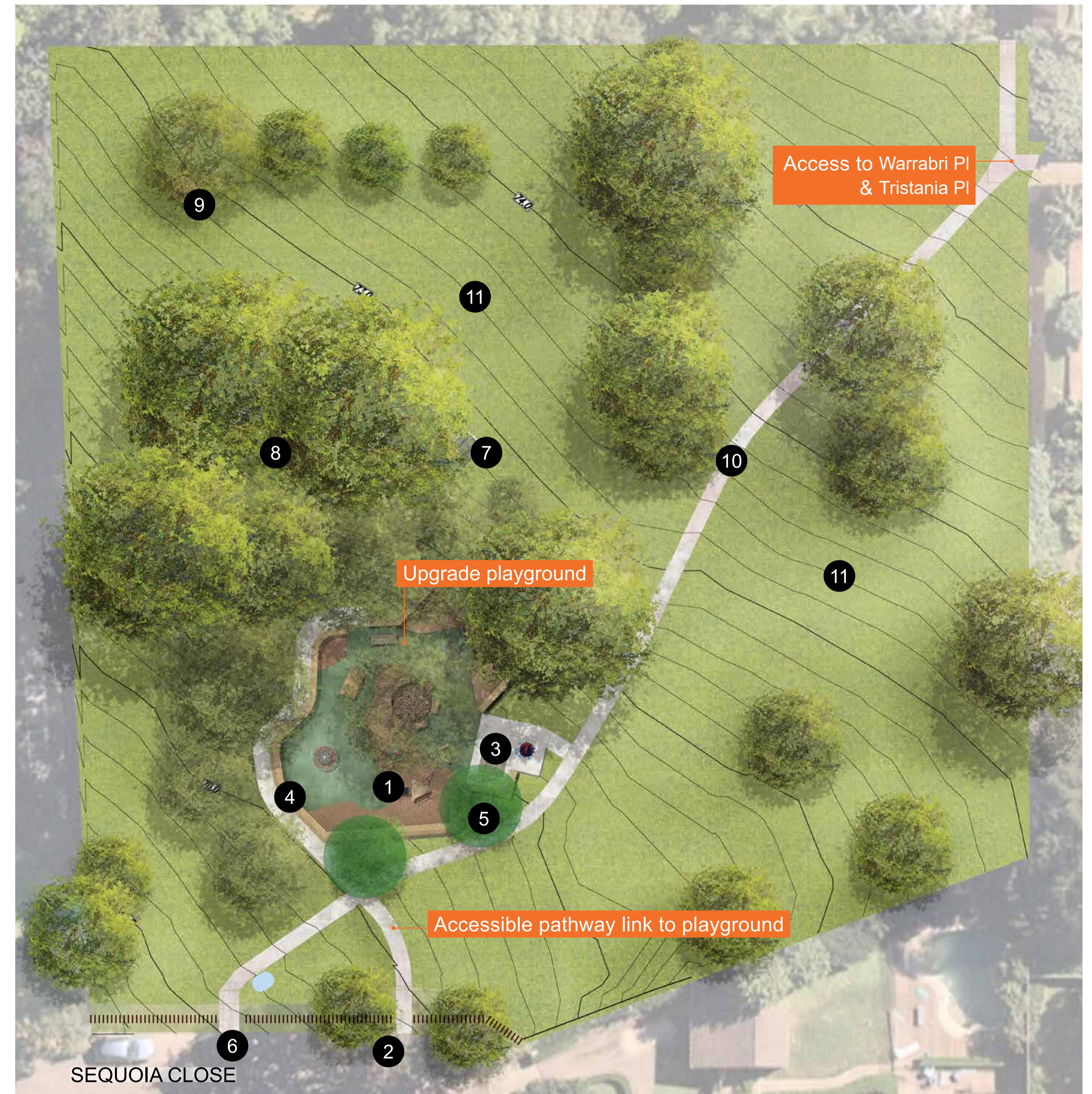
Context

0m 4m 8m 12m 16m 20m



- Access off Sequoia Close
- Pedestrian movement
- Existing playground
- - - Boundary

Proposed Site plan



- Proposed shade trees
- New rubbish bin
- Accessible Drinking fountain
- ▬ Park Fence

- 1 Upgraded play area
- 2 New accessible kerb ramp
- 3 New accessible seating area
- 4 New sandstone retaining walls
- 5 New native tree
- 6 Extend concrete path to kerb
- 7 Retain existing seating area
- 8 Retain and protect existing trees
- 9 Retain existing sitting rock
- 10 Retain pedestrian pathway
- 11 Retain open grass areas



Existing pedestrian pathway



Existing Playground Location

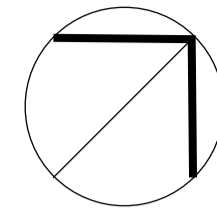


Existing Access



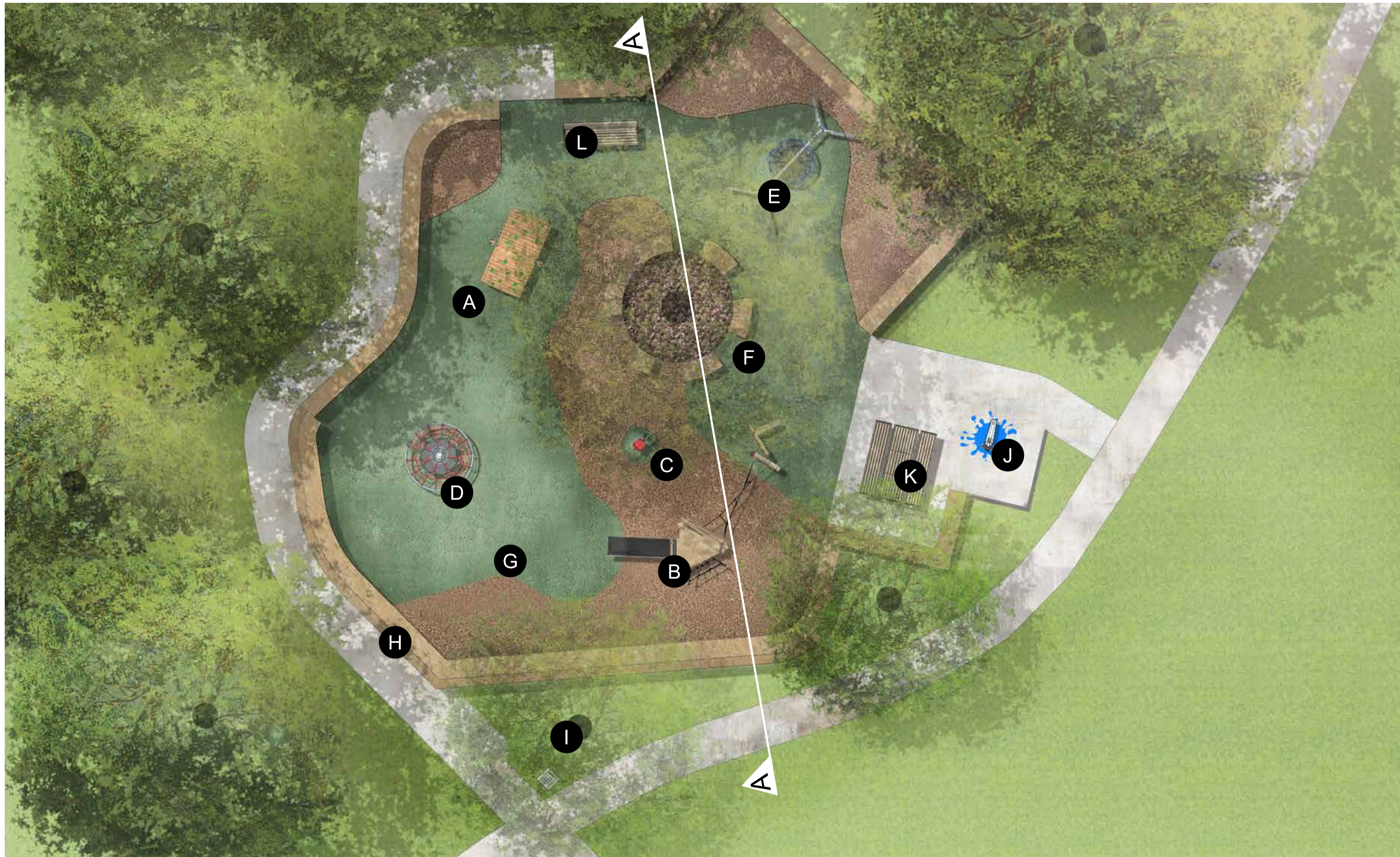


Sequoia Close Park Concept plan



Playground plan

0m 2m 4m 6m 8m 10m



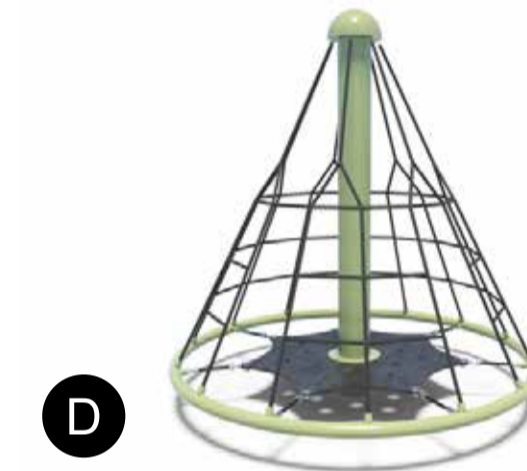
A Tropicana Bungalo for social and imaginative play.



B Tower with climbing and sliding capabilities and ground level play



C Horse Springer to encourage active and imaginative play.



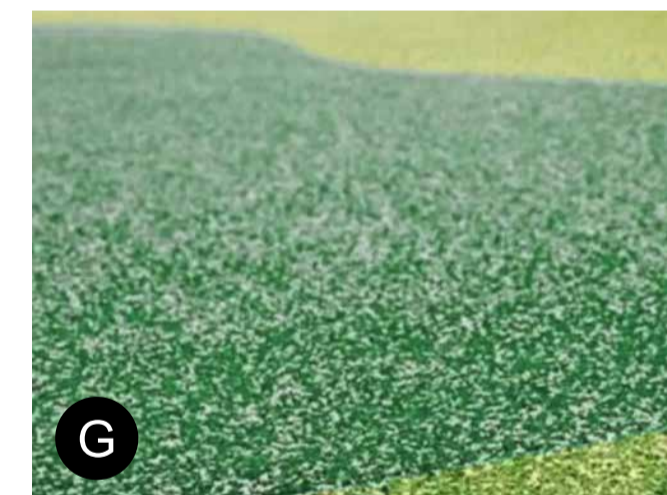
D Rotanet to promote active and social play



E Capital Nest Swing for social play



F Yarning circle around existing tree for social and informal seating



G Rubber softfall for improved accessibility

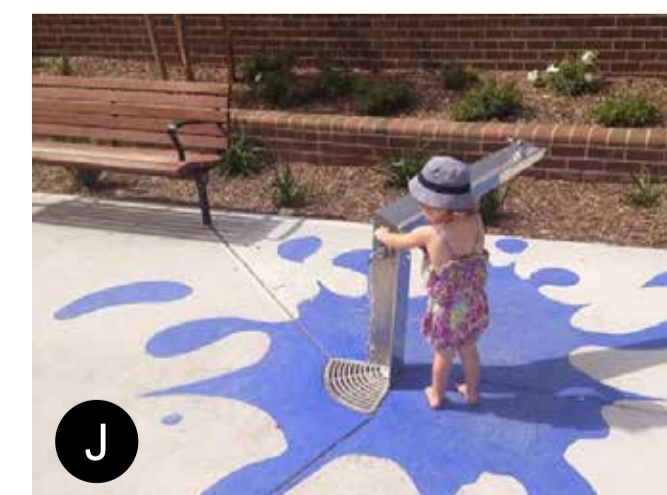


H Sandstone terrace retaining wall



I Native tree for visual softening, improved wildlife habitat and provide shade

Section 'AA'



J Accessible water fountain



K Accessible picnic setting



L DDA seating with armrests

